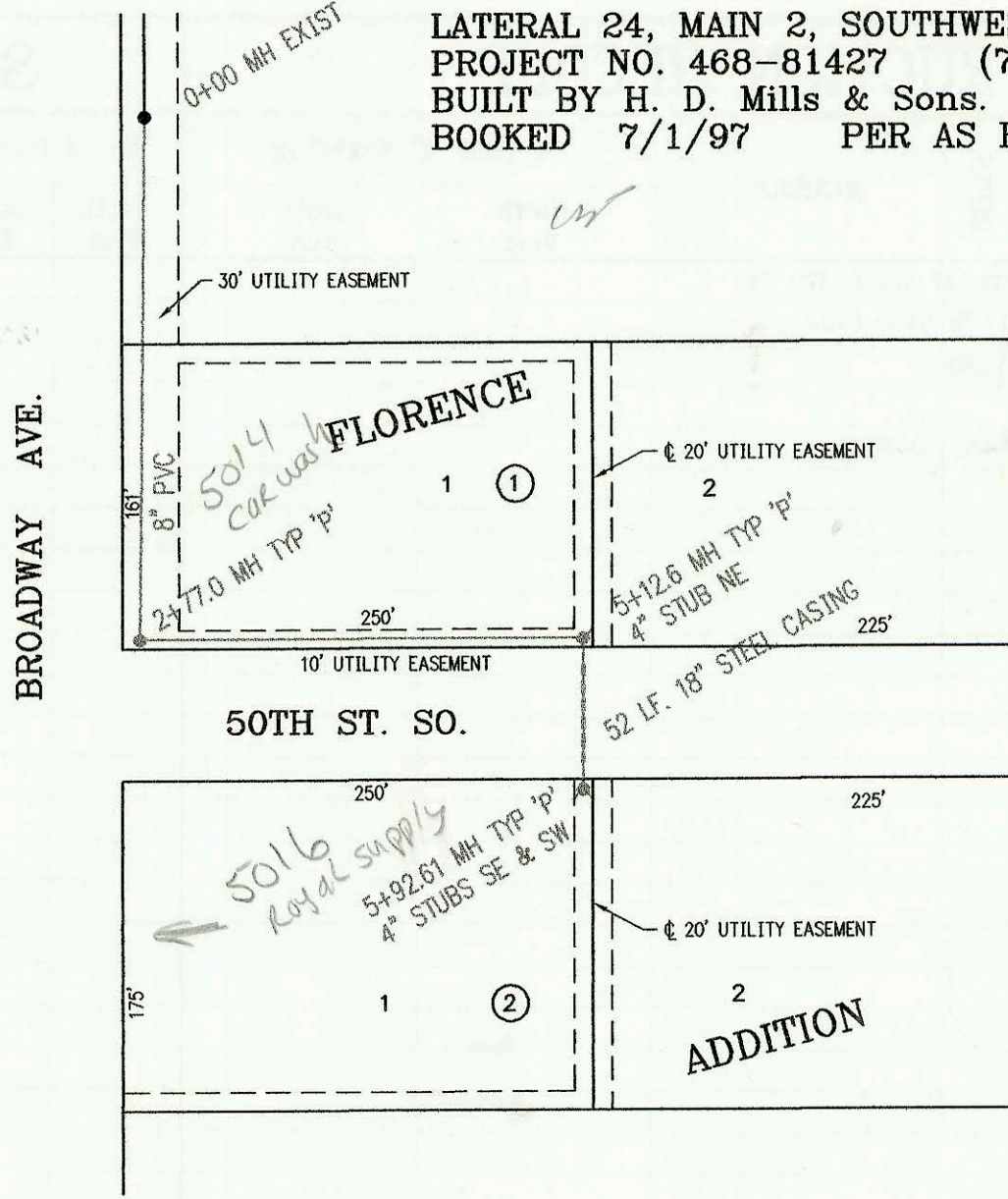
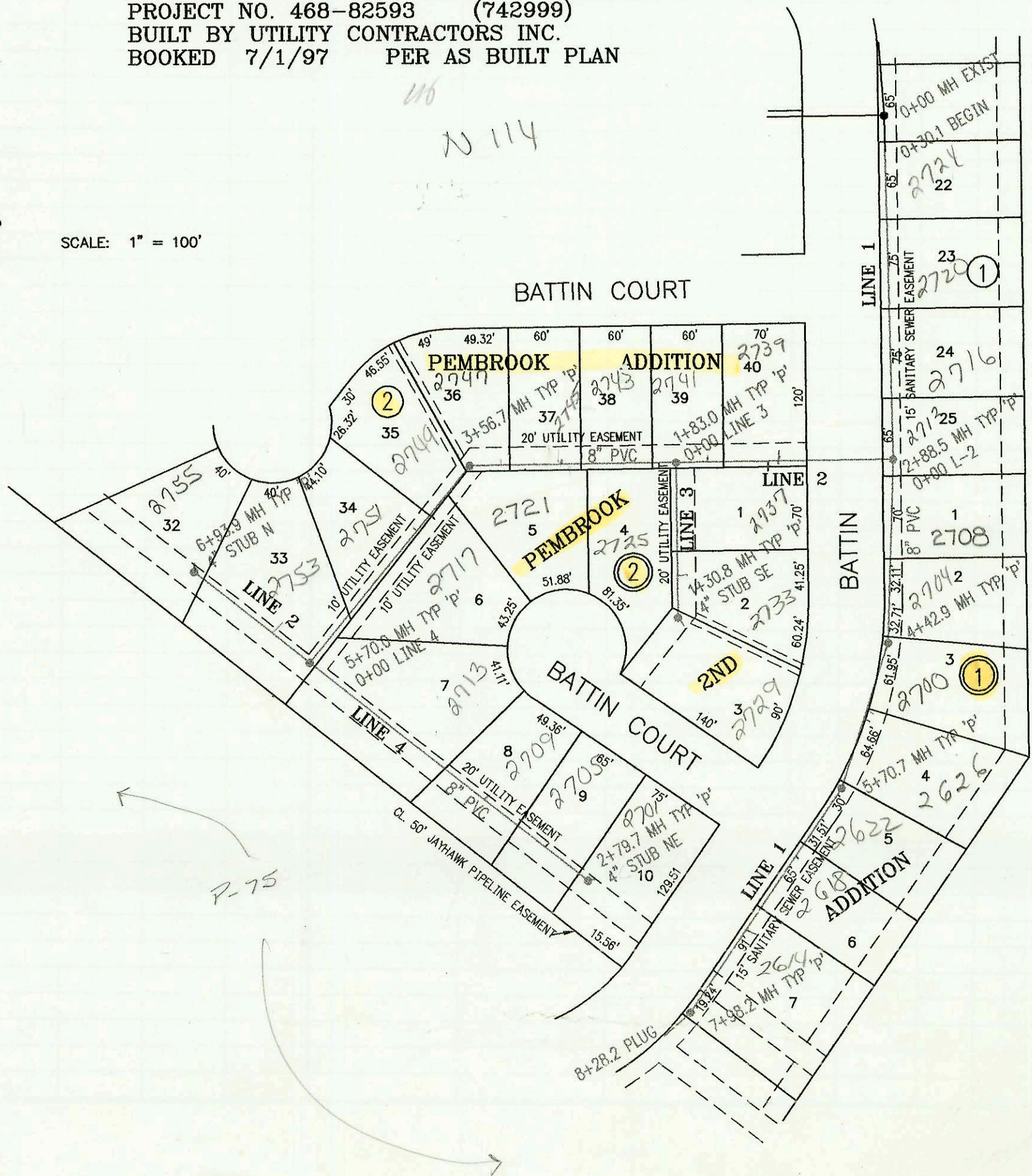


LATERAL 24, MAIN 2, SOUTHWEST INTERCEPTOR SEWER
 PROJECT NO. 468-81427 (742940)
 BUILT BY H. D. Mills & Sons.
 BOOKED 7/1/97 PER AS BUILT PLAN



SCALE: 1" = 100'

LATERAL 71, MAIN 5, SANITARY SEWER NO. 23
 PROJECT NO. 468-82593 (742999)
 BUILT BY UTILITY CONTRACTORS INC.
 BOOKED 7/1/97 PER AS BUILT PLAN



SCALE: 1" = 100'

15" Main in Rear
 Do Not connect to
 this Line. go to
 front
 b/c
 L-156

CONSTRUCTION RECORD						SERVICE RECORD							
STATION	ELEVATION		DEPTH	MANHOLE	4-INCH "Y" BRANCHES		No. of Permit		House Number		DATE OF PERMITS		
	GROUND	GRADE			North West	South East	North West	South East	North West	South East	North West	South East	
LAT 346, SOUTHWEST INTERCEPTOR (CONT. FROM N-260)													
LINE 6	0+00 L-6	133.40	118.86 out	14.5	0+00 = 1+85.7 L-5								
		133.40	123.60 in	9.8				98-1210-7		10362 Haskell ct		1-16-98	
		134.80	124.00	10.8	0+67.2			97-10145-7		10358 Haskell		6-10-97	
LINE 7	0+00 L-7	135.60	119.53 out	16.1	0+00 = 3+28.8 L-5								
		135.60	125.59 in	10.0				98-7532-7		10347 Haskell		4-21-98	
		135.90	126.00	9.9	0+69.0	4" STUB NW 126.33		98-1212-7		10346 Haskell		1-16-98	
LATERAL 24, MAIN 2, SOUTHWEST INTERCEPTOR SEWER													
	0+00	88.80	79.15	9.7	0+00 EXIST								
	1+00	88.70	79.55	9.1									
	2+00	88.40	79.95	8.5									
		88.44	80.26 out	8.2	2+77.0								
		88.44	80.36 in	8.1				97-15314-7		5014 Broadway		9-8-97	
	3+00	88.30	80.45	7.9									
	4+00	88.60	80.85	7.8									
	5+00	89.00	81.25	7.8									
		89.35	81.29 out	8.1	5+12.61	4" NE 81.62							
		89.35	81.39 in	8.0									
		89.10	81.71	7.4	5+92.61	4" SW 82.04	4" SE 82.04	97-11101-7	2002 63356	5015 Broadway	403# SOUTH ST	6-20-97	12720-2
LATERAL 71, MAIN 5, SANITARY SEWER NO. 23													
LINE 1	0+00 L-1	169.31	156.80	12.5	0+00 EXIST								
	0+30.1	169.30	156.92	12.4				98-17170-7		2724 BATTIN		9-1-98	
	1+00	168.70	157.20	11.5				98-401-7		2720 BATTIN		1-11-99	
								98-27259-7		2716 BATTIN		11-13-98	
	2+00	168.80	157.60	11.2				99-10894-7		2711 BATTIN		5-24-99	
		169.90	157.95	11.9	2+88.5 = 0+00 L-2			98-6572-7		2708 BATTIN		4-16-98	
	3+00	169.50	158.00	11.5									
								97-13314-7		2704 BATTIN		8-5-97	
	4+00	170.40	158.40	12.0									
		171.20	158.57	12.6	4+42.9		4+45 4" E 8V11H	99-10874-7		2700 BATTIN		5-24-99	
	5+00	171.20	159.48	11.7			5+10 4" E 8V15H						
		173.10	160.61	12.5	5+70.7								
	6+00	173.50	161.08	12.4			5+85 4" SE 8V9H	98-22736-7		2622 BATTIN		11-13-98	
							6+40 4" SE 9V9H	98-17171-7		2608 BATTIN		9-4-98	
	7+00	175.70	162.68	13.0			7+15 4" SE 9V9H	98-12381-7		2614 BATTIN		7-8-98	
		177.70	164.25	13.5	7+98.2								
	8+00												
	8+28.2	177.50	164.73	12.8	PLUG								
LINE 2	0+00 L-2	169.90	158.15	11.8	0+00 = 2+88.5 L-1								
						0+95 4" N 8V14H		97-		2739 BATTIN ct		11-21-97	
	1+00	171.00	158.55	12.5		1+55 4" N 10V14H	1+05 4" S 9V4H	98-1637-7		2741 BATTIN ct		6-4-98	
					1+83.0 = 0+00 L-3								
	2+00	173.50	158.95	14.6		2+20 4" N 11V14H	1+95 4" S 11V4H	99-52737 98-8321-7		2743 BATTIN ct	2725 BATTIN ct	3-22-99	5-15-98
						2+80 4" N 12V14H	2+70 4" S 12V4H	98-16571-7		2721 BATTIN ct		4-16-98	
	3+00	175.10	159.35	15.8		3+30 4" N 12V14H		97-20275-7		2749 BATTIN ct		11-13-97	
		176.60	159.56 out	17.0	3+56.7								
		176.60	159.76 in	16.8									
	4+00	177.00	160.13	16.9		3+70 4" NE 12V8H	4+10 4" SW 13V10H	98-8330-7	97-1253-7	2744 BATTIN ct	2727 BATTIN ct	5-15-98	1-22-99
						4+25 4" NE 13V6H		98-14723-7		2751 BATTIN ct		8-10-98	
	5+00	178.70	160.90	17.8									
		181.00	161.41 out	19.6	5+70.0 = 0+00 L-4								
		181.00	161.61 in	19.4									
	6+00	180.20	162.51	17.7		6+10 4" NW 11V4H		98-14722-7		2753 BATTIN ct		8-15-97	
		179.70	164.91	14.8	6+93.9	4" N 10V5H		99-22216-7		2755 BATTIN ct		11-13-97	
LINE 3	0+00 L-3	173.70	159.07	14.6	0+00 = 1+83.0 L-2								
	1+00	173.70	159.47	14.2			0+95 4" E 9V14H	98-14095-7		2735 BATTIN		7-23-98	
		174.60	159.59	15.0	1+30.8	4" NE 11V11H		98-25604-7		2729 BATTIN		7-8-98	
LINE 4	0+00 L-4	181.00	161.61	19.4	0+00 = 5+70.0 L-2								
						0+90 4" NE 13V4H	0+10 4" NE 13V4H	97-1248-7		2713 BATTIN ct		1-22-99	
	1+00	179.10	162.01	17.1									
						1+70 4" NE 12V4H	1+70 4" NE 12V4H	98-22154-7		2704 BATTIN ct		11-13-98	
	2+00	178.00	162.41	15.6		2+35 4" NE 11V4H	2+35 4" NE 11V4H	98-14724-7		2705 BATTIN ct		8-10-98	
		178.00	162.73	15.3	2+79.7	4" NE 11V4H	4" STUB NE 11V4H	98-12594-7		2701 BATTIN ct		7-8-98	