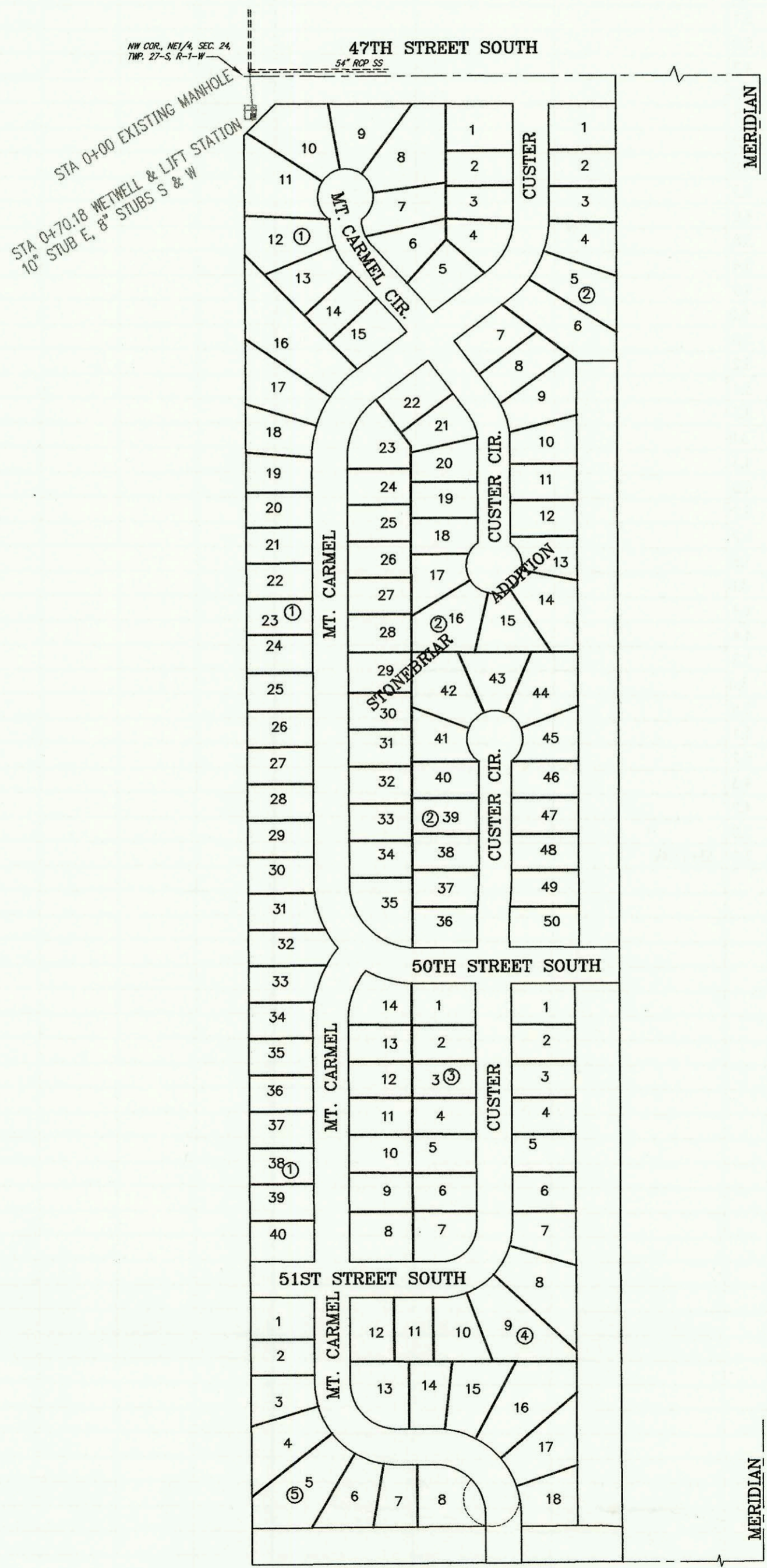


LIFT STATION AND FORCE MAIN FOR
LATERAL 371 & 372, SOUTHWEST INTERCEPTOR SEWER
PROJECT NO. 468-82638 (742874)
BUILT BY NOWAK CONSTRUCTION CO.
BOOKED 7/1/97 PER PLAN

WY



SCALE: 1" = 200'



NW COR., NE1/4, SEC. 24,
TWP. 27-S, R-1-W

47TH STREET SOUTH
54' ROP SS

MERIDIAN

MT. CARMEL

CUSTER

CUSTER CIR.

CUSTER CIR.

CUSTER CIR.

50TH STREET SOUTH

MT. CARMEL

CUSTER

51ST STREET SOUTH

MT. CARMEL

MERIDIAN

