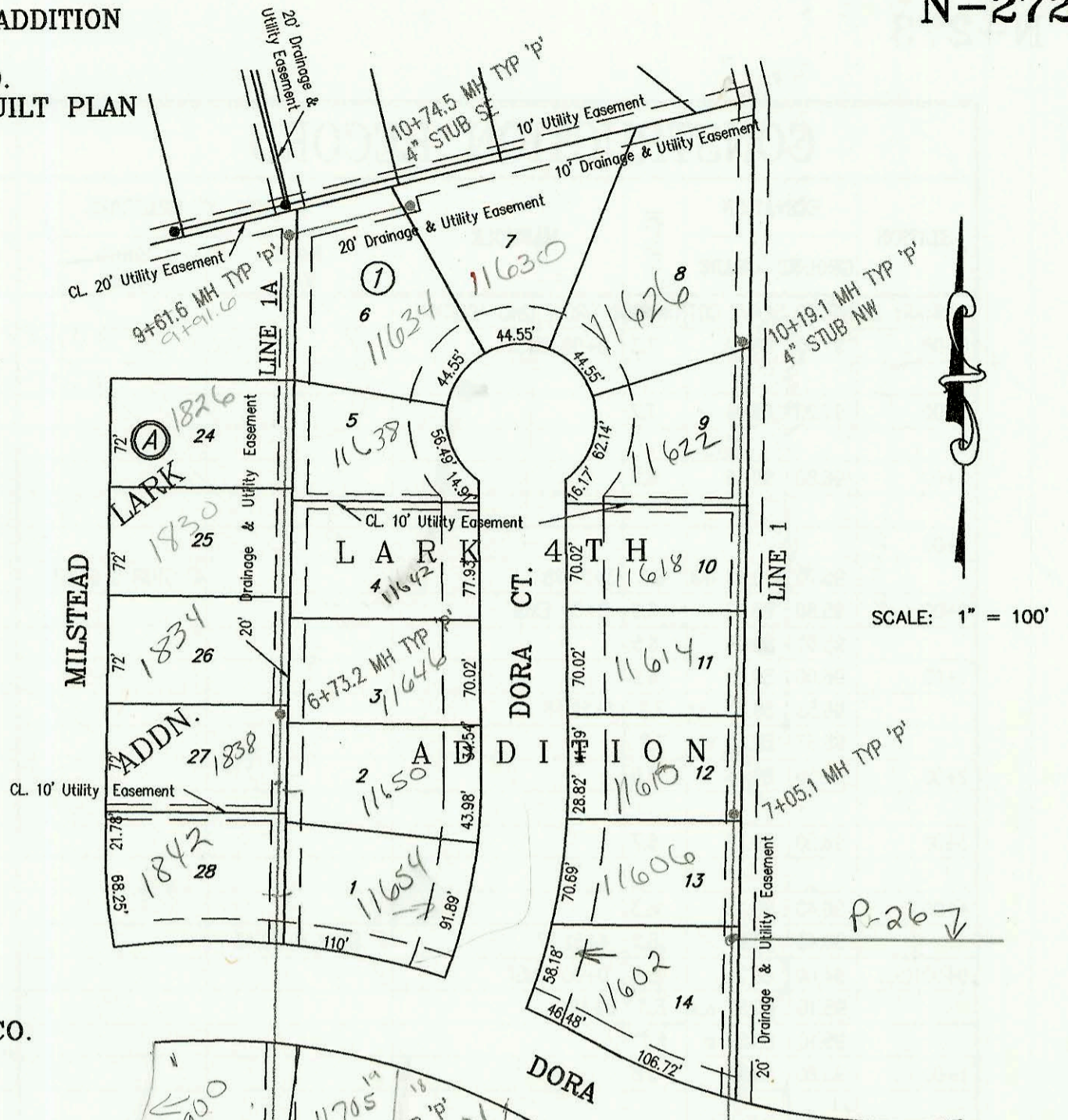


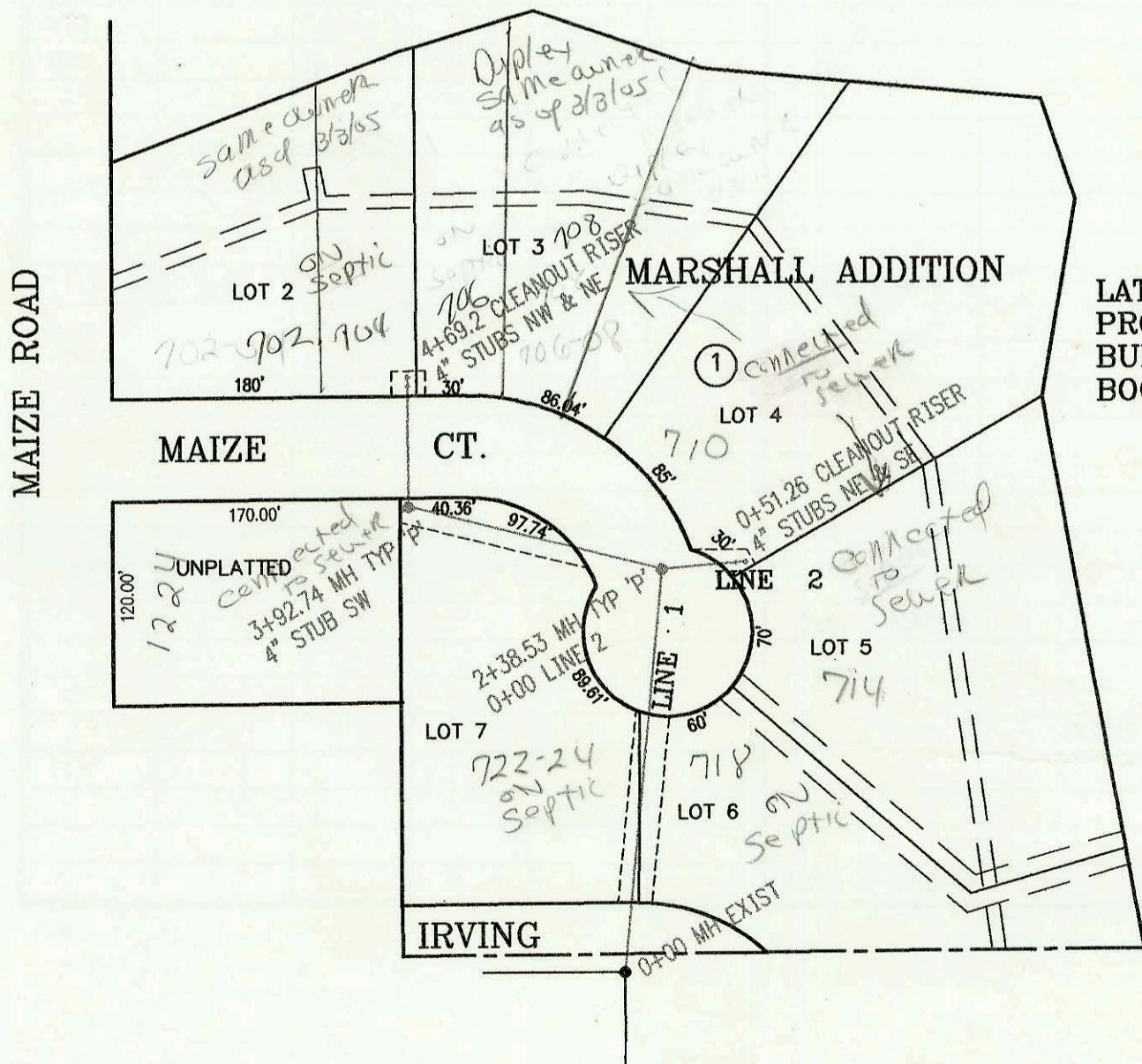
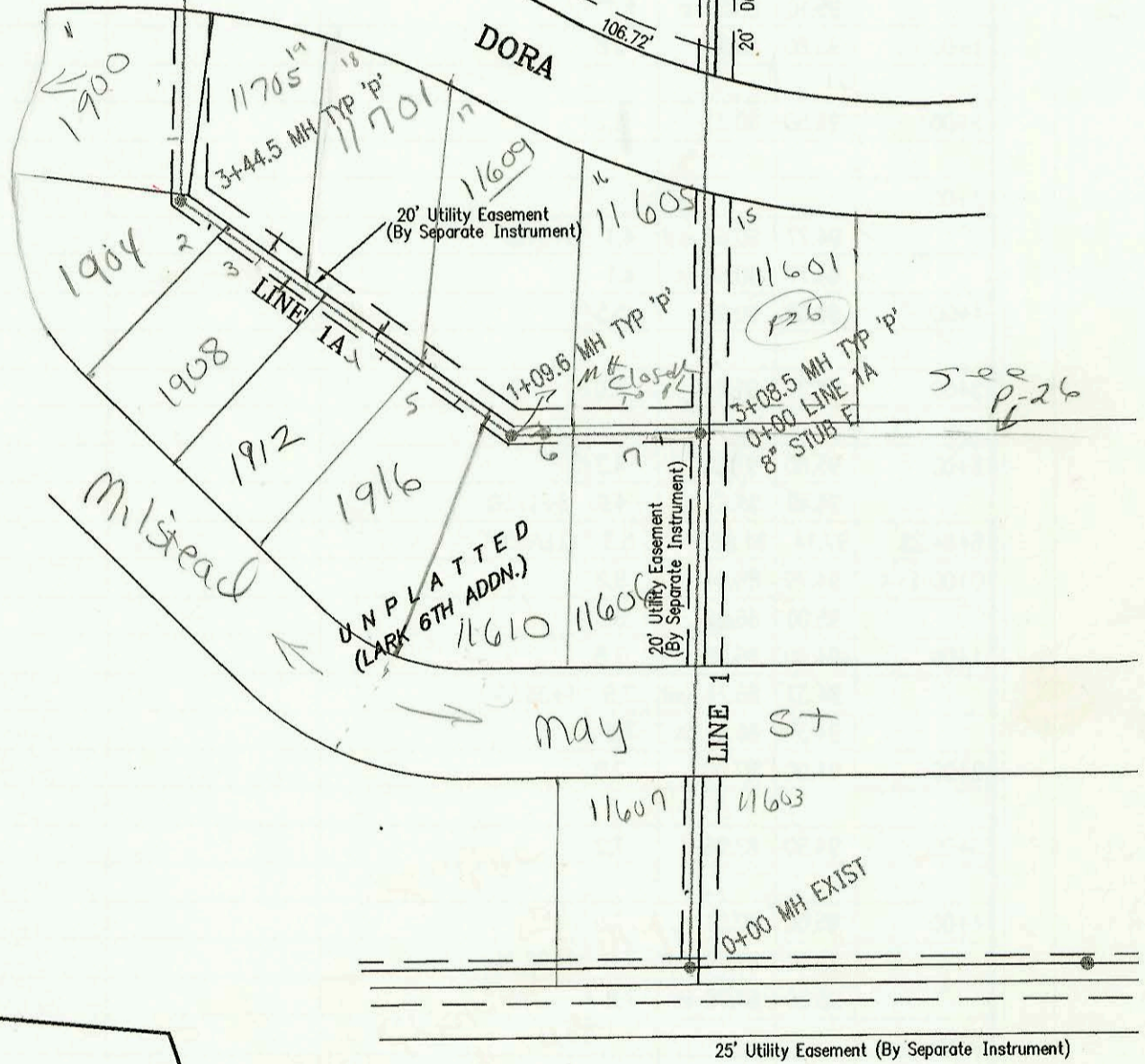
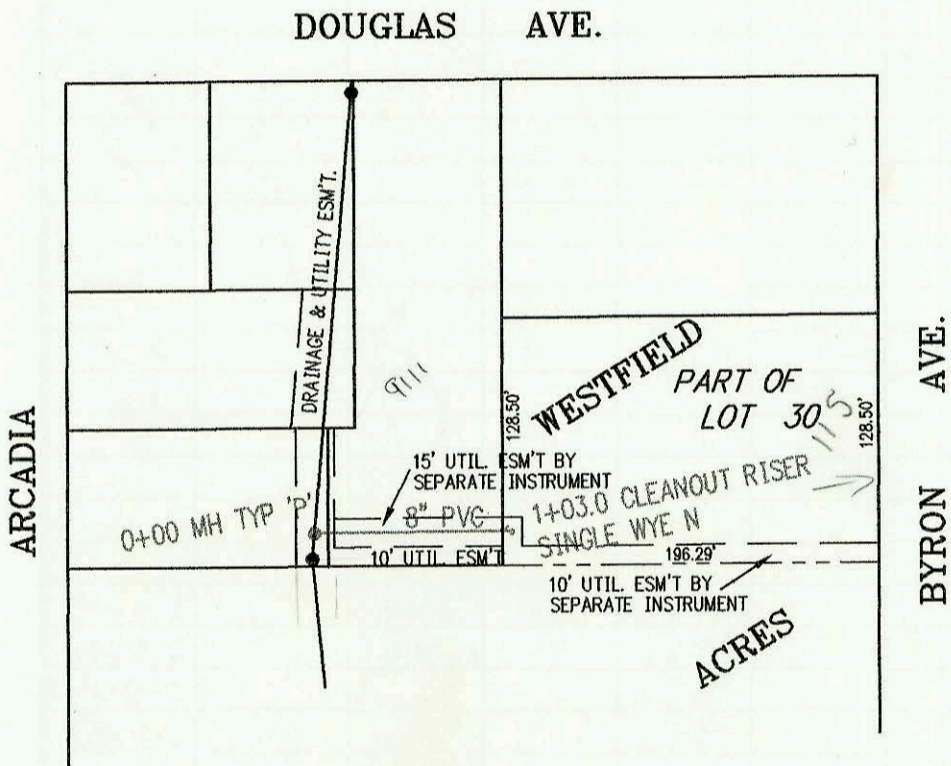
SANITARY SEWER FOR LARK 4TH ADDITION
PROJECT NO. 673PPS
BUILT BY MIES CONSTRUCTION CO.
BOOKED 9/18/97 PER AS BUILT PLAN



SCALE: 1" = 100'



LATERAL 31, MAIN 1, WESTLINK SEWER
PROJECT NO. 468-82753 (743229)
BUILT BY W. B. CARTER CONSTRUCTION CO.
BOOKED 9/29/97 PER PLAN



LATERAL 26, MAIN 1, COWSKIN INTERCEPTOR SEWER
PROJECT NO. 468-82573 (742635)
BUILT BY H. D. MILLS CONSTRUCTION CO.
BOOKED 9/30/97 PER AS BUILT PLAN



SCALE: 1" = 100'

CONSTRUCTION RECORD						SERVICE RECORD						
STATION	ELEVATION		DEPTH	MANHOLE	4-INCH "Y" BRANCHES		No. of Permit		House Number		DATE OF PERMITS	
	GROUND	GRADE			North West	South East	North West	South East	North West	South East	North West	South East
SANITARY SEWER FOR LARK 4TH ADDITION												
0+00 L-1	144.50	126.78 out	17.7	0+00 EXIST								
	144.50	128.09 in	16.4		0+40 4" N 13V10H	0+45 4" S 13V5H						
1+00	144.00	128.65	15.4		0+45	0+40	98-23477	99-6017	11607 W May	11603 May	11-25-98	4-1-99
2+00	144.20	129.21	15.0									
3+00	143.10	129.76	13.3									
	143.40	129.81 out	13.6	3+08.5 = 0+00 L-1A		8" STUB E 130.00						
	143.40	129.94 in	13.5		3+58 4" W 8V5H							
4+00	143.00	130.78	12.2									
5+00	143.30	131.69	11.6									
6+00	143.40	132.60	10.8				98-3607		1162 DORA CT		12-31-97	
							98-13567		11606 DORA CT		7-21-98	
7+00	142.90	133.51	9.4				98-3607		11610 DORA CT		3-3-98	
	143.46	133.56 out	9.9	7+05.1								
	143.46	133.69 in	9.8				97-174757		11614 DORA CT		10-2-97	
8+00	142.80	134.11	8.7				98-11927		11618 DORA CT		7-16-98	
9+00	142.20	134.55	7.7				97-196207		11622 DORA CT		1-4-97	
10+00	142.00	134.99	7.0									
	142.56	135.07	7.5	10+19.1	4" STUB NW 135.33		98-225327		11626 DORA CT		11-23-98	
0+00 L-1A	143.40	129.90	13.5	0+00 = 3+08.5 L-1								
					0+28 4" N 9V10H	0+23 4" S 10V5H	98-225347	99-54157	11605 DORA	11606 May	11-23-98	3-26-99
1+00	143.00	130.42	12.6			0+92 4" S 9V5H	99-29117		11610 May			2-11-99
	143.65	130.47 out	13.2	1+09.6								
	143.65	130.59 in	13.1		1+50 4" N 9V10H	1+45 4" S 9V5H	98-157927	99-23647	11609 DORA	11616 Milstead	8-3-98	3-4-99
2+00	144.20	130.95	13.3		2+04 4" N 9V10H	1+99 4" S 9V5H	99-94317	99-60947	11611 DORA	11617 Milstead	5-5-99	4-1-99
					2+86 4" N 10V10H	2+68 4" S 10V5H	99-4627	99-40657	11705 DORA	11618 Milstead	1-6-99	3-3-99
3+00	145.50	131.34	14.2			3+24 4" S 10V5H	99-00654		11619 Milstead			9-13-99
	146.45	131.52 out	14.9	3+44.5								
	146.45	131.65 in	14.8		3+80 4" W 10V5H		99-58607		11600 Milstead		3-30-99	
4+00	145.80	131.87	13.9									
5+00	144.80	132.27	12.5									
					5+54 4" W 8V5H	5+47 4" E 8V10H	97		11612 Milstead		11-17-97	
6+00	142.90	132.68	10.2		6+29 4" W 8V5H	6+22 4" E 8V10H	98-36027	98-167507	11613 Milstead	11600 DORA CT	3-3-98	9-2-98
	141.70	132.97 out	8.7	6+73.2			98-196947	98-167397	11614 Milstead	11616 DORA	10-8-98	9-2-98
	141.70	133.07 in	8.6				98-108257	98-20847	11615 Milstead	11612 DORA CT	6-17-98	2-10-98
7+00	141.70	133.18	8.5									
8+00	141.30	133.60	7.7									
							98-11837	98-194607	11616 Milstead	11613 DORA CT	6-30-98	10-12-98
9+00	142.50	134.02	8.5									
	142.65	134.40 out	8.3	9+91.6								
	142.65	134.53 in	8.1									
10+00	142.10	134.56	7.5									
	142.95	134.85	8.1	10+74.5		4" STUB SE 135.15	98-135597		11630 DORA CT		7-21-98	
LATERAL 31, MAIN 1, WESTLINK SEWER												
0+00	148.00	139.14	8.9	0+00								
1+00	145.80	139.63	6.2	1+03.0 CLEANOUT	4" WYE N		97-171117		1155 Byron		9-26-97	
LATERAL 26, MAIN 1, COWSKING INTERCEPTOR SEWER												
0+00 L-1	127.50	106.47	21.0	0+00 EXIST								
1+00	129.00	118.12	10.9									
2+00	127.60	119.39	8.2									
	124.40	119.88 out	4.5	2+38.53 = 0+00 L-2								
	124.40	119.98 in	4.4									
3+00	128.40	120.23	8.2									
	128.85	120.60 out	8.3	3+92.74	4" NW 121.03		2000-00405 97-72077		2245 Milstead		2/14/00 10-10-97	
	128.85	120.70 in	8.2									
4+00	130.00	120.73	9.3									
	129.60	120.98	8.6	4+69.2 CLEAN-OUT RISER	W/4" DB. WYE		2005 05984		11618 Milstead			3-3-05
0+00 L-2	127.67	119.98	7.7	0+00 = 2+38.53 L-1								
	127.10	120.16	6.9	0+51.26 CLEAN-OUT RISER	W/4" DB. WYE	4" SCH 40 connected to 8X8X4 WYE	98-123537	2000- 00322	11615 Milstead	11614 Milstead	7-4-97	