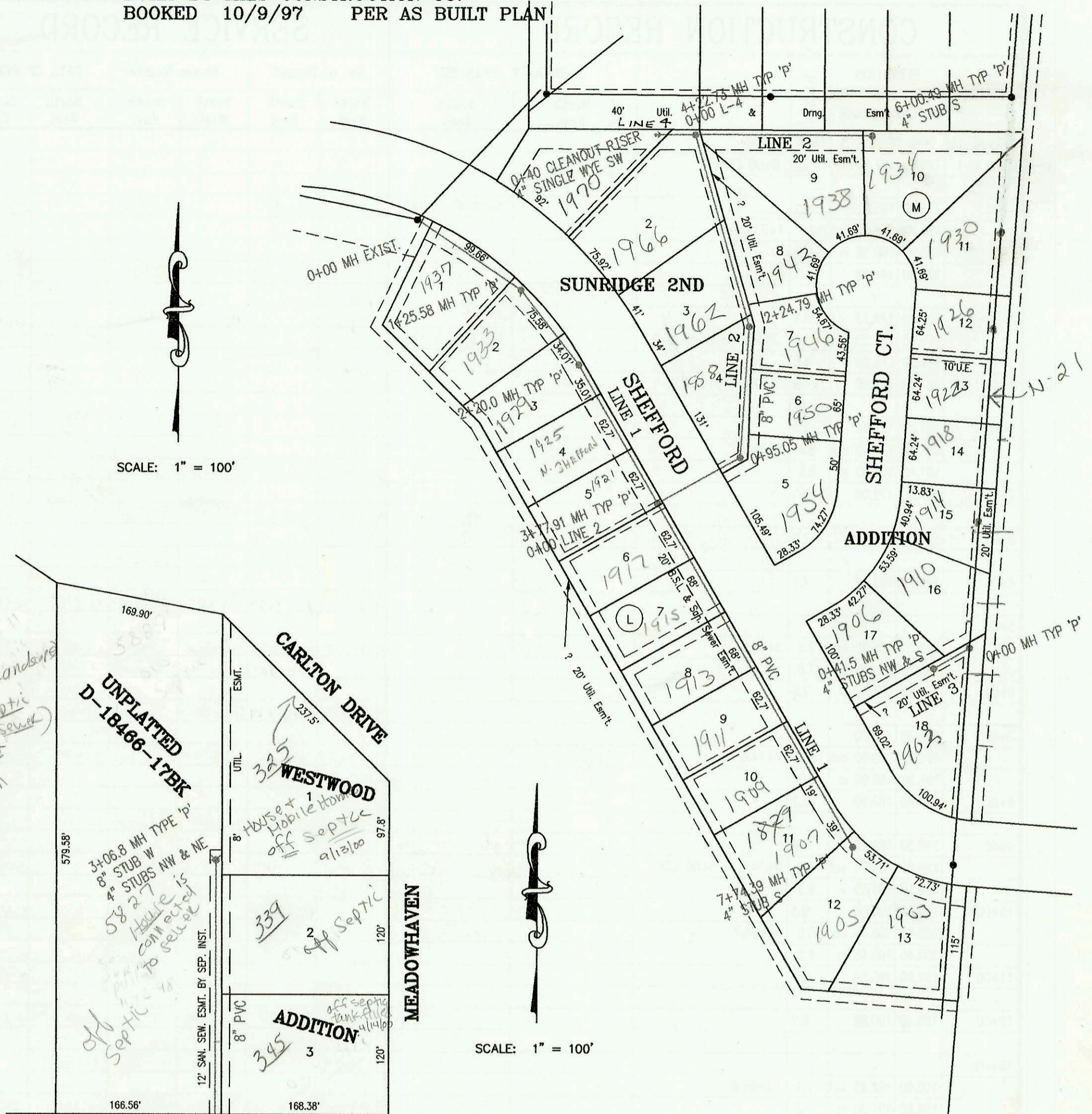
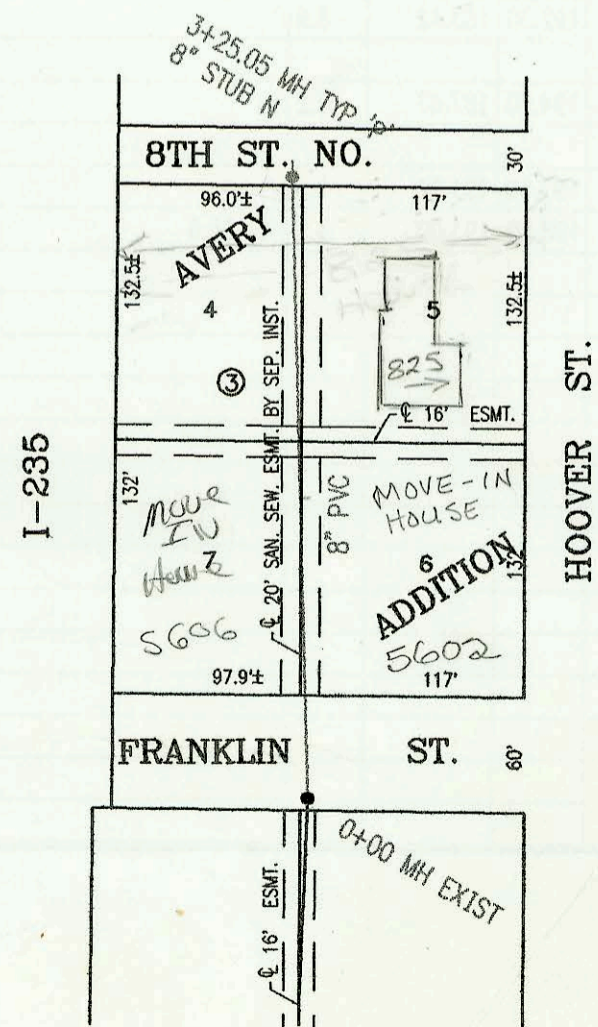


LATERAL 31, MAIN 12, SOUTHWEST INTERCEPTOR SEWER
 PROJECT NO. 468-82156 (743021)
 BUILT BY MIES CONSTRUCTION CO.
 BOOKED 10/9/97 PER AS BUILT PLAN

N-275A



LATERAL 55, MAIN 4, SOUTHWEST INTERCEPTOR SEWER
 PROJECT NO. 468-82431 (742163)
 BUILT BY K. C. EXCAVATING CO.
 BOOKED 10/9/97 PER PLAN



LATERAL 268, MAIN 5, SANITARY SEWER NO. 22
 PROJECT NO. 468-82690 (743054)
 BUILT BY W. B. CARTER CONSTRUCTION CO.
 BOOKED 10/13/97 PER PLAN

CONSTRUCTION RECORD						SERVICE RECORD						
STATION	ELEVATION		DEPTH	MANHOLE	4-INCH "Y" BRANCHES		No. of Permit		House Number		DATE OF PERMITS	
	GROUND	GRADE			North West	South East	North West	South East	North West	South East	North West	South East
LATERAL 31, MAIN 12, SOUTHWEST INTERCEPTOR SEWER												
0+00 L-1	159.00	144.74	14.3	0+00 EXIST	0+45 4" SW 12V2H		98-1351-7		1937 Shefford		6-24-98	
1+00	160.20	147.77	12.4									
	160.60	148.54 out	12.1	1+25.58	4" STUB S 148.98			99-1365-7	1933 Shefford		6-24-99	
2+00	160.10	148.98	11.1									
	160.90	149.02 out	11.9	2+20.0			99-13623-7		1929 Shefford		6-24-99	
	160.90	149.12 in	11.8				98-13907-7		1923 Shefford		7-8-98	
3+00	159.80	149.44	10.4				98-13862-7		1921 Shefford		7-27-98	
	160.00	149.75 out	10.3	3+77.91 = 0+00 L-2								
	160.00	149.85 in	10.1				98-13861-7		1911 Shefford		7-27-98	
4+00	159.70	149.94	9.8				98-13906-7		1915 Shefford		7-27-98	
5+00	159.90	150.34	9.6				98-13866-7		1912 Shefford		7-27-98	
							98-13864-7		1911 Shefford		7-27-98	
6+00	160.00	150.74	9.3				98-13863-7		1904 Shefford		7-27-98	
					4" sch 40 7+66.4		98-3804-7		1900 Shefford	Below	2-11-98	
7+00	160.30	151.14	9.2									
	161.00	151.44	9.6	7+74.39	4" stub SW 151.78		98-15914-7		1905 Shefford		8-26-98	
0+00 L-2	160.10	149.85	10.3	0+00 = 3+77.91 L-1								
	160.40	150.23 out	10.2	0+95.05			98-19471-7		1954 Shefford		10-12-98	
	160.40	150.33 in	10.1				98-15925-7		1950 Shefford		8-26-98	
1+00	160.10	150.35	9.8									
2+00	160.60	150.75	9.9				99-13677-7	98-22905-7	1958 Shefford	1946 Shefford	6-24-99	11-25-98
	161.20	150.85 out	10.3	2+24.79								
	161.20	150.95 in	10.3				99-13657-7	99-2913-7	1962 Shefford	1942 Shefford	6-24-99	2-8-99
3+00	160.60	151.25	9.4									
4+00	160.50	151.65	8.9				99-13627-7		1966 Shefford		6-24-99	
	160.90	151.74 out	9.2	4+22.73								
	160.90	151.84 in	9.1									
5+00	161.50	152.15	9.4									
									98-17030-7	1938 Shefford		9-2-98
6+00	162.70	152.55	10.1									
	163.40	152.56	10.8	6+00.49	4" STUB S 152.99		98-17014-7		1934 Shefford		9-2-98	
0+00 L-3	160.90	151.70	9.2	0+00 EXIST								
	161.00	151.87	9.1	0+41.5	4" STUB NW 152.21 4" STUB SW 152.21		99-01272		1906 Shefford		11-26-99	
0+00 L-4	160.90	151.84	9.1	0+00 = 4+22.73 L-2								
	160.58	152.00	8.6	0+40.0 CLEANOUT RISER	SINGLE WYE SW		98-22897-7		1990 Shefford		11-25-98	
LATERAL 55, MAIN 4, SOUTHWEST INTERCEPTOR SEWER												
0+00	116.72	109.41	7.3	0+00 EXIST								
					4" sch 40 1+23.8			2000 0908		345 Mendonham		4-13-00
1+00	117.20	109.81	7.4									
2+00	117.60	110.21	7.4					2002 02329		339 Mendonham		8/26/02
3+00	117.80	110.61	7.2									
	118.21	110.64	7.6	3+06.8	8" STUB W 110.74 4" STUB NW 110.97 4" STUB NE 110.97		98-21477-7	2000 01996	5827 W Maple	House 385 S. Carlton	11-12-98	9-11-00
LATERAL 268, MAIN 5, SANITARY SEWER NO. 22												
0+00	124.32	115.74	8.6	0+00 EXIST								
					4" sch 40 1+55 Saddle		2003-00229	2001-01629	5606 Franklin	5602 Franklin	1-25-03	7-10-01
1+00	125.00	116.14	8.9									
2+00	125.00	116.54	8.5									
							99-17873-7		825 Haver		9-23-97	
3+00	124.50	116.94	7.6									
	125.90	117.03	8.9	3+25.05	8" STUB N 117.13							

1907 N Shefford address originally issued as 1829 N Shefford