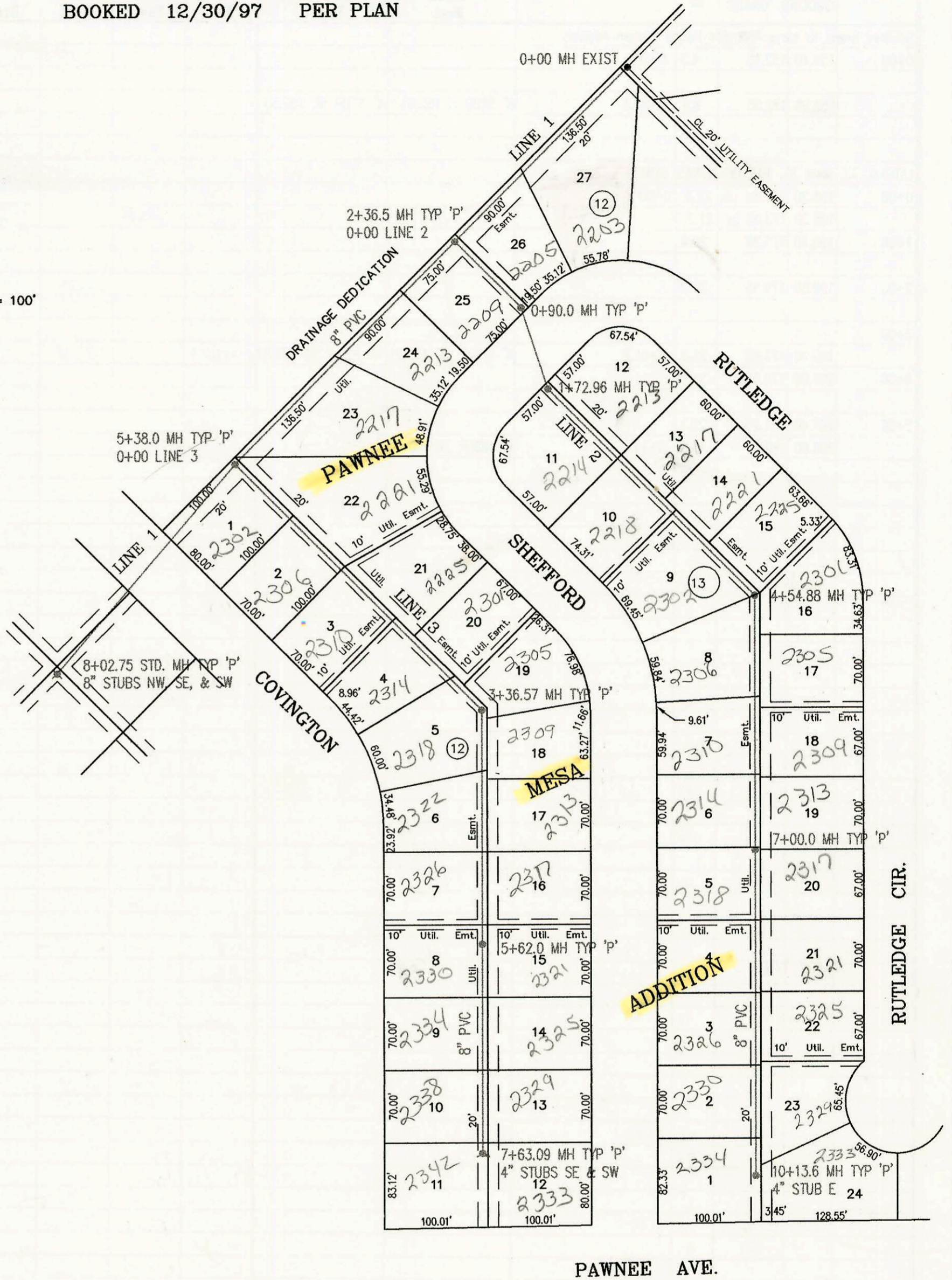


LATERAL 16, MAIN 13, SOUTHWEST INTERCEPTOR SEWER  
PROJECT NO. 468-82701 (743096)  
BUILT BY NOWAK CONSTRUCTION CO.  
BOOKED 12/30/97 PER PLAN

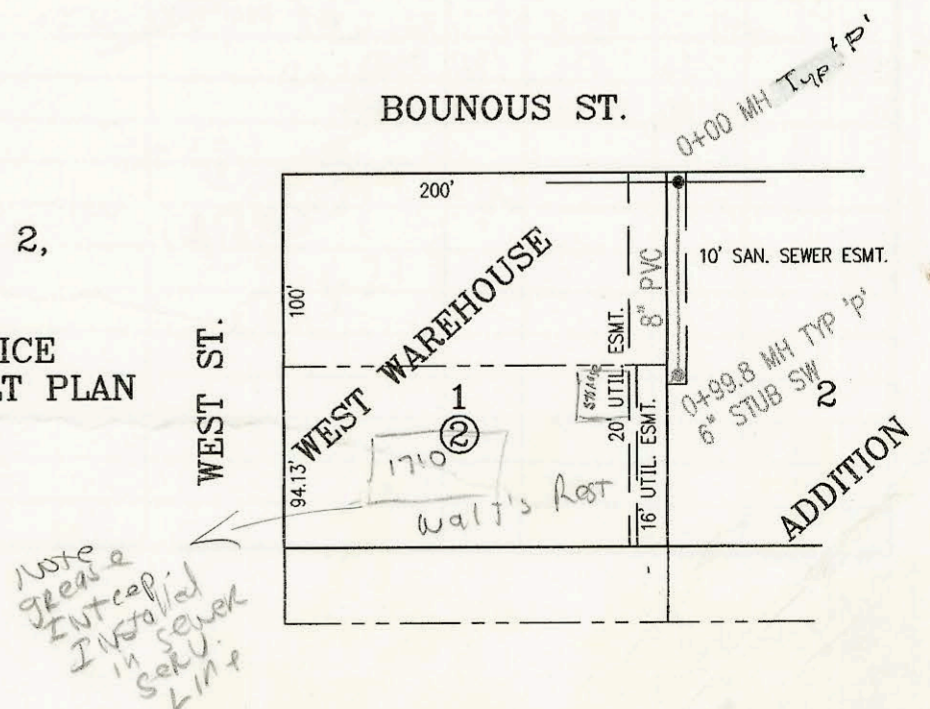
SCALE: 1" = 100'



PAWNEE AVE.

SAN. SEWER FOR PART LOT 1, BLK. 2,  
WEST WAREHOUSE ADDITION  
PROJECT NO. 733PPS  
BUILT BY AL HENNING SEWER SERVICE  
BOOKED 12/30/97 PER AS BUILT PLAN

SCALE: 1" = 100'



Use  
ideas &  
intercept  
in sewer  
serv. line

CONSTRUCTION RECORD						SERVICE RECORD						
STATION	ELEVATION		DEPTH	MANHOLE	4-INCH "Y" BRANCHES		No. of Permit		House Number		DATE OF PERMITS	
	GROUND	GRADE			North West	South East	North West	South East	North West	South East	North West	South East
LAT 16, MAIN 13, SOUTHWEST INTERCEPTOR SEWER												
0+00 L-1	143.10	131.70	11.4	0+00 EXIST				98-9678-7		2203 Shefford		6-5-98
1+00	142.70	132.10	10.6			4" SCH 40 0+60	DL TAP	2001- 01059		2205 Shefford		5-1-01
2+00	142.70	132.50	10.2									
	143.10	132.65	10.5	2+35.5 = 0+00 L-2		4" SCH 40 2+91.5	DL TAP	2001- 01060		2209 Shefford		5-1-01
3+00	142.70	132.90	9.8					98-17909-7		2213 Shefford		9-18-98
4+00	142.60	133.30	9.3									
5+00	142.40	133.70	8.7					98-22248-7		2211 Shefford		11-16-98
	142.70	133.85	8.8	5+38.0 = 0+00 L-3								
6+00	144.20	134.10	10.1									
7+00	145.20	134.50	10.7									
8+00												
	144.20	134.91	9.3	8+02.75	8" N & S 135.14	8" STUB W 135.04						
0+00 L-2	143.10	132.88	10.2	0+00 = 2+35.5 L-1								
	143.70	133.24	10.5	0+90.0								
1+00	143.20	133.28	9.9									
	143.70	133.57	10.1	1+72.96				98-9674-7	98-2937-7	2214 Shefford	2213 Rutledge	6-5-98 2-1-98
2+00	143.50	133.68	9.8									
3+00	144.00	134.08	9.9					98-7095-7	98-2230-7	2218 Shefford	2217 Rutledge	4-20-98 11-16-98
									99-6571-7	2219 Rutledge	2218 Rutledge	4-8-99
4+00	144.50	134.48	10.0					98-1616-7	98-9675-7	2302 Shefford	2225 Rutledge	8-26-98 6-5-98
	145.10	134.70	10.4	4+54.88					98-9677-7	2303 Rutledge	2302 Rutledge	6-5-98
5+00	144.90	134.88	10.0					98-1605-7	98-1325-7	2306 Shefford	2305 Rutledge	8-26-98 7-14-98
								98-2444-7	98-5147-7	2310 Shefford	2304 Rutledge	12-10-98 4-2-98
6+00	145.40	135.28	10.1									
								98-9676-7	98-4504-7	2311 Shefford	2313 Rutledge	6-5-98 3-8-98
7+00	145.80	135.68	10.1	7+00.0								
								98-24140-7	98-1805-7	2318 Shefford	2317 Rutledge	12-10-98 2-2-98
8+00	144.70	136.08	8.6					98-14946-7	98-4504-7	2322 Shefford	2321 Rutledge	8-6-98 3-18-98
								98-14927-7	98-4501-7	2320 Shefford	2325 Rutledge	7-27-98 3-18-98
9+00	143.80	136.48	7.3									
								98-15114-7	98-1806-7	2320 Shefford	2324 Rutledge	8-19-98 2-2-98
10+00	143.50	136.88	6.6									
	144.00	136.93	7.1	10+13.16		4" STUB E 137.26		98-4496-7	98-9674-7	2334 Shefford	2333 Rutledge	3-18-98 6-5-98
0+00 L-3	142.70	134.08	8.6	0+00 = 5+38.0 L-1	4" SCH 40 8+18.3			2000- 01450		2302 COVINGTON		6-19-00
1+00	142.60	134.48	8.1					98-14944-7	99-6570-7	2306 Covington	2211 Shefford	8-6-98 4-8-99
2+00	143.20	134.88	8.3					98-2674-7	98-14943-7	2310 Covington	2225 Shefford	10-21-98 8-7-98
								98-1616-7	1029-00065	2314 Covington	2301 Shefford	8-26-98 6-18-99
3+00	143.70	135.28	8.4					98-7542-7		2318 Covington		5-5-98
	144.30	135.43	8.9	3+36.57	4" SCH 40 3+54.57	SADDLE			2000- 02377	2308 S Shefford		10-31-00
4+00	144.30	135.68	8.6					99-2905-7	02220	2322 Covington	2309 Shefford	2-10-99 9-6-01
								98-17163-7	78-24142-7	2326 Covington	2303 Shefford	9-18-98 12-10-98
5+00	144.80	136.08	8.7						98-9518-7	2317 Shefford		5-20-98
	145.30	136.33	9.0	5+62.0				98-2674-7	98-9517-7	2330 Covington	2321 Shefford	10-21-98 5-20-98
6+00	144.60	136.48	8.1									
								98-14821-7	98-24144-7	2334 Covington	2325 Shefford	7-27-98 10-10-98
7+00	144.20	136.88	7.3					98-24141-7	98-24143-7	2338 Covington	2324 Shefford	12-10-98 12-10-98
	144.20	137.13	7.1	7+63.09	4" STUB SW 137.46	4" STUB SE 137.46		98-7540-7	99-2903-7	2342 Covington	2333 Shefford	5-5-98 2-10-99
SANITARY SEWER FOR PART OF LOT 1, BLK. 2, WEST WAREHOUSE ADDITION												
0+00	111.28	106.33	5.0	0+00								
	111.90	106.86	5.0	0+99.8	4" SCH 40 6" STUB SW	6" STUB SW 106.91		9703401000		1710 West		8/7/97