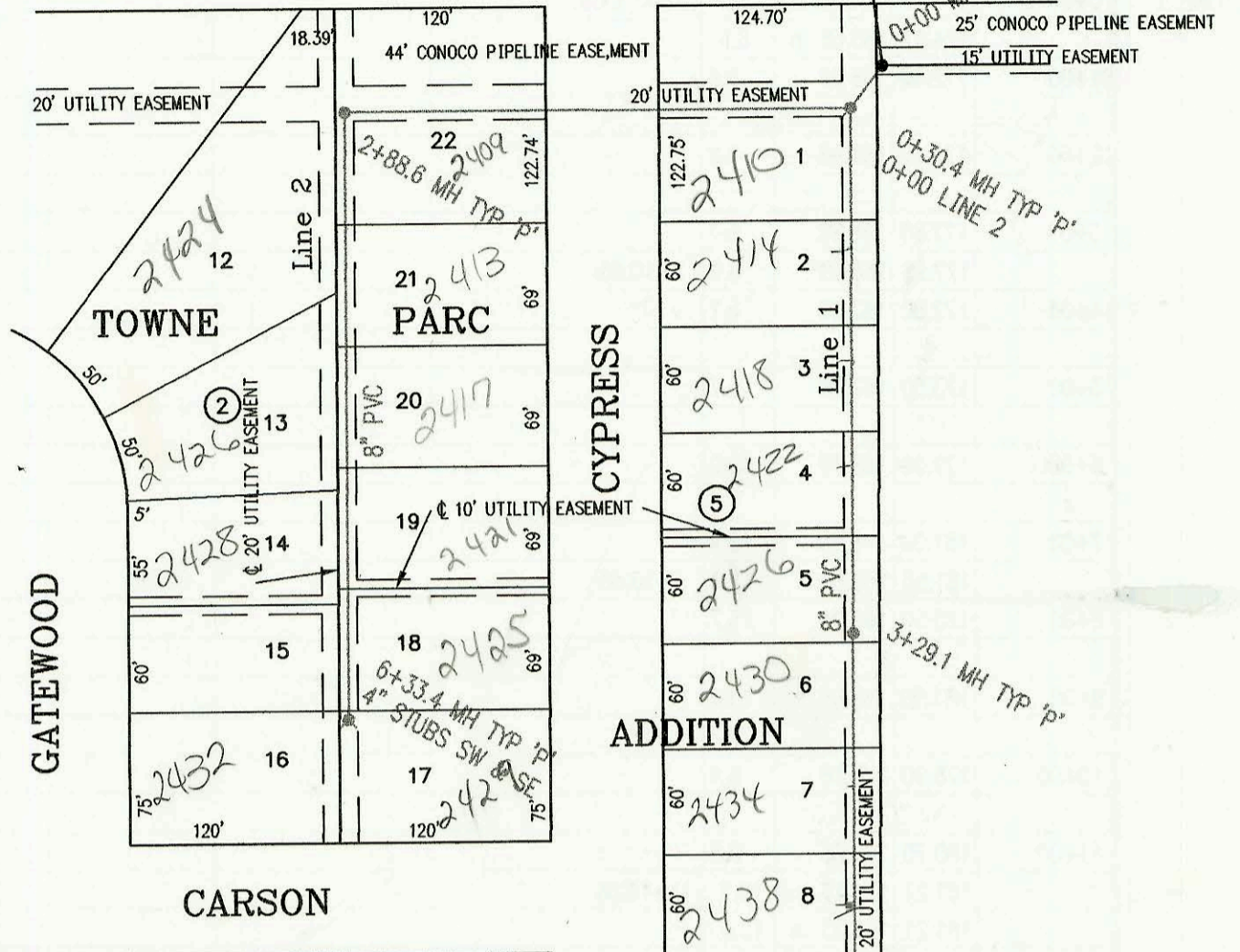


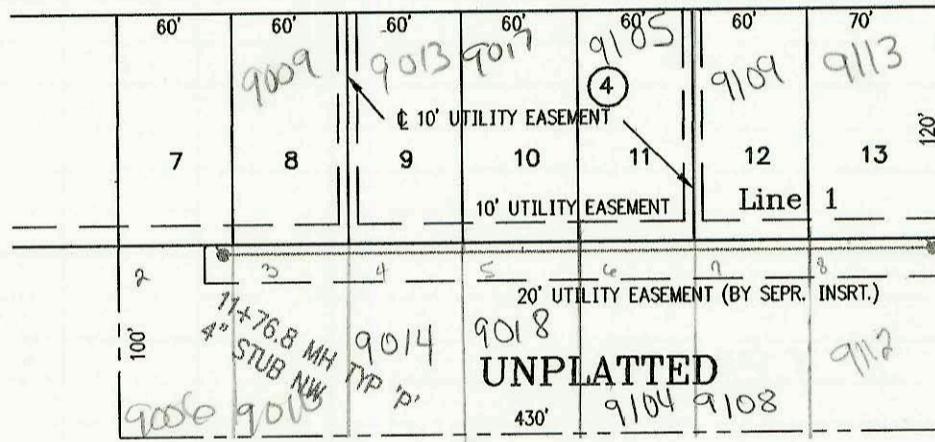
SANITARY SEWER TO SERVE PART OF
TOWNE PARC ADDTION (Phase 3)
PROJECT NO. 712PPS
BUILT BY MEIS CONSTRUCTION CO.
BOOKED 2/5/98 PER AS BUILT PLAN

*Not in Review
AS of 6-25-98*

PAWNEE



SCALE: 1" = 100'



SCOTT ST

*Refer to
plans
not booked yet
8/22/00*

