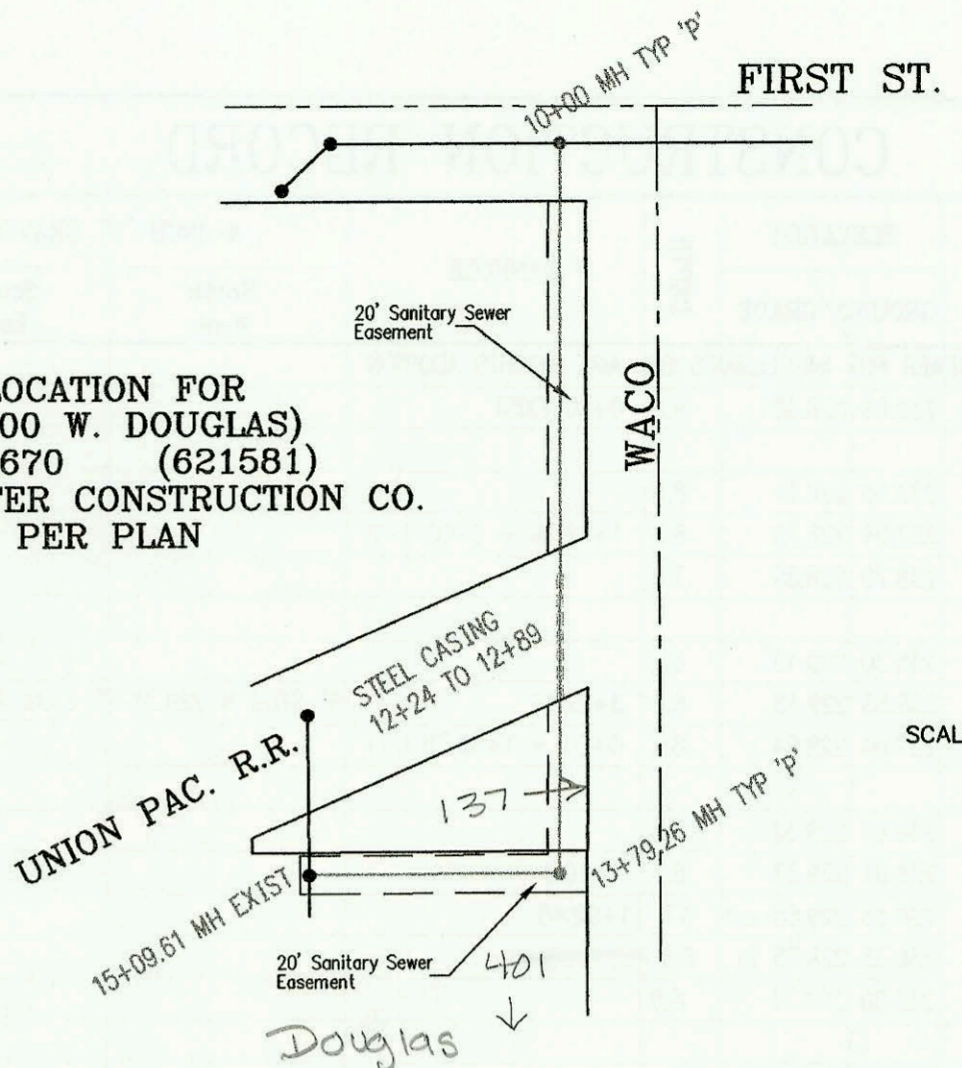
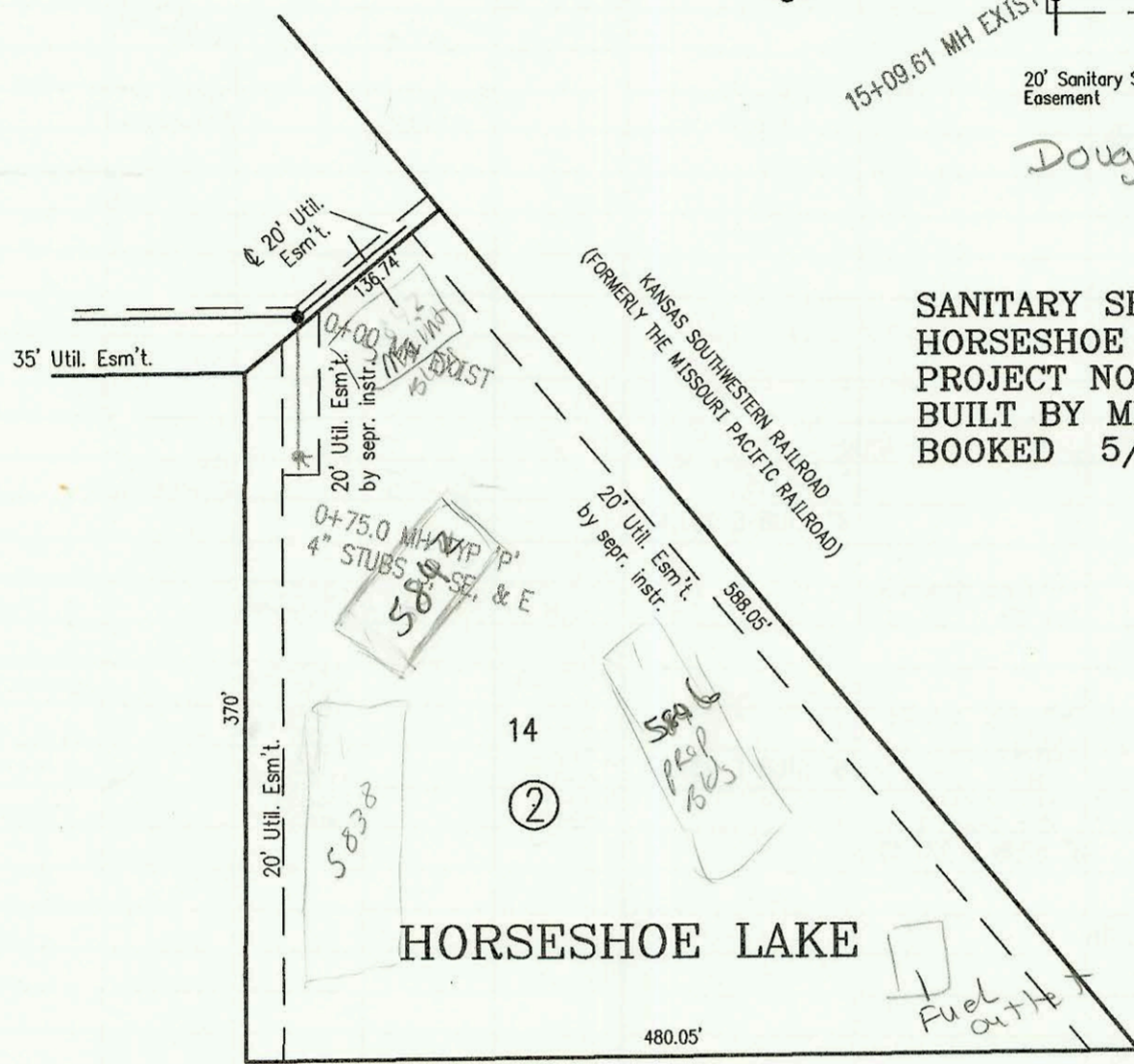


SANITARY SEWER RELOCATION FOR
BROADVIEW HOTEL (400 W. DOUGLAS)
PROJECT NO. 468-82670 (621581)
BUILT BY W. B. CARTER CONSTRUCTION CO.
BOOKED 5/6/98 PER PLAN



SCALE: 1" = 100'



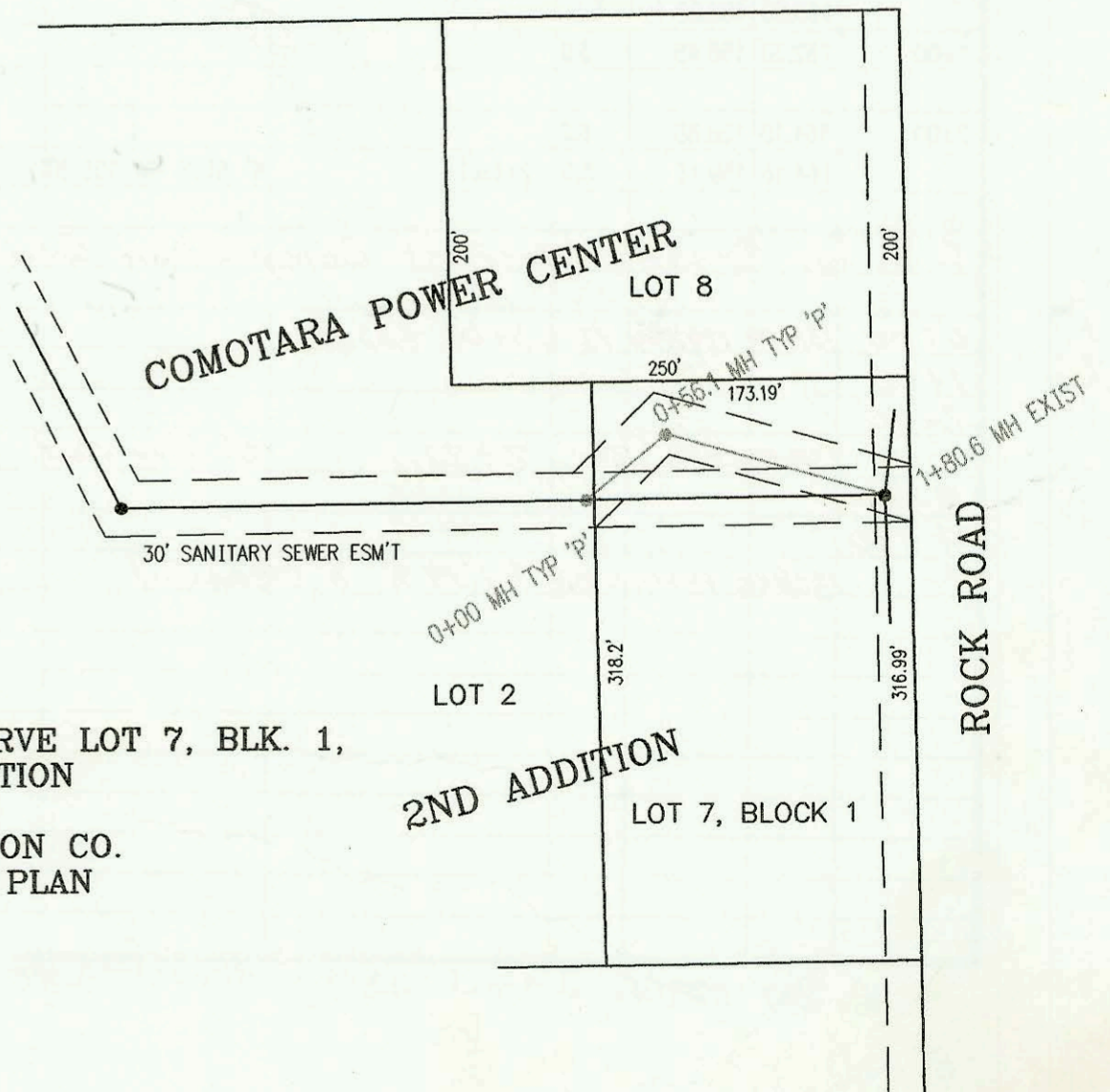
SANITARY SEWER TO SERVE LOT 14, BLK. 2,
HORSESHOE LAKE ADDITION
PROJECT NO. 768PPS
BUILT BY MIES CONSTRUCTION CO.
BOOKED 5/18/98 PER AS BUILT PLAN

SCALE: 1" = 100'



21ST STREET NORTH

36TH STREET NO.



SCALE: 1" = 100'



SANITARY SEWER RELOCATION TO SERVE LOT 7, BLK. 1,
COMOTARA POWER CENTER 2ND ADDITION
PROJECT NO. 771PPS
BUILT BY W. B. CARTER CONSTRUCTION CO.
BOOKED 5/18/98 PER AS BUILT PLAN

2ND ADDITION

ROCK ROAD

