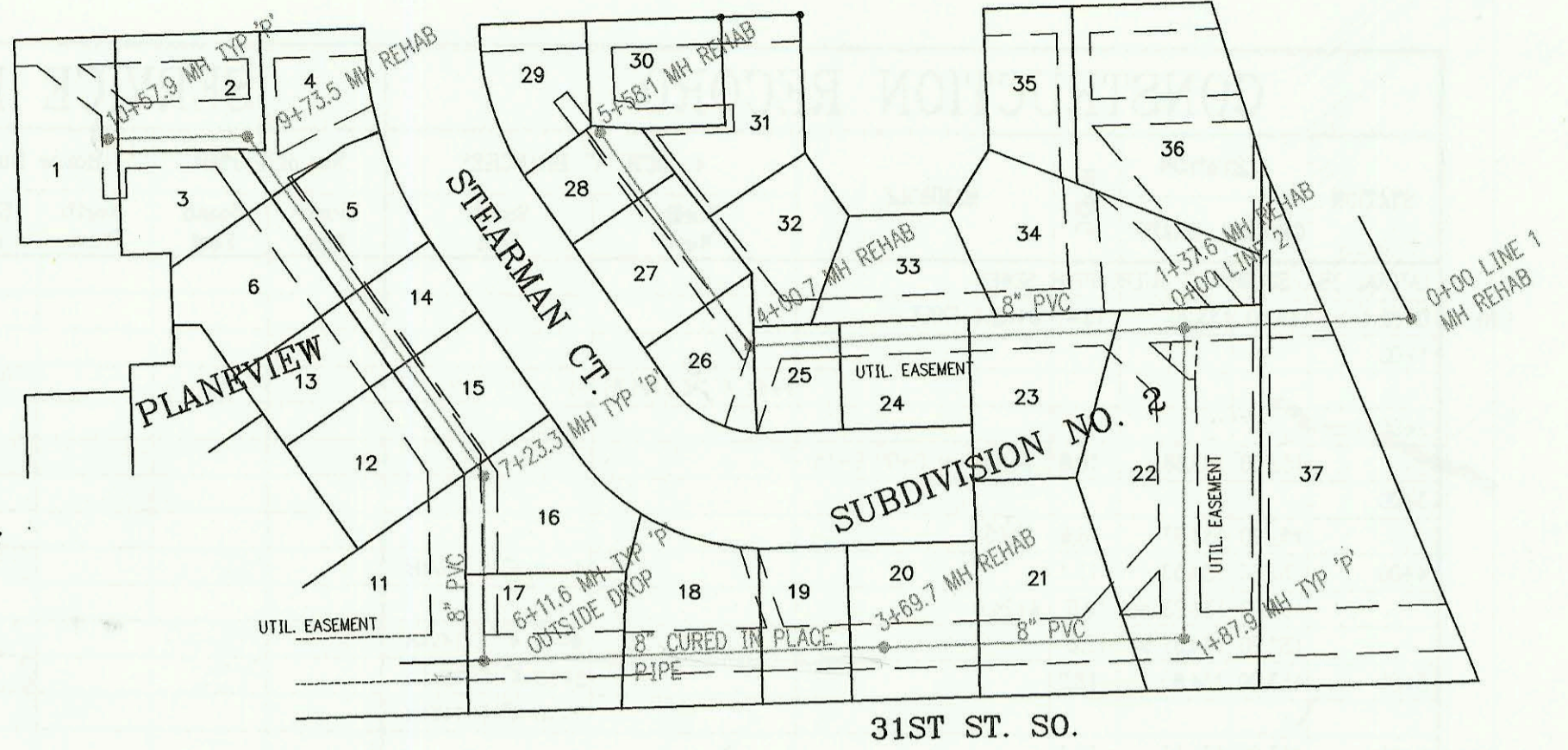


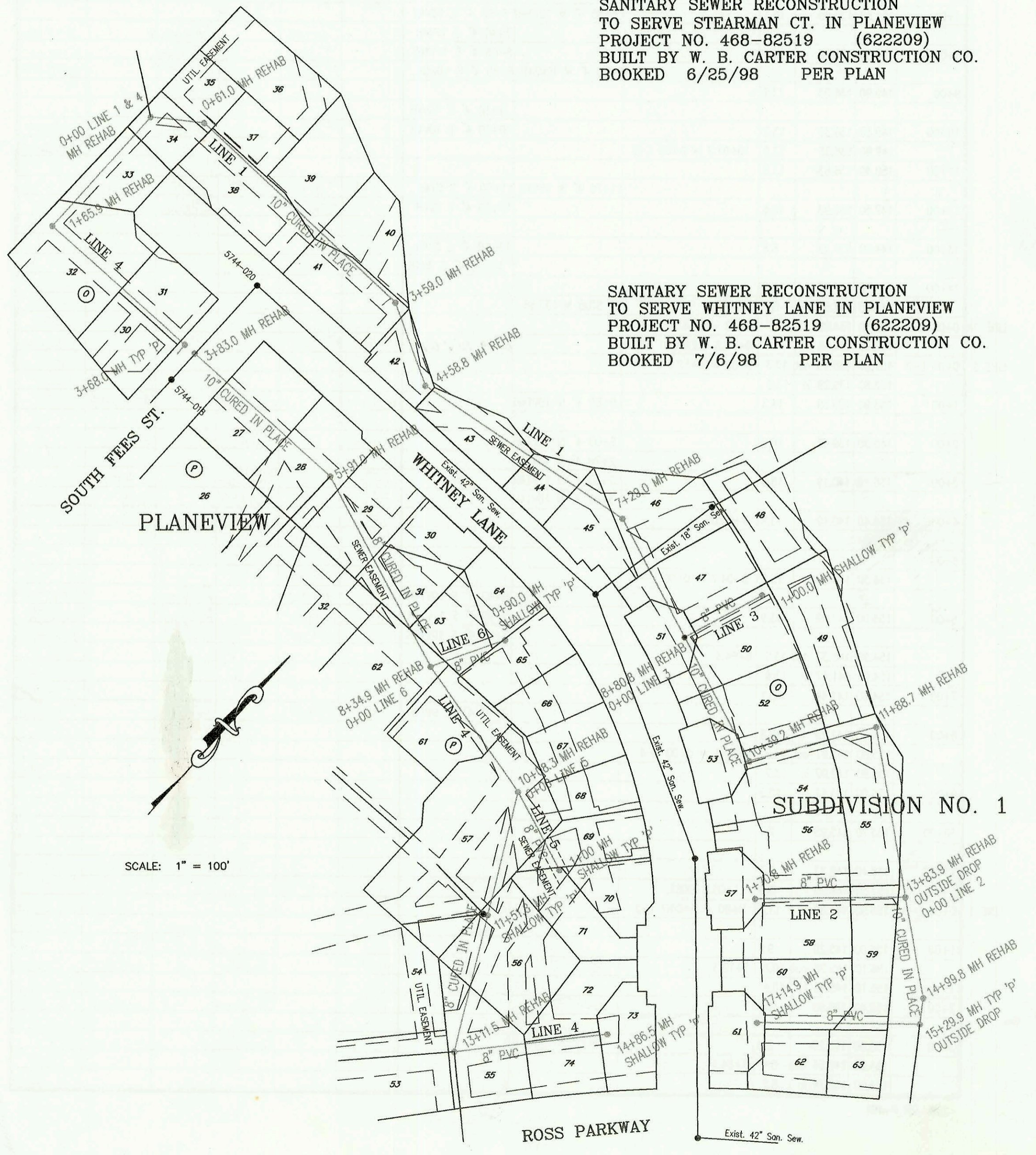
DUNHAM AVE.

SCALE: 1" = 100'

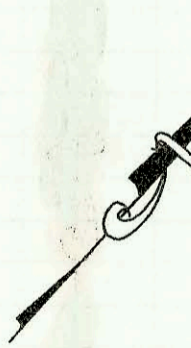


31ST ST. SO.

SANITARY SEWER RECONSTRUCTION
 TO SERVE STEARMAN CT. IN PLANEVIEW
 PROJECT NO. 468-82519 (622209)
 BUILT BY W. B. CARTER CONSTRUCTION CO.
 BOOKED 6/25/98 PER PLAN



SCALE: 1" = 100'



SANITARY SEWER RECONSTRUCTION
 TO SERVE WHITNEY LANE IN PLANEVIEW
 PROJECT NO. 468-82519 (622209)
 BUILT BY W. B. CARTER CONSTRUCTION CO.
 BOOKED 7/6/98 PER PLAN

SUBDIVISION NO. 1

ROSS PARKWAY

Exist. 42" San. Sew.

