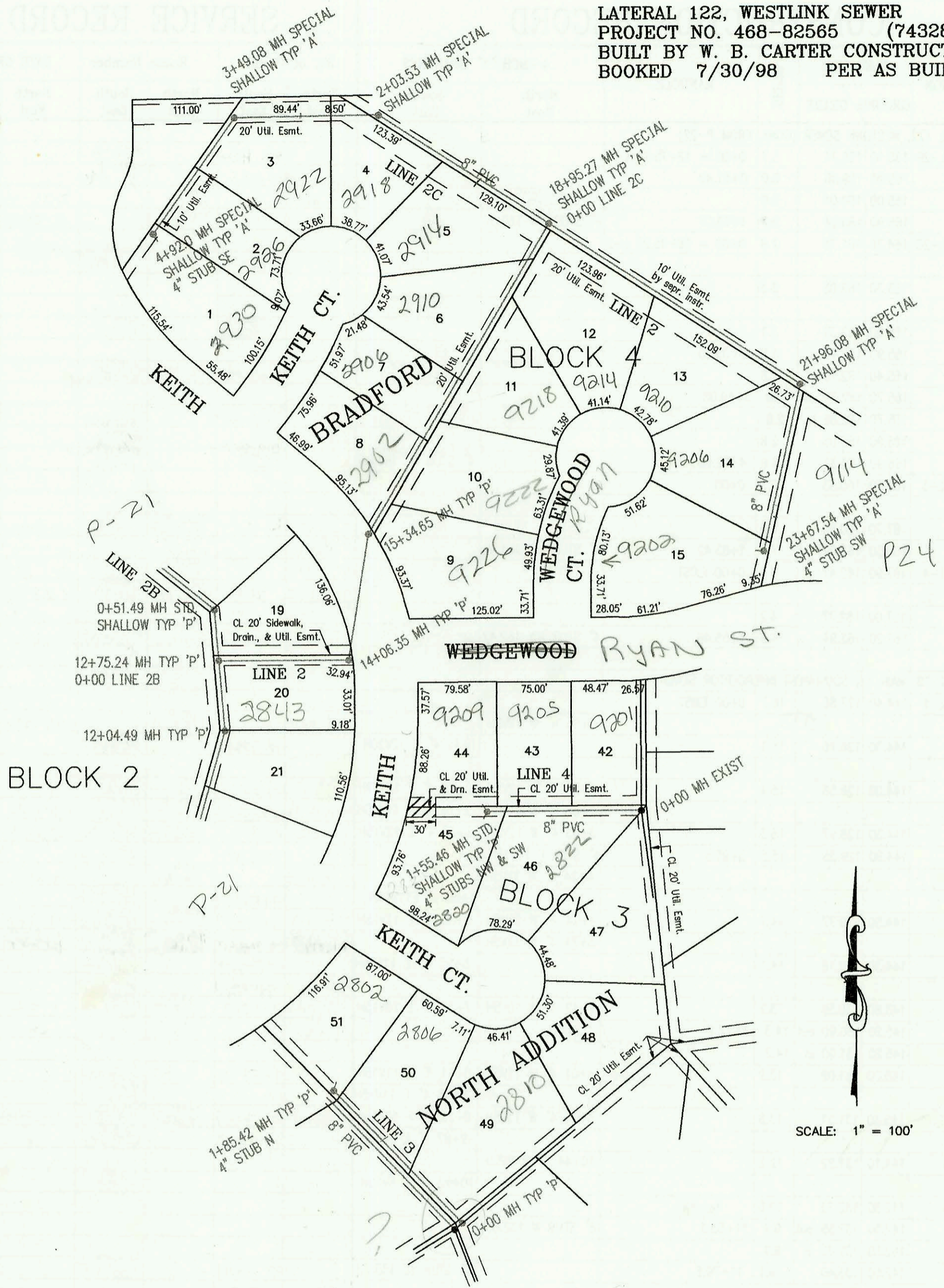


LATERAL 122, WESTLINK SEWER
PROJECT NO. 468-82565 (743286)
BUILT BY W. B. CARTER CONSTRUCTION CO.
BOOKED 7/30/98 PER AS BUILT PLAN



CONSTRUCTION RECORD						SERVICE RECORD						
STATION	ELEVATION		DEPTH	MANHOLE	4-INCH "Y" BRANCHES		No. of Permit		House Number		DATE OF PERMITS	
	GROUND	GRADE			North West	South East	North West	South East	North West	South East	North West	South East
LATERAL 122, WESTLINK SEWER (CONT. FROM P-21)												
LINE 2	0+00 L-2	162.70	155.55	7.1	0+00 = 3+88.17 L-1			98-182247		9585 Ryan Ct		9-23-99
	1+00	164.00	155.85	8.1								
	2+00	165.40	156.15	9.3		4" SCH 40 2+65.34		98-0968		9581 Ryan		4-19-06
		165.80	156.19	out 9.6	2+02.37							
		165.80	156.29	in 9.5				98-196517		9543 Ryan		10-14-99
	3+00	167.10	156.55	10.6								
		168.60	156.72	11.9	3+44.14							
	4+00	167.50	156.85	10.6								
		168.50	156.92	11.6	4+12.66	4" SCH 40 4+84.96		2000-06174		2803 Keith		1-25-00
	5+00	167.10	157.15	10.0								
		165.40	157.37	8.0	5+63.68 = 0+00 L-2A							
	6+00	165.00	157.45	7.6				99-31607		2807 Keith		2-10-99
	7+00	165.00	157.75	7.3								
	8+00	165.00	158.05	6.9		4" SCH 40 7+14.68		99-01317		2811 Keith		11-24-99
		165.40	158.12	7.3	8+11.89							
	9+00	165.00	158.35	6.6		4" SCH 40 8+18.89		2000-050		2819 Keith		1-11-2000
						4" SCH 40 8+27.89		2000-01323		2823 Keith		5-31-00
						4" SCH 40 9+60.49		2000-05571		2827 Keith		2-25-00
	10+00	165.00	158.65	6.4								
		165.40	158.88	out 6.5	10+62.68							
		165.40	158.98	in 6.4				99-15867		2835 Keith		1-27-99
	11+00	165.00	159.05	5.9								
	12+00	165.00	159.35	5.6								
		165.40	159.41	6.0	12+04.49			99-64267		2839 Keith		4-5-99
		165.40	159.61	out 5.8	12+75.24 = 0+00 L-2B			2001-02284		2843 Keith		9-12-01
		165.40	159.71	in 5.7								
	13+00	165.5	159.75									
	14+00	167.80	160.05	7.8								
		168.70	160.10	out 8.6	14+06.35							
		168.70	160.20	in 8.5								
	15+00	168.60	160.45	8.2								
		169.40	160.58	8.8	15+34.65			99-42767	98-238697	2912 Keith	9226 Ryan Ct	3-11-99 12-15-99
	16+00	166.70	160.75	5.9		4" SCH 40 16+96.65 Redco		2003-00197	99-107817	2906 Keith	9278 Ryan Ct	4-16-01
												1-21-03 5-21-99
	17+00	166.20	161.05	5.1				99-45467		2910 Keith		3-16-99
	18+00	165.80	161.35	4.4								
		164.70	161.63	out 3.1	18+95.27 = 0+00 L-2C	4" SCH 40 19+62.1 Saddle		2001-01015		9214 W RYAN CT		4-27-01
	19+00											
	20+00	164.80	162.05	2.8		4" SCH 40 21+05.5 Saddle		2001-01018		9210 W RYAN		4-27-01
	21+00	165.30	162.35	2.9								
		166.20	162.64	3.6	21+96.08							
	22+00					4" SCH 40 22+66.1 Saddle		2001-01019		9206 RYAN CT		4-27-01
	23+00	166.10	162.95	3.2								
		166.90	163.12	3.8	23+67.57	4" SCH 40 4" STUB SW 163.45	4" SCH 40 23+35.58	2001-01365	2000-00008	9202 W RYAN CT	9114 RYAN	6-4-01 1-4-00
LINE 2A	0+00 L-2A	165.40	157.47	7.9	0+00 = 5+63.68 L-2	4" SCH 40 5+04.66		99-01464		9520 RYAN		12-15-99
		165.40	157.74	out 7.7	0+91.05	4" SCH 40 1+00.05 SADDLE		2000-02785		9518 Ryan		12-27-00
		165.40	157.84	in 7.6								
	1+00	165.00	157.87	7.1		4" SCH 40 1+11.12		99-00929		9514 Ryan		10-15-99
		165.40	158.17	7.2	1+92.12							
	2+00	165.00	158.19	6.8		4" SCH 40 2+20.12		2000-01119		9510 RYAN		5-4-00
	3+00	165.00	158.49	6.5				2001-02327		9506 RYAN		9-18-01
								2001-02794		9502 Ryan		11-1-01
	4+00	165.00	158.79	6.2		4" SCH 40 4+62.9 saddle		2001-01666		9426 Ryan		7-3-01
		165.40	158.97	6.4	4+56.97							
	5+00	165.00	159.09	5.9		4" SCH 40 4+67.97		2000-00170		9422 W Ryan		1-20-2000
	6+00	165.00	159.35	5.6				2001-02283		9418 W RYAN		9-12-01
						4" SCH 40 6+32 Saddle		2001-01965		9414 W RYAN		8-9-01
	7+00	165.00	159.69	5.3		4" SCH 40 6+25.29		2000-09662		9410 Ryan		4-19-00
		165.40	159.74	5.7	7+13.29	4" STUB N 160.07		2000-07666		9406 W RYAN		8-2-00