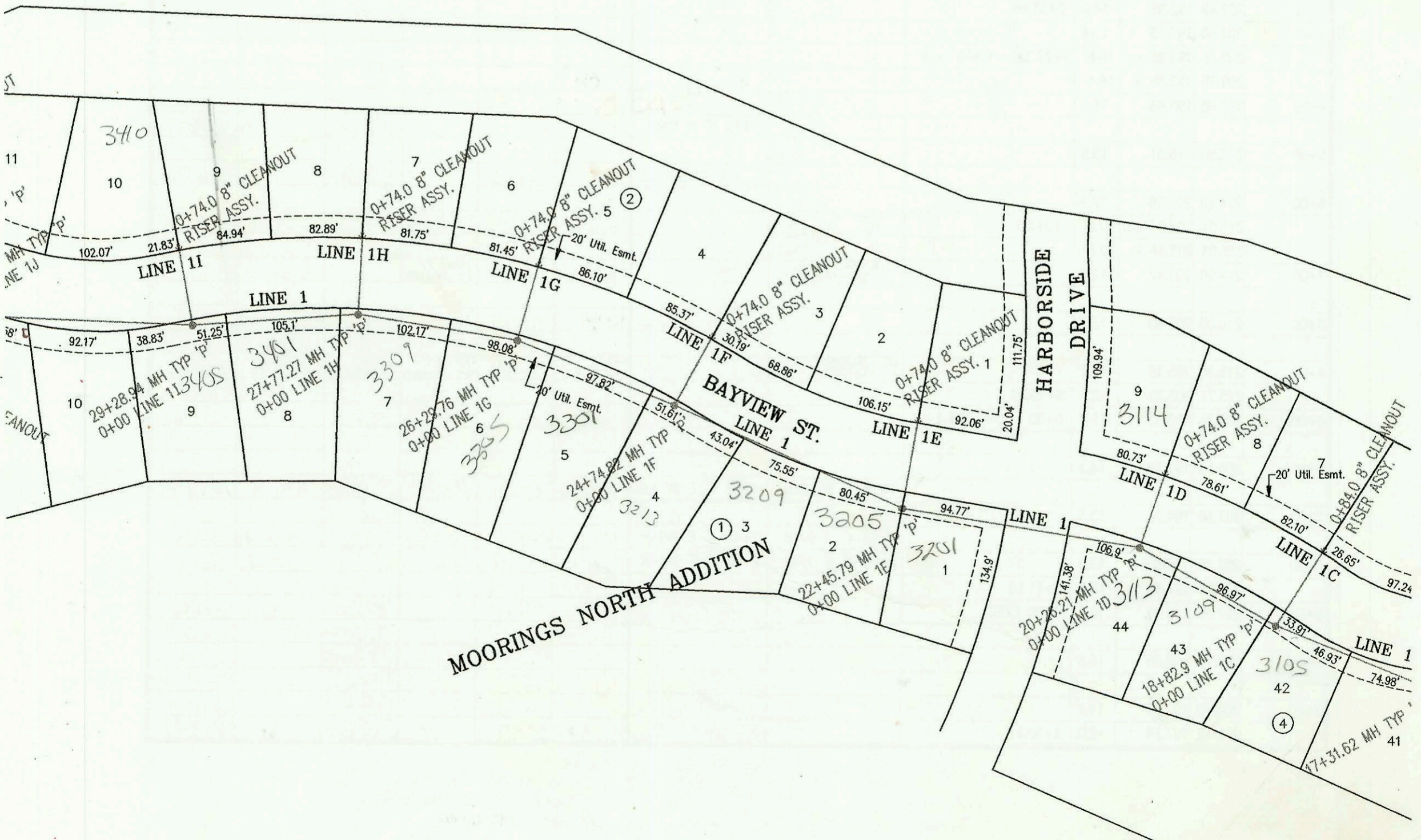
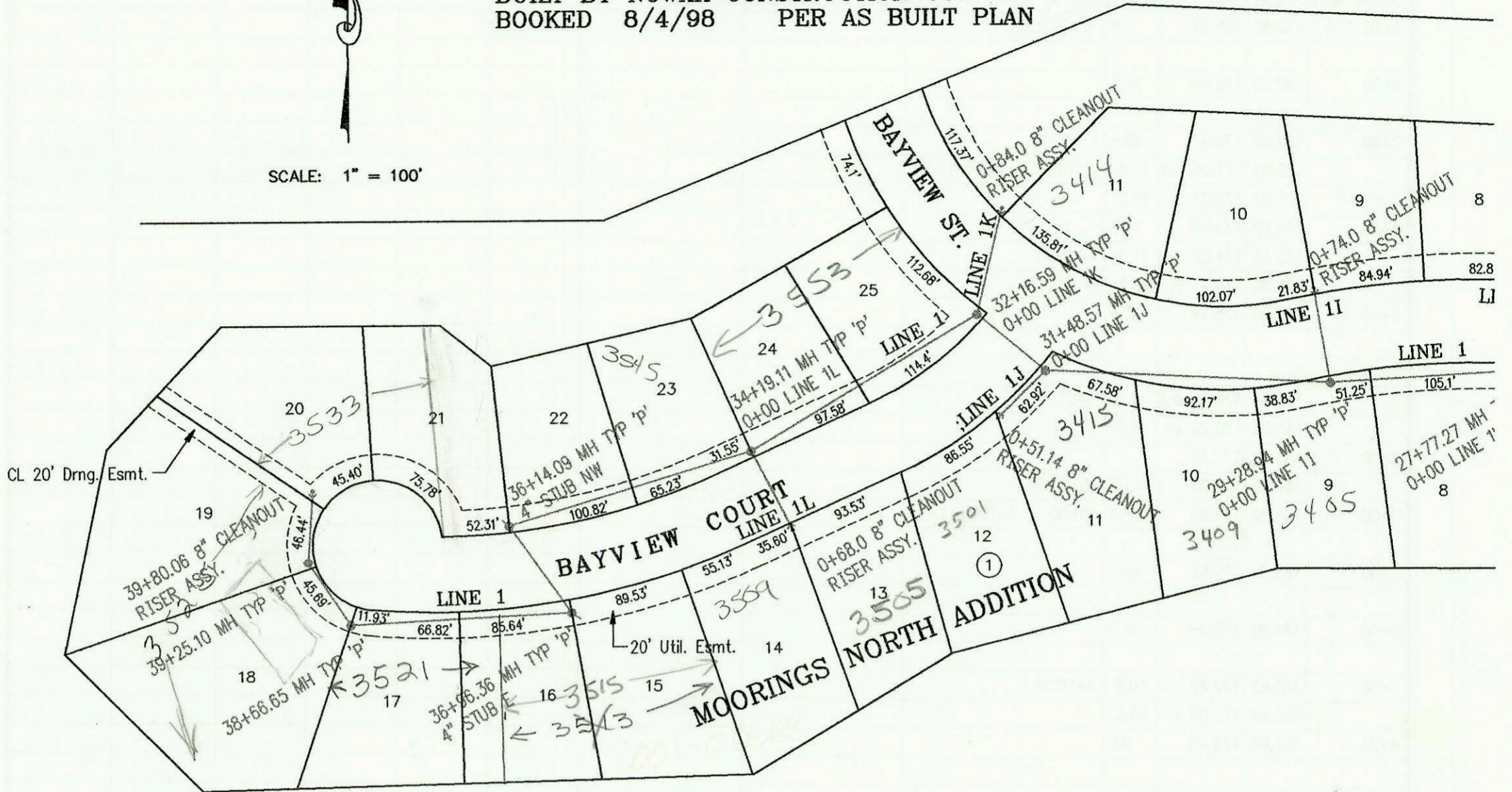


LATERAL 93, SANITARY SEWER NO. 23
PROJECT NO. 468-82777 (743310)
BUILT BY NOWAK CONSTRUCTION CO.
BOOKED 8/4/98 PER AS BUILT PLAN



SCALE: 1" = 100'



CONSTRUCTION RECORD					SERVICE RECORD							
STATION	ELEVATION		DEPTH	MANHOLE	4-INCH "Y" BRANCHES		No. of Permit		House Number		DATE OF PERMITS	
	GROUND	GRADE			North West	South East	North West	South East	North West	South East	North West	South East
L-1 CONT. LATERAL 93,	SANITARY SEWER NO. 23 (CONT. FROM P-28)											
33+00	146.10	138.80	7.3				2004-02237		3553 Bayview		12-19-04	
34+00	146.50	139.10	7.4									
	147.30	139.16	8.1	34+19.11 = 0+00 L-1L								
35+00	146.50	139.40	7.1		4" SCH 40 35+19.09		2000-02205		3545 Bayview		9-6-06	
36+00	146.50	139.70	6.8									
	147.10	139.74 out	7.4	36+14.09	4" STUB NW 140.40							
	147.10	139.84 in	7.3									
	147.30	140.09 out	7.2	36+96.36	4" STUB E 140.52		2001-00668		3515 W Bayview		3-24-01	
	147.30	140.19 in	7.1									
37+00												
38+00	146.20	140.50	5.7				2004-00638		3521 W Bayview		3-9-04	
	146.80	140.70 out	6.1	38+66.65								
	146.80	140.80 in	6.0									
39+00	146.00	140.90	5.1		4" SCH 40 39+19.11		2004-01159		3525 Bayview		3-23-00	
	146.60	140.98	5.6	39+25.1								
	146.40	141.12	5.3	39+80.06 Cleanout Riser w/ Si. wye			99-44907		3537 Bayview		3-15-99	
0+00 L-1A	144.20	133.78	10.4	0+00 = 14+53.8 L-1								
	144.70	134.21	10.5	0+64.0 Cleanout Riser w/ Db. wye								
0+00 L-1B	145.30	134.08	11.2	0+00 = 16+00.52 L-1								
	145.40	134.55	10.8	0+74.0 Cleanout Riser w/ Db. wye	4" SCH 40 0+71		2005-00881		3018 Bayview		5-13-05	
0+00 L-1C	146.40	134.81	11.6	0+00 = 18+82.9 L-1								
	146.40	135.15	11.3	0+84.0 Cleanout Riser w/ Db.wye			2005-02416		3102 Bayview		10-9-03	
0+00 L-1D	147.10	135.10	12.0	0+00 = 20+28.21 L-1								
	147.00	135.40	11.6	0+74.0 Cleanout Riser w/ Db. wye			2004-00951		3114 Bayview		4-8-04	
0+00 L-1E	148.00	135.54	12.5	0+00 = 22+45.79 L-1								
	147.10	135.88	11.2	0+84.0 Cleanout Riser w/ Db. wye								
0+00 L-1F	148.60	136.33	12.3	0+00 = 24+74.82 L-1								
	148.70	136.63	12.1	0+74.0 Cleanout Riser w/ Db. wye								
0+00 L-1G	148.20	136.79	11.4	0+00 = 26+29.76 L-1								
	148.40	137.09	11.3	0+74.0 Cleanout Riser w/ Db. wye								
0+00 L-1H	147.70	137.23	10.5	0+00 = 27+77.27 L-1								
	147.60	137.53	10.1	0+74.0 Cleanout Riser w/ Db. wye								
0+00 L-1I	147.00	137.59	9.4	0+00 = 29+28.94 L-1	4" SCH 40 29+16.9 Saddle		2001-00203		3405 W Bayview		1-30-01	
	147.00	137.99	9.0	0+74.0 Cleanout Riser w/ Db. wye	0+84 4" SCH 40		2000-00290		3410 Bayview		9-14-06	
0+00 L-1J	146.70	138.25	8.4	0+00 = 31+48.57 L-1	4" SCH 40 0+10		2000-00534		3415 W Bayview		2-29-00	
	146.70	138.55	8.1	0+51.14 Cleanout Riser w/ Db. wye			99-54227		3501 Bayview		3-19-99	
0+00 L-1K	146.40	138.55	7.8	0+00 = 32+16.59 L-1								
	145.80	138.89	6.9	0+84.0 Cleanout Riser w/ Db. wye	4" SCH 40 0+81.0		99-01526		3474 Bayview		12-23-99	
0+00 L-1L	147.30	139.26	8.0	0+00 = 34+19.11 L-1								
	147.30	139.53	7.8	0+68.0 Cleanout Riser w/ Db. wye	4" SCH 40 0+68.8		99-89397	1999-00757	3509 Bayview	3505 Bayview	4-29-99	9-23-99
0+00 L-2	141.90	130.79	11.1	0+00 = 0+05.1 L-1	4" SCH 40 0+12		99-101817		3407 Sandkey		5-18-99	
1+00	141.70	131.19	10.5									
2+00	142.00	131.59	10.4									
	143.00	131.87	11.1	2+70.0			2003-01335		2912 Keywest		5-19-03	
3+00	142.30	131.99	10.3									
					4" SCH 40 3+48.6		2000-01455		3004 Keywest		6-19-00	
4+00	142.60	132.39	10.2									
							98-18467		3008 Keywest		7-16-98	
5+00	142.90	132.79	10.1									
	143.70	132.90	10.8	5+27.66	4" STUB NW 133.23		2000-01587		3013 Keywest		7-11-00	
0+00 L-3	145.20	131.59	13.6	0+00 = 2+91.89 L-1								
1+00	144.90	131.83	13.1									
	145.30	131.87	13.4	1+11.14								
2+00	144.60	132.23	12.4									
	144.90	132.31 out	12.6	2+20.46 = 0+00 L-3A								
	144.90	132.41 in	12.5									
	145.00	132.72 out	12.3	2+97.30	← 4" STUB NE 133.15		2005-02291		4949 W Sandkey			
	145.00	132.82 in	12.2				2003-02629		4945 Sandkey		10-10-03	
3+00												
4+00	144.20	133.23	11.0									
							2003-0596		4941 Sandkey		4-4-03	
5+00	143.90	133.63	10.3									
	144.10	133.83	10.3	5+49.06			2001-00123		4937 Sandkey		1-14-02	