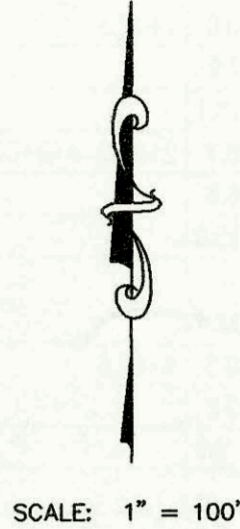
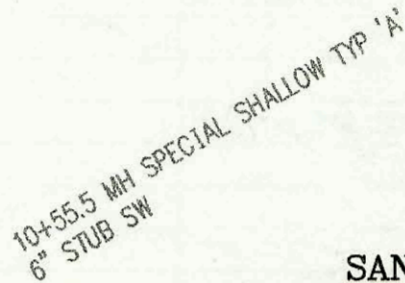


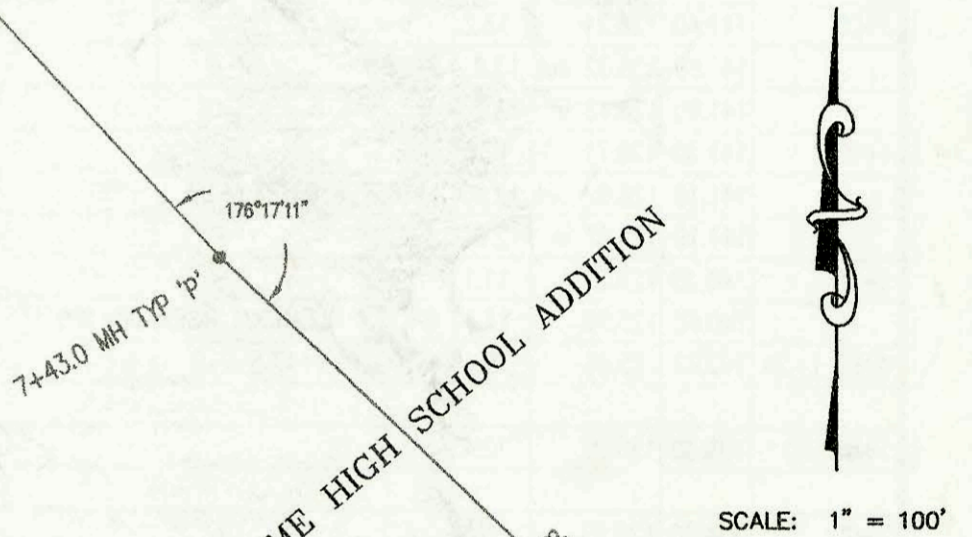
SANITARY SEWER IMPROVEMENTS FOR  
 LOT 1, BLK 1, CARRIAGE HOUSE PLAZA 4TH ADDITION  
 PROJECT NO. 822PPS  
 BUILT BY UTILITY CONTRACTORS INC.  
 BOOKED 10/19/98 PER AS BUILT PLAN



SANITARY SEWER EXTENSION FOR AREA  
 N. OF 33RD ST. NO.  
 AND APROX. 650 FT. W. OF HILLSIDE  
 PROJECT NO. 210PPS  
 BUILT BY L. A. KNEBLER CONST. CO.  
 BOOKED 10/19/98 PER AS BUILT PLAN



SANITARY SEWER IMPROVEMENTS FOR  
 BISHOP CARROLL HIGH SCHOOL  
 PROJECT NO. 835PPS  
 BUILT BY DULING CONSTRUCTION CO.  
 BOOKED 10/19/98 PER AS BUILT PLAN

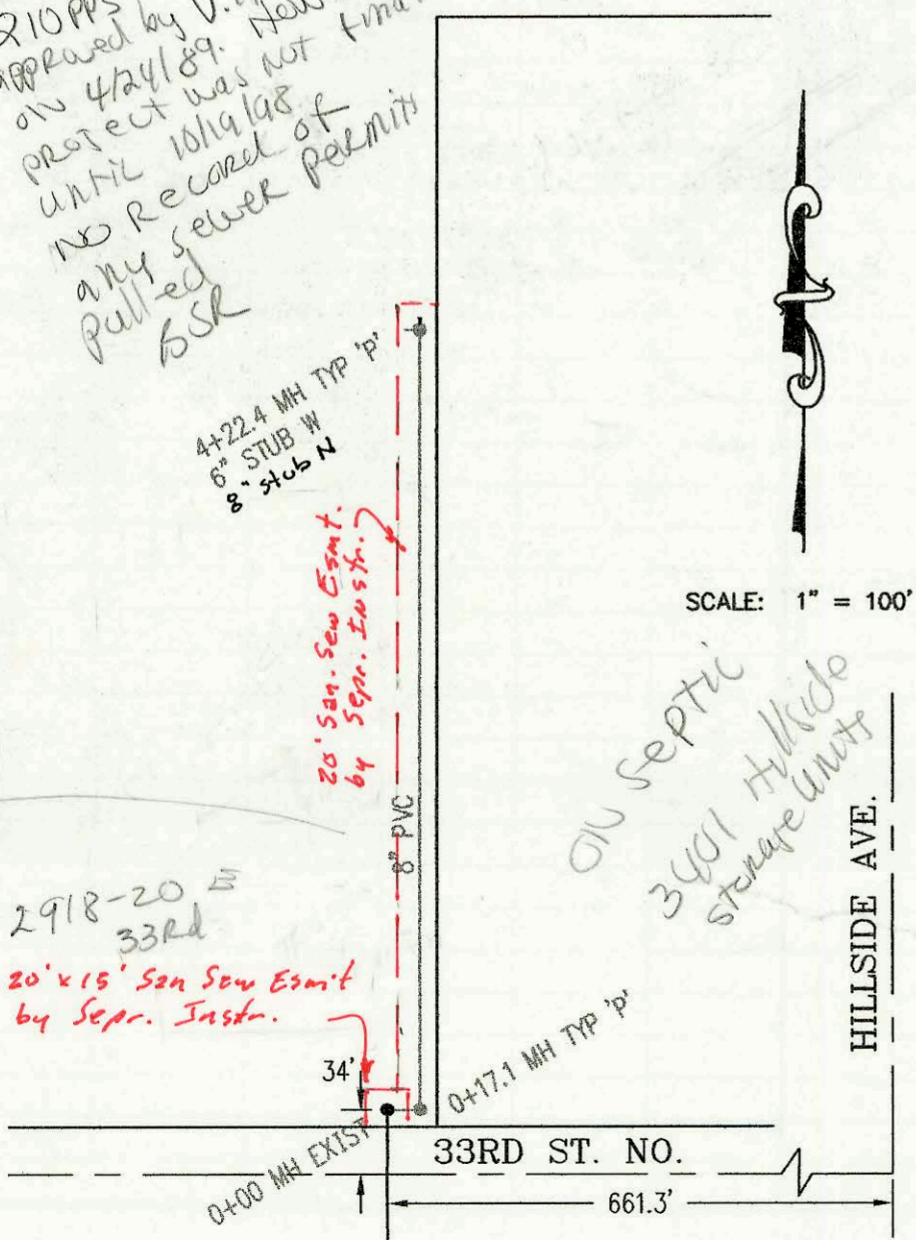


*210PPS approved by V. Huang on 4/24/89. However project was not finalized until 10/19/98. No record of any sewer permit pulled. BSK*

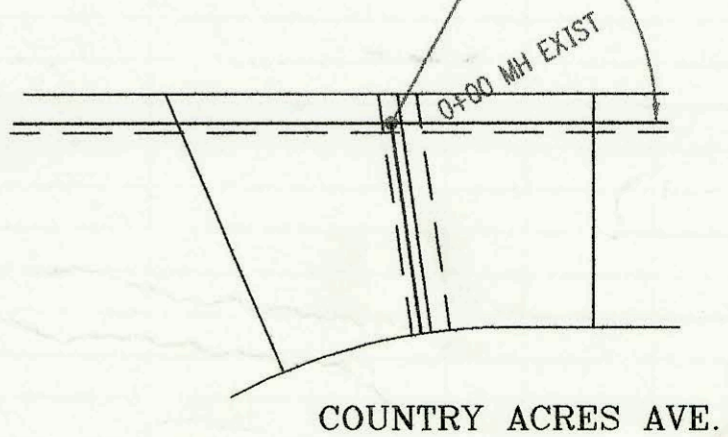
*Will require Main FWT See d bid for Main from P. Bryant*

*2918-20 E 33rd 20' x 15' San Sew Esmt by Sepr. Instr.*

*on septic 3401 Hillside storage unit*



SCALE: 1" = 100'



COUNTRY ACRES AVE.

CONSTRUCTION RECORD						SERVICE RECORD						
STATION	ELEVATION		DEPTH	MANHOLE	4-INCH "Y" BRANCHES		No. of Permit		House Number		DATE OF PERMITS	
	GROUND	GRADE			North West	South East	North West	South East	North West	South East	North West	South East
SANITARY SEWER IMP. FOR CARRIAGE HOUSE PLAZA 4TH ADDITION (822 PPS)												
0+00	143.85	131.96	11.9	0+00		4" stub S.		98-238627	8444 McCormick		12-17-98	
1+00	143.80	132.25	11.6									
	139.20	132.49	6.7	1+80.82 EXIST								
SANITARY SEWER IMP. FOR BISHOP CARROLL HIGH SCHOOL (835PPS)												
0+00	150.00	141.55	8.4	0+00 EXIST								
1+00	149.30	141.73	7.6									
2+00	149.20	141.90	7.3									
3+00	149.90	142.08	7.8									
	150.87	142.20	8.7	3+71.2								
	150.87	142.31	8.6									
4+00	150.50	142.38	8.1									
5+00	149.30	142.67	6.6									
6+00	148.80	142.96	5.8									
7+00	148.40	143.24	5.2									
	147.88	143.36	4.5	7+43.0								
8+00	148.40	143.52	4.9									
9+00	148.50	143.79	4.7									
10+00	148.00	144.06	3.9									
	147.35	144.21	3.1	10+55.5		6" STUB SW 144.24						
SANITARY SEWER IMP. FOR AREA N. OF 33RD ST. NO. AND 650' W. OF HILLSIDE (210PPS)												
0+00	162.33	150.36	12.0	0+00 EXIST								
	162.40	150.16	12.2	0+17.1								
1+00	162.5	150.36	12.1									
2+00	163.30	150.63	12.7									
3+00	164.40	150.94	13.5									
4+00	164.10	151.23	12.9									
	164.00	151.30	12.7	4+22.4		8" STUB N 151.44 6" STUB W						