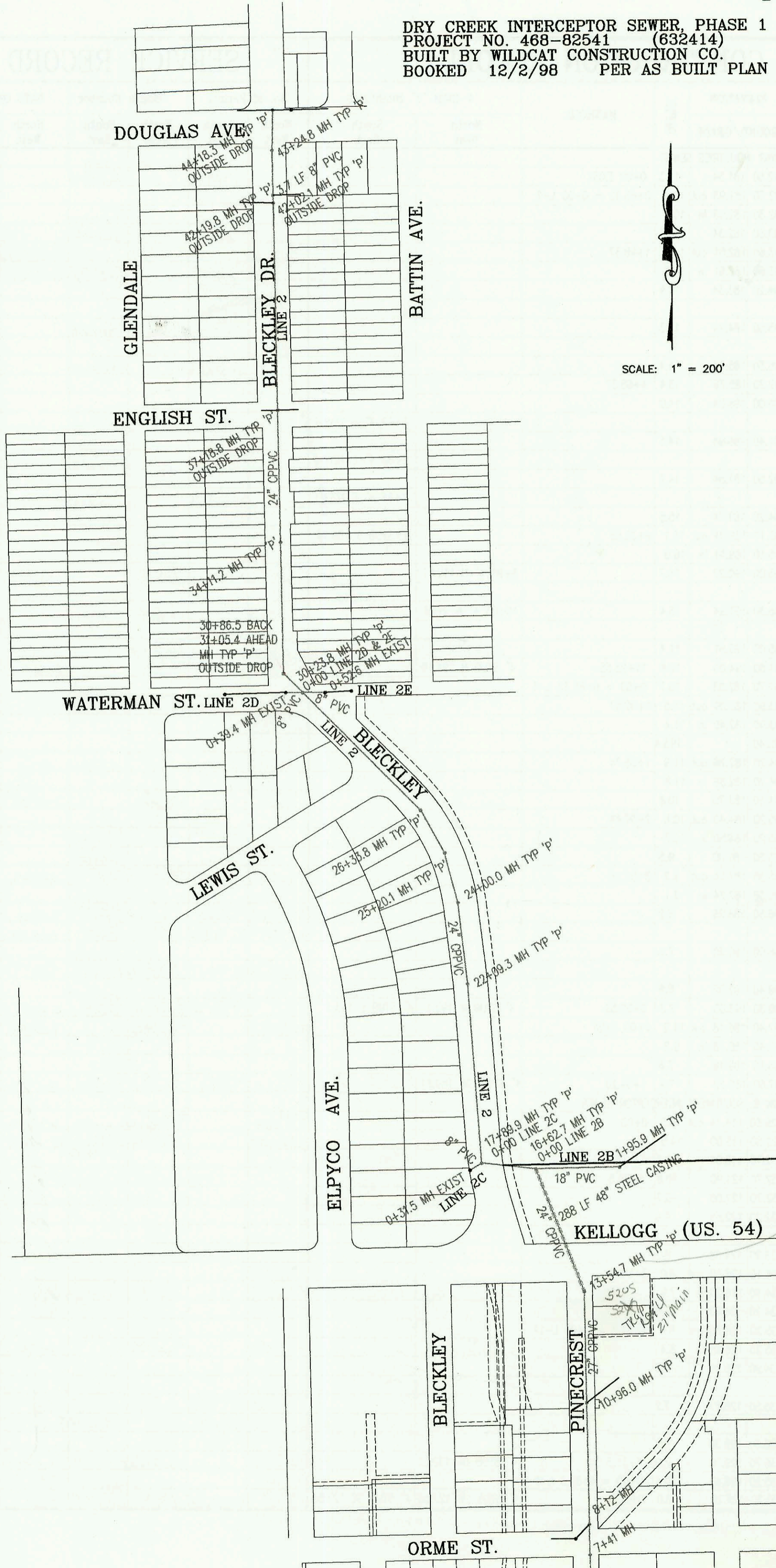


DRY CREEK INTERCEPTOR SEWER, PHASE 1
PROJECT NO. 468-82541 (632414)
BUILT BY WILDCAT CONSTRUCTION CO.
BOOKED 12/2/98 PER AS BUILT PLAN



SCALE: 1" = 200'

Acknowledgement
 dtd 3-15-05
 by Pres. of
 Wichita Inn
 stating he knows
 4" line for new
 Retail Bldg
 ties back to
 East 6" pipe
 line at 91st
 45' from
 MH 137547.
 The 6" taps
 into this MH.
 BK
 3/16/05

CONSTRUCTION RECORD					SERVICE RECORD							
STATION	ELEVATION		DEPTH	MANHOLE	4-INCH "Y" BRANCHES		No. of Permit		House Number		DATE OF PERMITS	
	GROUND	GRADE			North West	South East	North West	South East	North West	South East	North West	South East
DRY CREEK	INTERCEPTOR SEWER,		PHASE 1 (CONT. FROM P-44)									
7+00	149.60	134.44	15.2									
	149.60	134.54	15.1	7+41								
8+00												
	150.20	134.68	15.5	8+12								
9+00	150.80	134.86	15.9									
10+00	151.50	135.06	16.4									
	152.56	135.25	17.3	10+96.0								
11+00												
12+00	153.00	135.46	17.5									
13+00	153.00	135.66	17.3									
	152.76	135.80	17.0	13+54.7	MHTAP	4" sch 40 pipe back to EXIST 6" SDR 35 TAP TO MHT at approx 45' from MHT	2005		5205 KENNEDY		3-16-05	
14+00	152.70	135.92	16.8									
15+00	153.40	136.32	17.1									
16+00	153.50	136.72	16.8									
	154.66	136.97 out	17.7	16+62.7 = 0+00 L-2B								
	154.66	137.07 in	17.6									
17+00	154.10	137.21	16.9									
	150.31	137.52	12.8	17+89.9								
18+00	150.70	137.56	13.1									
19+00	150.70	137.91	12.8									
20+00	151.20	138.26	12.9									
21+00	151.50	138.61	12.9									
22+00	152.00	138.95	13.1									
	152.11	139.04	13.1	22+09.3								
23+00	152.40	139.30	13.1									
24+00	152.13	139.66	12.5	24+00.0								
25+00	153.50	140.00	13.5									
	153.78	140.08	13.7	25+20.1								
26+00	154.30	140.35	14.0									
	154.18	140.47	13.7	26+33.8								
27+00	154.00	140.70	13.3									
28+00	154.60	141.05	13.6									
29+00	154.50	141.40	13.1									
30+00	154.30	141.75	12.6									
	153.93	141.83	12.1	30+23.8 = 0+00 L-2D & 2E								
	154.79	142.12	12.7	30+86.5 BK = 31+05.4 AHD								
32+00	154.60	142.45	12.2									
33+00	155.00	142.80	12.2									
34+00	155.40	143.15	12.3									
	154.79	143.19	11.6	34+11.2								
35+00	155.80	143.50	12.3									
36+00	156.30	143.85	12.4									
37+00	156.70	144.20	12.5									
	156.85	144.26	12.6	37+18.8								
38+00	157.10	144.55	12.6									
39+00	157.50	144.90	12.6									
40+00	157.90	145.25	12.6									
41+00	158.40	145.60	12.8									
42+00												
	158.84	145.96	12.9	42+02.1								
	158.84	146.02	12.8	42+19.8								
43+00	159.70	146.30	13.4									
	160.67	146.39	14.3	43+24.8								
44+00	162.50	146.65	15.9									
	162.25	146.71	15.5	44+18.3								
0+00 L-2B	154.66	137.77	16.9	0+00 = 16+62.7 L-2								
1+00	155.50	138.77	16.7									
	155.64	139.73	15.9	1+95.9								
0+00 L-2C	150.31	145.31	5.0	0+00 = 17+92.2 L-2								
	152.09	145.62	6.5	0+31.5 EXIST								
0+00 L-2D	153.93	147.64	6.3	0+00 = 30+23.8 L-2								
	154.60	148.43	6.2	0+39.4								
0+00 L-2E	153.93	146.90	7.0	0+00 = 30+23.8 L-2								
	153.40	147.96	5.4	0+52.6								
0+00 L-3	171.70	157.03	14.7	0+00 = 89+31.0 L-1	6" SCH 40 0+87.6		2000- 01854		404 400 S. EDGE MOOR	BLD 300	8-18-00	
1+00	170.00	157.43	12.6				2-307 01174		408 EDGE MOOR	400 BLD	8-17-02	
2+00	168.80	157.83	11.0				99-45827		404 400 S. EDGE MOOR	400 BLD	8-17-99	
	167.20	158.20	9.0	2+92.0	MHTAP 4" SCH 40		2001- 00931		404 400 S. EDGE MOOR	BLD 100	4-18-01	