

P48

LATERAL 15, COWSKIN INTERCEPTOR SEWER
PROJECT NO. 468-82806 (743492)
BUILT BY MIES CONSTRUCTION CO.
BOOKED 12/4/98 PER PLAN

AUBURN HILLS 5TH ADDITION

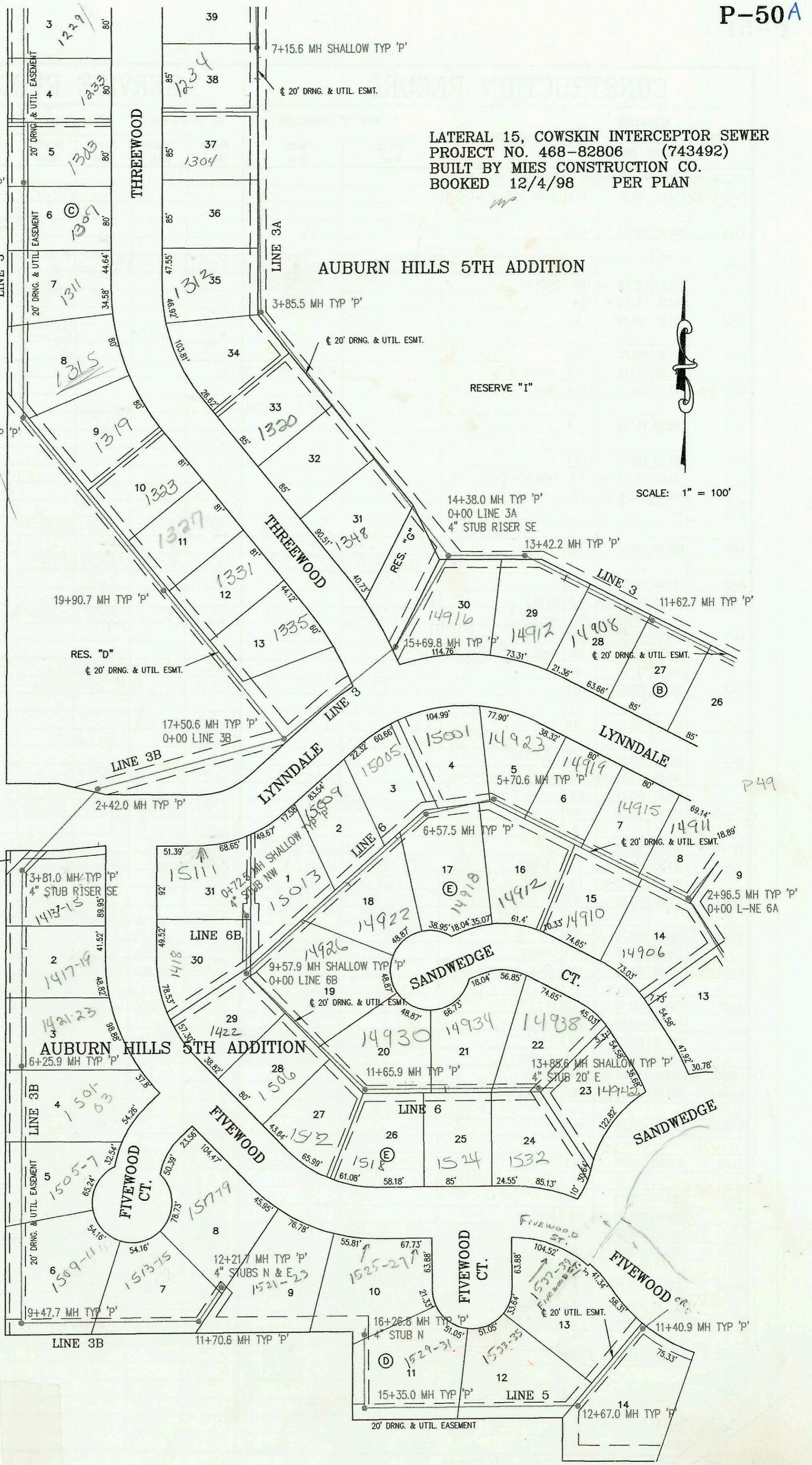


SCALE: 1" = 100'

25+63.7 MH TYP 'P'

22+69.9 MH TYP 'P'

151ST STREET WEST



AUBURN HILLS 5TH ADDITION

P49

LINE 3B

11+70.6 MH TYP 'P'

16+26.8 MH TYP 'P'

FIVEWOOD CT.

FIVEWOOD ST.

FIVEWOOD CR.

11+40.9 MH TYP 'P'

12+67.0 MH TYP 'P'

20' DRNG. & UTIL EASEMENT

LINE 5

20' UTIL. ESMT.

15+35.0 MH TYP 'P'

12+21.7 MH TYP 'P'

4" STUBS N & E

16+26.8 MH TYP 'P'

4" STUB N

11+40.9 MH TYP 'P'

15+35.0 MH TYP 'P'

12+21.7 MH TYP 'P'

4" STUBS N & E

16+26.8 MH TYP 'P'

4" STUB N

11+40.9 MH TYP 'P'

15+35.0 MH TYP 'P'

12+21.7 MH TYP 'P'

4" STUBS N & E

16+26.8 MH TYP 'P'

4" STUB N

11+40.9 MH TYP 'P'

15+35.0 MH TYP 'P'

12+21.7 MH TYP 'P'

4" STUBS N & E

16+26.8 MH TYP 'P'

4" STUB N

11+40.9 MH TYP 'P'

15+35.0 MH TYP 'P'

12+21.7 MH TYP 'P'

4" STUBS N & E

16+26.8 MH TYP 'P'

4" STUB N

11+40.9 MH TYP 'P'

15+35.0 MH TYP 'P'

12+21.7 MH TYP 'P'

4" STUBS N & E

16+26.8 MH TYP 'P'

4" STUB N

11+40.9 MH TYP 'P'

15+35.0 MH TYP 'P'

12+21.7 MH TYP 'P'

4" STUBS N & E

16+26.8 MH TYP 'P'

4" STUB N

11+40.9 MH TYP 'P'

15+35.0 MH TYP 'P'

12+21.7 MH TYP 'P'

4" STUBS N & E

16+26.8 MH TYP 'P'

4" STUB N

11+40.9 MH TYP 'P'

15+35.0 MH TYP 'P'

12+21.7 MH TYP 'P'

4" STUBS N & E

16+26.8 MH TYP 'P'

4" STUB N

11+40.9 MH TYP 'P'

15+35.0 MH TYP 'P'

12+21.7 MH TYP 'P'

4" STUBS N & E

16+26.8 MH TYP 'P'

4" STUB N

11+40.9 MH TYP 'P'

15+35.0 MH TYP 'P'

12+21.7 MH TYP 'P'

4" STUBS N & E

16+26.8 MH TYP 'P'

4" STUB N

11+40.9 MH TYP 'P'

15+35.0 MH TYP 'P'

12+21.7 MH TYP 'P'

4" STUBS N & E

16+26.8 MH TYP 'P'

4" STUB N

11+40.9 MH TYP 'P'

15+35.0 MH TYP 'P'

12+21.7 MH TYP 'P'

4" STUBS N & E

16+26.8 MH TYP 'P'

4" STUB N

11+40.9 MH TYP 'P'

15+35.0 MH TYP 'P'

12+21.7 MH TYP 'P'

4" STUBS N & E

16+26.8 MH TYP 'P'

4" STUB N

11+40.9 MH TYP 'P'

15+35.0 MH TYP 'P'

12+21.7 MH TYP 'P'

4" STUBS N & E

16+26.8 MH TYP 'P'

4" STUB N

11+40.9 MH TYP 'P'

15+35.0 MH TYP 'P'

12+21.7 MH TYP 'P'

4" STUBS N & E

16+26.8 MH TYP 'P'

4" STUB N

11+40.9 MH TYP 'P'

15+35.0 MH TYP 'P'

12+21.7 MH TYP 'P'

4" STUBS N & E

16+26.8 MH TYP 'P'

4" STUB N

11+40.9 MH TYP 'P'

15+35.0 MH TYP 'P'

12+21.7 MH TYP 'P'

4" STUBS N & E

16+26.8 MH TYP 'P'

4" STUB N

11+40.9 MH TYP 'P'

15+35.0 MH TYP 'P'

12+21.7 MH TYP 'P'

4" STUBS N & E

16+26.8 MH TYP 'P'

4" STUB N

11+40.9 MH TYP 'P'

15+35.0 MH TYP 'P'

12+21.7 MH TYP 'P'

4" STUBS N & E

16+26.8 MH TYP 'P'

4" STUB N

11+40.9 MH TYP 'P'

15+35.0 MH TYP 'P'

12+21.7 MH TYP 'P'

4" STUBS N & E

16+26.8 MH TYP 'P'

4" STUB N

11+40.9 MH TYP 'P'

15+35.0 MH TYP 'P'

12+21.7 MH TYP 'P'

4" STUBS N & E

16+26.8 MH TYP 'P'

4" STUB N

11+40.9 MH TYP 'P'

CONSTRUCTION RECORD					SERVICE RECORD							
STATION	ELEVATION		DEPTH	MANHOLE	4-INCH "Y" BRANCHES		No. of Permit		House Number		DATE OF PERMITS	
	GROUND	GRADE			North West	South East	North West	South East	North West	South East	North West	South East
LATERAL 15, COWSKIN INTERCEPTOR SEWER (CONT. FROM P-49)												
11+00	202.90	193.16	9.7									
	203.80	193.45 out	10.4	11+70.6			308 049-00097		153-15 FIREWOOD		6-3-99	
	203.80	193.55 in	10.3									
12+00	203.20	193.69	9.5									
	203.40	193.80	9.6	12+21.7	4" SCH 40 4" STUB N 194.15	4" SCH 40 4" STUB E 194.15	99-00085	2001- 00273	1517-19 FIREWOOD	1521-23 FIREWOOD	10-26-99	2-7-01
0+00 L-4	200.90	190.50	10.4	0+00 = 4+50 L-3								
	201.70	190.80	10.9	0+56.4	0+22 4" W 10V15H		2005- 00432		1412 FIREWOOD		7-5-05	
1+00	201.60	191.13	10.5									
	202.30	191.30 out	11.0	1+32.7	1+14.7 4" SCH 40		2005- 01585		1416 FIREWOOD		6-28-05	
	202.30	191.40 in	10.9		1+77.7 4" SCH 40		2005- 00738		1420 FIREWOOD		4-4-05	
2+00	201.60	191.71	9.9									
3+00	201.10	192.16	8.9									
	200.80	192.60 out	8.2	3+97.1 = 0+00 L-4A								
	200.80	192.70 in	8.1									
4+00												
5+00	199.30	193.31	6.0									
	199.20	193.50	5.7	5+32.8	4" SW 38H 193.85							
0+00 L-4A	200.80	192.70	8.1	0+00 = 3+97.1 L-4								
	201.70	195.65	6.1	0+74.8		4" STUB SW 196.00	2004- 01060		14706 Sandwedge		4-15-04	
0+00 L-5	197.20	185.20	12.0	0+00 = 7+59.0 L-3								
						0+35 4" E 7V9H						
1+00												
	198.60	187.50 out	11.1	1+05.8	4" W 7V17H 4" SCH 40		2004- 02243		14814 W Lynndale		9-8-06	
	198.60	187.60 in	11.0		1+30 4" W 7V15H 4" SCH 40	1+40 4" E 7V5H	99-00083	2001- 00033	14810 Lynndale	1415 Fawnwood	9-17-99	1-8-01
2+00	199.50	187.89	11.6		2+26 4" W 8V13H 4" SCH 40	2+36 4" E 8V7H	2001- 00202	2005- 02212	14806 W Lynndale	1419 Fawnwood	11-30-01	9-9-05
	201.00	188.15 out	12.9	2+83.2								
	201.00	188.25 in	12.8									
3+00	200.80	188.30	12.5			3+30 4" E 9V9H 4" SCH 40		99-01229		1483 Fawnwood		11-18-99
					3+42 4" W 9V11H		2001- 03214		14802 Lynndale		11-27-01	
4+00	202.60	188.60	14.0									
5+00	203.80	188.91	14.9					2002- 01535		14713 Threewood		5-30-02
	199.80	189.20 out	10.6	5+96.4 = 0+00 L-5A & L-5B								
	199.80	189.30 in	10.5									
6+00							2000- 00034		14805 sandwedge		1-7-2000	
7+00	200.40	189.72	10.7			7+35 4" S 6V15H	2001- 02357		14809 sandwedge		9-20-01	
8+00	199.20	190.12	9.1			8+18 4" S 5V15H	2001- 02048		14815 sandwedge		8-16-01	
9+00	198.70	190.53	8.2				2000- 00169		14905 sandwedge		1-20-2000	
	200.00	190.75 out	9.3	9+54.8			2007- 01313		14911 sandwedge		5-13-02	
	200.00	190.85 in	9.1									
10+00	200.40	191.31	9.1		4" SCH 40 10+32.4		2006- 01626		14917 W sandwedge		7-19-06	
	202.10	191.31 out	10.8	10+69.4								
	202.10	191.41 in	10.7									
11+00	201.30	191.03	10.3									
	202.00	191.70 out	10.3	11+40.9								
	202.00	191.80 in	10.2		4" SCH 40 DL 11+88 TAP		2001- 00418	2007- 00069	1537-39 FIREWOOD	1541-42 FIREWOOD	3-28-01	1-8-02
12+00	201.10	191.91	9.2									
	200.30	192.31 out	8.0	12+67.0								
	200.30	192.41 in	7.9		4" SCH 40 DL 13+44.6 TAP		2001- 00679		1533-35 FIREWOOD		3-28-01	
13+00	200.10	192.04	8.1									
14+00	200.80	192.95	7.9									
15+00	201.60	193.36	8.2									
	202.30	193.50 out	8.8	15+35.0								
	202.30	193.60 in	8.7									
16+00	202.10	193.88	8.2			4" SCH 40 DL 15+83.8 TAP		2001- 00359		1529-31 FIREWOOD		2-20-01
	202.50	194.00	8.5	16+26.8	4" SCH 40 4" STUB N 194.35		2001- 00521		1525-27 FIREWOOD		3-11-01	
0+00 L-5A	199.80	189.30	10.5	0+00 = 5+96.4 L-5								
	199.50	190.50 out	9.0	0+31.9								
	199.50	190.60 in	8.9			0+68 4" SW 5V15H						
1+00	200.80	191.83	9.0									
2+00												
	199.60	193.65	6.0	2+01.4	4" STUB NE 194.00	4" STUB SW 15H						