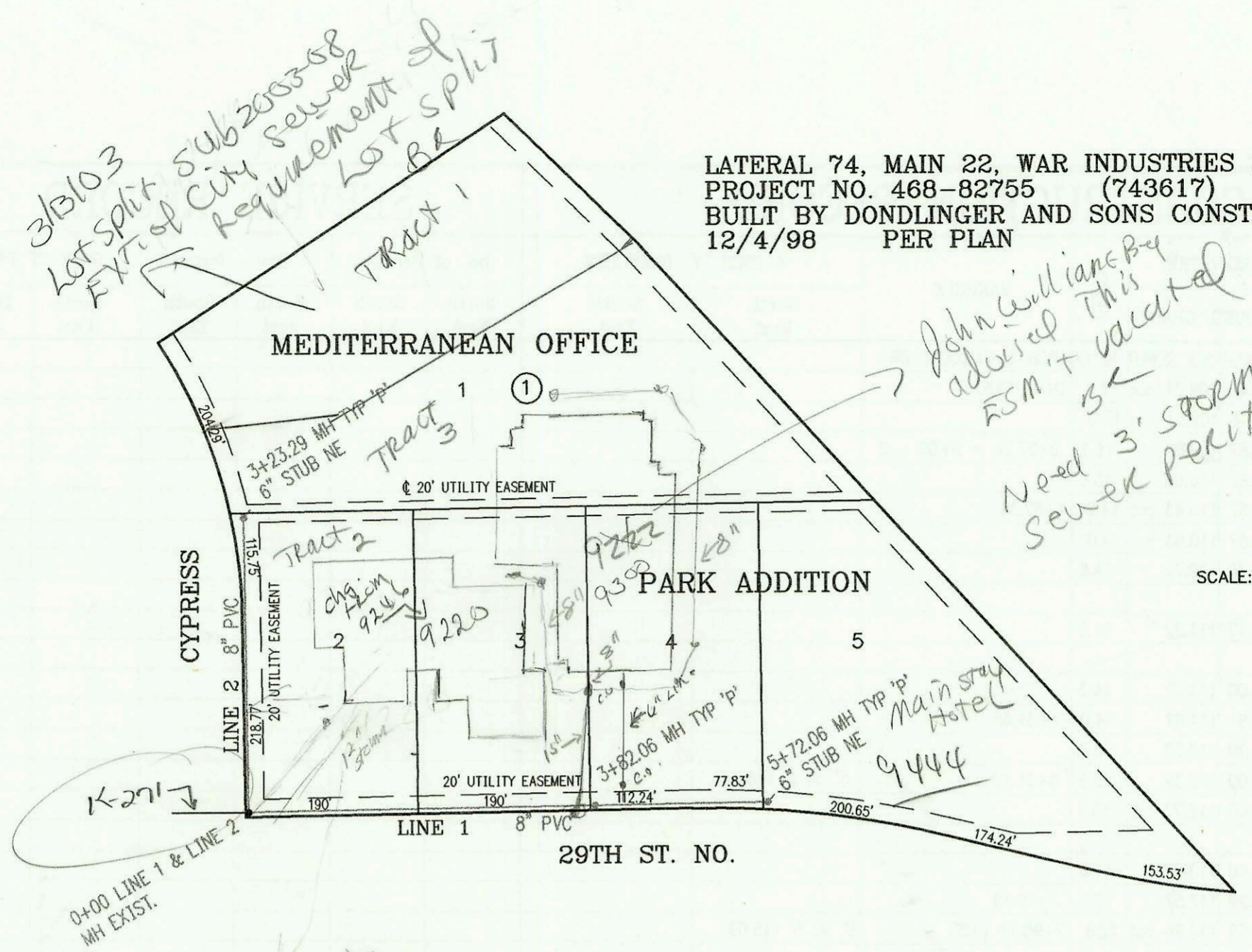


LATERAL 74, MAIN 22, WAR INDUSTRIES SEWER  
PROJECT NO. 468-82755 (743617)  
BUILT BY DONDLINGER AND SONS CONSTRUCTION CO.  
12/4/98 PER PLAN



3/BLO3  
Lot split  
EXT. of City  
sewer  
requirement of  
Lot split  
BE

John Williams By  
advised This  
FSM + vacated  
Need 3' storm  
Sewer permits

1-271  
0+00 LINE 1 & LINE 2  
MH EXIST.

New Bldg  
Bldg Storm  
Sewer -  
Reference Memo  
From Mike  
Lindabak  
on Sewer  
permit

Main Stay  
Hotel  
9444

SCALE: 1" = 150'

CONSTRUCTION RECORD					SERVICE RECORD								
STATION	ELEVATION		DEPTH	MANHOLE	4-INCH "Y" BRANCHES		No. of Permit		House Number		DATE OF PERMITS		
	GROUND	GRADE			North West	South East	North West	South East	North West	South East	North West	South East	
LATERAL 15, COWSKIN INTERCEPTOR SEWER (CONT. FROM P-50)													
0+00 L-5B	199.80	189.30	10.5	0+00 = 5+96.4 L-5									
1+00	202.90	190.62	12.3										
2+00													
	202.50	192.00 out	10.5	2+04.9		4" STUB SE 192.35							
	202.50	192.10 in	10.4										
3+00	201.80	192.49	9.3										
								2002-00286		1553-ES Fivewood		1-31-02	
4+00	201.30	192.89	8.4										
	201.50	193.15	8.4	4+62.9		4" STUB SW 193.50							
0+00 L-6	197.20	185.75	11.4	0+00 = 8+98.3 L-3									
						0+84 4" E 9V16H							
1+00	199.50	187.25	12.3										
2+00	198.80	188.72	10.1										
	198.00	190.15 out	7.9	2+96.5 = 0+00 L-6A									
	198.00	190.25 in	7.8					2000-01608		14911 Lyndale		4-25-00	
3+00													
								2000-01620	2000-02794	14915 Lyndale	14910 Sandwedge	7-13-00	12-28-00
4+00	198.70	190.67	8.0										
								2000-00075	99-01399	14919 Lyndale	14912 Sandwedge	11-20-00	12-6-99
5+00	199.60	191.07	8.5										
	200.70	191.35 out	9.3	5+70.6									
	200.70	191.45 in	9.3					2000-00026	2000-00116	15001 Lyndale	14918 Sandwedge	1-6-2000	1-14-2000
6+00	200.10	191.57	8.5										
	200.30	191.80 out	8.5	6+57.5									
	200.30	191.90	8.4					2001-01789		15005 Lyndale		7-18-01	
7+00	200.60	192.07	8.5										
								99-01400	2001-00085	14919 Lyndale	14922 Sandwedge	1-2-6-99	1-12-01
8+00	200.50	192.47	8.0										
								2000-00028		15013 Lyndale		1-7-2000	
9+00	200.70	192.88	7.8										
	199.80	193.11 out	6.7	9+57.9 = 0+00 L-6B									
	199.80	193.21 in	6.6					2002-00366		1477 Fivewood		3-21-02	
10+00	199.80	193.38	6.4										
								2005-00356	2005-02991	1506 Fivewood	14926 Sandwedge	2-17-04	11-26-01
11+00	200.60	193.78	6.8										
								2000-01396		1512 S. Fivewood		7-18-00	
	201.50	194.05 out	7.4	11+65.9				2000-01142	2000-01753	14930 Sandwedge	1518 S. Fivewood	5-8-00	7-18-00
	201.50	194.15 in	7.4					2000-01799		14934 Sandwedge		8-9-00	
12+00	200.80	194.29	6.5										
								2000-00470		14938 Sandwedge		2-18-00	
13+00	199.80	194.70	5.1										
	199.30	195.05	4.3	13+85.6		4" STUB E 20H 195.40		2000-02135		14942 W Sandwedge		9-27-00	
0+00 L-6A	198.00	190.25	7.8	0+00 = 2+96.5 L-6				2002-01130	2001-01788	14907 Lyndale	14906 Sandwedge	4-19-02	7-18-01
1+00	199.10	192.10	7.0										
	199.70	192.60 out	7.1	1+24.8				2002-01129	2000-01619	14903 Lyndale	14905 N Sandwedge	4-19-02	7-13-00
	199.70	192.70 in	7.0										
	200.30	193.00	7.3	1+96.6		4" STUB SE 192.35		2000-01618		14822 W Sandwedge		7-13-00	
								2001-00975		14816 W Sandwedge		4-19-01	
LATERAL 74, MAIN 22, WAR INDUSTRIES SEWER													
0+00 L-1	223.69	214.96	8.7	0+00 EXIST									
1+00	224.60	215.36	9.2										
2+00	225.00	215.76	9.2										
3+00	225.10	216.16	8.9										
	225.85	216.49 out	9.4	3+82.06									
	225.85	216.69 in	9.2					2002-00689		9200 Fivewood		3-20-03	
4+00	225.50	216.76	8.7										
5+00	225.50	217.16	8.3										
	224.76	217.45	7.3	5+72.06				78-15333-7		9444 Lyndale		8-19-98	
								98-28147-1		9444 Lyndale		8-19-98	
0+00 L-2	223.69	214.96	8.7	0+00 EXIST									
1+00	225.20	215.36	9.8										
2+00	225.60	215.76	9.8										
3+00	226.40	216.16	10.2										
	226.95	216.25	10.7	3+23.29		6" STUB NE 216.58							

Line 6B 0+00 199.80 193.21 6.6 0+00 = 9+57.9 L6 4" SCH40 4" SCH40 DL 1999- 2000- 15111 W 1418  
 201.30 195.00 6.3 0+72.5 4" stub NW 195.35 00918 02255 LYNDALE Fivewood 10-15-99 10-16-00