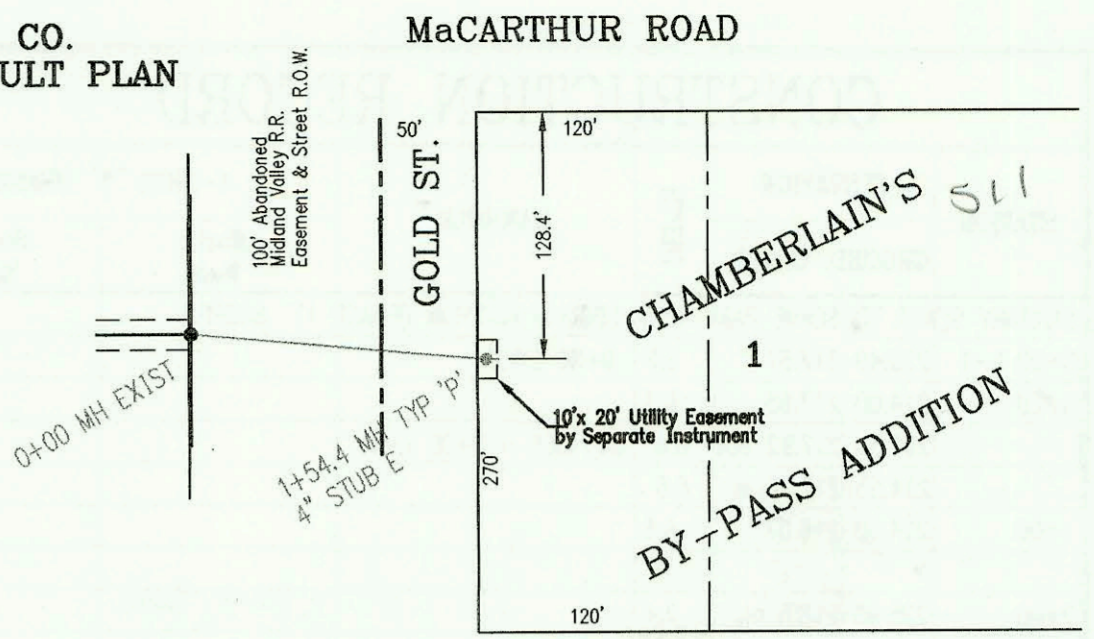


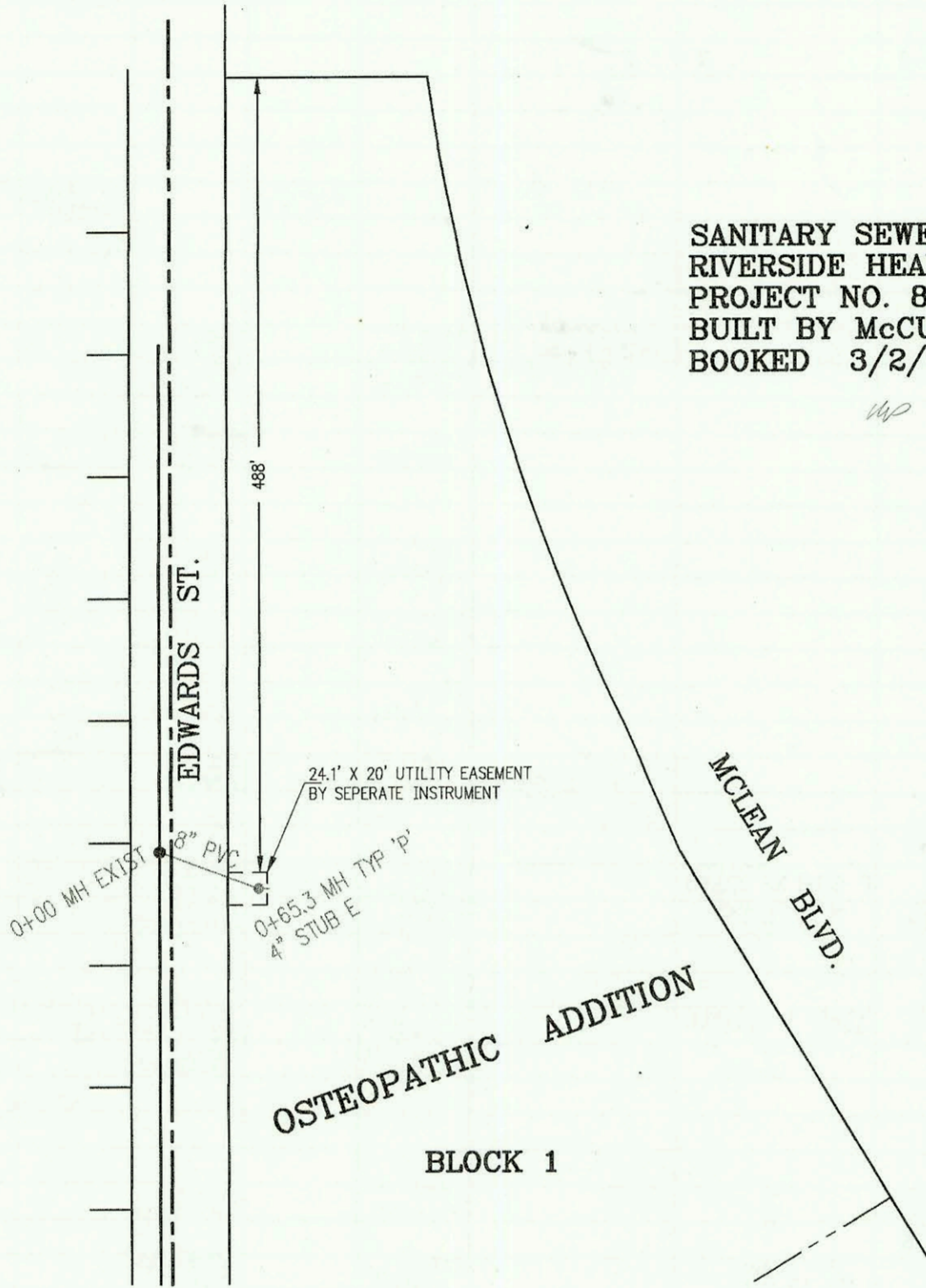
SANITARY SEWER TO SERVE  
 LOT 1, CHAMBERLAIN'S BY-PASS ADDITION  
 PROJECT NO. 847PPS  
 BUILT BY NOWAK CONSTRUCTION CO.  
 BOOKED 3/2/99 PER AS BIULT PLAN



SCALE: 1" = 100'

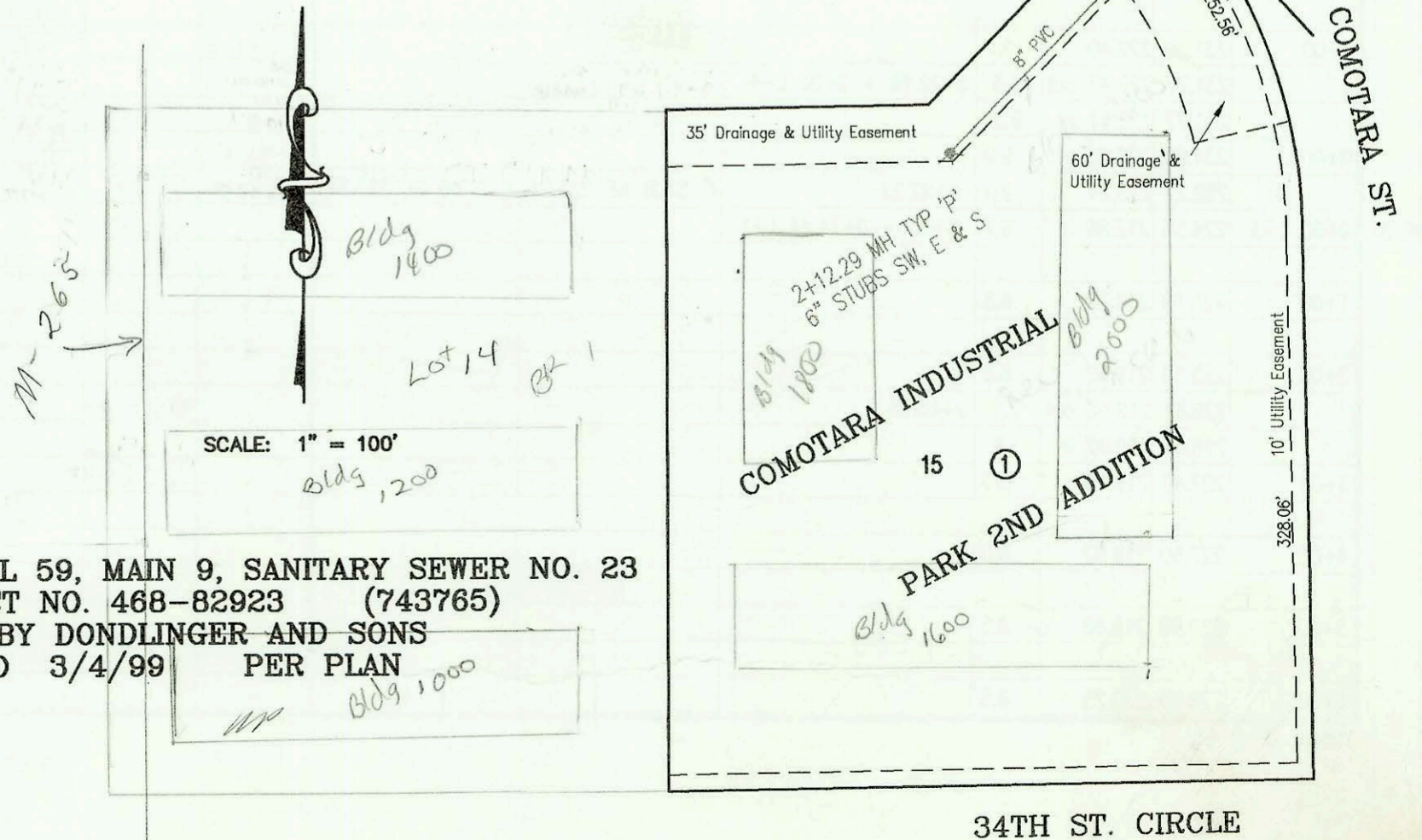


SANITARY SEWER TO SERVE  
 RIVERSIDE HEALTH SYSTEM  
 PROJECT NO. 824PPS  
 BUILT BY McCULLOUGH EXCAVATION, INC.  
 BOOKED 3/2/99 PER AS BUILT PLAN



SCALE: 1" = 100'

LATERAL 59, MAIN 9, SANITARY SEWER NO. 23  
 PROJECT NO. 468-82923 (743765)  
 BUILT BY DONDLINGER AND SONS  
 BOOKED 3/4/99 PER PLAN



| CONSTRUCTION RECORD  |           |            |       |                    |  | SERVICE RECORD             |               |                       |                       |                       |                 |            |
|--|-----------|------------|-------|--------------------|--|----------------------------|---------------|-----------------------|-----------------------|-----------------------|-----------------|------------|
| STATION  | ELEVATION |            | DEPTH | MANHOLE            | 4-INCH "Y" BRANCHES                                  |                            | No. of Permit |                       | House Number          |                       | DATE OF PERMITS |            |
|  | GROUND    | GRADE      |       |                    | North West   | South East                 | North West    | South East            | North West            | South East            | North West      | South East |
| SANITARY SEWER TO SERVE LOT 1, CHAMBERLAIN'S BY-PASS ADDITION (847PPS) |           |            |       |                    |  |                            |               |                       |                       |                       |                 |            |
| 0+00   | 88.19     | 82.84 out  | 5.4   | 0+00 EXIST         |  |                            |               |                       |                       |                       |                 |            |
|  | 88.19     | 84.09 in   | 4.1   |                    |  |                            |               |                       |                       |                       |                 |            |
| 1+00   | 89.20     | 84.54      | 4.7   |                    |  |                            |               |                       |                       |                       |                 |            |
|  | 90.20     | 84.79      | 5.4   | 1+54.4             |  | 4" STUB E 84.79            |               |                       |                       |                       |                 |            |
| SANITARY SEWER TO SERVE RIVERSIDE HEALTH SYSTEM (824PPS)               |           |            |       |                    |  |                            |               |                       |                       |                       |                 |            |
| 0+00   | 115.18    | 103.95 out | 11.2  | 0+00 EXIST         |  |                            |               |                       |                       |                       |                 |            |
|  | 115.18    | 105.81 in  | 9.4   |                    |  |                            |               |                       |                       |                       |                 |            |
|  |           |            |       |                    | 0+50.3 4" WYE N                                      | 0+48.3 4" WYE S            |               |                       |                       |                       |                 |            |
|  | 116.45    | 106.66     | 9.8   | 0+65.3             |  | 4" STUB E 106.91           |               |                       |                       |                       |                 |            |
| LATERAL 59, MAIN 9, SANITARY SEWER NO. 23                              |           |            |       |                    |  |                            |               |                       |                       |                       |                 |            |
| 0+00   | 217.50    | 205.78 out | 11.7  | 0+00               |  |                            |               |                       |                       |                       |                 |            |
|  | 217.50    | 206.11 in  | 11.4  |                    |  |                            |               |                       |                       |                       |                 |            |
| 1+00   | 216.20    | 206.51     | 9.7   |                    |  |                            |               |                       |                       |                       |                 |            |
|  |           |            |       |                    |  | 4" SCH 40<br>TAP 1+44.3    |               | 98-28131-7            |                       | 8200 E<br>317th #1600 |                 | 12-16-98   |
| 2+00   | 215.10    | 206.91     | 8.2   |                    |  |                            |               |                       |                       |                       |                 |            |
|  | 215.70    | 206.96     | 8.7   | 2+12.29            | 6" STUB SW 207.13                                    | 6" STUB S 207.13           | 2000-0348     |                       | 5200 E<br>537th #1800 |                       | 6+00            |            |
|  |           |            |       |                    |  | 6" STUB E 207.13           |               | 5200 E<br>537th #2000 |                       | 3200 E<br>537th #2000 |                 | 7-14-99    |
| LATERAL 58, MAIN 9, SANITARY SEWER NO. 23                              |           |            |       |                    |  |                            |               |                       |                       |                       |                 |            |
| 0+00   | 170.00    | 150.61 out | 19.4  | 0+00 EXIST         |  |                            |               |                       |                       |                       |                 |            |
|  | 170.00    | 164.23 in  | 5.8   | OUTSIDE DROP       |  |                            |               |                       |                       |                       |                 |            |
| 1+00   | 172.80    | 164.73     | 8.1   |                    |  |                            |               |                       |                       |                       |                 |            |
|  | 173.60    | 164.87 out | 8.7   | 1+29.84            |  |                            |               |                       |                       |                       |                 |            |
|  | 173.60    | 164.97 in  | 8.6   |                    |  |                            |               |                       |                       |                       |                 |            |
| 2+00   | 173.60    | 165.33     | 8.3   |                    | 4" SCH 40<br>2+06.72                                 |                            | 1999-1545     |                       | 3450 #<br>WOODLAWN    |                       | 12-28-99        |            |
|  | 173.60    | 165.62     | 8.0   | 2+59.72            |  | 6" STUB SW 165.78          |               | 312.7                 |                       | 3450<br>WOODLAWN      |                 | 2-23-99    |
| LATERAL 4, MAIN 18, SOUTHWEST INTERCEPTOR SEWER (CONT. FROM P-67)      |           |            |       |                    |  |                            |               |                       |                       |                       |                 |            |
| 2+00   | 155.00    | 147.59     | 7.4   |                    | wrong<br>right → 2+00 4" N 4V22H<br>2+06.5 4" SCH 40 |                            | 2001-01191    |                       | 12601 W<br>Birch      |                       | 5-11-00         |            |
| 3+00   | 155.30    | 147.79     | 7.5   |                    | 2+92 4" N 4V21H<br>4" SCH 40                         |                            | 2001-00514    |                       | 12605 W<br>Birch      |                       | 3-9-01          |            |
|  | 155.10    | 147.88 out | 7.2   | 3+42.5             |  |                            |               |                       |                       |                       |                 |            |
|  | 155.10    | 147.98 in  | 7.1   |                    |  |                            |               |                       |                       |                       |                 |            |
| 4+00   | 155.10    | 148.10     | 7.0   |                    | 3+79 4" N 3V20H                                      |                            | 2001-02560    |                       | 12609<br>Birch        |                       | 9-18-02         |            |
| 5+00   | 155.00    | 148.30     | 6.7   |                    |  |                            |               |                       |                       |                       |                 |            |
|  |           |            |       |                    |  | 5+37 4" N 3V20H            | 2002-02859    |                       | 901<br>Firefly        |                       | 10-17-02        |            |
| 6+00   | 155.80    | 148.50     | 7.3   |                    | 6+26 4" N 3V20H                                      |                            | 2002-01296    |                       | 905<br>Firefly        |                       | 5-6-02          |            |
|  | 155.10    | 148.67     | 6.4   | 6+87.0             | 4" STUB 25' NW 149.00                                |                            | 2002-01573    |                       | 909<br>Firefly        |                       | 6-5-02          |            |
| SANITARY SEWER TO SERVE PARK VISTA SECOND ADDITION (PHASE 1) 803PPS    |           |            |       |                    |  |                            |               |                       |                       |                       |                 |            |
| CONT. FROM P-66  |           |            |       |                    |  |                            |               |                       |                       |                       |                 |            |
| 7+00   | 229.20    | 220.62     | 8.6   |                    | 4" SCH 40 PVC<br>5+89.93 Saddle                      |                            | 2001-00906    |                       | 5036<br>E 49th        |                       | 4-17-01         |            |
|  | 229.59    | 220.66 out | 8.9   | 7+09.93            |  |                            | 2000-00277    |                       | 5048 E<br>49th ST N   |                       | 2-1-00          |            |
|  | 229.59    | 220.72 in  | 8.9   |                    | 4" SCH 40<br>7+79.93                                 |                            | 2000-01696    |                       | 5104 E<br>49th        |                       | 7-25-00         |            |
| 8+00   | 229.60    | 221.07     | 8.5   |                    | 4" SCH 40<br>8+38.28                                 |                            | 2000-01762    |                       | 5118 E<br>49th        |                       | 8-2-00          |            |
|  | 230.40    | 221.45     | 8.9   |                    |  |                            | 2001-01642    |                       | 5180 E<br>49th ST N   |                       | 7-6-01          |            |
|  | 230.02    | 221.59     | 8.4   | 9+35.28            |  |                            |               |                       |                       |                       |                 |            |
| 10+00  | 230.10    | 221.88     | 8.2   |                    | 4" SCH 40 PVC<br>9+94.28 Saddle                      |                            | 2001-00448    |                       | 5142<br>E 49th        |                       | 2-28-01         |            |
|  |           |            |       |                    | 4" SCH 40<br>10+63.58                                |                            | 2000-00971    |                       | 5206 E<br>49th N      |                       | 4-70-00         |            |
|  |           |            |       |                    | 4" SCH 40<br>11+58.58                                |                            | 2000-01249    |                       | 5220 E<br>49th N      |                       | 5-22-00         |            |
|  | 231.15    | 222.71     | 8.4   | 11+85.58           | 4" STUB NE 223.04                                    |                            | 2000-01909    |                       | 5234<br>49th          |                       | 8-25-00         |            |
| LINE 4   |           |            |       |                    |  |                            |               |                       |                       |                       |                 |            |
| 0+00 L-4   | 231.77    | 222.64     | 9.1   | 0+00 = 8+22.69 L-2 |  |                            |               |                       |                       |                       |                 |            |
|  |           |            |       |                    | 4" SCH 40<br>1+00 Saddle                             | 4" SCH 40<br>0+55          | 2000-03514    | 2000-00356            | 5122<br>Ashton        | 5220<br>Ashton        | 5-10-99         | 2-8-00     |
| 1+00   | 231.80    | 223.03     | 8.8   |                    |  |                            |               |                       |                       |                       |                 |            |
|  |           |            |       |                    | 4" SCH 40<br>2+11.0                                  | 4" SCH 40<br>2+37.1        | 2000-00125    | 1999-00723            | 5186<br>Ashton        | 5216 E<br>Ashton      | 1-15-2000       | 9-21-00    |
| 2+00   | 232.10    | 223.43     | 8.7   |                    |  |                            |               |                       |                       |                       |                 |            |
|  |           |            |       |                    |  | 4" SCH 40<br>3+17.1 Saddle |               | 99-01225              |                       | 5212<br>Ashton        |                 | 11-18-99   |
|  | 231.66    | 224.05     | 7.6   | 3+58.08            |  |                            | 2001-03064    |                       | 5130 E<br>Ashton      |                       | 12-3-01         |            |
| LINE 5   |           |            |       |                    |  |                            |               |                       |                       |                       |                 |            |
| 0+00 L-5   | 231.01    | 221.53     | 9.5   | 0+00 = 5+13.27 L-2 | 4" SCH 40<br>5+23.27                                 |                            | 2000-00124    |                       | 4964<br>PARKHURST     |                       | 1-15-2000       |            |
| 1+00   | 229.40    | 221.85     | 7.6   |                    |  |                            |               |                       |                       |                       |                 |            |
|  | 229.48    | 221.98     | 7.5   | 1+42.53            |  |                            | 99-01226      |                       | 4976<br>PARKHURST     |                       | 11-18-99        |            |
| LINE 6   |           |            |       |                    |  |                            |               |                       |                       |                       |                 |            |
| 0+00 L-6   | 230.94    | 220.99     | 9.9   | 0+00 = 4+29.84 L-2 | 4" SCH 40<br>0+15 SADDLE                             |                            |               |                       |                       |                       |                 |            |
|  |           |            |       |                    |  | 4" STUB SE 221.40          | 2000-02630    |                       | 4940 N<br>PARKHURST   |                       | 11-30-00        |            |
|  | 231.18    | 221.12     | 10.1  | 0+33.02            |  |                            | 2000-02623    |                       | 5110<br>Ashton        |                       | 10-28-01        |            |

LINE 4 CONT.  
FROM P-67

LINE 3

LINE 4

LINE 5

LINE 6

\* 3450 N Woodlawn - 71 mudt oik also installed