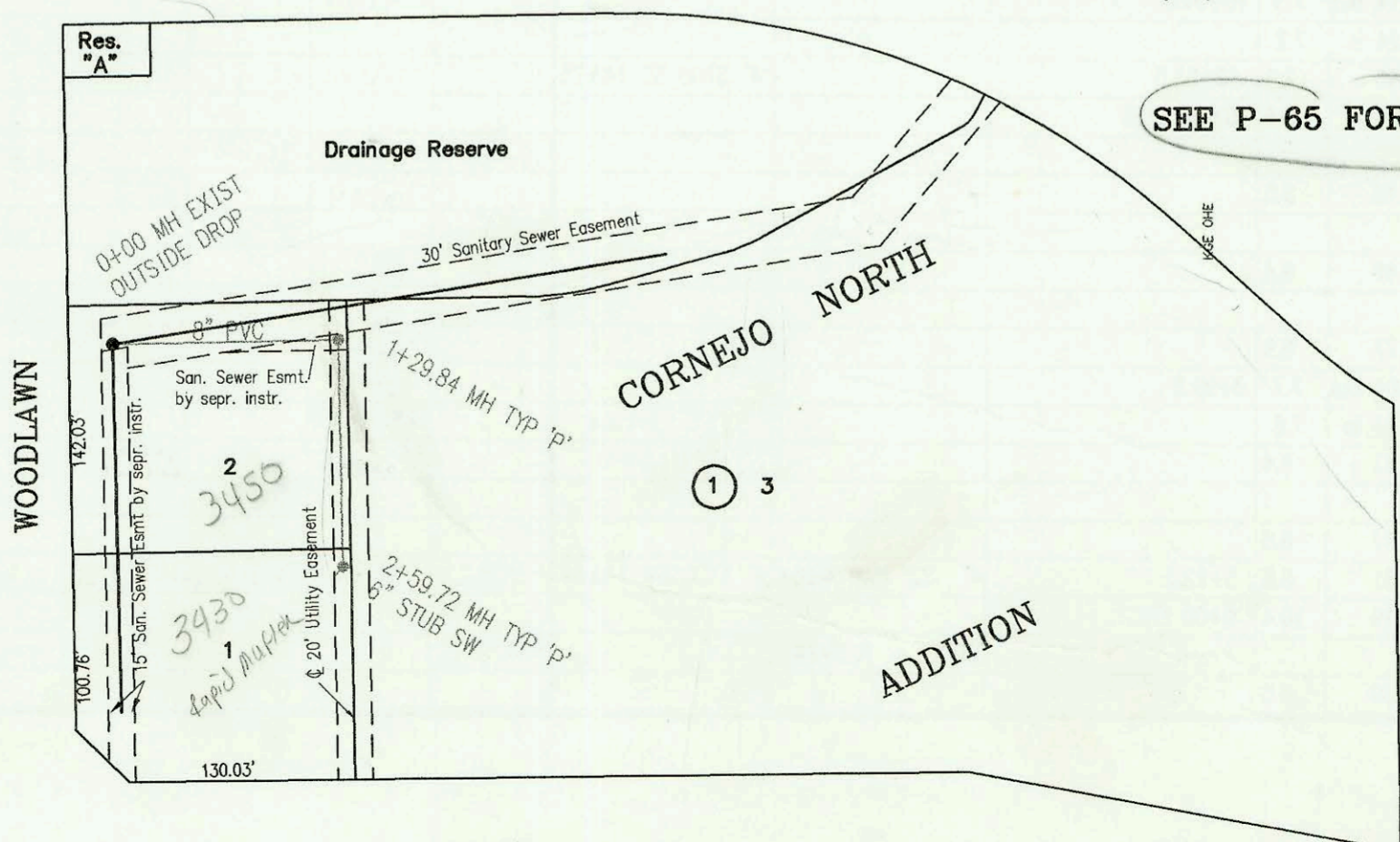


SCALE: 1" = 100'

Bel Aire sewers

SANITARY SEWER TO SERVE
 PARK VISTA 2ND (PHASE 1)
 PROJECT NO. 803PPS
 BUILT BY UTILITY CONTRACTORS INC.
 BOOKED 3/3/99 PER AS BUILT PLAN

LATERAL 58, MAIN 9, SANITARY SEWER NO. 23
 PROJECT NO. 468-82915 (743740)
 BUILT BY W. B. CARTER CONSTRUCTION CO.
 BOOKED 3/4/99 PER PLAN



SCALE: 1" = 100'

SEE P-65 FOR DATA

CONSTRUCTION RECORD						SERVICE RECORD						
STATION	ELEVATION		DEPTH	MANHOLE	4-INCH "Y" BRANCHES		No. of Permit		House Number		DATE OF PERMITS	
	GROUND	GRADE			North West	South East	North West	South East	North West	South East	North West	South East
SANITARY SEWER TO SERVE PARK VISTA SECOND ADDITION (PHASE 1) 803PPS												
LINE 1	0+00 L-1	223.40	217.57	5.8	0+00 EXIST							
	0+20	224.00	217.65	6.3								
		224.53	217.92 out	6.6	0+74.84 = 0+00 L-3							
		224.53	217.96 in	6.6								
	1+00	224.60	218.07	6.5								
	2+00	225.90	218.53	7.4	4" SCH 40 Saddle 2+32.05	2001- 00009		4989 Parkhurst		1-2-01		
	3+00	227.30	218.98	8.3								
		228.61	219.18	9.4	3+44.05 = 0+00 L-2							
	4+00	228.40	219.41	9.0								
	5+00	229.40	219.86	9.5								
	6+00	230.40	220.30	10.1				2650- 00128	4933 Parkhurst		1-5-2005	
	7+00	230.20	220.75	9.5								
		231.20	220.87	10.3	7+27.49	2000 01802		5103 E ASHTON		8-9-00		
	8+00	231.40	221.09	10.3		2000 01802		5115 E ASHTON		8-9-00		
	9+00	232.20	221.38	10.8		2001 02400		5133 E ASHTON		9-26-01		
	10+00	232.60	221.68	10.9								
		233.39	221.75	11.6	10+23.11	2000 00357		5145 ASHTON		2-11-02		
		233.39	221.90	11.5								
	11+00	232.60	222.21	10.4		2000 00358		5157 ASHTON		2-11-02		
	12+00	232.60	222.62	10.0		2001- 02401		5201 ASHTON		9-26-01		
	13+00	232.60	223.03	9.6		2001- 02402		5209 ASHTON		9-26-01		
	14+00											
		234.01	223.46	10.6	14+05.45	2001- 01589		5243 E ASHTON		6-28-01		
LINE 2	0+00 L-2	228.61	219.29	9.3	0+00 = 3+44.05 L-1	4" SCH 40 0+35	1999 00153	4957 N Parkhurst		7-9-99		
	1+00	228.90	219.60	9.3								
	2+00	229.90	219.91	10.0	4" SCH 40 Saddle 3+32.7	3523	2002 0111	4955 Parkhurst	4945 Parkhurst	5-20-99		
		229.69	220.03	9.7	2+39.86	4" SCH 40 2+16.86	2000 00589	4953 Parkhurst		3-6-00		
	3+00	228.90	220.30	8.6								
	4+00	230.10	220.75	9.4		2000 02630		4940 Parkhurst		11-30-00		
		230.94	220.88 out	10.1	4+29.84 = 0+00 L-6							
		230.94	220.94 in	10.0		4" SCH 40 4+72.44	2000 00127	4952 Parkhurst		1-5-2000		
	5+00	230.50	221.27	9.2								
		231.01	221.33 out	9.7	5+13.27 = 0+00 L-5							
		231.01	221.50 in	9.5			2000 00137	5107 E 49TH		3-18-02		
	6+00	231.20	221.77	9.4								
					4" SCH 40 6+39.27 Saddle		2000-00008	5115 S 49TH N		1-2-01		
	7+00	231.50	222.09	9.4		4" SCH 40 7+16.3	99-00151	5118 ASHTON		1-2-00	7-9-99	
	8+00	231.50	222.40	9.1		4" SCH 40 7+20.99	2000- 00972	5127 E 49TH N		4-20-00		
						4" SCH 40 7+34.69	2000- 00970	5133 E 49TH N		4-20-00		
		231.77	222.47 out	9.3	8+22.69 = 0+00 L-4	4" SCH 40 PVC 8+57.69 Saddle	2001 01094	5203 E 49TH N		5-3-01		
		231.77	222.52 in	9.3		4" SCH 40 9+21.3	2000 02321	5014 E 49TH	5024 ASHTON	10-24-00	8-7-99	
	9+00	231.80	222.85	9.0								
		232.27	223.24	9.0	9+92.22	4" SCH 40 4" STUB NE 223.54	2001- 02035	5231 ASHTON	5222 ASHTON	10-15-01	1-5-2000	
LINE 3	0+00 L-3	224.53	217.88	6.7	0+00 = 0+74.84 L-1							
	1+00	225.10	218.29	6.8		4" SCH 40 1+18	1999-00520	4961 Parkhurst		8-30-99		
	2+00	225.50	218.69	6.8								
		226.61	218.96 out	7.7	2+65.85	4" SCH 40 2+72.85	99-00932	4963 Parkhurst		9-22-99		
		226.61	219.02 in	7.6								
	3+00	227.40	219.15	8.3		4" SCH 40 3+74.9 Saddle	4" SCH 40 3+74.9 Saddle	4965 Parkhurst		3-4-99		
	4+00	227.50	219.52	8.0			2001- 00207	4967 Parkhurst		1-30-01		
	5+00	228.40	219.88	8.5								
	6+00	228.80	220.25	8.5								