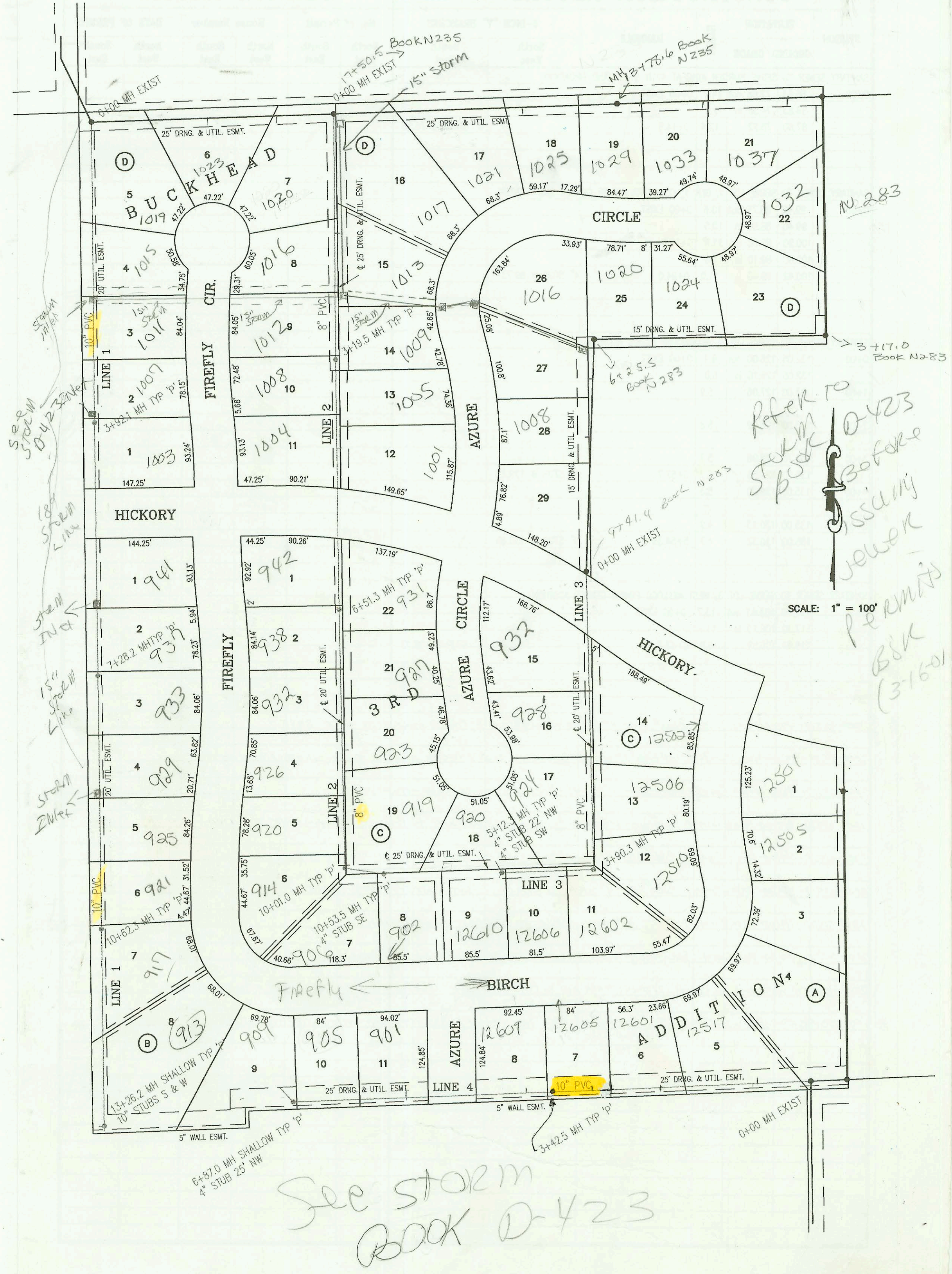


LATERAL 5, MAIN 18, SOUTHWEST INTERCEPTOR SEWER
PROJECT NO. 468-82845 (743583)
BUILT BY W. B. CARTER CONSTRUCTION CO.
BOOKED 3/17/99 PER PLAN



CONSTRUCTION RECORD						SERVICE RECORD							
STATION	ELEVATION		DEPTH	MANHOLE	4-INCH "Y" BRANCHES		No. of Permit		House Number		DATE OF PERMITS		
	GROUND	GRADE			North West	South East	North West	South East	North West	South East	North West	South East	
LINE 1	LATERAL 4, MAIN 18, SOUTHWEST	INTERCEPTOR SEWER											
	0+00 L-1	160.30	145.65	14.7	0+00 EXIST								
	1+00	157.10	145.85	11.3				2002-01005	1019 N Firefly Cir			4-9-02	
	2+00	156.30	146.06	10.2				2002-01561 2003-00537 2002-01594	1015 Firefly 1014 Firefly 1007 Firefly			6-4-02 2-27-03 6-5-02	
	3+00	156.70	146.20	10.5									
		155.90	146.45 out	9.4	3+92.1								
		155.90	146.55 in	9.3									
	4+00	155.90	146.57	9.3									
	5+00	157.60	146.77	10.8				2001-03140	911 Firefly			12-10-01	
	6+00	157.00	146.97	10.0				2001-02520	937 Firefly			10-10-01	
	7+00	156.80	147.17	9.6				2002-00258	933 Firefly			1-29-02	
		157.20	147.23	10.0	7+28.2								
	8+00	156.20	147.37	8.8				2002-00572	929 Firefly			3-27-02	
	9+00	156.40	147.57	8.8				2002-01536	925 Firefly			5-30-02	
	10+00	156.80	147.78	9.0									
	157.40	147.90	9.5	10+62.3									
11+00	156.80	147.98	8.8				2002-02536	917 Firefly			7-13-02		
12+00	156.00	148.18	7.8				2002-00732	913 Firefly			3-18-02		
13+00	155.20	148.38	6.8										
	155.20	148.43	6.8	13+26.2	10" STUB W 148.53	10" STUB S 148.43							
LINE 2	0+00 L-2	160.00	144.86 out	15.1	0+00 EXIST								
		160.00	145.03 in	15.0				2002-00307	2001-00471	1020 N Firefly Cir	1017 N AZURE CIR	2-5-02	3-5-01
	1+00	156.60	145.33	11.3		4" SCH 40 0+40 4" E 9V19H		2002-01294	2001-02887	1016 Firefly	1013 N AZURE	5-7-02	11-13-01
	2+00	155.00	145.63	9.4		4" SCH 40 1+58 4" E 7V18H		2002-00873	2001-00947	1012 Firefly	1009 N AZURE CIR	3-27-02	4-19-01
	3+00	155.80	145.93	9.9				2003-00170		1008 Firefly		1-17-03	
		156.40	145.99 out	10.4	3+19.5	4" SCH 40 3+59 4" E 6V15H							
		156.40	146.09 in	10.3		4" SCH 40 4+35 4" E 5V15H		2001-02886	2000-01841	1004 N Firefly	1001 AZURE	4-13-01	8-16-00
	4+00	155.10	146.33	8.8									
	5+00	156.20	146.63	9.6		4" SCH 40 5+86.3		2001-02519	2000-00468	942 Firefly	931 AZURE	10-10-01	2-18-00
	6+00	155.40	146.94	8.5				2002-00624		938 Firefly		3-8-02	
		154.70	147.09	7.6	6+51.3	4" SCH 40 7+06.7			2000-00469	909 AZURE		2-18-00	
	7+00	155.70	147.24	8.5				2002-00908	2000-01190	932 Firefly	923 N AZURE CR	4-7-02	5-11-00
	8+00	157.20	147.54	9.7		4" SCH 40 8+44							
	9+00	156.20	147.84	8.4		4" SCH 40 8+86 Saddle 4" SCH 40 9+30.6 Saddle	4" SCH 40 9+42.4	2001-01837 2001-01835 2001-01892	2000-01189 2000-01185	926 N FIREFLY 920 N Firefly 914 N Firefly	919 N AZURE	7-24-01 7-24-01	5-11-00
	10+00	155.40	148.14 out	7.3	10+01.0				2003-03189	910 Firefly		8-1-01	12-14-01
	155.40	148.24 in	7.2										
	155.60	148.40	7.2	10+53.5		4" STUB SE 148.75		2000-00461	902 Firefly			2-18-00	
LINE 3	0+00 L-3	155.80	146.86	8.9	0+00 EXIST								
								2003-00538		932 AZURE		2-27-03	
	1+00	155.70	147.16	8.5		4" SCH 40 1+10 Saddle 4" SCH 40 2+44.3 SADDLE			2001-01364		12502 W Birch	6-4-01	
	2+00	156.90	147.46	9.4		4" SCH 40 2+170.6 SADDLE		2000-02725		928 N AZURE		12-15-00	
								2000-02689		904 AZURE		12506 W Birch	12-8-00
	3+00	156.70	147.77	8.9		4" SCH 40 3+61.7		2002-02529		904 AZURE		12510 W Birch	9-13-02
		155.70	148.04 out	7.7	3+90.3				2000-01248				5-22-00
	155.70	148.14 in	7.6		4" SCH 40 4+00.3 SADDLE 4" SCH 40 4+54.3 Saddle			2000-02338		12502 W Birch		10-25-00	
4+00	155.60	148.17	7.4				2001-00877			12606 W Birch		4-12-01	
5+00	155.30	148.47	6.8										
	155.30	148.51	6.8	5+12.3	4" SCH 40 4" 22" NW 148.84	4" STUB SW 148.84	2002-03452	2000-00909	920 N AZURE CIR	12610 W Birch	12-20-02	4-13-00	
LINE 4	0+00 L-4	157.60	147.19	10.4	0+00 EXIST								
						0+72 4" N 5V24H		2001-01838		12517 W BIRCH		7-24-01	
1+00	156.00	147.39	8.6										