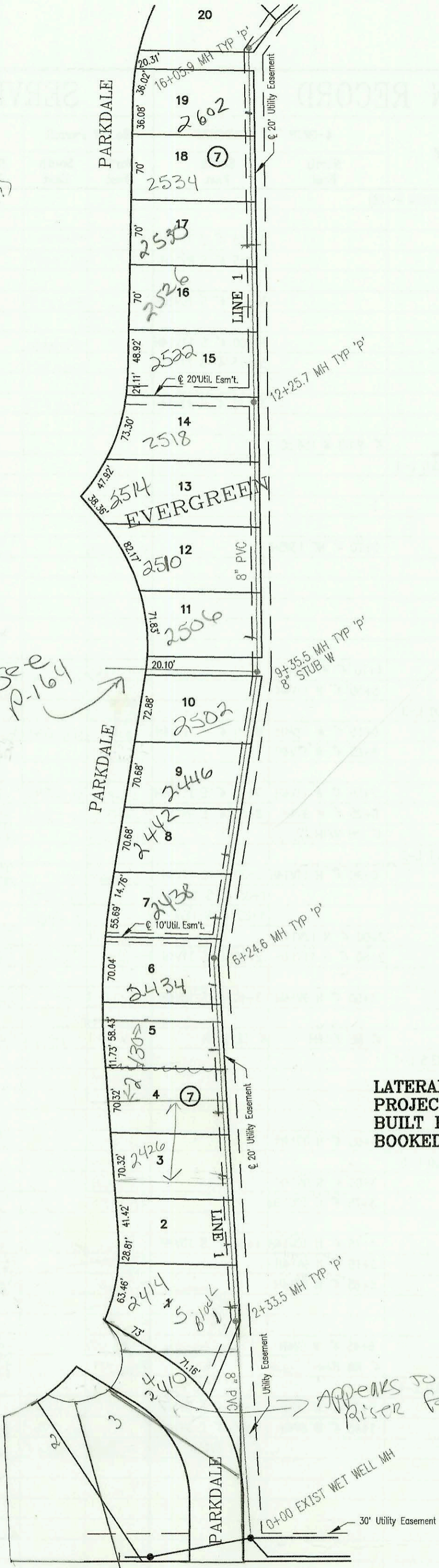


P-114(?)

see P-164

P-114(?)



SCALE: 1" = 100'

LATERAL 412, SOUTHWEST INTERCEPTOR SEWER  
 PROJECT NO. 468-82900 (743625)  
 BUILT BY UTILITY CONTRACTORS INC.  
 BOOKED 6/9/99 PER PLAN

CONSTRUCTION RECORD						SERVICE RECORD						
STATION	ELEVATION		DEPTH	MANHOLE	4-INCH "Y" BRANCHES		No. of Permit		House Number		DATE OF PERMITS	
	GROUND	GRADE			North West	South East	North West	South East	North West	South East	North West	South East
LATERAL 412, SOUTHWEST INTERCEPTOR SEWER												
0+00 L-1	165.10	144.00	21.1	0+00 EXIST WET WELL								
1+00	163.70	144.30	19.4									
2+00	163.90	144.60	19.3									
	164.40	144.70	19.7	2+33.5								
3+00	164.00	144.90	19.1		2+50 4" W 15V4H	2005-01922		2414 Parkdale		8-1-05		
					3+15 4" W 15V4H							
4+00	164.00	145.20	18.8		3+90 4" W 15V4H			2426 Parkdale				
					4+60 4" W 15V4H							
5+00	164.00	145.50	18.5		5+25 4" W 15V4H	2003-03352		2430 Parkdale		12-22-03		
					5+95 4" W 14V4H	2004-01749		2434 Parkdale		6-23-04		
6+00	164.00	145.80	18.2									
	164.40	145.87	18.5	6+24.6								
7+00	164.00	146.10	17.9		6+65 4" W 14V4H	2005-01673		2438 Parkdale		7-11-05		
					7+35 4" W 14V4H	2003-01273		2442 Parkdale		5-9-03		
8+00	164.00	146.40	17.6		8+05 4" W 14V4H	2004-02226		2446 Parkdale		1-26-04		
					8+80 4" W 14V4H	2005-02153		2502 Parkdale		9-1-05		
9+00	164.00	146.70	17.3									
	164.40	146.81	17.6	9+35.5	8" STUB W 147.01							
10+00	164.00	147.00	17.0		9+70 4" W 13V4H	2002-00631		2504 Parkdale		9-13-03		
					10+40 4" W 13V4H	2002-02631		2510 S Parkdale		9-24-02		
11+00	164.00	147.30	16.7		11+10 4" W 13V4H	2001-01218		2514 N Parkdale		5-17-01		
					11+85 4" W 13V4H	2003-02101		2518 N Parkdale		8-11-03		
12+00	164.00	147.60	16.4		12+55 4" W 12V4H	2003-02584		2522 Parkdale		10-6-03		
	164.40	147.68	16.7	12+25.7								
13+00	164.00	147.90	16.1		13+25 4" W 12V4H	2003-02714		2526 Parkdale		2-2-00		
					13+95 4" W 12V4H	2002-02751		2530 Parkdale		10-7-02		
14+00	164.00	148.20	15.8									
					14+65 4" W 12V4H	2001-01435		2534 N Parkdale		6-12-01		
15+00	164.00	148.50	15.5		15+35 4" W 12V4H	2003-00508		2538 Parkdale		2-25-02		
16+00	164.00	148.80	15.2		16+20 4" NW 12V6H	2001-00618		2545 Parkdale		3-20-01		
	164.40	148.82 out	15.6	16+05.9								
	164.40	149.02 in	15.4		16+70 4" NW 11V12H							
17+00	164.00	149.30	14.7		17+40 4" NW 11V14H	2001-01308		2614 Parkdale		5-29-01		
	164.40	149.37	15.0	17+23.0 = 0+00 L-2								
18+00	164.10	149.60	14.5		18+10 4" NW 11V14H	2000-01680		2618 N Parkdale		7-21-00		
					18+80 4" NW 10V14H	2001-01199		10817 W Central PK		5-16-01		
19+00	164.30	149.90	14.4									
					19+50 4" NW 10V14H	99-01067		10813 Central PK		11-1-99		
20+00	164.40	150.20	14.2									
21+00	164.90	150.50 out	14.4	21+00.1								
	164.90	150.70 in	14.2									
22+00	165.20	151.00	14.2									
	165.90	151.21 out	14.7	22+69.7								
	165.90	151.41 in	14.5									
23+00	164.80	151.50	13.3									
					23+60 4" W 10V4H	99-01260		2620 Stoney Pt		11-19-99		
24+00	166.50	151.80	14.7									
					24+50 4" W 12V4H	2001-00387		2624 Stoney Pt		7-14-99		
25+00	167.50	152.10	15.4		25+50 4" W 12V4H	99-00623		2628 Stoney Pt		9-8-99		
	168.30	152.32	16.0	25+72.5								
26+00	168.40	152.40	16.0		25+85 4" W 12V4H	99-123159		2702 Stoney Pt		6-10-99		
					26+55 4" W 11V4H	99-123087		2706 Stoney Pt		6-10-99		
27+00	168.10	152.70	15.4		27+25 4" W 11V4H	99-121237		2710 Stoney Pt		6-10-99		
					27+90 4" W 10V4H	99-00760		2714 Stoney Pt		9-23-99		
28+00	168.50	153.00	15.5									
					28+60 4" W 10V4H	2001-00990		2718 Stoney Pt		7-14-99		
29+00	167.80	153.30	14.5		29+30 4" W 9V4H	99-121207		2722 Stoney Pt		6-8-99		
	168.10	153.31	14.8	29+02.5 = 0+00 L-4								
30+00	166.40	153.63	12.8		30+00 4" W 8V4H	99-123067		2726 Stoney Pt		6-10-99		
					30+70 4" W 8V4H	2001-00378		2730 Stoney Pt		2-18-99		
31+00	164.70	153.95	10.7									
	163.60	154.24 out	9.4	31+89.1								
	163.60	154.44 in	9.2									
32+00	163.30	154.47	8.8									
					32+45 4" S5V14H		99-00624	2734 Stoney Pt		9-8-99		
CONT. ON P-79												