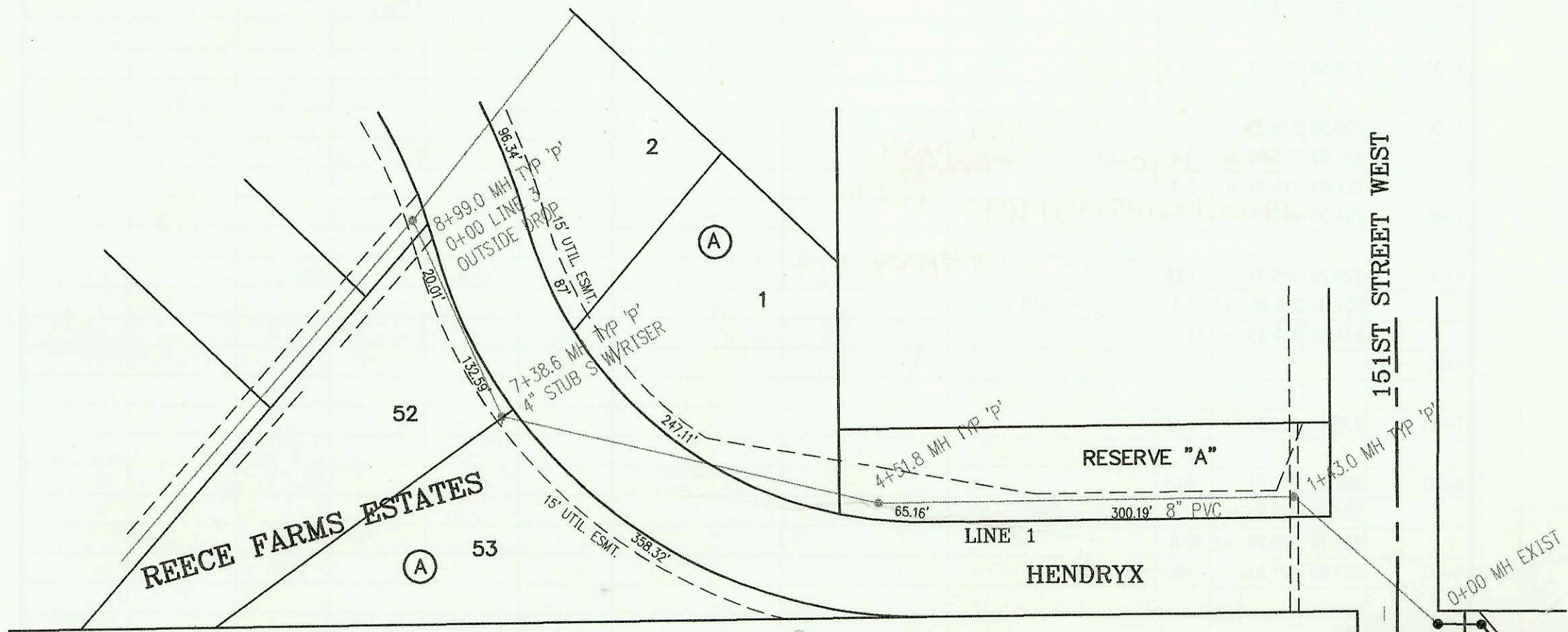
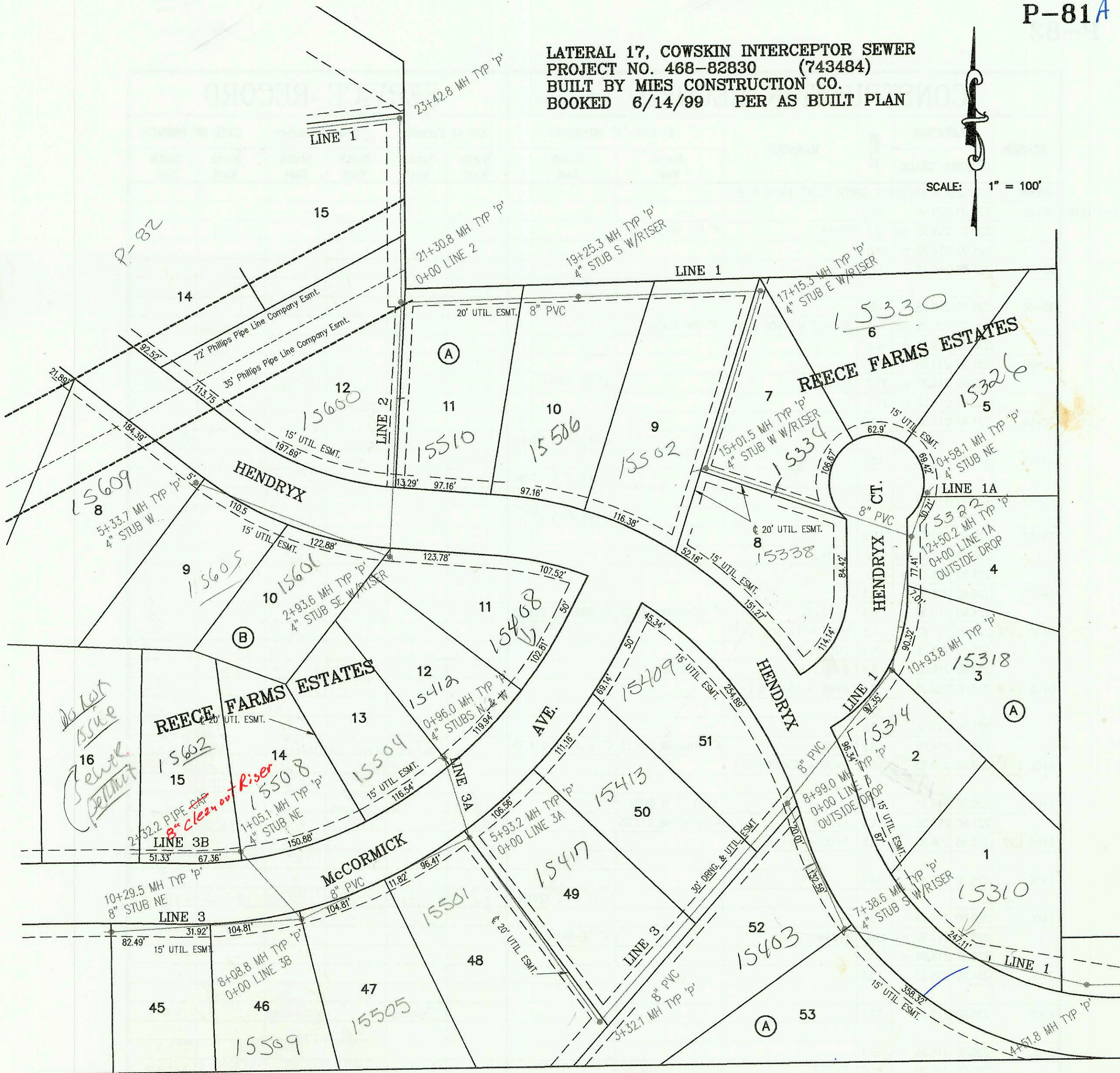


LATERAL 17, COWSKIN INTERCEPTOR SEWER  
PROJECT NO. 468-82830 (743484)  
BUILT BY MIES CONSTRUCTION CO.  
BOOKED 6/14/99 PER AS BUILT PLAN

SCALE: 1" = 100'



Not in BID  
check with  
county for sewer  
on Moscelun st

Moscelun st

CONSTRUCTION RECORD					SERVICE RECORD							
STATION	ELEVATION		DEPTH	MANHOLE	4-INCH "Y" BRANCHES		No. of Permit		House Number		DATE OF PERMITS	
	GROUND	GRADE			North West	South East	North West	South East	North West	South East	North West	South East
LATERAL 17, COWSKIN INTERCEPTOR SEWER												
0+00 L-1	210.40	196.85	13.5	0+00 EXIST								
1+00	209.60	197.26	12.3									
	211.50	197.43 out	14.1	1+43.0								
	211.50	197.43 in	14.1									
2+00	211.30	198.10	13.2									
3+00	211.60	199.11	12.5									
4+00	212.00	200.12	11.9									
	212.60	200.64 out	12.0	4+51.8								
	212.60	200.74 in	11.9									
5+00	214.00	200.89	13.1									
					5+70 4" N 12V19H		2001-00106	15310 Hendryx		2-27-01		
6+00	216.70	201.19	15.5									
7+00	218.50	201.49	17.0									
	221.00	201.61	19.4	7+38.6	4" S 15V5H							
	221.00	201.71	19.3									
8+00	220.40	201.90	18.5		8+15 4" SW 15V12H							
	220.30	202.20 out	18.1	8+99.0 = 0+00 L-3								
	220.30	202.30 in	18.0									
9+00												
10+00	224.10	202.61	21.5		10+41 4" SE 18V11		2000-00312	15314 Hendryx et		2-4-2000		
	224.60	202.90 out	21.7	10+93.8								
	224.60	203.00 in	21.6									
11+00												
					11+45 4" SE 17V21		2002-00402	15318 Hendryx et		2-14-02		
12+00	224.50	203.34	21.2									
	225.10	203.50 out	21.6	12+50.2 = 0+00 L-1A	4" E 18V8H							
	225.10	203.60 in	21.5									
13+00	224.80	203.76	21.0									
14+00	228.30	204.08	24.2		14+15 4" N 21V5H	14+20 4" S 21V15H	2001-00753	15334 Hendryx	15388W Hendryx	1-15-03	8-10-01	
15+00	228.20	204.40 out	23.8	15+01.5	4" W 20V15H		2000-00994	15502 Hendryx		3-28-00		
	228.20	204.50 in	23.7									
16+00	225.00	204.82	20.2									
17+00	223.80	205.15	18.7									
	224.00	205.20 out	18.8	17+15.3	4" E 15V5H		99-01002	15330 Hendryx et		10-25-99		
	224.00	205.30 in	18.7									
18+00	226.00	205.58	20.4									
19+00	221.50	205.92	15.6									
	221.50	206.00 out	15.5	19+25.3	4" S 12V15H		2001-02312	15556 Hendryx		9-25-01		
	221.50	206.10 in	15.4									
20+00	222.30	206.34	16.0									
21+00	219.50	206.65	12.8									
	219.40	206.75 out	12.6	21+30.8 = 0+00 L-2								
	219.40	206.85 in	12.5									
22+00	217.60	207.06	10.5									
23+00	215.00	207.37	7.6									
	214.00	207.50 out	6.5	23+42.8								
	214.00	207.60 in	6.4									
24+00	214.90	207.83	7.1									
25+00	216.60	208.23	8.4									
	218.00	208.45 out	9.6	25+53.3 = 0+00 L-1B								
	218.00	208.55 in	9.4									
26+00	220.10	208.75	11.4		26+77 4" N 9V14H		2000-02718	15608 Hendryx		12-14-00		
27+00	223.30	209.17	14.1									
	225.20	209.25 out	16.0	27+19.0								
	225.20	209.35 in	15.8		27+51 4" N 10V16H		2000-00070	15632 Hendryx		1-8-02		
CONT. ON P-82												