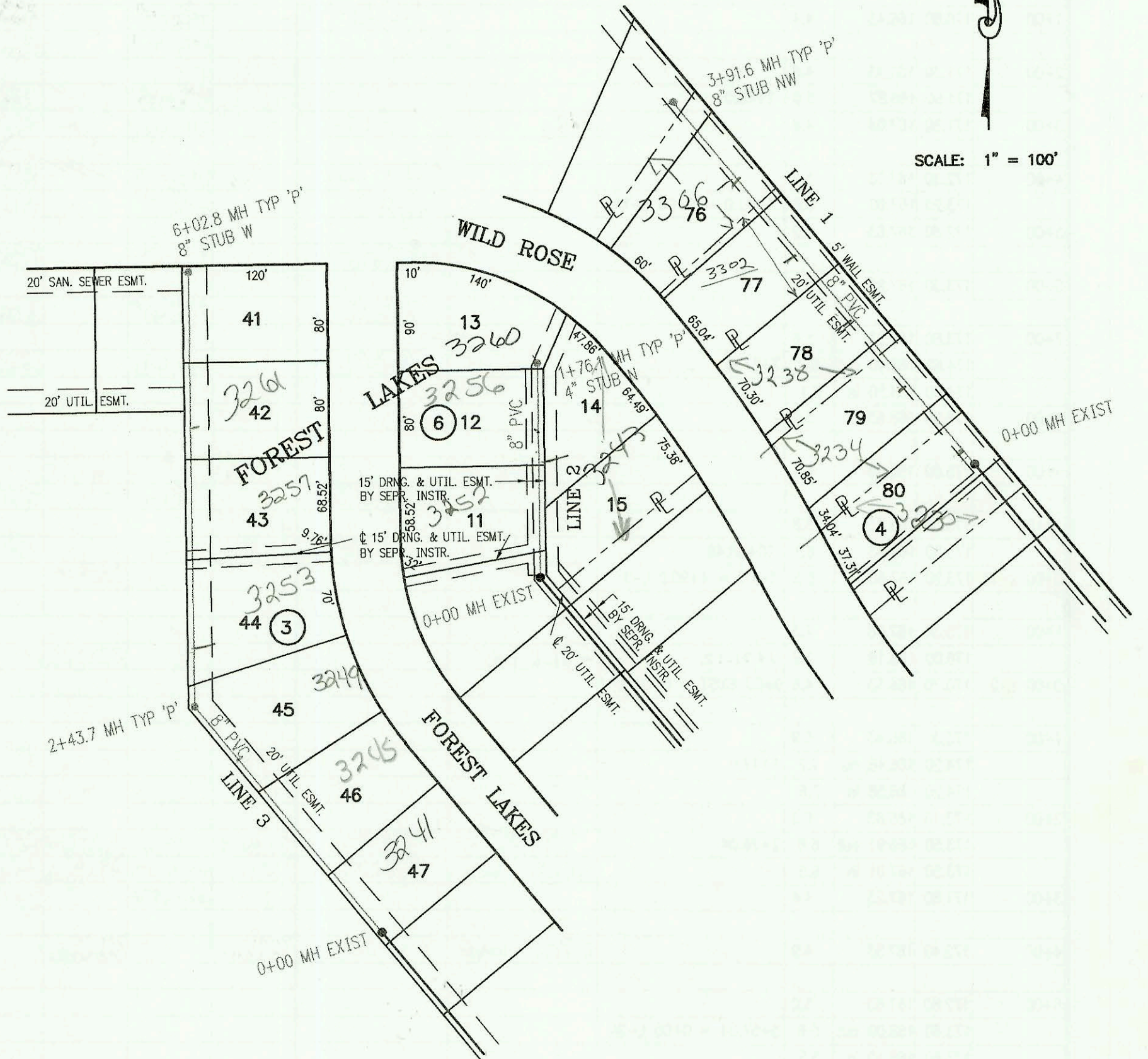


LATERAL 10, MAIN 17, SOUTHWEST INTERCEPTOR SEWER
PROJECT NO. 468-82308 (743790)
BUILT BY W. B. CARTER CONSTRUCTION CO.
BOOKED 6/28/99 PER AS BUILT PLAN



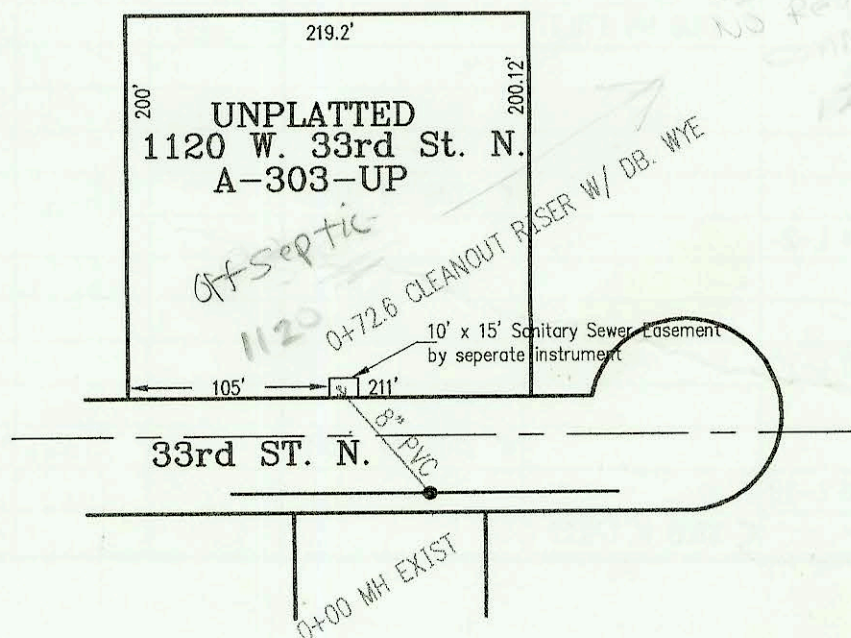
SCALE: 1" = 100'



LATERAL 74, MAIN 17, SANITARY SEWER NO. 22
PROJECT NO. 468-82917 (743757)
BUILT BY DITCH DIGGERS, LLC
BOOKED 7/6/99 PER PLAN



SCALE: 1" = 100'



| CONSTRUCTION RECORD | | | | | | SERVICE RECORD | | | | | | |
|--|-----------|------------|--------|--------------------|------------------------------------|----------------------|---------------|------------|-------------------|-------------------|-----------------|------------|
| STATION | ELEVATION | | DEPTH | MANHOLE | 4-INCH "Y" BRANCHES | | No. of Permit | | House Number | | DATE OF PERMITS | |
| | GROUND | GRADE | | | North West | South East | North West | South East | North West | South East | North West | South East |
| LATERAL 370, SOUTHWEST INTERCEPTOR SEWER (CONT. FROM P-84) | | | | | | | | | | | | |
| 0+00 L-3 | 170.30 | 166.75 | 3.6 | 0+00 EXIST | | | | | | | | |
| 1+00 | 170.50 | 167.05 | 3.4 | | 4" SCH 40 0+66.8 | | 2000-00115 | | 11301 Central Pl | | | 3-17-00 |
| | 171.10 | 167.24 | 3.9 | 1+72.85 | 4" SCH 40 1+80.75 | | 2000-01483 | 2001-02772 | 2810 N Cardington | 11214 Central Pl | 6-24-00 | 11-2-01 |
| 2+00 | 171.00 | 167.35 | 3.6 | | | | | | | | | |
| 3+00 | 171.70 | 167.65 | 4.1 | | 4" SCH 40 2+96.03 | | 1997-00481 | 2002-00817 | 2814 N Cardington | 11210 Central Pl | 8-23-01 | 3-22-02 |
| | 172.60 | 167.78 | 4.8 | 3+48.03 | 4" SCH 40 3+38.03 Saddle | | 2001-01676 | | 2818 Cardington | | 7-9-01 | |
| 4+00 | 172.60 | 167.95 | 4.7 | | 4" SCH 40 4+02.03 Saddle | | 2001-01020 | 2001-02793 | 2822 N Cardington | 11201 Central Pl | 4-27-01 | 11-1-01 |
| 5+00 | 173.30 | 168.25 | 5.1 | | 4" SCH 40 4+97.01 Saddle | 4" SCH 40 5+32.01 | 2001-02012 | 2000-01287 | 2826 Cardington | 11255 Central Pl | 10-14-01 | 5-25-02 |
| | 174.60 | 168.53 out | 6.1 | 5+98.01 | | | | | | | | |
| | 174.60 | 168.63 in | 6.0 | | | | | | | | | |
| 6+00 | | | | | | | | | | | | |
| 7+00 | 173.80 | 168.95 | 4.9 | | | | | | | | | |
| 8+00 | 173.00 | 169.25 | 3.8 | | | | 2000-00008 | | 11209 Central Pl | | 6-30-99 | |
| | 172.70 | 169.41 out | 3.3 | 8+58.85 | | | | | | | | |
| | 172.70 | 169.51 in | 3.2 | | 4" SCH 40 8+27.85 | | 2000-00695 | | 11213 Central Pl | | 3-15-00 | |
| 9+00 | 172.40 | 169.65 | 2.8 | | 4" SCH 40 9+31.25 | | 2000-00695 | | 11203 Central Pl | | 3-8-00 | |
| | 175.80 | 169.91 | 5.9 | 9+87.45 | 4" STUB NW 170.24 | | 2001-00027 | | 11217 Central Pl | | 3-12-01 | |
| 0+00 L-3A | 172.70 | 169.41 | 3.3 | 0+00 = 8+58.85 L-3 | | | | | | | | |
| 1+00 | 171.80 | 169.71 | 2.1 | | | | | | | | | |
| | 172.00 | 169.90 | 2.1 | 1+62.56 | abandoned | 4" STUB SE 170.23 | | | | | | |
| 0+00 L-4 | 171.30 | 166.14 | 5.2 | 0+00 EXIST | | | | | | | | |
| 1+00 | 171.30 | 166.44 | 4.9 | | 4" SCH 40 0+79 | | 99-01410 | | 11357 Central Pl | | 12-9-99 | |
| | | | | | | 4" SCH 40 1+56.1 | 2000-02602 | | 2706 Shefford | | 11-29-00 | |
| 2+00 | 172.00 | 166.74 | 5.3 | | | | 99-00900 | | 11303 Central Pl | | 10-21-99 | |
| | 172.50 | 166.81 out | 5.7 | 2+24.1 | 4" SCH 40 2+27.1 | | 2000-00000 | | 11223 Central Pl | | 3-15-00 | |
| | 172.50 | 166.91 in | 5.6 | | | | | | | | | |
| 3+00 | 171.50 | 167.14 | 4.4 | | | | | | | | | |
| | 171.60 | 167.25 out | 4.4 | 3+38.33 | | | | | | | | |
| | 171.60 | 167.35 in | 4.3 | | | | | | | | | |
| 4+00 | 170.70 | 167.54 | 3.2 | | | | | | | | | |
| | 170.70 | 167.86 | 2.8 | 4+45.39 | 4" SCH 40 4" STUB N 168.19 | | 2001-01058 | | 1124 Central Pl | | 5-1-01 | |
| LATERAL 10, MAIN 17, SOUTHWEST INTERCEPTOR SEWER | | | | | | | | | | | | |
| LINE 1 | 0+00 L-1 | 141.84 | 134.33 | 7.5 | 0+00 EXIST | | | | | | | |
| | 1+00 | 141.40 | 134.63 | 6.8 | | 0+15 4" SW 3V4H | 2002-02414 | | 3239 Wild Rose | | 9-4-02 | |
| | 2+00 | 141.40 | 134.93 | 6.5 | | 0+85 4" SW 3V4H | 2002-02414 | | 3239 Wild Rose | | 6-19-02 | |
| | 3+00 | 141.40 | 135.23 | 6.2 | | 1+55 4" SW 3V4H | 2002-02414 | | 3239 Wild Rose | | 11-4-02 | |
| | 4+00 | 141.50 | 135.51 | 6.0 | 3+91.6 | 8" STUB NW 135.51 | 2003-01919 | | 3302 Wild Rose | | 7-23-03 | |
| | 5+00 | 141.80 | 135.08 | 6.7 | | | 2002-03354 | | 3302 Wild Rose | | 12-12-02 | |
| LINE 2 | 0+00 L-2 | 144.02 | 136.31 | 7.7 | 0+00 EXIST | | | | | | | |
| | 1+00 | 144.10 | 136.61 | 7.5 | | 0+45 4" W 3V9H | 2001-01756 | 2001-01528 | 3252 Forest Lakes | 3243 Forest Lakes | 9-16-01 | 6-21-01 |
| | | 143.70 | 136.84 | 6.9 | 1+76.1 | 4" NW 3V7H | 2001-00573 | | 3256 Forest Lakes | see below | 4-10-00 | |
| LINE 3 | 0+00 L-3 | 142.14 | 134.78 | 7.4 | 0+00 EXIST | | | | | | | |
| | 1+00 | 141.80 | 135.08 | 6.7 | | 0+17 4" NE 3V14H | 2001-00702 | | 3244 Forest Lakes | | 3-16-00 | |
| | | 141.80 | 135.38 | 6.4 | | 0+95 4" NE 3V14H | 2004-00533 | | 3245 Forest Lakes | | 3-2-01 | |
| | 2+00 | 141.80 | 135.51 | 6.7 | 2+43.7 | 1+87 4" NE 3V14H | 2001-01356 | | 3249 Forest Lakes | see below | 6-4-01 | |
| | 3+00 | 141.80 | 135.68 | 6.1 | | 2+90 4" E 3V14H | 2002-02046 | | 3253 Forest Lakes | | 7-21-02 | |
| | 4+00 | 141.80 | 135.98 | 5.8 | | 3+95 4" E 2V14H | | | | | | |
| | | | | | | 4+72 4" E 2V14H | 2001-01666 | | 3261 Forest Lakes | | 6-14-02 | |
| | 5+00 | 142.00 | 136.28 | 5.7 | | 5+15 4" W 3V4H | | | | | | |
| | | | | | | 5+58 4" E 3V14H | | | | | | |
| | 6+00 | 145.20 | 136.59 | 8.6 | 6+02.8 | 8" STUB W 136.69 | | | | | | |
| LATERAL 74, MAIN 17, SANITARY SEWER NO. 22 | | | | | | | | | | | | |
| | 0+00 | 128.34 | 124.84 | 3.5 | 0+00 EXIST | | | | | | | |
| | | 130.33 | 125.06 | 5.3 | 0+72.59 CLEAN OUT RISER W/ DB. WYE | | 2002-00730 | | 1120 W 33rd | | 3-8-02 | |

Line 3-A abandoned by McCullough Exc

abandoned

N/C-2000-00873-3256 N. FOREST LAKES - PADGETT EXC. DID NOT USE RISER - MADE TAP 8' S OF MH 1+76.1 (0+95)
 N/C-2001-01356-3249 N. Forest Lakes - B+L DID NOT USE RISER - Predco 9' SE OF MH 2+43.7 (2+34.1)