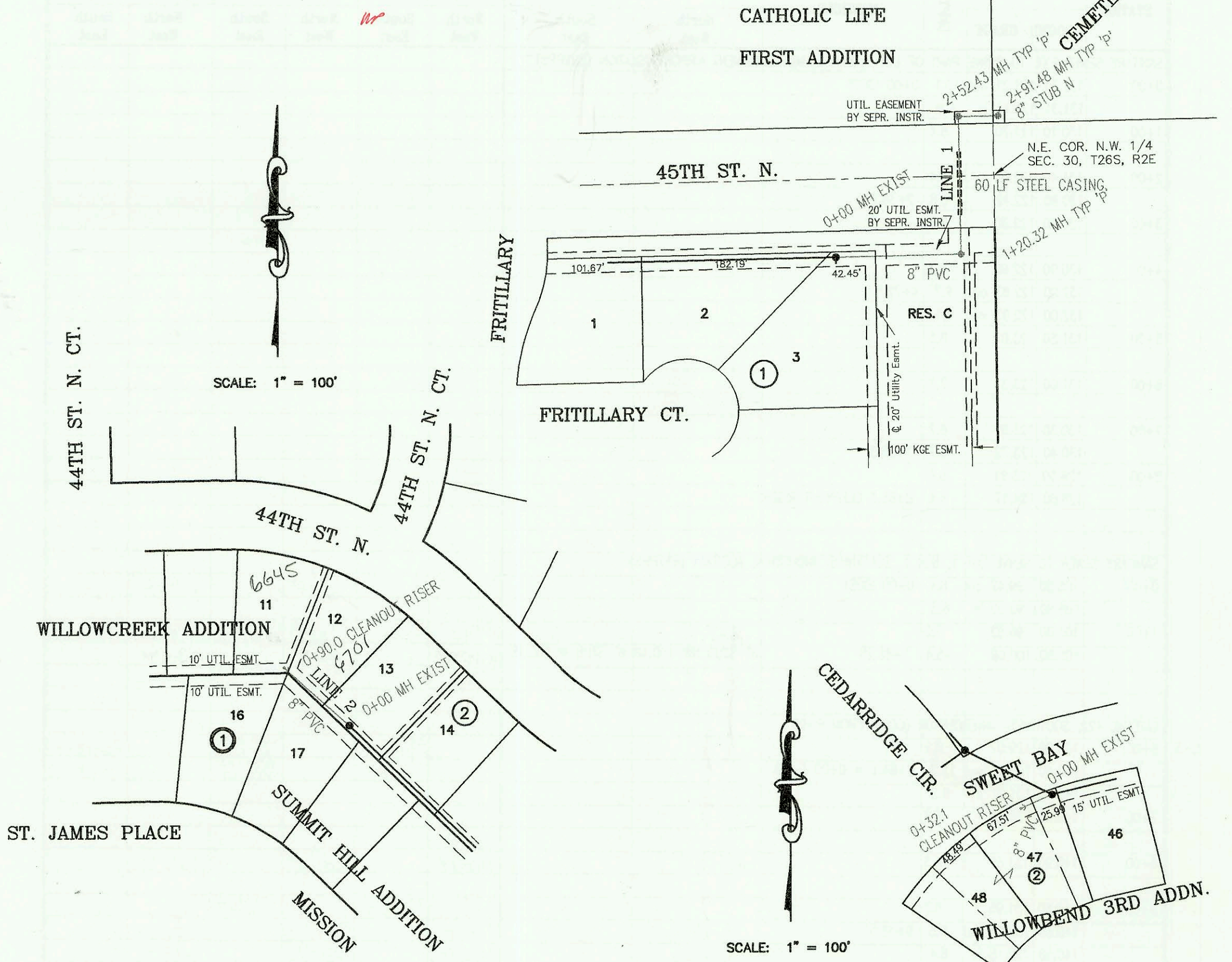


SANITARY SEWER TO SERVE VARIOUS LOCATIONS IN BEL AIRE
 PROJECT NO. 838PPS
 BUILT BY DONDLINGER AND SONS CONSTRUCTION CO.
 BOOKED 8/18/99 PER AS BUILT PLAN

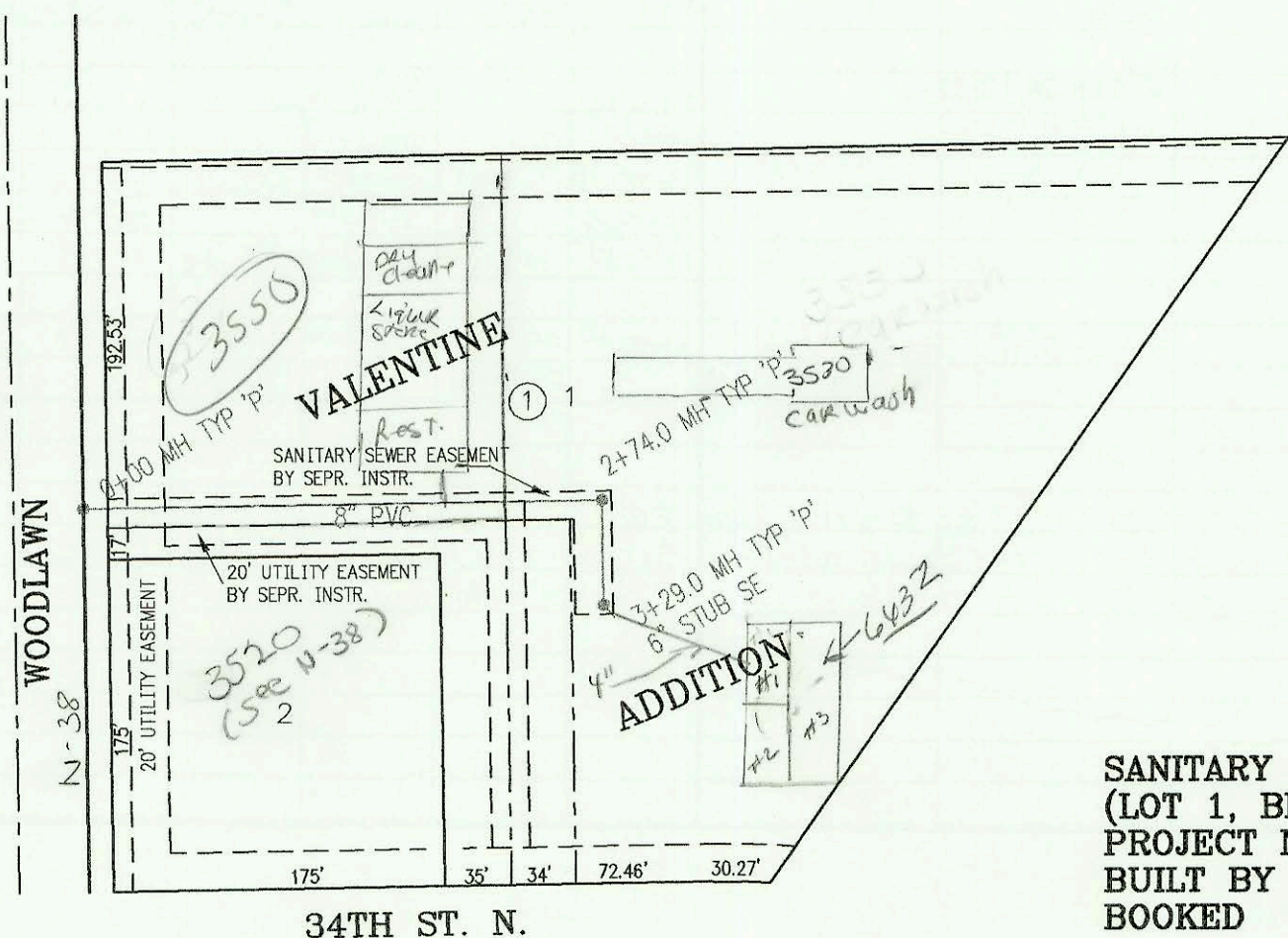


CATHOLIC LIFE
 FIRST ADDITION

ST. JOSEPH
 CEMETERY ADDITION

SANITARY SEWER TO SERVE LOT 47 BLK 2,
 WILLOWBEND 3RD ADDITION
 PROJECT NO. 900PPS
 BUILT BY MIES CONSTRUCTION
 BOOKED 8/19/99 PER AS BUILT PLAN

SCALE: 1" = 100'



SANITARY SEWER TO SERVE SHAMROCK CARWASH
 (LOT 1, BLK 1, VALENTINE ADDITION)
 PROJECT NO. 914PPS
 BUILT BY MCCOULLOUGH EXCAVATION INC.
 BOOKED 8/19/99 PER AS BUILT PLAN

SCALE: 1" = 100'

NO

| CONSTRUCTION RECORD | | | | | | SERVICE RECORD | | | | | | |
|--|-----------|------------|------------|------------|-----------------------|-------------------------------|---------------|------------|--------------|------------|-----------------|------------|
| STATION | ELEVATION | | DEPTH | MANHOLE | 4-INCH "Y" BRANCHES | | No. of Permit | | House Number | | DATE OF PERMITS | |
| | GROUND | GRADE | | | North West | South East | North West | South East | North West | South East | North West | South East |
| SANITARY SEWER FOR VARIOUS LOCATIONS IN BEL AIRE (838PPS) | | | | | | | | | | | | |
| LINE 1 0+00 L-1 | 197.90 | 186.07 out | 11.8 | 0+00 EXIST | | | | | | | | |
| | 197.90 | 186.12 in | 11.8 | | | | | | | | | |
| | 1+00 | 198.20 | 186.43 | 11.8 | | | | | | | | |
| | | 199.14 | 186.50 out | 12.6 | 1+20.32 | | | | | | | |
| | | 199.14 | 186.56 in | 12.6 | | | | | | | | |
| 2+00 | 199.10 | 186.81 | 12.3 | | | | | | | | | |
| | | 200.09 | 186.98 out | 13.1 | 2+52.43 | | | | | | | |
| | | 200.09 | 187.00 in | 13.1 | | | | | | | | |
| | | 200.77 | 187.22 | 13.6 | 2+91.48 | 8" STUB N 187.27 | | | | | | |
| | | | | | | | | | | | | |
| LINE 2 0+00 L-2 | 203.00 | 191.88 out | 11.1 | 0+00 EXIST | | | | | | | | |
| | | 203.00 | 192.34 in | 10.7 | | | | | | | | |
| | | 205.24 | 196.59 | 8.7 | 0+90.0 CLEANOUT RISER | Tied to Leader from 4th Riser | | | | | | |
| | | | | | | | | | | | | |
| SANITARY SEWER TO SERVE LOT 47, BLK 2, WILLOWBEND 3RD ADDITION (900PPS) | | | | | | | | | | | | |
| 0+00 | 191.03 | 178.59 out | 12.4 | 0+00 EXIST | | | | | | | | |
| | | 191.03 | 179.00 in | 12.0 | | | | | | | | |
| | | 191.50 | 179.32 | 12.2 | 0+32.1 CLEANOUT RISER | | | | | | | |
| SANITARY SEWER TO SERVE SHAMROCK CARWASH (LOT 1, BLK1, VALENTINE ADDN.) 914PPS | | | | | | | | | | | | |
| 0+00 | 177.56 | 164.84 out | 12.7 | 0+00 | | | | | | | | |
| | | 177.56 | 165.00 in | 12.6 | | | | | | | | |
| 1+00 | 175.80 | 165.40 | 10.4 | | | | | | | | | |
| 2+00 | 174.90 | 165.80 | 9.1 | | | | | | | | | |
| | | 173.44 | 166.10 out | 7.3 | 2+74.0 | | | | | | | |
| | | 173.44 | 166.20 in | 7.2 | | | | | | | | |
| 3+00 | 173.30 | 166.30 | 7.0 | | | | | | | | | |
| | | 172.88 | 166.42 | 6.5 | 3+29.0 | 6" STUB SE 166.62 | | | | | | |

2002
02495

6701
4115TH

9-11-02

3521

6645 E
44th ST N

5-13-99

2005
01126

3530
W Willowbend

5-12-05

99-122647

3530
W Willowbend

6-10-89

2003
00721

6432
E 34TH

8-24-03

JUL 4+56.40
2+54