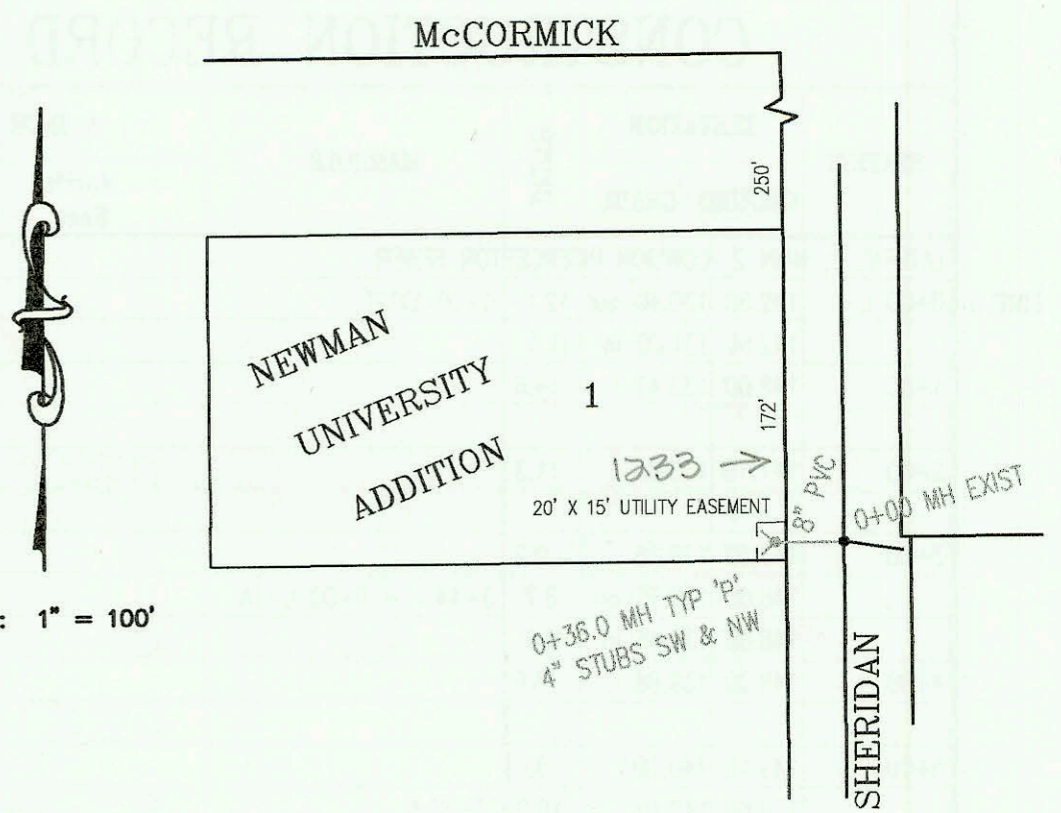


SANITARY SEWER TO SERVE LOT 1,
NEWMAN UNIVERSITY ADDITION
PROJECT NO. 922PPS
BUILT BY MIES CONSTRUCTION CO.
BOOKED 1/26/00 PER AS BUILT PLAN

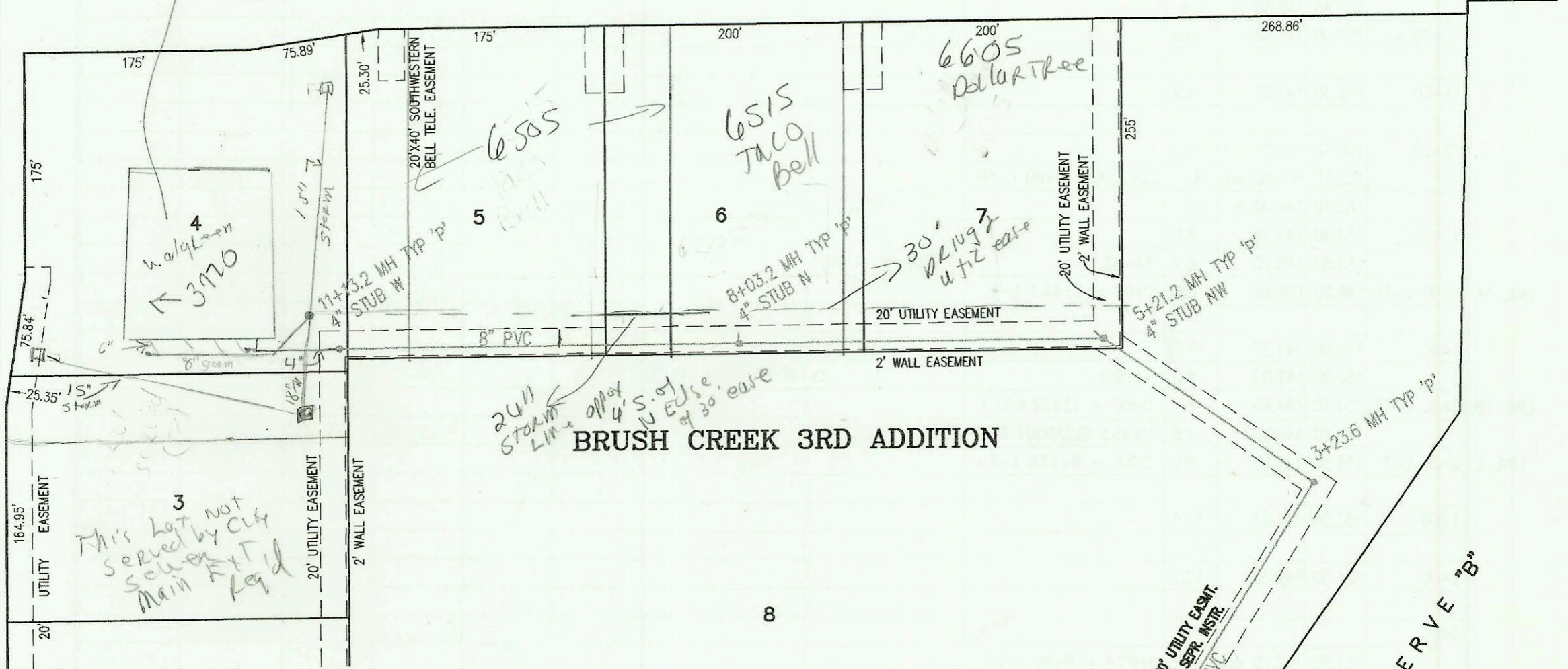


SCALE: 1" = 100'

*3720 Woodlawn
Notify City
at Sewer Maint when
select pelemix is to be
adjusted*

37TH STREET NORTH

WOODLAWN BLVD.



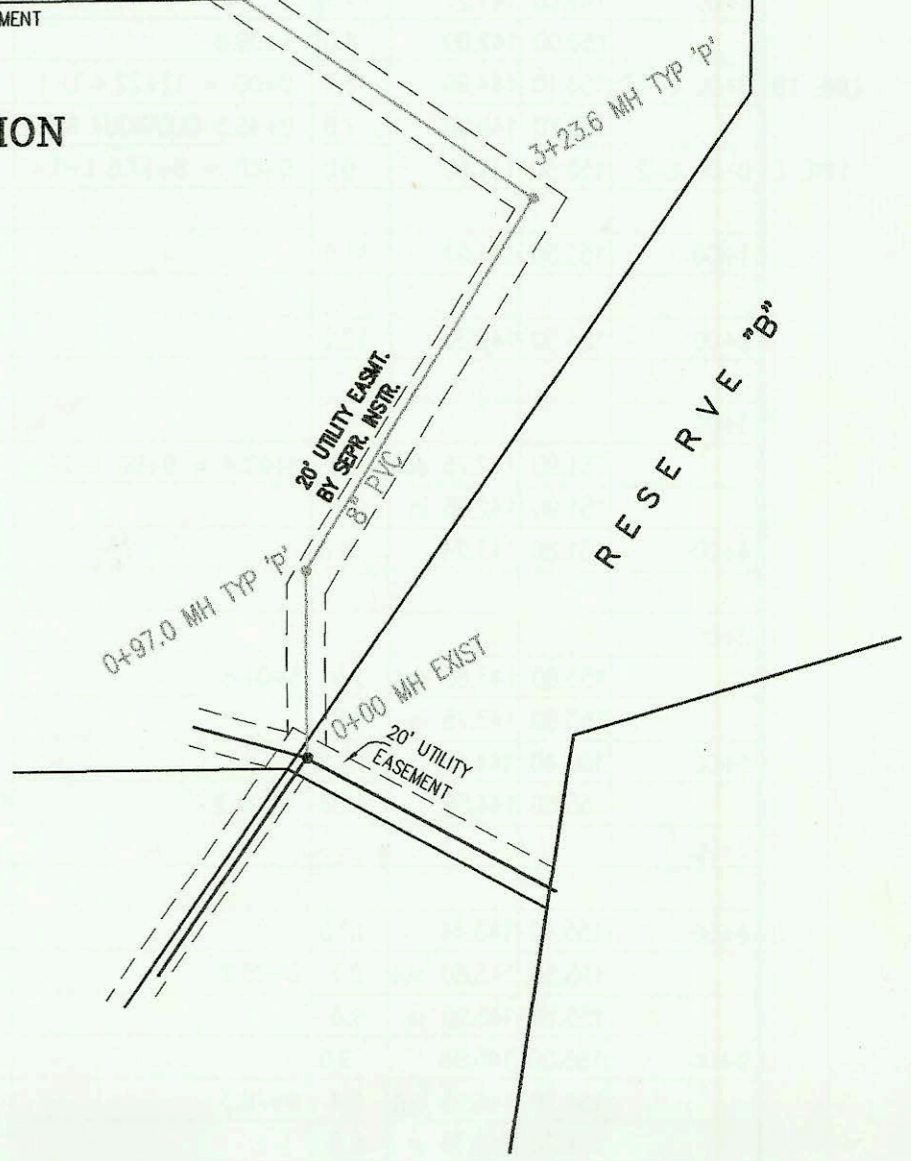
BRUSH CREEK 3RD ADDITION

See P-73

SANITARY SEWER TO SERVE LOTS 3-8,
BRUSH CREEK 3RD ADDITION
PROJECT NO. 916PPS
BUILT BY McCULLOUGH EXCAVATION INC.
BOOKED 02/11/00 PER AS BUILT PLAN



SCALE: 1" = 100'



CONSTRUCTION RECORD						SERVICE RECORD						
STATION	ELEVATION		DEPTH	MANHOLE	4-INCH "Y" BRANCHES		No. of Permit		House Number		DATE OF PERMITS	
	GROUND	GRADE			North West	South East	North West	South East	North West	South East	North West	South East
LATERAL 2, MAIN 2, CSI (CONT.)	FROM	P-104)					2001-02243		13506 W Hayden		9-7-01	
LINE 2 14+00	158.60	150.22	8.4									
	159.30	150.50	8.8	14+16.2	4" STUB NW 150.85		2002-00522		13510 Hayden		2-25-02	
LINE 2A 0+00 L-2A	151.90	142.85	9.1	0+00 = 3+02.4 L-2				2005-00509	518 Sandtrap		3-4-05	
								2008-01366	522 Sandtrap		7-2-03	
1+00	152.80	144.17	8.6				2005-02467	2000-01263	13209 Hayden	606 Sandtrap	10-23-01	5-8-03
	151.90	145.20 out	6.7	1+77.5								
	151.90	145.30 in	6.6									
2+00	151.80	145.71	6.1				2000-01526		13200 W Hayden Ct		6-29-00	
	152.90	146.50	6.4	2+45.5	4" STUB SE 146.85		2003-00749		13202 Hayden		3-24-03	
LINE 3 0+00 L-3	153.80	143.96	9.8	0+00 EXIST			99-01398		13311 HAYDEN		12-6-99	
							2000-00890		13315 HAYDEN		4-12-00	
1+00	152.50	144.42	8.1					2002-00276	13403 Hayden		1-30-02	
2+00	151.80	144.89	6.9									
	152.10	145.00 out	7.1	2+24.4	4" SCH 40 DL TAP		2001-01063		13407 W Hayden		5-1-01	
	152.10	145.10 in	7.0									
3+00	151.00	145.79	5.2				1999-01024		13411 HAYDEN		10-26-99	
4+00	152.60	146.71	5.9				99-01039		13415 Hayden		10-27-99	
								2000-02413	506 S 135th W		11-3-00	
5+00	154.60	147.62	7.0				99-01025		13501 Hayden		10-27-99	
	156.40	148.20	8.2	5+62.8	4" STUB NW 148.55		99-01425		13505 W Hayden		12-9-99	
SANITARY SEWER TO SERVE LOT 1, NEWMAN UNIVERSITY ADDITION												
0+00	111.35	98.96 out	12.4									
	111.35	101.29 in	10.1									
	111.31	101.78	9.5	0+36.0	4" STUB NW 101.83 4" STUB SW 101.88		1999-01035		12335 Sheridan	Maunt Bldg-Ks Newman	10-27-99	
Sanitary Sewer to serve Brush Creek 3rd Addition, lots 3-8, 916PPS												
0+00	173.36	160.94 out	12.4	0+00 EXIST								
	173.36	161.14 in	12.2									
	174.68	162.01 out	12.7	0+97.0								
	174.68	162.08 in	12.6									
1+00												
2+00	175.60	162.89	12.7									
3+00	173.80	163.68	10.1									
	173.62	163.87 out	9.8	3+23.6								
	173.62	164.02 in	9.6									
4+00	176.70	164.79	11.9									
5+00	175.60	165.79	9.8									
	175.15	166.00	9.2	5+21.2	4" STUB NW 166.29		2002-01855		6605 37th		9-3-02	
	175.15	166.05	9.1									
6+00	175.00	166.63	8.4									
7+00	175.00	167.36	7.6									
8+00	186.83*	168.11	8.74*	8+03.2					6515			
	175.09	168.11	7.0									
9+00	176.00	168.71	7.3				2002-00719		6505 37th		3-15-02	
10+00	176.90	169.34	7.6									
11+00	177.90	169.96	7.9									
	177.88	170.04	7.8	11+13.2	4" STUB W 170.38		2001-00765		3770 Winkler		4-5-01	

* SS MH Adjusted w/ 1259 PPS 3/05