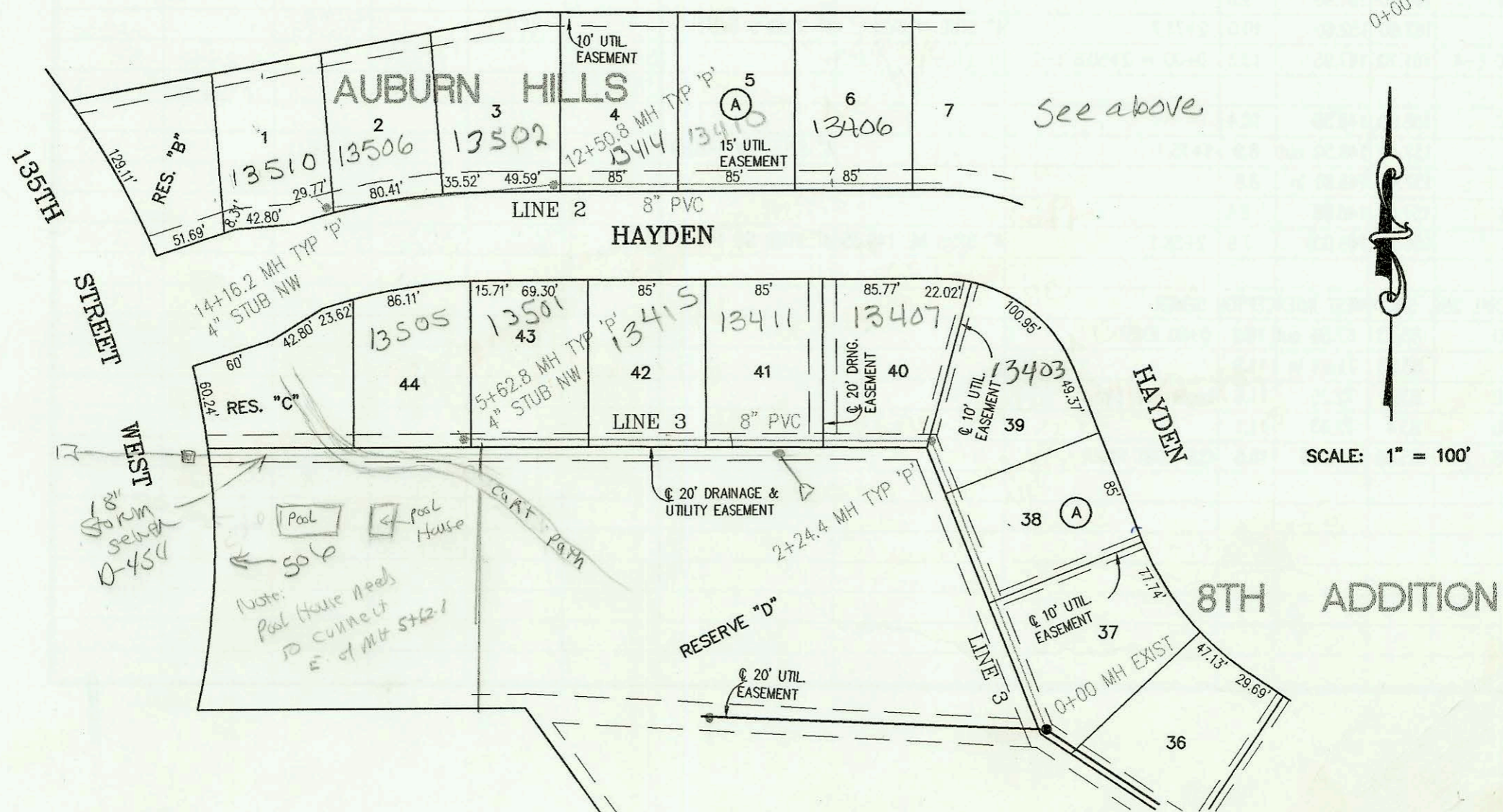


LATERAL 2, MAIN 2, COWSKIN INTERCEPTOR SEWER
 PROJECT NO. 468-82954 (743788)
 BUILT BY NOWAK CONSTRUCTION CO.
 BOOKED 10/27/99 PER PLAN



CONSTRUCTION RECORD						SERVICE RECORD						
STATION	ELEVATION		DEPTH	MANHOLE	4-INCH "Y" BRANCHES		No. of Permit		House Number		DATE OF PERMITS	
	GROUND	GRADE			North West	South East	North West	South East	North West	South East	North West	South East
LINE 1	LATERAL 2, MAIN 2, COWSKIN INTERCEPTOR SEWER											
	0+00 L-1	142.50	130.40 out	12.1	0+00 EXIST							
		142.50	131.00 in	11.5								
	1+00	148.00	133.43	14.6								
								2003-				
	2+00	147.10	135.85	11.3		4" SCH 40 2+30.1		1999- 01397	13102 HAYDEN		12-22-99	
	3+00	147.50	138.28	9.2								
		148.00	139.35 out	8.7	3+44.1 = 0+00 L-1A							
		148.00	139.45 in	8.6								
	4+00	148.30	139.68	8.6		4" SCH 40 5+33.6		99-01408	605 S. Sandtrap		12-7-99	
	5+00	149.10	140.10	9.0								
		150.60	140.40	10.2	5+70.6	4" SCH 40 DL 6+10.1 TAP		2000- 02001	601 S. Sandtrap		9-21-00	
	6+00	150.20	140.52	9.7								
7+00	150.60	140.92	9.7		4" SCH 40 DL 6+29.6 TAP		2001- 00358	549 Sandtrap		3-15-01		
8+00	150.10	141.33	8.8				2003- 01086	546 Sandtrap		4-22-03		
	150.50	141.40 out	9.1	8+17.6 = 0+00 L-2								
	150.50	141.50 in	9.0				2001- 03239	541 Sandtrap		12-19-01		
9+00	150.40	142.18	8.2									
	151.20	142.70 out	8.5	9+62.7	4" SCH 40 DL 9+36.7 TAP		2001- 00925	537 S Sandtrap		4-17-01		
	151.20	142.80 in	8.4									
10+00	151.00	142.96	8.0		4" SCH 40 DL 10+29.7 TAP		2000- 01658	533 S Sandtrap	929 Sandtrap	7-19-00	32008	
11+00	152.30	143.38	8.9									
12+00	152.10	143.81	8.3									
	153.10	143.90 out	9.2	12+22.4 = 0+00 L-1B								
	153.10	144.00 in	9.1		4" SCH 40 12+30.4		99-01291	521 Sandtrap		11-22-99		
13+00	153.40	144.78	8.6		4" SCH 40 12+60.9		2000- 01913	517 Sandtrap		3-2-00		
	153.80	145.10	8.7	13+32.3	4" STUB W 145.45		2001- 02293	513 Sandtrap		9-13-01		
LINE 1A	0+00 L-1A	148.00	139.45	8.6	0+00 = 3+44.1 L-1	4" SCH 40 0+62	2000- 01143	609 S Sandtrap	1211 Hayden	5-8-00	617-03	
1+00	149.00	141.27	7.7									
	150.00	142.00	8.0	1+39.8	← 4" STUB SW 142.35		2001- 01302	623 Sandtrap		5-24-01		
LINE 1B	0+00 L-1B	153.10	144.60	8.5	0+00 = 12+22.4 L-1							
	152.80	145.00	7.8	0+45.5 CLEANOUT RISER	4" SCH 40 CORISER 8x4 W/PE		2000- 00099	525 Sandtrap		1-9-01		
LINE 2	0+00 L-2	150.50	141.50	9.0	0+00 = 8+17.6 L-1							
1+00	153.50	141.91	11.6									
2+00	154.50	142.33	12.2									
						2+70.9 4" SCH 40		2005- 00307	518 Sandtrap		4-1-05	
3+00							2002- 01189	514 Sandtrap		4-24-02		
	151.90	142.75 out	9.2	3+02.4 = 0+00 L-2A								
	151.90	142.85 in	9.1				2003- 02910	510 Sandtrap	1341 Hayden	11-10-03	1212-01	
4+00	151.80	143.24	8.6									
							2002- 01322	506 Sandtrap		5-9-02		
5+00												
	153.60	143.65 out	9.9	5+01.8	4" SCH 40 5+28.8		99-01407	2002- 00122	13222 Hayden	13218 Hayden	12-7-99	1-14-02
	153.60	143.75 in	9.8									
6+00	156.40	144.15	12.3									
	155.50	144.55	11.0	6+97.2	4" STUB N 144.90		2001- 02301	509 S Sandtrap		9-13-01		
7+00												
8+00	155.40	145.44	10.0		4" SCH 40 8+32 Saddle		2000- 02625	508 Sandtrap		11-30-00		
	155.50	145.80 out	9.7	8+85.2			2001- 00162	501 Sandtrap		1-24-01		
	155.50	145.90 in	9.6									
9+00	155.00	145.96	9.0		4" SCH 40 DL 9+54.3 TAP		2000- 02779	13402 Hayden		12-22-00		
	154.70	146.25 out	8.4	9+70.3								
	154.70	146.35 in	8.3		4" SCH 40 DL 10+30.8 TAP		2001- 00424	13406 Hayden		2-27-01		
10+00	154.10	146.47	7.6									
							2000- 02492	13410 Hayden		10-8-01		
11+00	154.30	146.88	7.4									
12+00	155.70	147.29	8.4									
	156.80	147.50 out	9.3	12+50.8			2001- 02873	13414 Hayden		9-11-01		
	156.80	147.60 in	9.2									
13+00	157.10	148.46	8.6				2001- 02901	13502 Hayden		11-14-01		