

County

LATERAL 430, SOUTHWEST INTERCEPTOR SEWER
PROJECT NO. 468-82996 (743802)
BUILT BY W. B. CARTER CONSTRUCTION CO.
BOOKED 11/22/99 PER PLAN

CHARLES

55th ST. S.

0+00 MH EXIST.
STRUCTURAL TEE MH.

60" RCP SANITARY SEWER

NW COR. NE 1/4
SEC 30, T28S, R1E

20' X 30' UTILITY EASEMENT
BY SEPERATE INSTRUMENT

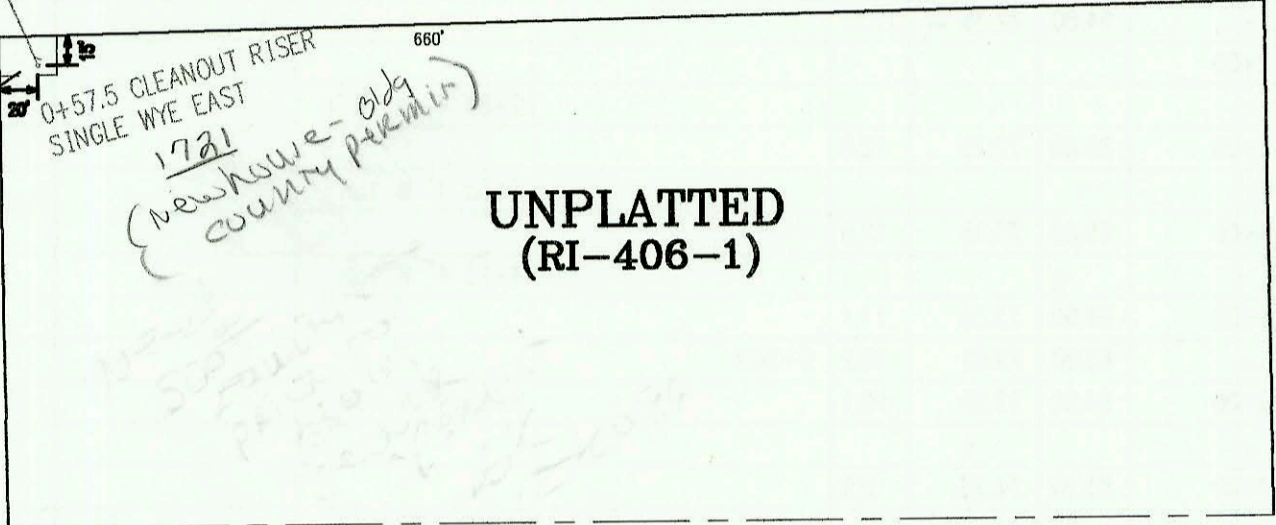
0+57.5 CLEANOUT RISER
SINGLE WYE EAST

*1781
(Newhouse - old
county permit)*

UNPLATTED
(RI-406-1)



SCALE: 1" = 100'



CONSTRUCTION RECORD					SERVICE RECORD							
STATION	ELEVATION		DEPTH	MANHOLE	4-INCH "Y" BRANCHES		No. of Permit		House Number		DATE OF PERMITS	
	GROUND	GRADE			North West	South East	North West	South East	North West	South East	North West	South East
LATERAL 404, SOUTHWEST INTERCEPTOR SEWER (CONT. FROM P-108)												
LINE 2	13+00	82.60	77.03	5.6						5416 VINE		8-20-02
					4" SCH 40 DL TAP			2001-00043		5412 VINE		1-8-01
	14+00	83.00	77.43	5.6				2001-00018		5408 VINE		1-11-02
	15+00	83.30	77.83	5.5								
		83.70	77.98	5.7	15+37.0	4" STUB NE 78.31						
LINE 2A	0+00 L-2A	83.80	72.90	10.9	0+00 = 1+49.0 L-2							
	1+00	84.70	73.50	11.2		1+02 4" W 10H	1+07 4" E 13H					
	2+00	87.00	74.10	12.9								
	3+00	86.40	74.70	11.7								
		86.20	75.13	11.1	3+71.0	4" SCH 40 DL TAP		2000-02278		5507 S. Glenn		10-12-00
	4+00	85.50	75.30	10.2								
	5+00	84.70	75.91	8.8								
	6+00	84.30	76.51	7.8		4" SCH 40 - TAP		2000-00725		5421 Charles		3-20-00
		84.90	76.92	8.0	6+68.0	4" SCH 40 - TAP		2000-01104		5420 Charles		4-26-00
	7+00	84.60	77.11	7.5								
						4" SCH 40		2004-01102		5419 S. Glenn		
	8+00	85.00	77.72	7.3		8+53 4" SCH 40		2000-02194		5416 Charles		9-5-00
	9+00	85.50	78.32	7.2				2003-01404		5411 Glenn		5-21-03
		85.10	78.71	6.4	9+65.0	4" STUB NW 79.04	4" STUB NE 79.04					
LINE 2B	0+00 L-2B	83.00	73.62	9.4	0+00 = 3+53.0 L-2							
	1+00	83.70	74.02	9.7		0+98 4" W 13H	1+03 4" W 8H	2001-00040		5523 VINE		1-8-01
	2+00	85.90	74.42	11.5								
	3+00	86.20	74.82	11.4				2001-02072		5515 S. VINE		8-20-01
		85.60	74.91	10.7	3+22.0	4" SCH 40 DL TAP	4" SCH 40 DL TAP	2001-01812	2000-02559	5510 S. Glenn	5511 S. VINE	7-20-01 11-21-00
	4+00	85.50	75.22	10.3		4" SCH 40		1999-01296		5506 S. Glenn		11-24-99
	5+00	84.50	75.63	8.9		5+22 4" SCH 40		2000-02860		5502 S. Glenn		11-9-00
	6+00	84.00	76.03	8.0								
		84.50	76.23	8.3	6+50.0	4" SCH 40 DL TAP		2001-00607		5421 VINE		3-20-01
	7+00	84.40	76.43	8.0								
						4" SCH 40 Saddle		2001-00826		5417 VINE		4-9-01
	8+00	84.70	76.83	7.9								
						4" SCH 40 Tap		2000-01103		5415 Glenn		4-26-01 11-23-99
	9+00	85.00	77.23	7.8		4" SCH 40 Saddle	4" SCH 40	2001-00827	99-01298	5410 S. Glenn	5409 VINE	4-9-01 11-23-99
		85.70	77.51	8.2	9+70.0	4" STUB NW 77.84	4" STUB NE 77.84					
LATERAL 21, MAIN 13, SOUTHWEST INTERCEPTOR (CONT. FROM P-109)												
LINE 3A	3+00	145.00	138.43	6.6				2000-00006		2315 CARDINGTON		1-4-2000
		145.40	138.70	6.7	3+61.1	4" STUB SE 139.02		99-01290		2311 CARDINGTON		11-22-99
LINE 4	0+00 L-4	145.70	135.02 out	10.7	0+00 = 0+00 L-2	4" SCH 40 Saddle		2001-00565		2350 CARDINGTON		3-15-01
		145.70	135.27 in	10.4			0+25 4" NE 6V17H			2217		
	1+00	144.70	136.25	8.4			1+11 4" NE 5V16H	2001-01819		2301 COVINGTON		6-28-02
							1+80 4" NE 4V15H	2003-01222		2305 COVINGTON		5-7-03
	2+00	144.50	137.23	7.3		4" SCH 40 DL TAP		2000-01941		2310 S. CARDINGTON		8-31-00
		144.70	137.30 out	7.4	2+07.1	4" SCH 40 DL TAP		2000-02348		2314 CARDINGTON		10-26-00
		144.70	137.40 in	7.3			2+38 4" E 3V15H	2002-02104		2309 COVINGTON		11-14-02
	3+00	145.20	137.87	7.3		4" SCH 40	3+13 4" E 3V15H	2000-00342		2318 CARDINGTON	2313 COVINGTON	2-7-00 5-15-03
	4+00	144.80	138.38	6.4				2002-00523	2003-01323	2322 CARDINGTON	2317 COVINGTON	2-25-02 5-15-03
								2002-00317		2316 CARDINGTON		5-8-02
	5+00	145.80	138.89	6.9				2001-02222		2321 S. COVINGTON		9-6-01
		146.40	139.00	7.4	5+21.0	4" STUB SW 139.33	4" STUB SE 139.33	2003-01223	2001-02223	2330 CARDINGTON	2325 S. COVINGTON	4-7-03 9-6-01
LATERAL 430, SOUTHWEST INTERCEPTOR												
	0+00	85.10	68.99 out	16.1	0+00 EXIST							
		85.10	74.49 in	10.6								
		84.07	74.72	9.35	0+57.5 CLEANOUT RISER	4" WYE E. 4" SCH 40		99-01493		1721 W. 55th S		12-20-91