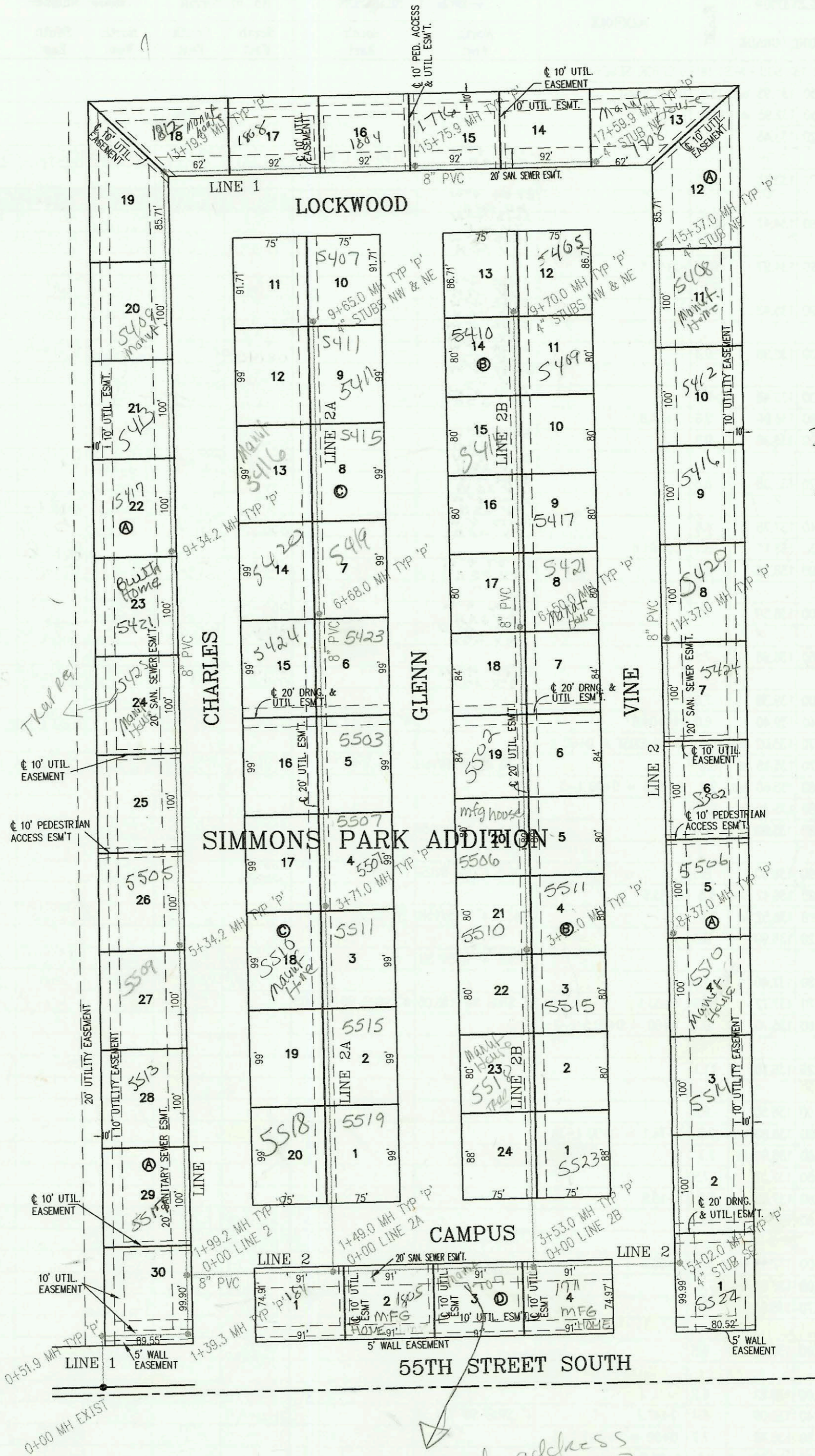


LATERAL 404, SOUTHWEST INTERCEPTOR SEWER  
PROJECT NO. 468-82864 (743773)  
BUILT BY UTILITY CONTRACTORS INC.  
BOOKED 11/1/99 PER PLAN



SCALE: 1" = 100'

*IF Mfg House  
Bldg TRAP  
Key'd  
11-22-99  
BL*

*need address  
chg to 1717  
BL*

CONSTRUCTION RECORD						SERVICE RECORD						
STATION	ELEVATION		DEPTH	MANHOLE	4-INCH "Y" BRANCHES		No. of Permit		House Number		DATE OF PERMITS	
	GROUND	GRADE			North West	South East	North West	South East	North West	South East	North West	South East
LATERAL 404, SOUTHWEST INTERCEPTOR SEWER												
LINE 1	0+00 L-1	84.90	68.99 out	15.9	0+00 EXIST							
		84.90	71.53 in	13.4								
		85.40	71.64 out	13.8	0+51.9							
		85.40	71.81 in	13.6								
	1+00	85.00	71.90	13.1		0+82 4" N 13.5H						
		85.40	71.97 out	13.4	1+39.3							
		85.40	72.07 in	13.3								
		84.80	72.18 out	12.6	1+99.2 = 0+00 L-2							
		84.80	72.35 in	12.5								
	2+00					2+63 4" W 13.5H						
	3+00	85.60	72.75	12.9		3+63 4" W 15H	99-01295		5513 Charles		11-22-99	
	4+00	85.60	73.15	12.5		4+63 4" W 15H						
	5+00	84.90	73.55	11.4								
		83.90	73.69	10.2	5+34.2							
	6+00	84.00	73.95	10.1		5+63 4" W 13H	2002-01547		5505 S Charles		5-31-02	
	7+00	83.20	74.35	8.9		7+46 4" S 10	2005-01603		5485 Charles		6-29-05	
	8+00	82.70	74.75	8.0								
	9+00	83.10	75.15	7.9		4" SCH 40 8+70.2 TAP	2004-02063		5421 S Charles		8-12-04	
		83.60	75.29	8.3	9+34.2	4" SCH 40 DL 9+53.2 TAP	2001-01183		5417 Charles		5-17-01	
	10+00	83.50	75.55	8.0		4" SCH 40 DL 10+55.2 TAP	2003-02393		5413 Charles		9-22-03	
	11+00	84.00	75.96	8.0		4" SCH 40 DL 11+65.9 TAP	2006-01491		5409 Charles		6-4-06	
	12+00	84.30	76.36	7.9								
	13+00	84.60	76.76	7.8								
		85.00	76.84	8.2	13+19.9	4" SCH 40 13+36.9 TAP	2000-01225		1812 Lockwood		5-18-00	
	14+00	84.80	77.16	7.6		4" SCH 40 14+51.9 TAP	99-01469		1805 Lockwood		12-15-99	
	15+00	84.50	77.56	6.9		4" SCH 40 15+41.9 TAP	99-01299		1804 Lockwood		11-23-99	
		84.60	77.87	6.7	15+75.9	4" SCH 40 DL 16+23.9 TAP	2000-02557		1716 Lockwood		11-21-00	
	16+00	84.20	77.97	6.2								
	17+00	84.00	78.37	5.6								
		84.20	78.61	5.6	17+59.9	4" SUTB NE 78.94	001-00606		1708 Lockwood		3-20-01	
LINE 2	0+00 L-2	85.60	72.35	13.3	0+00 = 1+99.2 L-1							
	1+00	84.70	72.65	12.1		0+99 4" S 13H	2003-00590					
		83.80	72.80 out	11.0	1+49.0 = 0+00 L-2A							
		83.80	72.90 in	10.9								
	2+00	83.40	73.06	10.3		1+90 4" S 14H	2000-05730		1805 Campus		3-20-00	
	3+00	82.80	73.36	9.4		2+81 4" S 15H	2000-01607		1707(1717) Campus		7-12-00	
		83.00	73.52 out	9.5	3+53.0 = 0+00 L-2B							
		83.00	73.62 in	9.4								
	4+00	83.10	73.76	9.3		3+73 4" S 15H	2000-05731		1711 Campus		3-20-00	
	5+00											
		83.60	74.07 out	9.5	5+02.0	4" STUB SE 74.40						
		83.60	74.17 in	9.4		4" SCH 40 DL 5+06 TAP	2001-00044		5522 S VINE		1-8-01	
	6+00	82.90	74.47	8.4		4" SCH 40 DL 6+86 TAP	2001-01515		5514 VINE		6-29-01	
	7+00	83.20	74.77	8.4								
	8+00	83.50	75.07	8.4		4" SCH 40 DL 7+89.5 TAP	2001-01695		5506 VINE		6-29-01	
		83.90	75.18	8.7	8+37.0							
	9+00	83.20	75.43	7.8								
	10+00	82.40	75.83	6.6		4" SCH 40 DL 9+56 TAP	2001-01134		5502 VINE		5-9-01	
	11+00	82.00	76.23	5.8		4" SCH 40 DL 10+79 TAP	2000-02558		5434 VINE		11-21-00	
		82.30	76.38	5.9	11+37.0							
	12+00	82.30	76.63	5.7								
CONT. ON P-107												