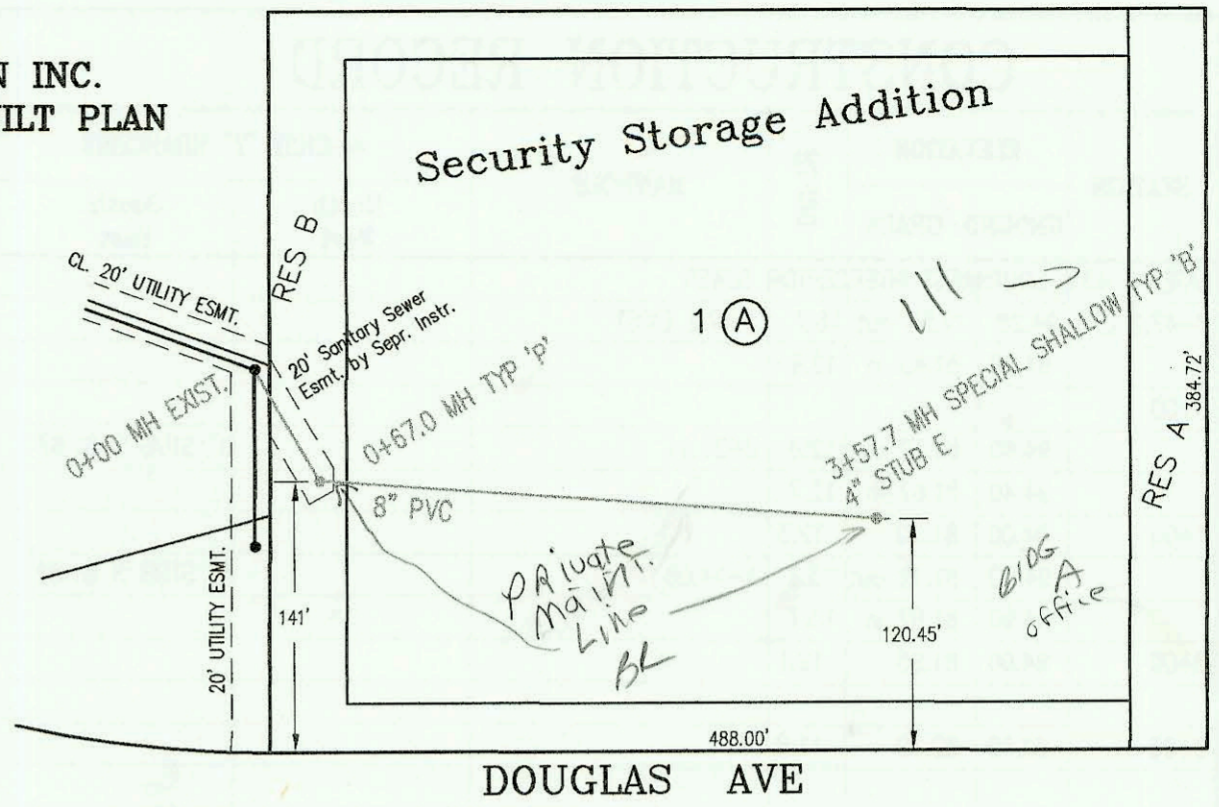
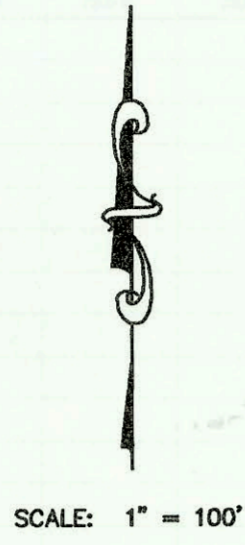
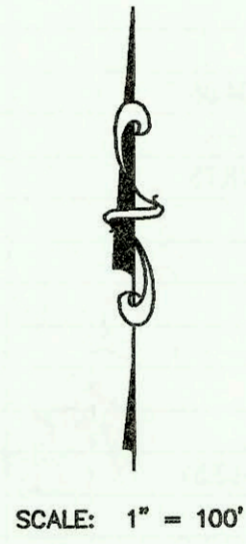
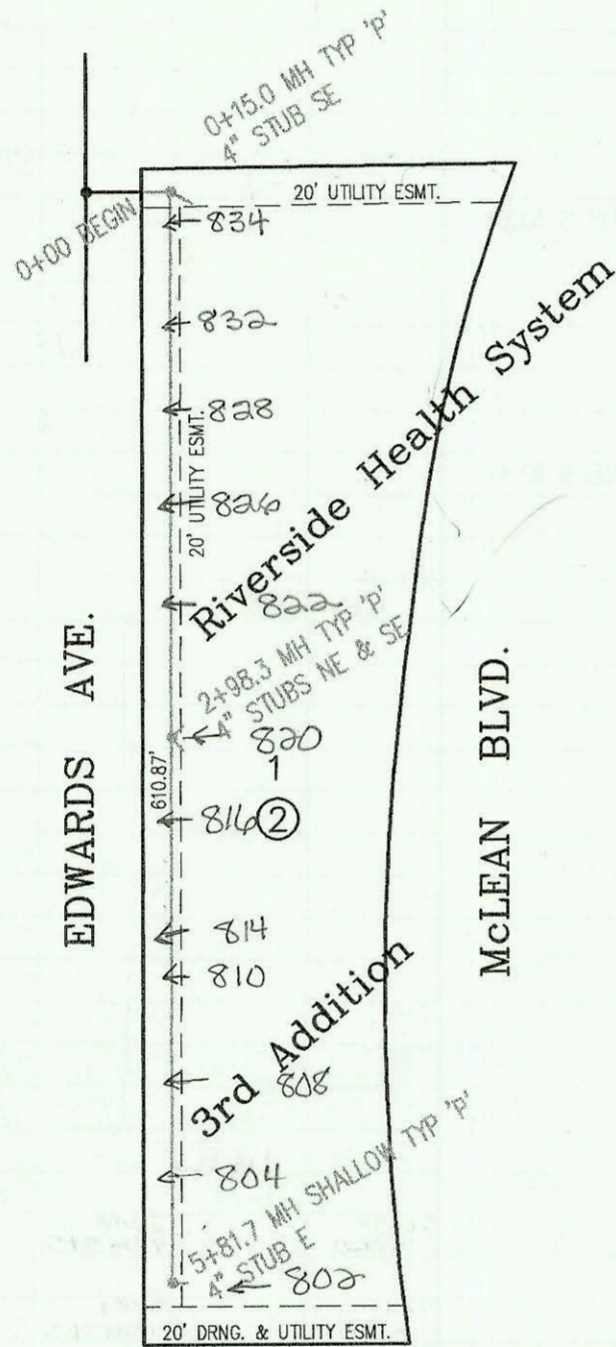


SANITARY SEWER TO SERVE LOT 1,
 SECURITY STORAGE ADDITION
 PROJECT NO. 929PPS
 BUILT BY McCULLOUGH EXCAVATION INC.
 BOOKED 02/11/00 PER AS BUILT PLAN

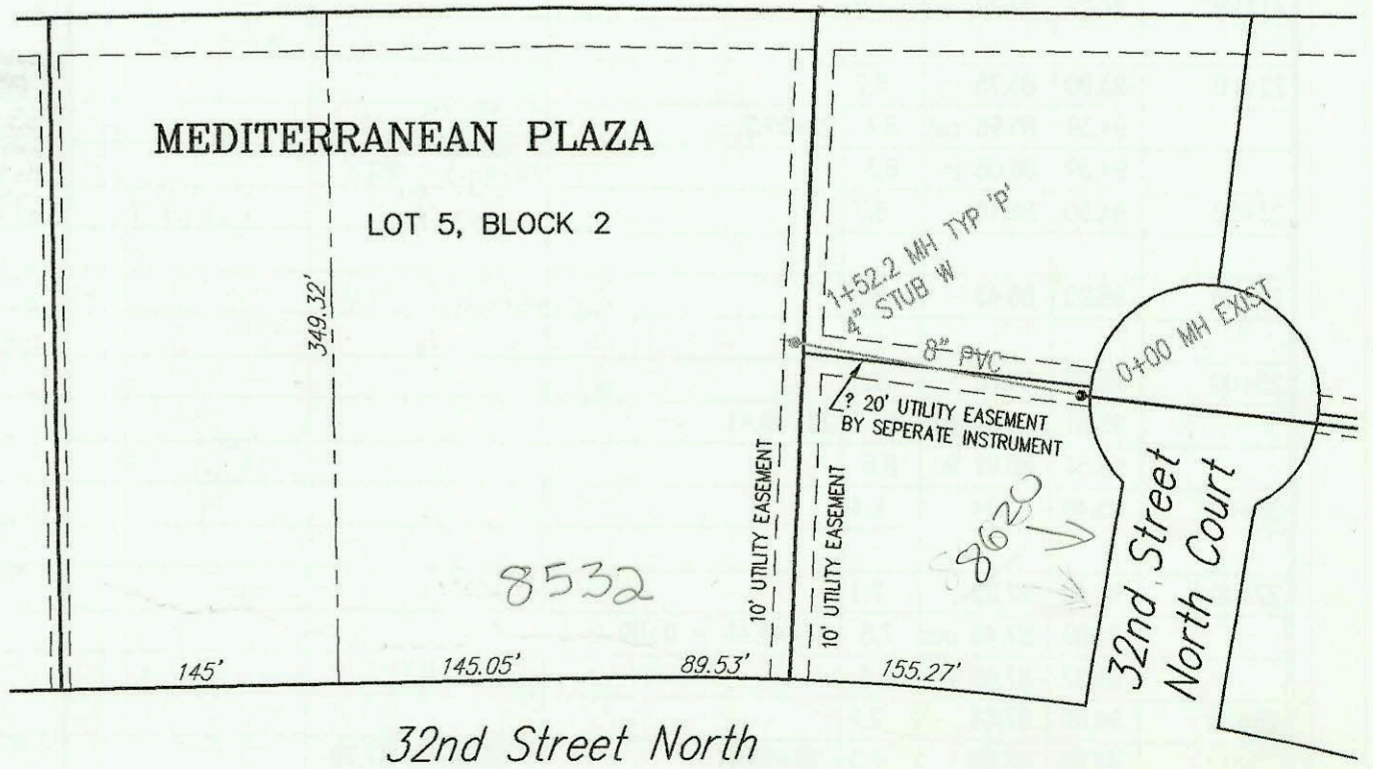
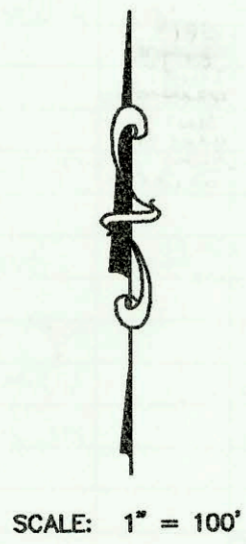


MAIZE ROAD

SANITARY SEWER TO SERVE LOT 1, BLK. 2,
 RIVERSIDE HEALTH SYSTEM 3RD ADDITION
 PROJECT NO. 952PPS
 BUILT BY McCULLOUGH EXCAVATION INC.
 BOOKED 02/11/00 PER AS BUILT PLAN



K-96 Highway



LATERAL 77, MAIN 22, WAR INDUSTRIES SEWER
 PROJECT NO. 468-83017 (743806)
 BUILT BY MIES CONSTRUCTION CO.
 BOOKED 2/11/00 PER PLAN

CONSTRUCTION RECORD					SERVICE RECORD							
STATION	ELEVATION		DEPTH	MANHOLE	4-INCH "Y" BRANCHES		No. of Permit		House Number		DATE OF PERMITS	
	GROUND	GRADE			North West	South East	North West	South East	North West	South East	North West	South East
LAT 431, SWI (CONT. FROM P-112)												
0+00 L-2	94.50	85.05	9.5	0+00 = 18+87.8 L-1								
1+00	92.00	85.30	6.7									
2+00	92.00	85.55	6.5									
	93.64	85.76 out	7.9	2+82.28		4" STUB S 85.86		2002-01942		2620 W 44th St S		7-16-02
	93.64	85.86 in	7.8					2001-03173		44th St S		12-13-01
3+00	93.80	85.90	7.9		4" SCH 40 3+47.32 DL TAP		2001-00007		4423 Richmond St		1-11-01	
	94.56	86.08 out	8.5	3+73.32				2001-02677		2604 W 44th St S		10-24-01
	94.56	86.18 in	8.4									
4+00	94.80	86.25	8.6									
5+00	95.80	86.50	9.3		4" SCH 40 5+33.72 DL TAP		2001-01136	2002-05799	4431 Richmond St	2608 W 44th St	5-9-01	3-21-02
6+00	95.30	86.75	8.6		4" SCH 40 5+72.35 DL TAP		2001-01231	2001-02679	4435 Richmond St	4424 S Richmond	5-18-01	10-24-01
7+00	95.09	87.00 out	8.1	7+00.35 = 0+00 L-4								
	95.09	87.10 in	8.0					2002-00782		4420 Richmond		3-20-02
8+00	95.60	87.35	8.3					2002-02734		4412 Richmond		11-4-02
	95.90	87.59	8.3	8+94.35		4" STUB NE 87.69		2004-02023		4412 Richmond		7-23-04
0+00 L-3	94.87	87.50	7.4	0+00 = 27+43.41 L-1								
1+00	95.10	87.75	7.3		4" SCH 40 1+40.42 4" SCH 40 2+11.42		2000-01471 2000-01306		2514 W 43rd St below		6-20-00	5-30-00
2+00	95.50	88.00	7.5		4" SCH 40 2+44.42		2000-01309 2001-01803		2608 W 43rd St		5-30-00	7-19-01
	95.79	88.20 out	7.6	2+80.00								
	95.79	88.30 in	7.5									
3+00	95.90	88.35	7.6									
	96.09	88.51	7.6	3+62.42	4" SCH 40	4" STUB NW 88.61	2000-02658		2616 W 43rd St		12-15-00	
0+00 L-4	95.09	87.10	8.0	0+00 = 7+00.35 L-2								
	94.94	87.17	7.8	0+26.00		4" STUB SE 87.27		2003-01245		4428 Richmond		5-7-03
Sanitary Sewer to serve Security Storage Addition, lot 1, 992PPS												
0+00	139.90	132.17	7.7	0+00 EXIST								
	139.80	132.60 out	7.2	0+67.0								
	139.80	132.66 in	7.1									
1+00	139.80	132.82	7.0									
2+00	138.00	133.32	4.7									
3+00	137.80	133.81	4.0									
	136.75	134.10	2.7	3+57.7		4" SCH 40 4" STUB E 134.10	2000-00631		1115 Main St		3-9-00	
Sanitary Sewer Riverside Health System 3rd Addition, lot 1, blk 2, 952PPS												
0+00	115.70	106.61	9.1		4" SCH 40 0+31.9		2000-00328 2000-00327		834 N Edwards		2-22-00	
	116.12	106.67	9.5	0+15.0	4" SCH 40 1+26.4	4" STUB SE 106.92	2000-00326 2000-00325		832 N Edwards 828 N Edwards		2-25-00 3-8-00	
1+00	116.70	107.29	9.4		4" SCH 40 1+82.3		2000-00324 2000-00323		826 N Edwards 822 N Edwards		3-8-00 4-10-00	
	116.00	108.02	8.0		4" SCH 40 2+28							
	116.69	108.73	8.0	2+98.3	4" SCH 40 2+95.0	4" STUB NE 109.0 4" STUB SE 109.04			820 N Edwards		4-10-00	
3+00					4" SCH 40 3+41.0		2000-00322 2000-00321		816 N Edwards 814 N Edwards		4-11-00	
					4" SCH 40 3+98.0							
4+00	116.50	109.47	7.0		4" SCH 40 4+25.7		2000-00320 2000-00319		810 N Edwards 808 N Edwards		2-22-00	
					4" SCH 40 4+77.7							
5+00	116.60	110.20	6.4		4" SCH 40 5+22.9		2000-00318 2000-00317		804 N Edwards 802 N Edwards		2-22-00	
	116.20	110.80	5.4	5+81.7	4" SCH 40 5+12.1	4" STUB E 111.03					2-22-00	
LATERAL 77, MAIN 22, WAR INDUSTRIES SEWER												
0+00	228.91	221.44 out	7.5	0+00 EXIST								
	228.91	221.60 in	7.3					2004-01		8532 E 32nd N		6-22-04
1+00	230.80	222.00	8.8									
	231.70	222.21	9.5	1+52.2	4" SCH 40	4" STUB W 222.75	1999-00698				9-17-99	

NOTE 2000-01471-2514 W 43rd St S-7/19/00-McCullough-DL replaced 2 1/2' section of main