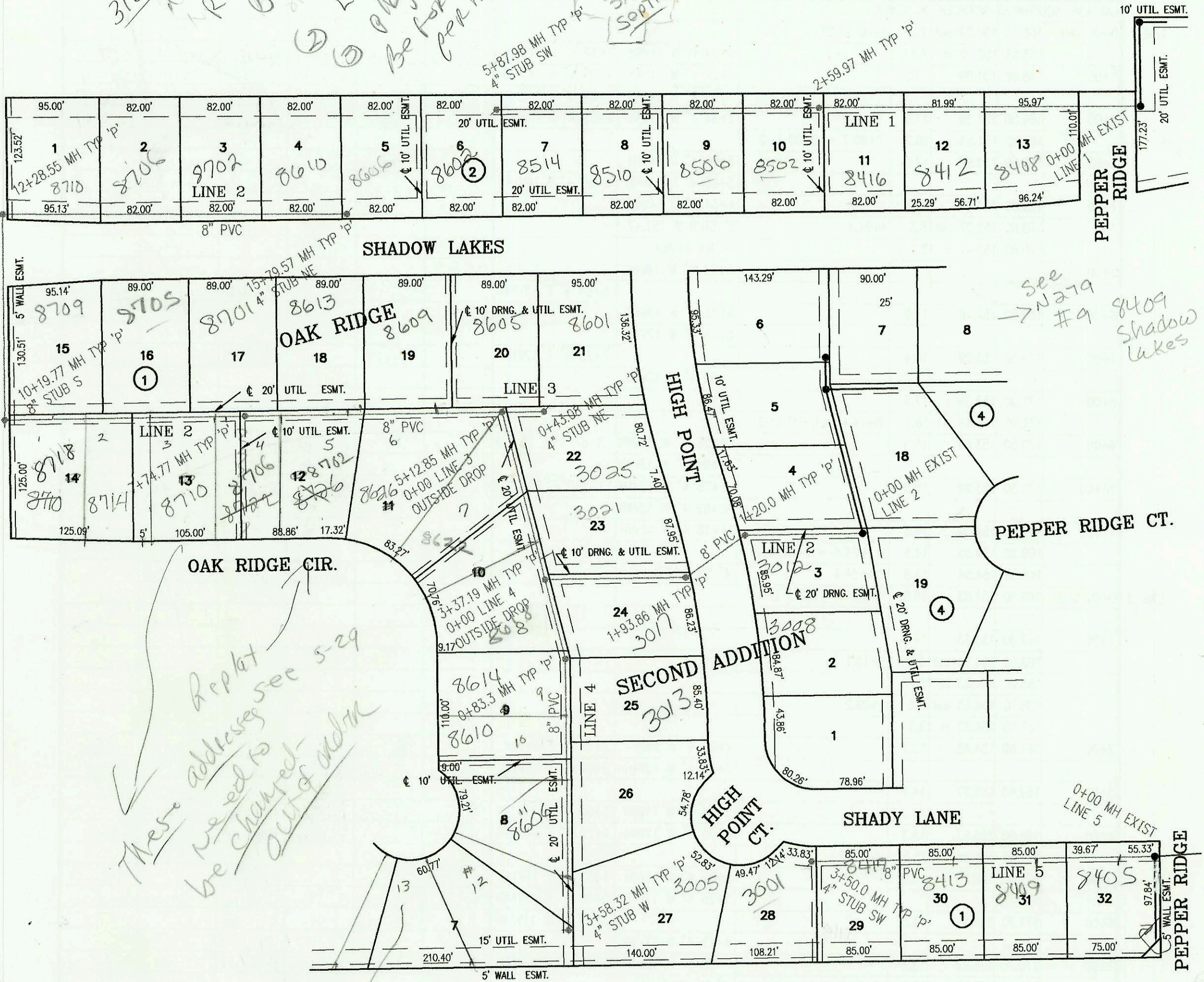


3130 Tyler  
 Not in BID  
 Require following  
 1) Fee in Lieu of Main  
 2) Equity fee paid  
 3) Play inspected  
 Be fore issuing a sewer permit  
 8/13/02 BSK



These addresses see 5-29  
 be changed  
 out of admin

See N279 #9  
 8409  
 Shadow  
 Lakes

See p-124

LATERAL 379, SOUTHWEST INTERCEPTOR SEWER  
 PROJECT NO. 468-82723 (743797)  
 BUILT BY K. C. EXCAVATING INC.  
 BOOKED 12/12/99 PER AS BUILT PLAN

SCALE: 1" = 100'

CONSTRUCTION RECORD						SERVICE RECORD						
STATION	ELEVATION		DEPTH	MANHOLE	4-INCH "Y" BRANCHES		No. of Permit		House Number		DATE OF PERMITS	
	GROUND	GRADE			North West	South East	North West	South East	North West	South East	North West	South East
LATERAL 379	SOUTHWEST INTERCEPTOR			SEWER								
0+00 L-1	164.80	152.35 out	12.5	0+00 EXIST		4" SCH 40 0+28		2000-02093		8408 W Shadow Lakes		9-21-00
	164.80	152.72 in	12.1					2000-06664		8412 W Shadow Lakes		3-4-03
1+00	167.30	156.42	10.9									
2+00	170.60	160.12	10.5			4" SCH 40 1+97.9		1999-01402		8416 W Shadow Lakes		12-6-99
	173.00	162.34 out	10.7	2+59.97				2000-00560		8512 W Shadow Lakes		3-4-03
	173.00	162.44 in	10.6									
3+00	173.60	163.92	9.7									
4+00	176.70	167.62	9.1			4" SCH 40 3+93.98 Predco		2001-00518		8506 W Shadow Lakes		3-16-01
5+00	179.60	171.32	8.3			4" SCH 40 saddle 5+41.98 saddle		2002-02690		8510 W Shadow Lakes		9-30-02
	182.90	174.58	8.3	5+87.98		4" STUB SW 174.91		2000-02651		8514 W Shadow Lakes		12-4-00
								2000-02763		8602 W Shadow Lakes		12-21-00
0+00 L-2	173.00	159.63	13.4	0+00 EXIST								
						4" SCH 40 0+10 4" S 9V4H		2001-00865		3012 N High Point		4-12-01
1+00	179.20	160.03	19.2									
	180.50	160.11 out	20.4	1+20.00								
	180.50	160.21 in	20.3									
	180.70	160.51 out	20.2	1+93.86								
	180.70	160.61 in	20.1									
2+00	181.30	160.63	20.7									
3+00	179.10	161.03	18.1									
	179.70	161.18 out	18.5	3+37.19 = 0+00 L-4								
	179.70	161.28 in	18.4			2+58.19 4" SCH 40 3+48.4" E 14V9H		2002-02180	2000-01351	8027 Oak Ridge	3021 N High Point	8-13-02 6-2-00
4+00	179.90	161.53	18.4									
5+00	179.10	161.93	17.2									
	179.40	161.98 out	17.4	5+12.85 = 0+00 L-3								
	179.40	162.08 in	17.3			5+27 4" S 12V4H		2003-01528		8626 Oak Ridge		6-10-03
6+00	178.20	162.43	15.8	Per BTL EXC 16' H 9' V ←	5+77 4" N 12V9H	6+67 4" S 12V4H		2001-02885		8609 Shadow Lakes		11-13-01
								2002-01000	2000-02765	8613 Shadow Lakes	8702 Oak Ridge Cir	4-9-02 12-21-00
7+00	177.40	162.83	14.6									
	177.20	163.13 out	14.1	7+74.77								
	177.20	163.23 in	14.0									
8+00	175.90	163.33	12.6		7+88 4" N 8V9H	7+94 4" S 8V4H		2002-02548	2001-01514	8701 Shadow Lakes	8702 Oak Ridge	9-17-02 6-27-01
								2003-00057		8710 Oak Ridge		1-7-03
9+00	175.20	163.73	11.5					2003-01526		8710 Oak Ridge		6-10-03
						4" SCH 40 9+63.8 Saddle	4" SCH 40 9+77.77	2001-01353		8706 W SHADOW LAKES	8712 Oak Ridge Cir	1-25-01 6-2-00
10+00	174.20	164.13	10.1									
	174.50	164.21 out	10.3	10+19.77								
	174.50	164.31 in	10.2			8" STUB S 164.31						
11+00	174.60	164.63	10.0									
12+00	175.40	165.03	10.4									
	176.00	165.14 out	10.9	12+28.55				2001-02404		8710 Shadow Lakes		9-26-01
	176.00	165.24 in	10.8									
13+00	175.50	166.38	9.1					2002-02156		8706 Shadow Lakes		8-13-02
14+00	176.50	167.98	8.5					2001-03255		8702 Shadow Lakes		12-24-01
15+00	178.30	169.58	8.7			4" SCH 40 saddle 15+56.87		2001-00430		8610 Shadow Lakes		7-27-01
	182.70	170.86	11.8	15+79.57		4" STUB NE 171.19		2001-00061		8605 Shadow Lakes		1-9-01
0+00 L-3	179.40	161.98 out	17.4	0+00 = 5+12.85 L-2		4" SCH 40 0+05.00			2000-01352	8005 High Point		6-2-00
	179.40	168.83 in	10.6	OUTSIDE DROP		4" SCH 40 saddle 0+25.3		2001-00295		8605 Shadow Lakes		2-8-01
	180.50	169.00	11.5	0+43.08		4" STUB NE 169.33		2001-01644		8601 Shadow Lakes		7-6-01
0+00 L-4	179.70	161.18 out	18.5	0+00 = 3+37.19 L-2		4" SCH 40 0+55.3 Predco		2001-00579		3017 N High Point		3-16-01
	179.70	166.47 in	13.2	OUTSIDE DROP				2002-02692		8701 Oak Ridge		3-13-02
	178.80	166.80 out	12.0	0+83.30								
	178.80	166.90 in	11.9					2003-02197	2000-00115	8614 Oak Ridge	3013 High Point	8-14-03 1-14-00
1+00	178.30	166.97	11.3			4" SCH 40 1+43.3		2004-00442		8610 Oak Ridge		2-19-04
2+00	177.30	167.37	9.9					2004-00440		8606 W Oak Ridge		2-18-04
3+00	176.30	167.77	8.5			4" SCH 40 DL 3+34.32 TAP		2000-02603		3005 N High Point		11-29-00
	175.90	168.00	7.9	3+58.32		4" STUB W 168.33						
0+00 L-5	175.90	161.97 out	13.9	0+00 EXIST								
	175.90	163.97 in	11.9			0+37.5 4" S 8V5H		2002-02285		8405 Shadow Lakes		2-4-03
1+00	179.10	166.97	12.1			1+22.5 4" S 8V5H		2002-02266		8410 Shadow Lakes		2-4-03
2+00	182.00	169.97	12.0			4" SCH 40 2+07.5 4" S 8V5H		2001-01357		8413 W Shady Ln		6-4-01
3+00	183.10	172.97	10.1			4" SCH 40 3+70.0		2000-02151		8417 W Shady Ln		9-29-00
	183.20	174.47	8.7	3+50.00		4" STUB SW 174.80		2002-01070		3001 High Point		4-15-02