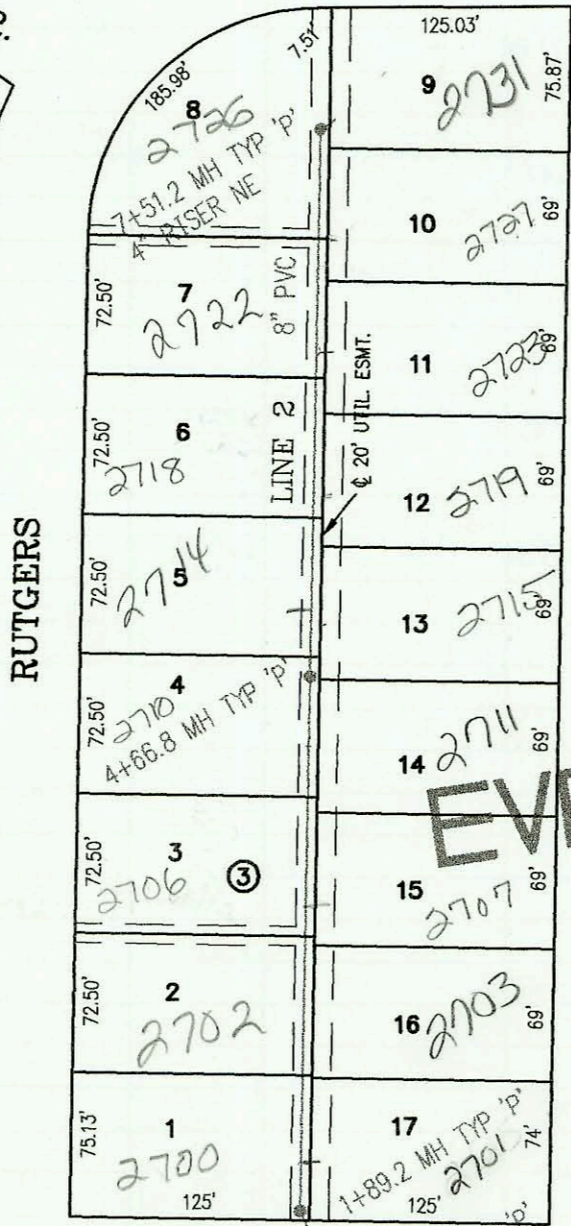


RYAN

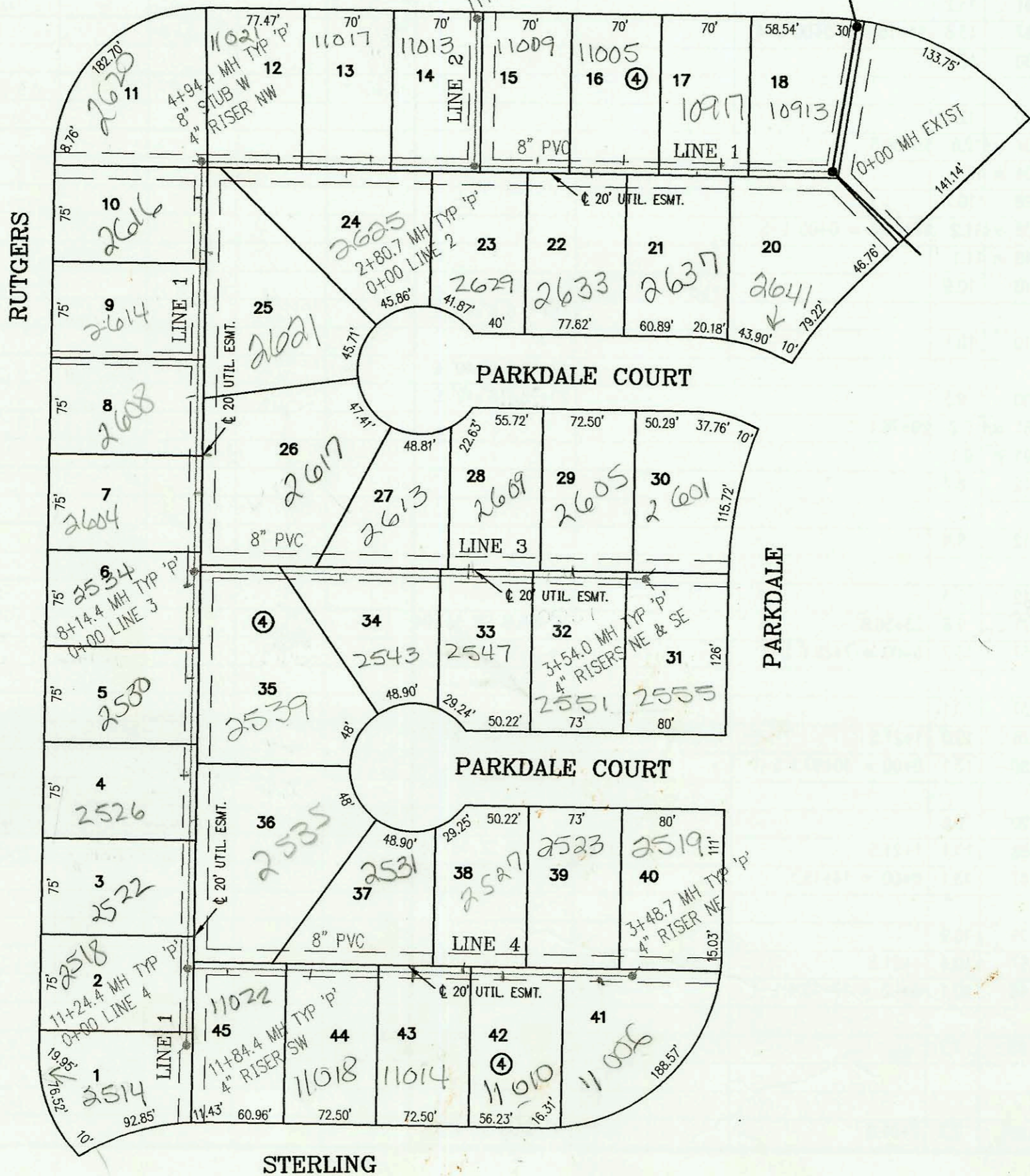
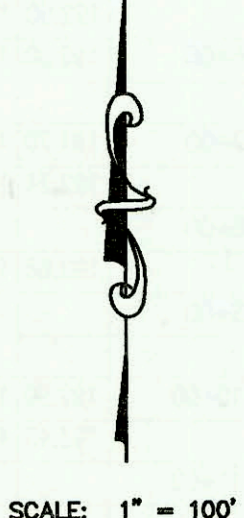
RYAN CIR.

LATERAL 436, SOUTHWEST INTERCEPTOR SEWER  
PROJECT NO. 468-83013 (743805)  
BUILT BY DONDLINGER AND SONS INC.  
BOOKED 12/20/99 PER PLAN

P-79



EVERGREEN



CONSTRUCTION RECORD					SERVICE RECORD								
STATION	ELEVATION		DEPTH	MANHOLE	4-INCH "Y" BRANCHES		No. of Permit		House Number		DATE OF PERMITS		
	GROUND	GRADE			North West	South East	North West	South East	North West	South East	North West	South East	
LAT 436, SOUTHWEST INTERCEPTOR SEWER													
LINE 1	0+00 L-1	168.53	150.59 out	17.9	0+00 EXIST								
		168.53	150.79 in	17.7		0+24 11" N 14V4H	0+32 4" S 14V14H	2000-02267	2001-01214	10915 W Central PK	2041 N Parkdale	10-17-00	5-17-01
	1+00	168.60	151.09	17.5		0+89 4" N 14V4H	1+05 4" S 14V14H	2000-01682	2001-01525	10917 W Central PK	2031 N Parkdale	7-21-00	12-23-00
						1+65 4" N 14V4H	1+89 4" S 14V14H	2000-02448	2001-00511	11005 W Central PK	2033 N Parkdale	11-9-00	2-25-00
	2+00	169.00	151.39	17.6		2+31 4" N 14V4H	2+61 4" S 14V14H	2001-00749	2001-00390	11009 W Central PK	2029 N Parkdale	4-4-01	2-21-01
		169.80	151.63	18.2	2+80.7 = 0+00 L-2								
	3+00	169.50	151.69	17.8		3+06 4" N 14V4H		2001-06750		11013 W Central PK		4-4-01	
						3+65 4" N 14V4H	3+50 4" S 14V14H	2001-01213	2000-02268	11017 W Central PK	2025 PARKDALE	5-17-01	10-17-00
	4+00	169.80	151.99	17.8		4+34 4" N 14V4H		2001-02788		11021 Central PK		11-01-01	
		170.60	152.27 out	8.3	4+94.4	8" STUB W 152.47							
		170.60	152.47 in	18.1		4" NW 14V6H		2001-02205		2029 Rutgers		12-18-01	
	5+00					5+24 4" W 14V4H		2001-00001		2029 Rutgers		1-2-02	
							5+64 4" E 13V14H		2000-01799		2029 Parkdale		7-26-00
	6+00	169.80	152.79	17.0		6+01 4" W 13V4H		2002-02296		2014 N Rutgers		8-21-02	
						6+76 4" W 12V4H		2002-01333		2009 Rutgers		5-19-03	
	7+00	169.50	153.09	16.4			7+25 4" E 12V14H		2000-00138		2017 Parkdale		1-15-2000
							7+53 4" W 13V4H		2002-02108		2004 N Rutgers		8-6-02
	8+00	171.00	153.39	17.6									
		171.70	153.43	18.3	8+14.4 = 0+00 L-3								
	9+00	170.50	153.69	16.8		8+25 4" W 14V4H	8+67 4" E 13V14H	2002-01437	2000-01226	2534 N Rutgers	2539 Parkdale	5-21-02	4-18-00
						9+00 4" W 13V4H		2002-01099		2535 Rutgers		4-15-02	
	10+00	170.50	153.99	16.5		9+75 4" W 12V4H	10+10 4" E 13V14H	2002-01066	2000-01280	2526 Rutgers	2535 Parkdale	4-15-02	5-25-00
						10+52 4" W 12V4H		2002-02257		2527 Rutgers		1-23-02	
	11+00	169.20	154.29	14.9		11+15 4" W 11V4H							
		169.20	154.36	14.8	11+24.4 = 0+00 L-4								
		168.30	154.54	13.8	11+84.4	4" SW 10V5H		2002-01587		2514 N Rutgers		6-5-02	
LINE 2	0+00 L-2	169.80	151.83	18.0	0+00 = 2+80.7 L-1								
	1+00	167.80	153.83	14.0									
		168.00	154.13 out	3.9	1+15.1								
		168.00	154.33 in	3.7									
		168.10	154.63 out	3.5	1+89.2								
		168.10	154.83 in	3.3									
	2+00	167.80	154.63	13.2		2+09 4" W 9V4H	2+13 4" E 9V14H	2001-00619	2000-00139	2700 Rutgers	2701 Parkdale	3-20-01	1-15-2000
						2+83 4" W 10V4H	2+90 4" E 10V14H	2001-01209	2000-00512	2702 Rutgers	2905 Parkdale	5-7-01	2-25-00
	3+00	169.40	155.27	14.1									
						3+54 4" W 11V4H	3+50 4" W 11V14H	2001-01436	2000-01505	2706 Rutgers	2707 Parkdale	6-12-01	6-26-00
	4+00	169.00	155.67	13.3		4+30 4" W 11V4H	4+20 4" E 11V14H	2001-01437	2000-00997	2710 Rutgers	2711 Parkdale	6-12-01	4-21-00
		171.40	155.94	15.5	4+66.8								
	5+00	171.00	156.07	14.9		5+01 4" W 11V4H	4+91 4" E 11V14H	2001-01742	2000-01828	2718 N Rutgers	2715 N Parkdale	7-13-01	8-24-00
						5+75 4" W 11V4H	5+60 4" E 11V14H	2000-02661	2000-02661	2719 N Rutgers	2719 N Parkdale	7-13-01	12-5-00
	6+00	171.30	156.47	14.8			6+37 4" E 11V14H	2000-02449		2720 N Rutgers	2720 N Parkdale		11-9-00
						6+45 4" W 11V4H		2001-02200		2721 Rutgers		12-18-01	
	7+00	170.70	156.87	13.8		7+20 4" W 10V4H	6+95 4" E 10V14H	2001-00746	2000-01780	2726 N Rutgers	2707 N Parkdale	4-4-01	8-4-00
		170.40	157.08	13.3	7+51.2	4" NE 9V16H		2000-00530		2731 Rutgers		2-29-00	
LINE 3	0+00 L-3	171.70	153.63	18.1	0+00 = 8+14.4 L-1								
	1+00	170.20	154.03	16.2		1+31 4" N 12V14H	1+13 4" S 12V4H	2001-00475	2001-00388	2613 Parkdale	2543 Parkdale	3-5-01	2-21-01
	2+00	168.80	154.43	14.4		2+18 4" N 10V14H	2+14 4" S 10V4H	2000-00041	2001-00389	2609 Parkdale	2547 Parkdale	11-7-2000	2-21-01
	3+00	167.50	154.83	12.7		2+96 4" N 9V14H	2+91 4" S 9V4H	2000-01281	2000-01504	2605 Parkdale	2551 N Parkdale	5-25-00	6-26-00
		167.30	155.05	12.3	3+54.0	4" NE 8V16H	4" SE 8V5H	2000-02047	2000-02450	2601 Parkdale	2555 N Parkdale	9-12-00	11-9-00
LINE 4	0+00 L-4	169.20	154.56	14.6	0+00 = 11+242.4 L-1								
							0+31 4" S 10V4H		2000-00018		11021 Sterling		1-2-02
	1+00	169.50	154.96	14.5		1+21 4" N 10V14H	0+96 4" S 10V4H	2000-00273	2000-00011	2501 Parkdale	11012 Sterling	2-1-2000	7-2-02
							1+74 4" S 10V4H		2000-02293		11014 W Sterling		8-21-02
	2+00	169.00	155.36	13.6		2+16 4" N 9V14H		2000-02018		2509 Parkdale		9-12-00	
							2+45 4" S 10V4H		2000-02155		11010 Sterling		11-20-02
	3+00	168.80	155.76	13.0		2+91 4" N 9V14H	3+22 4" S 8V4H	2001-00387	2000-02267	2523 Parkdale	11030 Sterling	2-21-01	12-4-02
		168.50	155.95	12.6	3+48.7	4" NE 8V15H		2000-02246		2519 Parkdale		10-13-00	
LINE 5	0+00 L-5	172.40	156.27	16.1	0+00 EXIST								
							0+14 4" S 11V4H		2000-00037		10919 Ryan		1-15-2000
	1+00	169.20	156.57	12.6			0+81 4" S 9V4H		2000-00040		10919 Ryan		1-7-2000
	2+00	168.80	156.87	11.9			2+29 4" S 9V4H		2001-00197		11010 W Ryan		1-30-01
	3+00	171.60	157.17	14.4			3+06 4" S 11V4H		2001-00747		11014 W Ryan		4-3-01
							3+66 4" S 12V4H		2001-01210		11018 W Ryan		5-17-01
	4+00												
		173.40	157.48	15.9	4+04.0	8" STUB W 157.48							