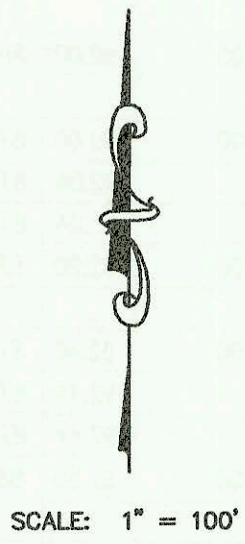
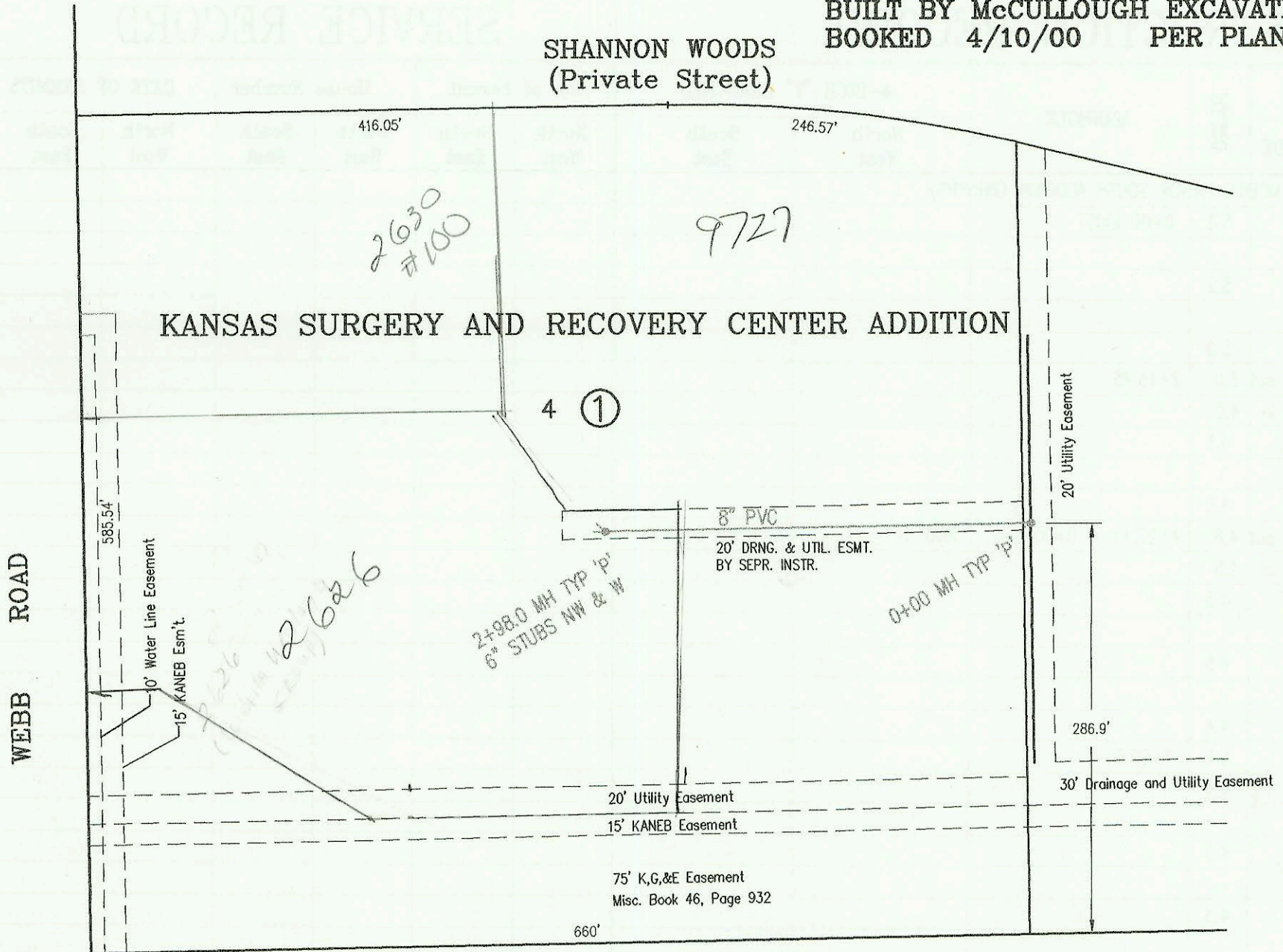
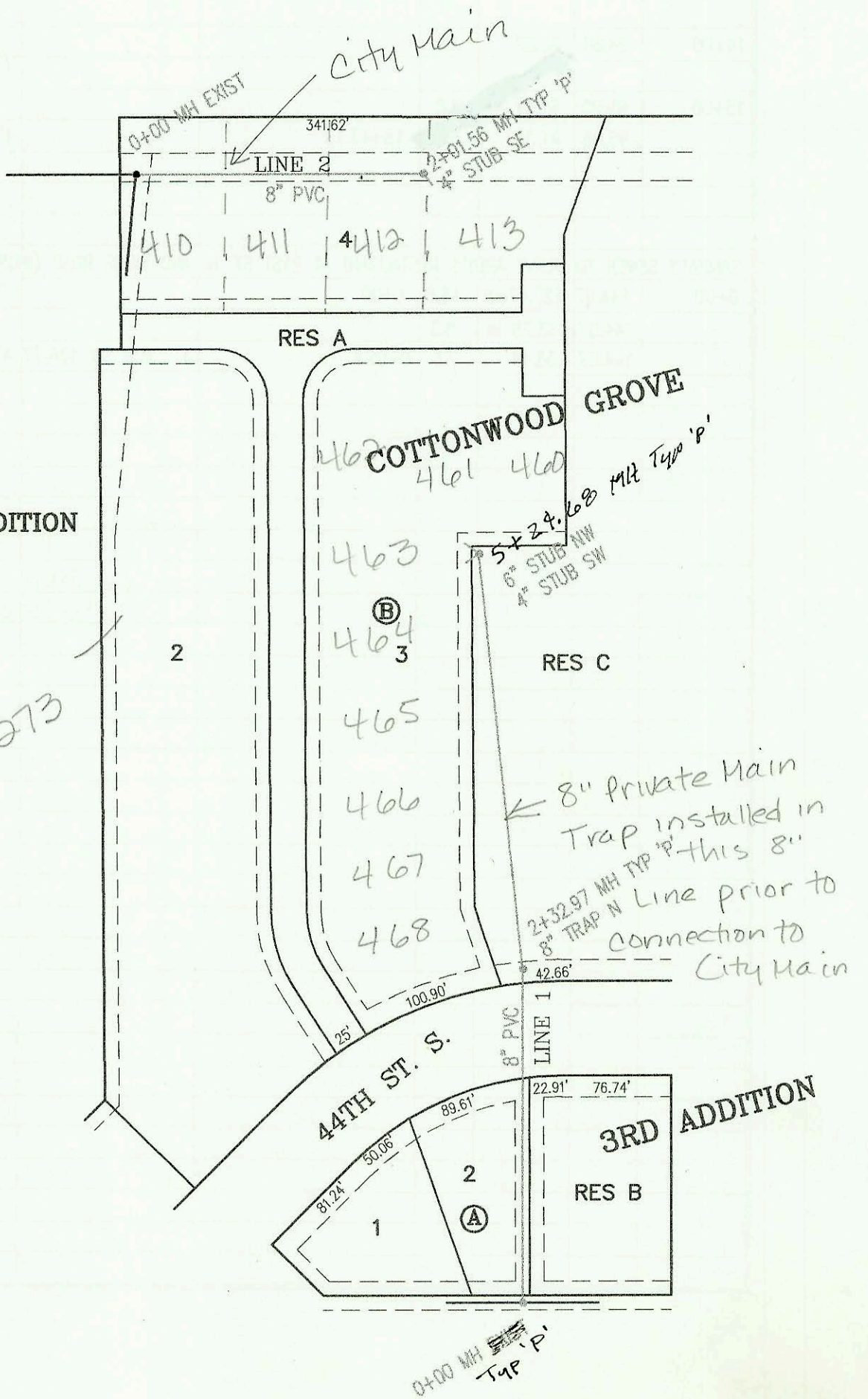


SANITARY SEWER TO SERVE LOT 4, BLK 1,
KANSAS SURGERY AND RECOVERY CENTER ADDITION
PROJECT NO. 909PPS
BUILT BY McCULLOUGH EXCAVATION
BOOKED 4/10/00 PER PLAN



SANITARY SEWER TO SERVE LOTS 1 & 2, BLK A;
LOTS 3 & 4, BLK B; COTTONWOOD GROVE 3RD ADDITION
PROJECT NO. 897PPS
BUILT BY ALAN'S EXCAVATING
BOOKED 4/7/00 PER AS BUILT PLAN



See N273

