

TYLER ROAD

PEPPER RIDGE

MEADOW PASS

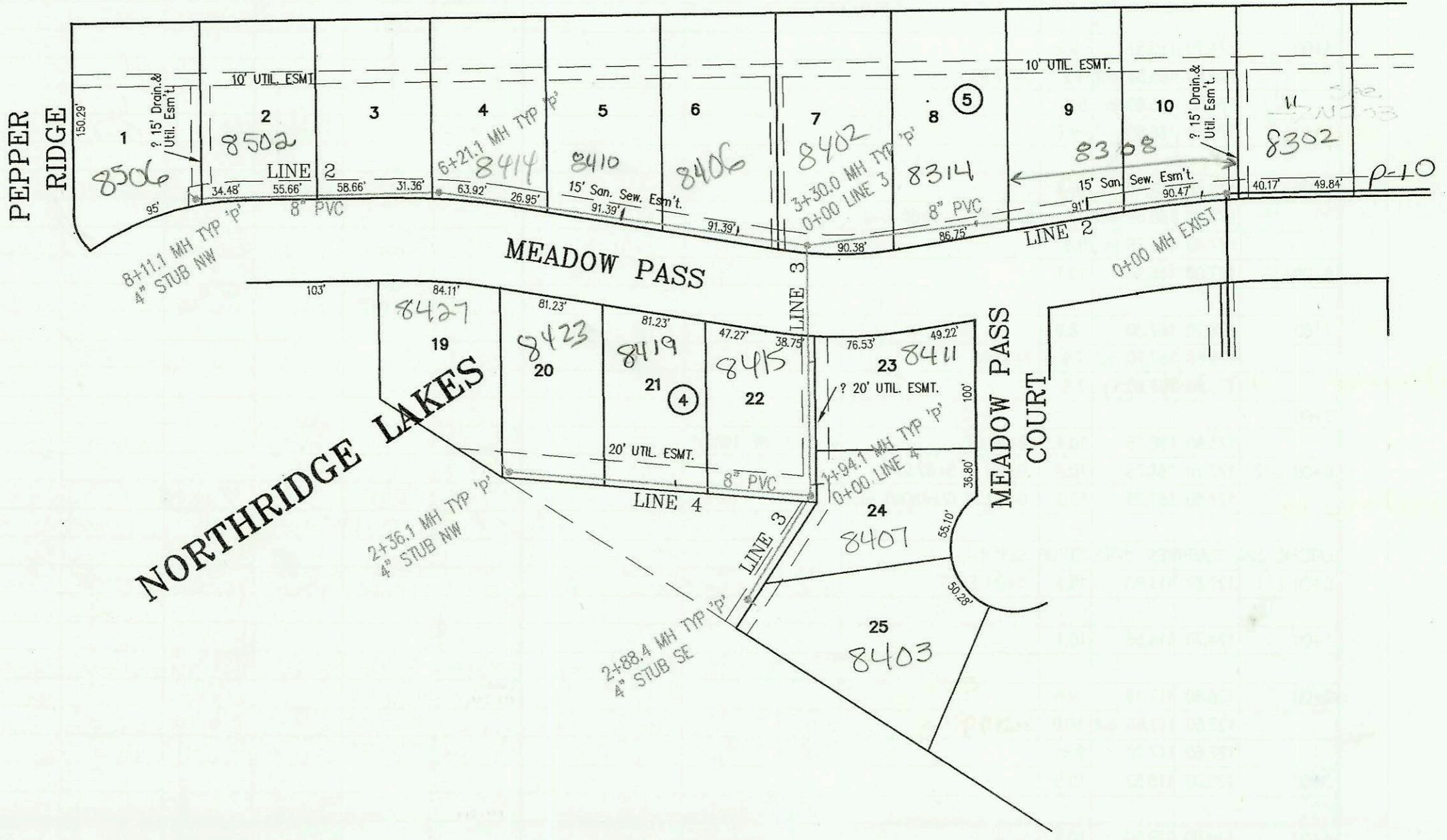
MEADOW PASS COURT

2760 N. Tyler  
 Fee in Lieu of Agri and  
 Lateral in AMH of  
 9/5/6440 Paid  
 Rec'd 12/10/03  
 \$5600 Equity for Paid  
 2/17/02  
 PRU ease to  
 cross wall base  
 Rgd.

Storm 0-459

SCALE: 1" = 100'

LATERAL 387, SOUTHWEST INTERCEPTOR SEWER  
 PROJECT NO. 468-82783 (743811)  
 BUILT BY NOWAK CONSTRUCTION CO.  
 BOOKED 4/11/00 PER PLAN



CONSTRUCTION RECORD						SERVICE RECORD						
STATION	ELEVATION		DEPTH	MANHOLE	4-INCH "Y" BRANCHES		No. of Permit		House Number		DATE OF PERMITS	
	GROUND	GRADE			North West	South East	North West	South East	North West	South East	North West	South East
LATERAL 387, SOUTHWEST INTERCEPTOR SEWER												
0+00 L-1	168.80	158.85	10.0	0+00 EXIST								
1+00	169.40	159.45	10.0					2003-01184	8630 Meadow Pass			7-9-03
2+00	170.40	160.05	10.4			2+39 4" E 7V14H		2003-01225	8604 Meadow Pass			5-7-03
3+00	171.50	160.65	10.9									
	172.30	160.77	11.5	3+20.2								
	172.30	160.97	11.3									
4+00	172.60	161.45	11.2									
						4+71 4" S 7V4H		2002-00461	8622 Meadow Pass			2-21-02
5+00	173.20	162.05	11.2					2002-00584	2160 Tule			3-5-02
6+00	173.40	162.65	10.8			6+01 4" S 7V4H		2002-01509	8618 W Meadow Pass			5-29-02
						6+87 4" S 6V4H		2002-01365	8011 Meadow Pass			5-5-02
7+00												
	173.10	163.28 out	9.8	7+05.6								
	173.10	163.48 in	9.6			7+40 4" E 5V9H						
8+00												
	173.80	164.48	9.3	8+05.6		4" STUB NE 5V5H		2001-01923	2705 Pepper Ridge			8-3-01
0+00 L-2	177.20	161.14	16.1	0+00 EXIST								
						0+22 4" N 12V9H						
1+00	177.10	161.64	15.5			1+11 4" N 12V8H						
2+00	177.50	162.14	15.4			2+01 4" N 12V4H		2002-01507	8014 Meadow Pass			5-29-02
						2+91 4" N 12V2H		2002	8482 Meadow Pass			6-12-02
3+00	177.30	162.64	14.7									
	177.80	162.79	15.0	3+30.0 = 0+00 L-3								
4+00	177.60	163.14	14.5			3+85 4" N 12V8H		2002-01375	8460 Meadow Pass			5-16-02
						4+75 4" N 12V9H		2002-02027	8419 Meadow Pass			7-24-02
5+00	178.00	163.64	14.4									
						5+59 4" N 11V12H		2003-01052	8414 Meadow Pass			4-18-03
6+00	177.70	164.14	13.6									
	178.00	164.25	13.8	6+21.1								
7+00	176.50	164.64	11.9			6+53 4" N 10V10H		2002-01195	8502 Meadow Pass			4-24-02
						7+43 4" N 8V12H						
8+00	175.50	165.14	10.4									
	175.80	165.20	10.6	8+11.1		4" STUB NW 7V6H		2002-02800	8506 Meadow Pass			10-4-02
0+00 L-3	177.80	162.99	14.8	0+00 = 3+30.0 L-2								
						0+90 4" E 10V14H		2002-01506	8411 W Meadow Pass			5-29-02
1+00	176.40	164.09	12.3			1+87 4" E 7V14H		2003-01265	8419 Meadow Pass			5-23-03
	173.30	165.13 out	8.2	1+94.1 = 0+00 L-4								
	173.30	165.33 in	8.0									
2+00	172.70	165.39	7.3									
	173.00	166.36	6.6	2+88.4		4" STUB SE 5V14H		2001-00799	8403 Meadow Pass			4-6-01
0+00 L-4	173.10	165.33	7.8	0+00 = 1+94.1 L-3								
						0+31 4" N 6V14H		2001	8415 Meadow Pass			5-31-01
1+00	173.00	166.23	6.8			1+03 4" N 6V14H		2000-02279	8414 Meadow Pass			10-17-00
						1+87 4" N 7V14H		2003-00443	8423 Meadow Pass			1-14-03
2+00	174.00	167.13	6.9									
	174.70	167.45	7.3	2+36.1		4" STUB NW 7V17H		2000-01824	8427 W Meadow Pass			8-14-00
LATERAL 320, SOUTHWEST INTERCEPTOR (CONT. FROM P-124)												
0+00 L-2	127.81	117.34 out	10.5	0+00 EXIST				2001-02224	5707 W 42nd St S			9-6-01
	127.81	117.44 in	10.4									
1+00	129.10	117.84	11.3			4" SC440 0+86 TAP		2001-00551	5623 W 42nd St S			3-14-01
2+00	129.50	118.24	11.3			4" SC440 1+64.39 TAP		2001-01072	5611 W 42nd St S			5-1-01
3+00	128.90	118.64	10.3					2001-00111	5601 W 42nd St S			1-17-01
	129.30	118.72	10.6	3+18.39		8" STUB E 118.72						

SWR 2002-01354 5/15/02 8308 W Meadow Pass Brand PHS