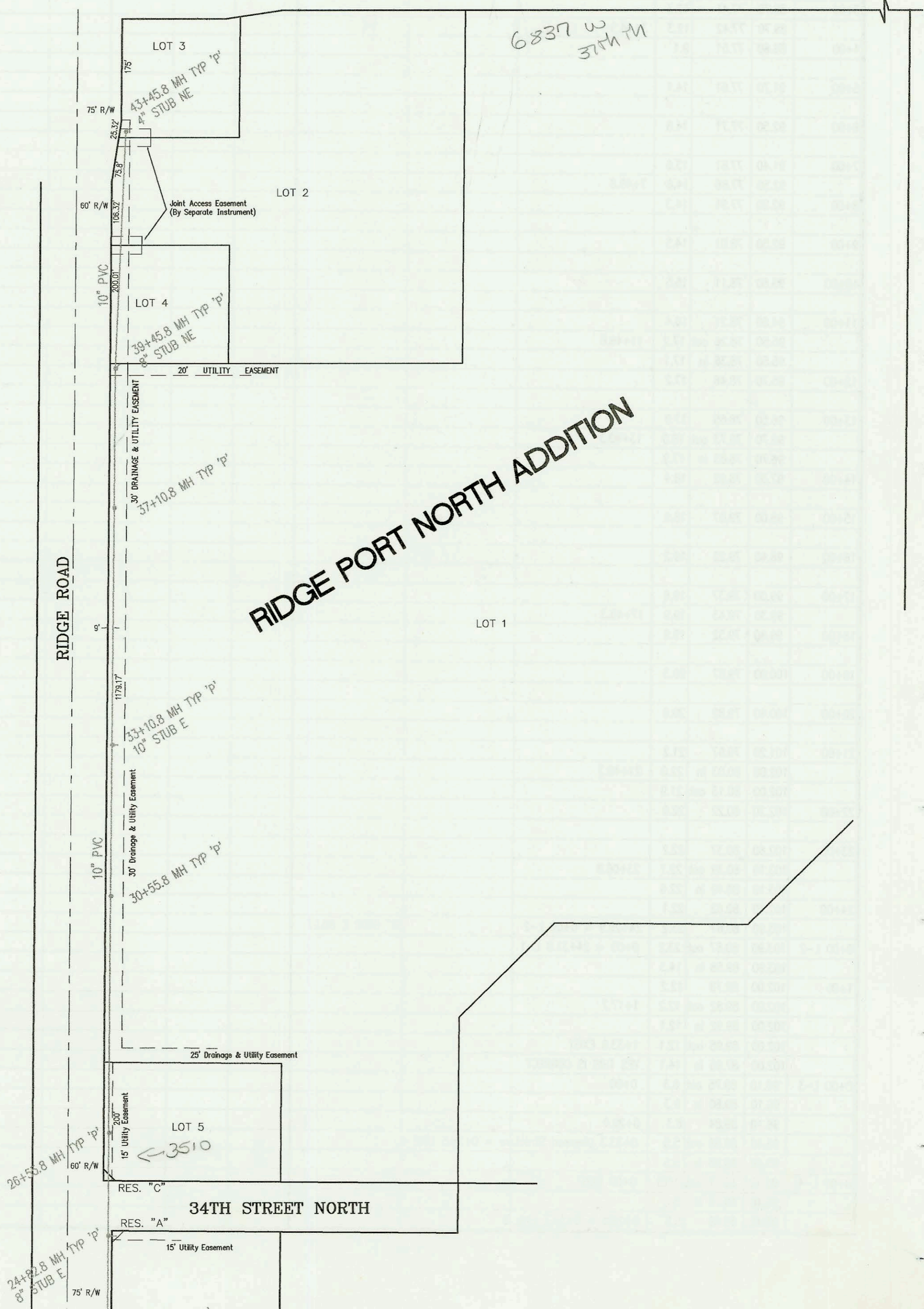


LATERAL 429, SOUTHWEST INTERCEPTOR SEWER
PROJECT NO. 468-82987 (743809)
BUILT BY DONDLINGER AND SONS CONSTRUCTION CO.
5/3/2000 PER PLAN



SCALE: 1" = 150'

37TH STREET NORTH



RIDGE PORT NORTH ADDITION

UNPLATTED

RIDGE ROAD

34TH STREET NORTH

RES. "C"

RES. "A"

26+55.8 MH TYP 'P'
15' UTILITY EASEMENT

24+82.8 MH TYP 'P'
8" STUB E

3510

6837 W
37th M

