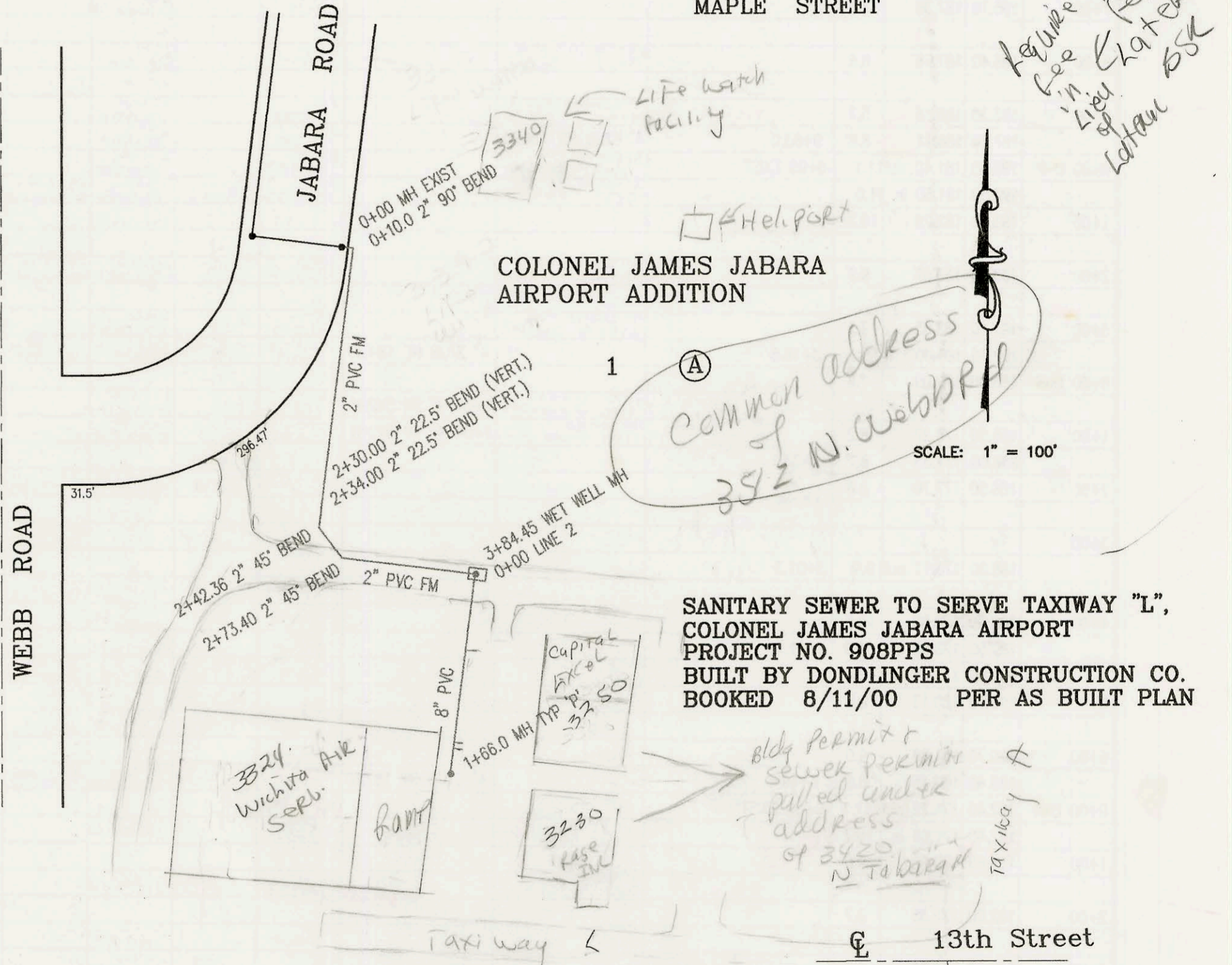
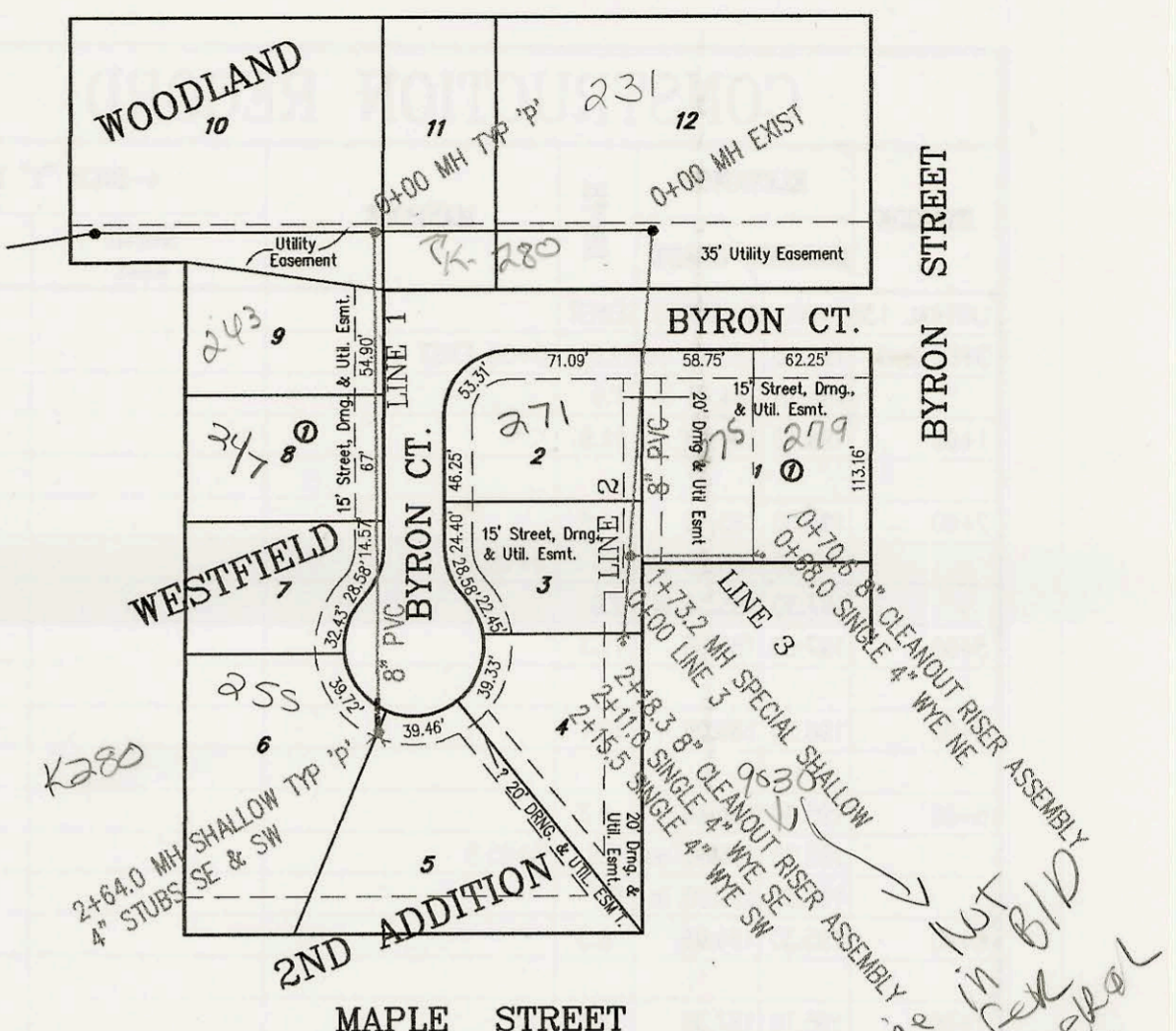
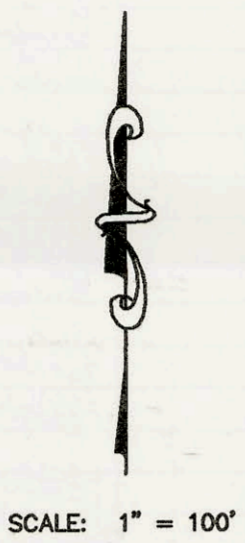


LATERAL 32, MAIN 1, WESTLINK SEWER
 PROJECT NO. 468-83082 (743832)
 BUILT BY W.B. CARTER CONSTRUCTION CO.
 BOOKED 8/11/00 PER AS BUILT PLAN



SANITARY SEWER TO SERVE TAXIWAY "L",
 COLONEL JAMES JABARA AIRPORT
 PROJECT NO. 908PPS
 BUILT BY DONDLINGER CONSTRUCTION CO.
 BOOKED 8/11/00 PER AS BUILT PLAN

LATERAL 421, SOUTHWEST INTERCEPTOR SEWER
 PROJECT NO. 468-82942 (743800)
 BUILT BY W.B. CARTER CONSTRUCTION
 BOOKED 8/15/00 PER AS BUILT PLAN

