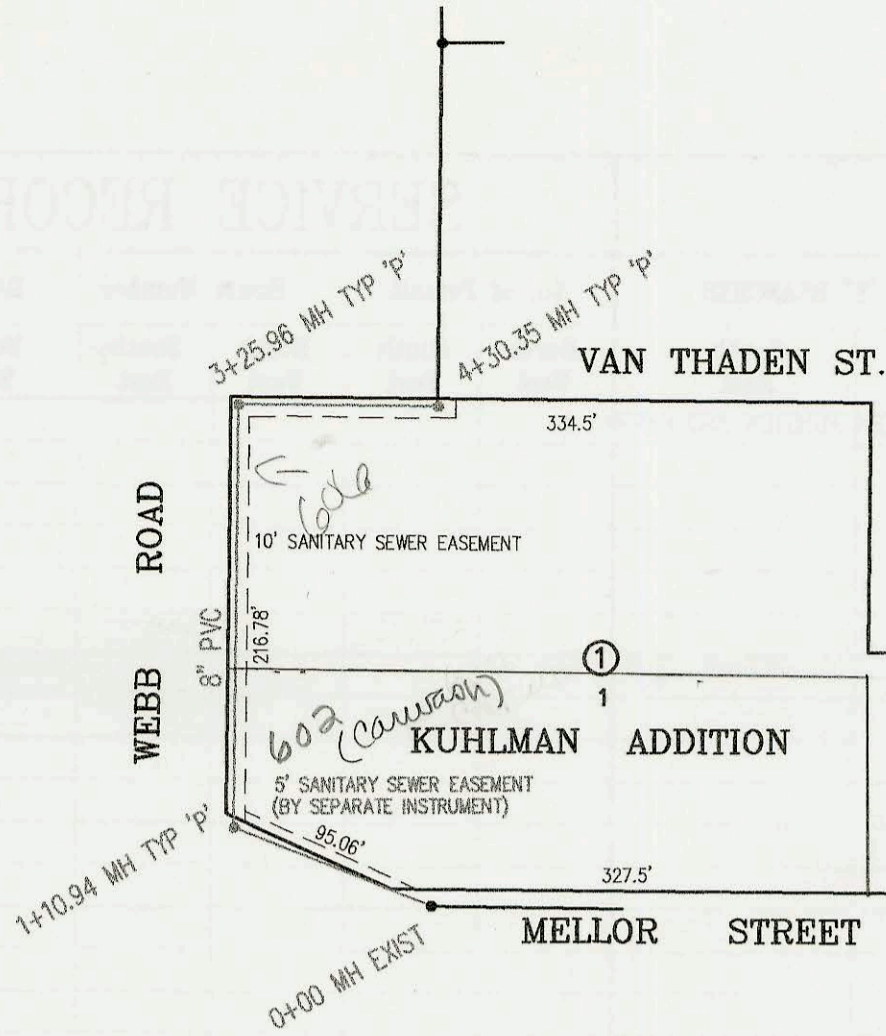
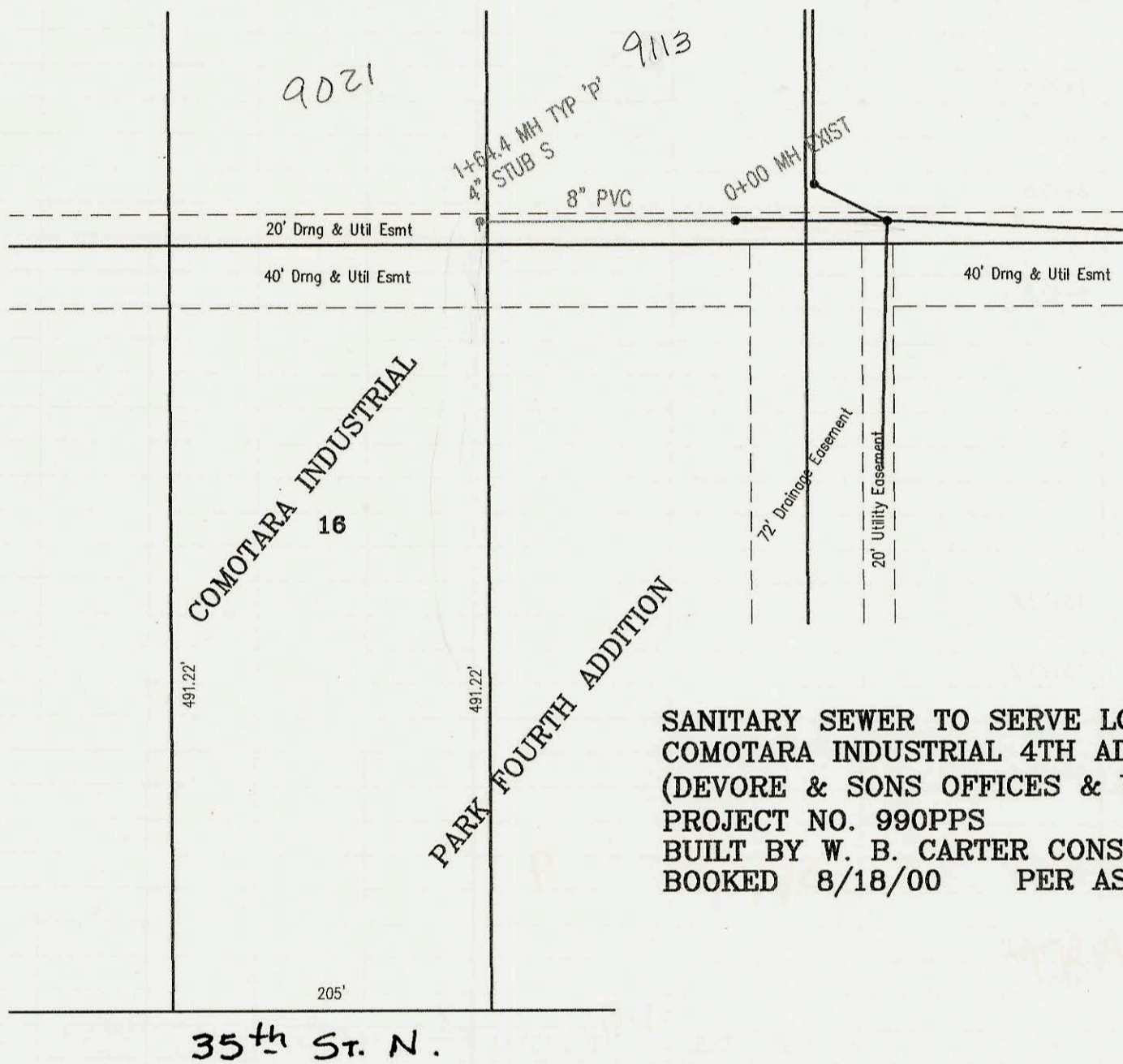


SANITARY SEWER RELOCATION TO SERVE  
LOT 1, BLK 1, KUHLMAN ADDITION  
PROJECT NO. 1005PPS  
BUILT BY MIES CONSTRUCTION CO.  
BOOKED 8/18/00 PER AS BUILT PLAN



SCALE: 1" = 100'



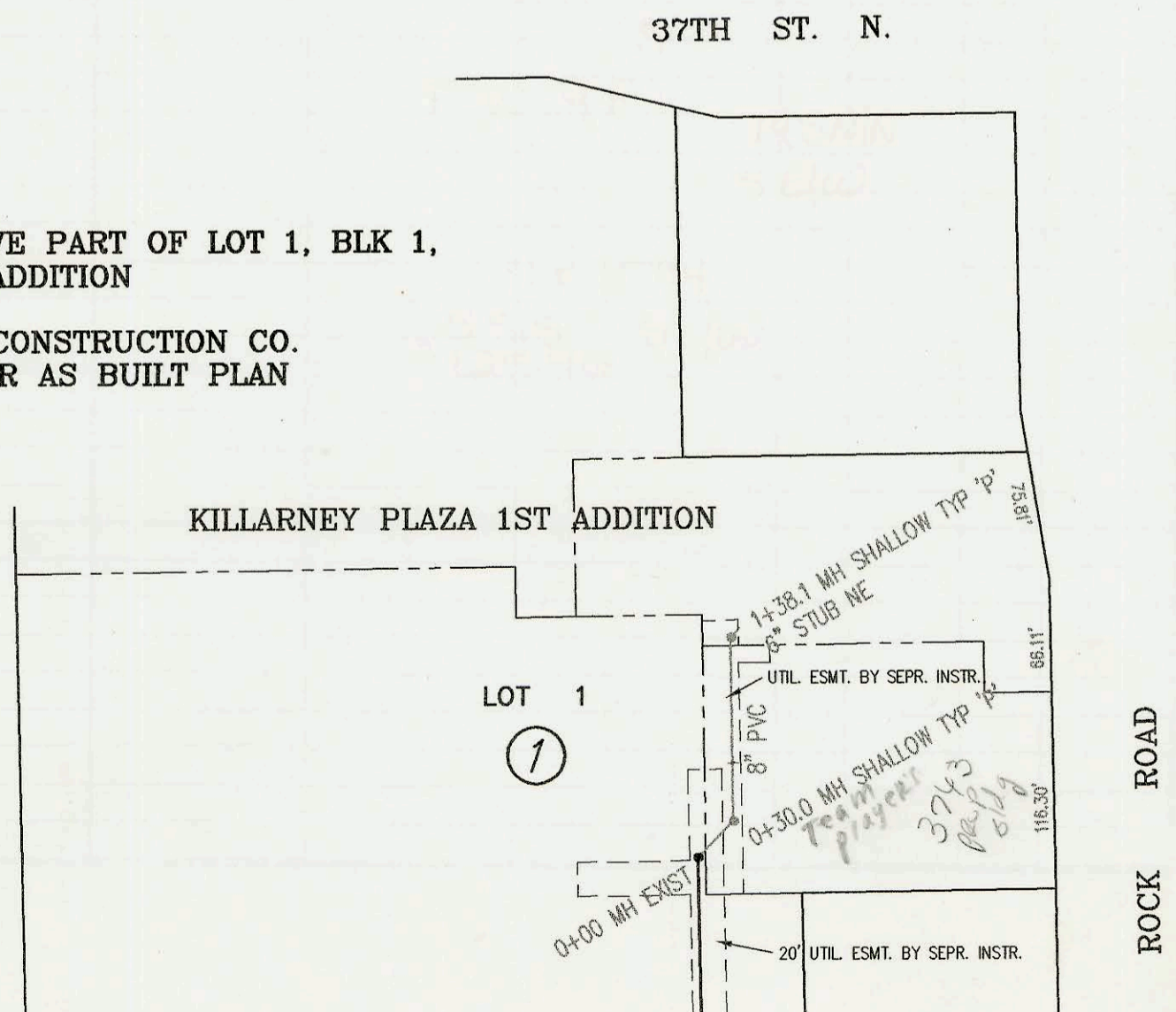
SCALE: 1" = 100'

SANITARY SEWER TO SERVE LOT 16,  
COMOTARA INDUSTRIAL 4TH ADDITION  
(DEVORE & SONS OFFICES & WAREHOUSE)  
PROJECT NO. 990PPS  
BUILT BY W. B. CARTER CONSTRUCTION CO.  
BOOKED 8/18/00 PER AS BUILT PLAN

SANITARY SEWER TO SERVE PART OF LOT 1, BLK 1,  
KILLARNEY PLAZA FIRST ADDITION  
PROJECT NO. 982PPS  
BUILT BY W. B. CARTER CONSTRUCTION CO.  
BOOKED 8/18/00 PER AS BUILT PLAN



SCALE: 1" = 100'



ROCK ROAD

CONSTRUCTION RECORD						SERVICE RECORD						
STATION	ELEVATION		DEPTH	MANHOLE	4-INCH "Y" BRANCHES		No. of Permit		House Number		DATE OF PERMITS	
	GROUND	GRADE			North West	South East	North West	South East	North West	South East	North West	South East
SANITARY SEWER RELOCATION TO SERVE LOT 1, BLK 1, KUHLMAN ADDITION (1005PPS)												
0+00	177.06	167.61 out	9.4	0+00 EXIST								
	177.06	168.11 in	8.9									
1+00	176.20	168.71	7.5									
	177.00	168.77 out	8.2	1+10.94								
	177.00	168.87 in	8.1					2001-02930	602N Webb		11-16-01	
2+00	179.00	169.42	9.6									
3+00	180.30	170.03	10.3									
	182.00	170.19 out	11.8	3+25.96	4" SCH 40 3+35.96			2000-01925	606N Webb Rd		8-29-00	
	182.00	170.29 in	11.7									
4+00	181.70	170.74	11.0									
	180.00	170.92 in	9.1	4+30.35								
	180.00	171.43 out	8.6									
SANITARY SEWER TO SERVE LOT 16, COMOTARA INDUSTRIAL PARK 4TH ADDITION (990PPS)												
0+00	239.97	231.25	8.7	0+00 EXIST								
1+00	238.90	231.55	7.3									
	238.95	231.75	7.2	1+64.4	4" STUB S 232.08							
SANITARY SEWER TO SERVE PART OF LOT 1, BLK 1, KILLARNEY PLAZA FIRST ADDITION (982PPS)												
0+00	198.02	191.95 out	6.1	0+00 EXIST								
	198.02	192.08 in	5.9									
	198.41	192.17 out	6.2	0+30.0								
	198.41	192.27 in	6.1		4" SCH 40 PVC 0+60.9 Saddle			2001-01113	3743 N Rock Rd		5-7-01	
1+00	198.10	192.55	5.5									
	197.94	192.71	5.2	1+38.1	6" STUB NE 192.92							