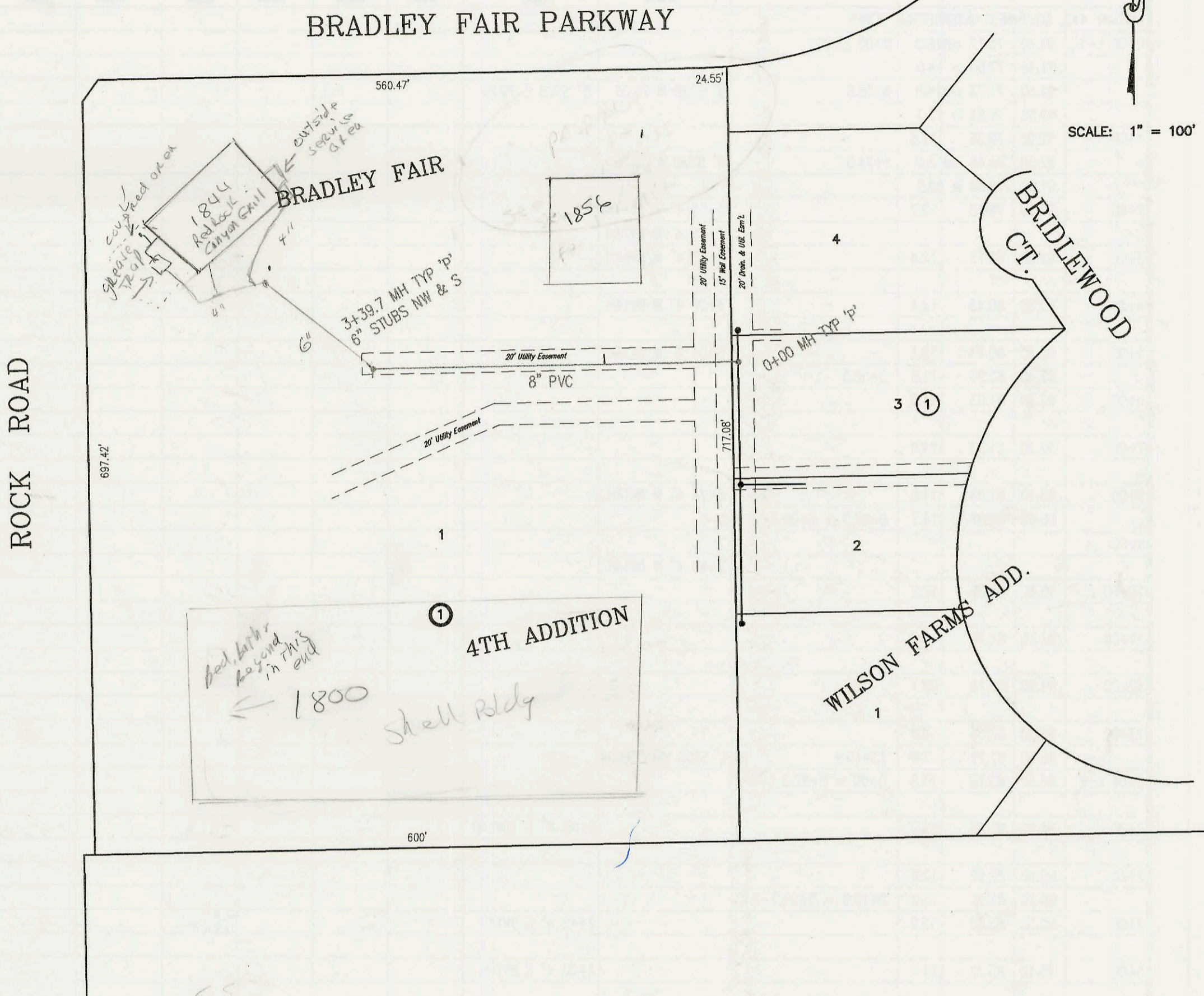


SANITARY SEWER TO SERVE LOT 1, BLK 1,
BRADLEY FAIR 4TH ADDITION (BRADLEY FAIR SOUTH PARKWAY)
PROJECT NO. 1022PPS
BUILT BY W.B. CARTER CONSTRUCTION CO.
BOOKED 9/18/00 PER AS BUILT PLAN

1844



SCALE: 1" = 100'

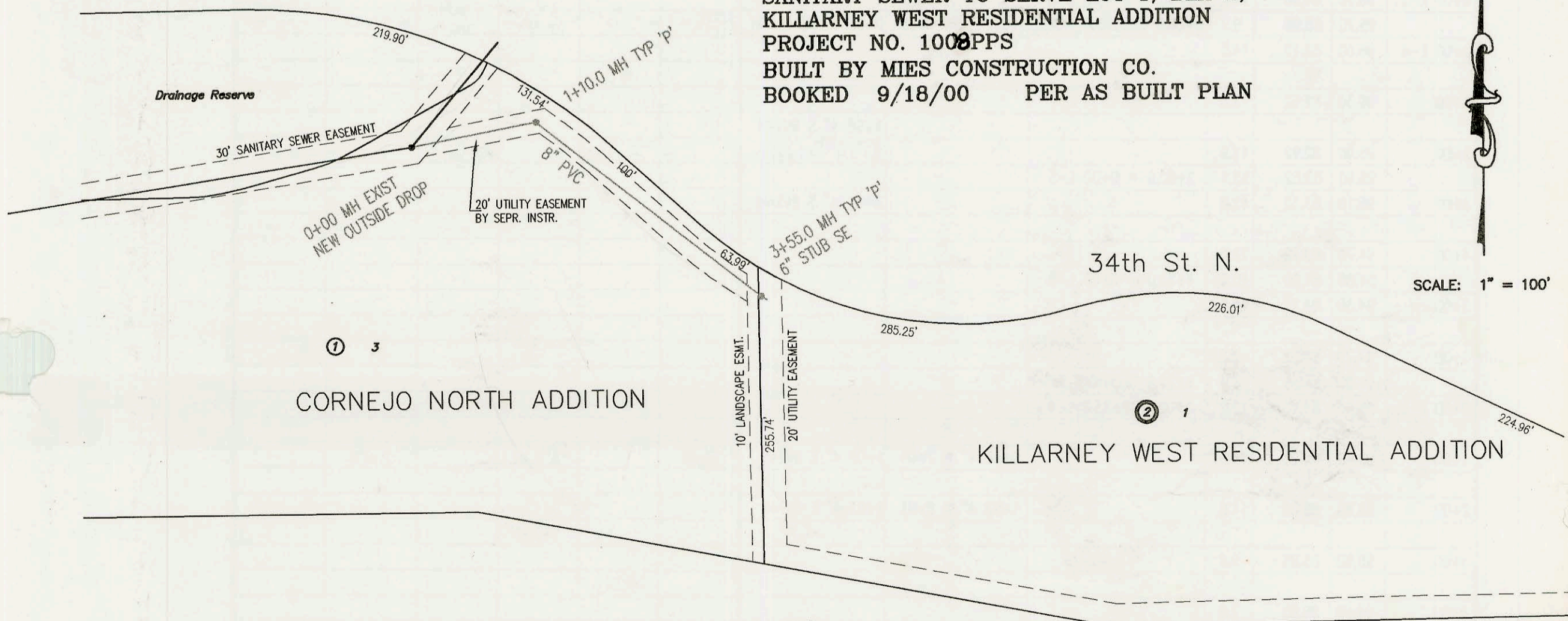


SS

SANITARY SEWER TO SERVE LOT 1, BLK 2,
KILLARNEY WEST RESIDENTIAL ADDITION
PROJECT NO. 1000PPS
BUILT BY MIES CONSTRUCTION CO.
BOOKED 9/18/00 PER AS BUILT PLAN



SCALE: 1" = 100'



K-96

CONSTRUCTION RECORD						SERVICE RECORD						
STATION	ELEVATION		DEPTH	MANHOLE	4-INCH "Y" BRANCHES		No. of Permit		House Number		DATE OF PERMITS	
	GROUND	GRADE			North West	South East	North West	South East	North West	South East	North West	South East
SANITARY SEWER TO SERVE LOT 1, BLK 1, BRADLEY FAIR 4TH ADDITION (1022PPS)												
0+00	198.30	186.87 out	11.4	0+00								
	198.30	187.03 in	11.3									
1+00	202.30	187.45	14.9		6" sch 40 1+22.7 TAP		2000-01983		1848 Rock Rd			9-6-00
2+00	203.00	187.87	15.1									
3+00	202.10	188.29	13.8									
	202.60	188.46	14.1	3+39.7	6" STUB NW 188.68 6" sch 40 6" + 4" sch 40 6" STUB NW	6" STUB S 188.68 6" sch 40	2000-01982 2001-01215	2000-01981	1844 Rock Rd 1844 Rock Rd	1800 Rock Rd		9-6-00 5-17-01
SANITARY SEWER TO SERVE LOT 1, BLK 2, KILLARNEY WEST RESIDENTIAL ADDITION (1008PPS)												
0+00	171.99	152.05 out	19.9	0+00								
	171.99	158.18 in	13.8									
1+00	175.40	158.71	16.7									
	176.25	158.76 out	17.5	1+10.0								
	176.25	158.86 in	17.4									
2+00	174.60	160.38	14.2									
3+00	173.00	160.78	12.2									
	174.60	161.00	13.6	3+55.0		6" STUB SE 161.17						
LATERAL 442, SOUTH WEST INTERCEPTOR SEWER (CONT. FROM P-147)												
0+00 L-6	94.80	84.20	10.6	0+00 = 4+73.0 L-4								
							2001-03145		2832 Angel			12-11-01
1+00	94.60	84.80	9.8									
2+00	95.00	85.40	9.6									
	95.80	85.87	9.9	2+78.3								
3+00	95.50	86.00	9.5									
	95.50	86.41	9.1	3+67.6 CLEANOUT RISER	3+63 4" W 6V11H	3+63 4" NE 5V12H						
2001-01552-6/25/01- 1844 N Rock Rd - Grease Interceptor - Boardman - 4" sch 40 #H45 2V45												
*** 1844 N Rock Rd - 5/17/01 - McCullough - 2 lines going to Riser on SE corner of lot (6" riser) 1-line Runs to North on East side of Bldg - 1 TWINCO 2-line Runs from SE corner Riser to the West to approx middle of Bldg on south side - 1 TWINCO, 2 V45 Same line continues to West & turns North with 2 H45 & runs up West side to North end (TWINCO) NOTE from Insp Petermans Plumber shall obtain Permit to install Grease Interceptor & tie in 2 other lines by P. 1858												
** SWR 2000-01983 1848 N Rock Rd - Partial Service Line for Prop Bldg - Irwin Pkg: TAP 217 of MH 31347 6" sch 40 pipe ended with twin CO. 2-45° Bends - Vert Require 2nd permit + Insp when bldg is connected.												
* SWR 2000-01982 9-6-00 1844 N Rock Rd - Partial Service Line for Prop. Bldg by Irwin Pkg: 6" sch 40 6" MH stub ended with CO at Prop site. Require a 2nd permit + Insp when Bldg is connected												