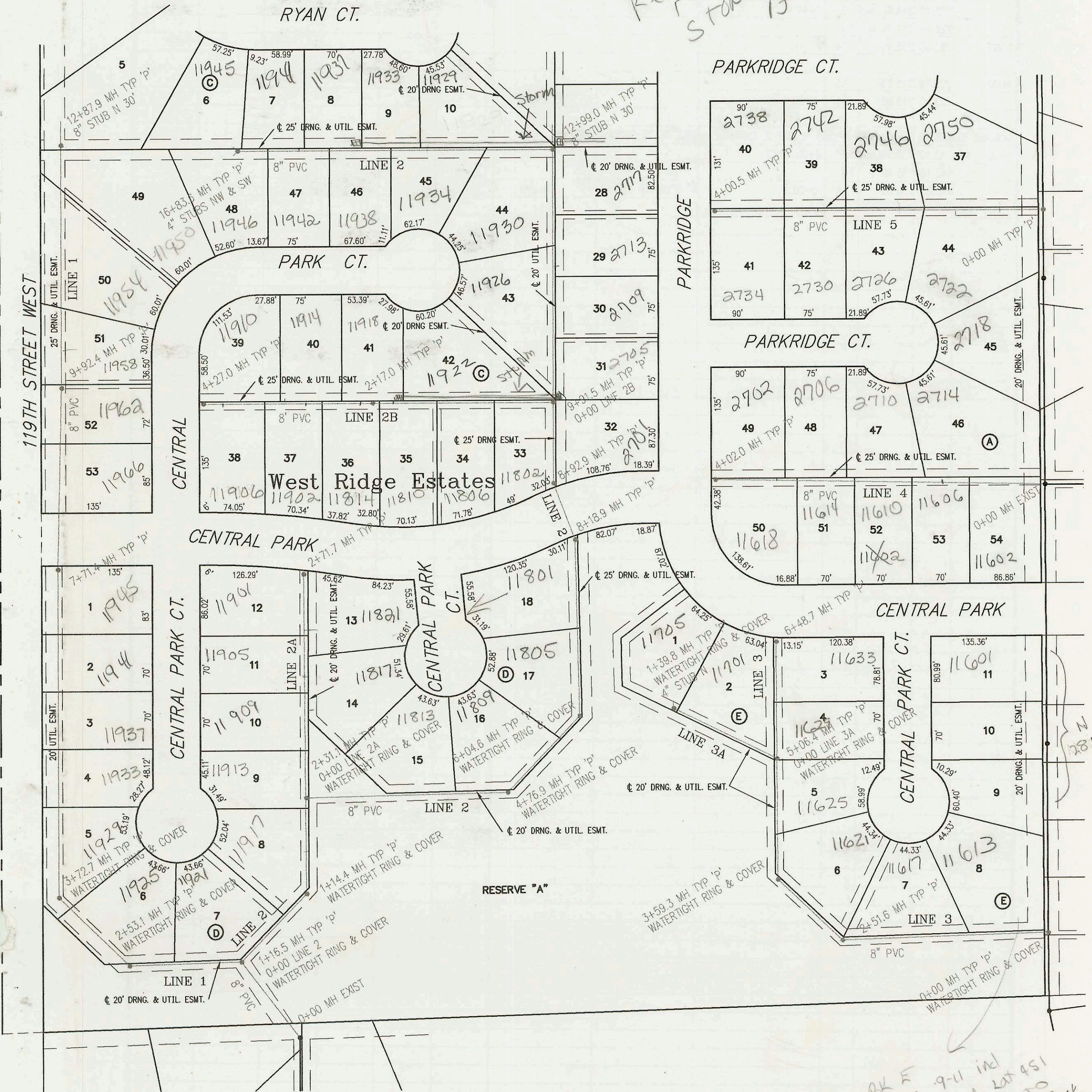


LATERAL 451, SOUTHWEST INTERCEPTOR SEWER
PROJECT NO. 468-83102 (743840)
BUILT BY UTILITY CONTRACTORS INC..
BOOKED 10/24/00 PER AS BUILT PLAN



SCALE: 1" = 100'

Refer to storm book A-497



*BK E
LOTS 9-11 incl
in BLP for lot 451
but connecting to
lot 369 see book
N 282 for MH
1178*

CONSTRUCTION RECORD						SERVICE RECORD						
STATION	ELEVATION		DEPTH	MANHOLE	4-INCH "Y" BRANCHES		No. of Permit		House Number		DATE OF PERMITS	
	GROUND	GRADE			North West	South East	North West	South East	North West	South East	North West	South East
L-2 LATERAL 451	SOUTHWEST INTERCEPTOR SEWER (CONT. FROM P-148)											
15+00	174.70	167.24	7.5			4" SCH40 Saddle 15+27.8 4" SCH40 16+10.6	2002-02200 2001-01617 2001-01099	11937 11938 11942	Central Pkct Central Pkct Central Pkct	4-23-02	6-20-01 5-3-01	
16+00	174.90	167.65	7.3									
	176.10	168.00	8.1	16+83.6	4" STUB NW 168.35	4" STUB SW 168.35	2002-01007 2001-01097	11945 W RYAN CT	11946 W Central Pkct	4-9-02	5-3-01	
0+00 L-2A	170.40	160.75	9.7	0+00 = 2+31.2 L-2	4" SCH40 Saddle 0+37		2001-01740	11913 W Central Pkct		7-13-01		
1+00	171.20	161.17	10.0			1+06 4" E 4V16H	2001-02828 2001-01216	11904 Central Pkct	11817 Central Pkct	11-6-01	1-4-02	
2+00	172.20	161.60	10.6			2+04 4" E 3V16H	2001-02972	11905 N Central Pkct		5-17-01		
	172.60	161.90	10.7	2+71.70				11901 Central Pkct	11821 W Central Pkct		1-4-02	
0+00 L-2B	172.70	163.58	9.1	0+00 = 9+91.5 L-2					11800 W Central Pkct		4-6-01	
1+00	172.90	163.88	9.0			0+59 4" N 6V16H	2001-02830	11922 Central Pkct		11-7-01		
2+00	172.40	164.19	8.2			4" SCH40 Saddle 1193.6			11816 Central Pkct		4-12-01	
	172.90	164.24	8.7	2+17.0	4" SCH40 Saddle 2+25	4" SCH40 Saddle 2+33.0	2001-01100	11918 W Central Pkct	11814 W Central Pkct	5-3-01	5-17-01	
3+00	173.90	164.49	9.4			4" SCH40 DL TAP 2+96	2001-02006	11914 Central Pkct	11902 W Central Pkct	8-14-01	5-3-01	
4+00	174.00	164.79	9.2			4" SCH40 Saddle 3+24 4" SCH40 Saddle 3+78	2001-01102	11910 Central Pkct	11906 W Central Pkct	10-2-01	5-3-01	
	174.50	164.87	9.6	4+27.0								
0+00 L-3	170.80	160.71	10.1	0+00 EXIST								
1+00	170.00	161.01	9.0				2001-03032	11613 Central Pkct		11-28-01		
2+00	170.80	161.32	9.5				2002-00133	11617 Central Pkct		1-14-02		
	171.40	161.47 out	9.9	2+51.6								
	171.40	161.57 in	9.8									
3+00	170.70	161.72	9.0					2002-00642	11621 W Central Pkct		3-16-02	
	170.40	161.90 out	8.5	3+59.3								
	170.40	162.00 in	8.4									
4+00	170.00	162.13	7.9									
5+00	170.00	162.43	7.6									
	170.40	162.45 out	8.0	5+06.4 = 0+00 L-3A				2001-02282	11625 W Central Pkct		4-12-01	
	170.40	162.55 in	7.8					2001-02781	11600 Central Pkct		11-7-01	
6+00	172.30	164.17	8.1			4" SCH40 Saddle 6+29.7	2001-01198		11633 W Central Pkct		5-16-01	
	173.50	165.00	8.5	6+48.7								
0+00 L-3A	170.40	162.55	7.8	0+00 = 5+06.4 L-3								
1+00	170.00	163.66	6.3				2001-0499	11701 Central Pkct		6-18-01		
	170.40	164.10	6.3	1+39.8	4" STUB N 164.45		2001-02442	11705 W Central Pkct		10-2-01		
0+00 L-4	174.30	161.66 out	12.6	0+00 EXIST								
	174.30	161.83 in	12.5									
1+00	173.60	162.57	11.0	0+52 4" N 8V21H	4" SCH40 PVC Saddle 1+23.6		2001-02359	2001-02053 Parkridge	11600 Central Pkct	9-20-01	8-16-01	
2+00	173.00	163.31	9.7		4" SCH40 PVC Saddle 2+32.6		2001-01896	2001-01986 Parkridge	11610 Central Pkct	8-1-01	8-13-01	
3+00	174.30	164.05	10.3		4" SCH40 Saddle 2+72.2		2001-01500	2001-02050 Parkridge	11614 W Central Pkct	6-7-01	8-16-01	
4+00					4" SCH40 Saddle 3+60	4" SCH40 Saddle 3+27	2001-01250	2001-01382 Parkridge	11618 Central Pkct	5-21-01	6-6-01	
	174.50	164.80	9.7	4+02.0								
0+00 L-5	175.70	162.53	13.2	0+00								
1+00	175.20	163.72	11.5	0+51 4" N 8V16H	4" SCH40 Saddle 1+67		2001-00933	2001-02052 Parkridge	2722 Parkridge	3-8-02	8-16-01	
2+00	175.60	164.91	10.7	1+75 4" N 7V16H	4" SCH40 Saddle 2+01.9		2001-01836	2001-01836 Parkridge	2726 N Parkridge	3-10-02	7-24-01	
3+00	175.90	166.10	9.8		4" SCH40 Saddle 2+75.5 4" SCH40 Saddle 3+49.5		2001-01095 2002-00644	2001-01375 Parkridge	2730 N Parkridge 2734 N Parkridge	3-11-02	6-6-01	
4+00	175.70	167.30	8.4	4+00.5								
	11905 W	Central Pkct		SW	2001-01216-51761	Padgett Ex					Exits house 16' SE Corner	
	11814 W	Central Pkct		SW	2001-01217-51761	Padgett Ex					Exits house 8' W of NE Corner	

*
*1