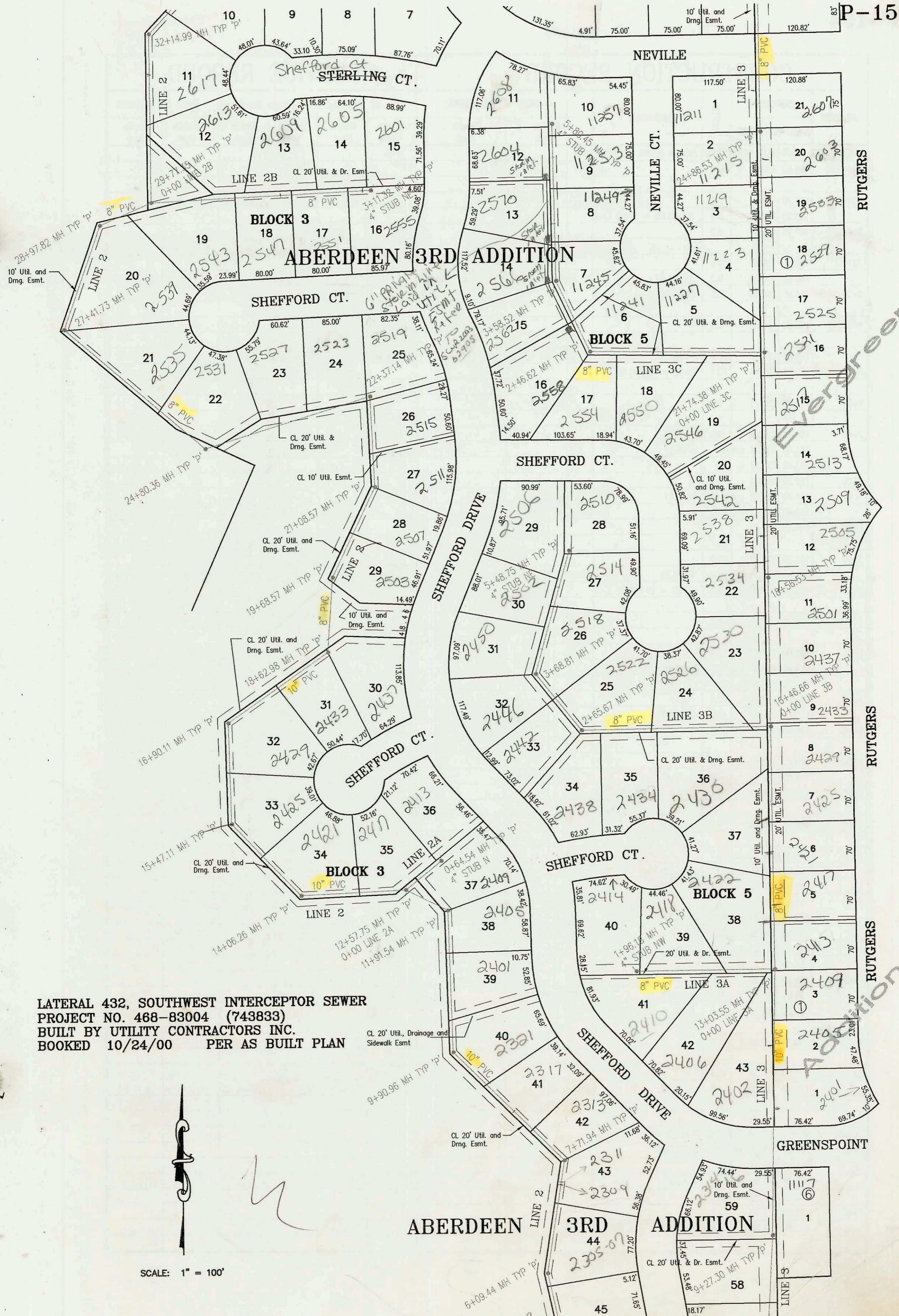


P154



LATERAL 432, SOUTHWEST INTERCEPTOR SEWER  
 PROJECT NO. 468-83004 (743833)  
 BUILT BY UTILITY CONTRACTORS INC.  
 BOOKED 10/24/00 PER AS BUILT PLAN

CL 20' Util., Drainage and Sidewalk Esmt

SCALE: 1" = 100'

Evergreen

see P-151

CONSTRUCTION RECORD						SERVICE RECORD							
STATION	ELEVATION		DEPTH	MANHOLE	4-INCH "Y" BRANCHES		No. of Permit		House Number		DATE OF PERMITS		
	GROUND	GRADE			North West	South East	North West	South East	North West	South East	North West	South East	
LATERAL 432, SOUTH WEST INTERCEPTOR SEWER (CONT. FROM P-152)													
0+00	L-2C	166.70	161.45	5.3	0+00 = 35+10.42			2001-02126		2629 Shefford Ct		8-31-01	
		167.40	161.65	5.8	0+65.45			2002-00822		2633 Shefford Ct		3-22-02	
0+00	L-2D	167.40	162.77	4.6	0+00 = 39+12.63 L-2	4" SCH 40 0+21 Saddle		2001-00345		2658 N Shefford		2-16-01	
1+00		170.30	163.07	7.2		4" SCH 40 0+95.89 Saddle		2001-00347		2701 N Shefford		2-16-01	
		171.30	163.11	8.2	1+14.89								
		170.90	163.28	7.6	1+70.29								
2+00		170.00	163.37	6.6		4" SCH 40 2+03.29 Saddle		2001-00702	0709 Shefford	2682 Shefford Ct	10/17/04	3-30-01	
3+00		168.30	163.67	4.6				2001-00716		2696 Shefford		6-19-02	
		168.40	163.73	4.7	3+29.61			2002-01715		2694 Shefford		6-19-02	
0+00	L-3	165.00	151.59	13.4	0+00 = 16+72.22 L-1								
					0+78.5 4" N 8V14H			2002-00501		2217 N Shefford		3-5-02	
1+00		164.10	151.79	12.3									
2+00		164.50	151.99	12.5		4" SCH 40 2+05 4" N 9V14H		2004-00699	2001-00357	2216-18 Shefford	11301 W 21st	3-16-04	2/26/01
		164.50	152.15 out	12.4	2+80.36								
		164.50	152.25 in	12.3									
3+00		164.00	152.29	11.7				2001-00731				4-17-01	
4+00		163.10	152.49	10.6		4" SCH 40 4+15.2		2001-00921		2222 N Shefford		4-17-01	
5+00		162.70	152.69	10.0									
6+00		163.50	152.89	10.6				2002-00851		2234 N Shefford		3-26-02	
		164.60	153.05	11.6	6+80.36	4" SCH 40 PVC 6+70.36		2005-03179		2240 Shefford		12-27-05	
7+00		164.20	153.09	11.1		7+32.36		2005-0318		2244 Shefford		1-10-01	
						7+42		2001-01155		2247 Shefford		7-16-01	
8+00		164.00	153.29	10.7				2005-02766		2302 Shefford		9-27-03	
9+00		163.40	153.49	9.9									
		163.60	153.54	10.1	9+27.30								
10+00		166.90	153.69	13.2		4" SCH 40 PVC 9+54.3 Saddle		2003-01327		2341 N Shefford		5-16-03	
11+00		168.30	153.89	14.4									
						11+06 4" E 10V19H		2002-02263		2401 Rutgers		12-15-03	
12+00		166.40	154.09	12.3		11+97 4" W 8V11H		2001-03295	2004-00677	2402 Shefford	2405 Rutgers	12-27-01	3-15-04
13+00									2004-00676		2409 Rutgers		3-15-04
		164.90	154.28	10.6	13+03.55 = 0+00 L-3A			2004-01		2413 Rutgers		6-20-04	
14+00		166.70	154.57	12.1		13+74 4" W 6V14H	13+94 4" E 9V14H	2001-02696	2005-00860	2422 N Shefford	2417 Rutgers	10-25-01	4-18-05
						14+65 4" E 10V14H		2005-00687		2421 Rutgers		3-28-04	
15+00		167.00	154.87	12.1		15+15 4" W 7V14H	15+34 4" E 10V14H	2002-03262		2435 Rutgers		12-15-03	
16+00		165.80	155.17	10.6		16+02 4" E 9V14H		2003-03052		2429 Rutgers		11-20-03	
		165.50	155.31	10.2	16+46.66 = 0+00 L-3B								
17+00		165.60	155.47	10.1		16+77 4" E 8V14H		2003-02102		2433 N Rutgers		8-11-03	
						17+23 4" W 6V14H	17+41 4" E 6V14H	2003-0315	2003-02748	2530 Shefford	2437 Rutgers	2-1-03	10-22-03
18+00		166.60	155.77	10.8		18+12 4" W 6V14H	18+12 4" E 8V14H	2002-00528	2003-00905	2534 N Shefford	2501 Rutgers	2-25-02	4-7-03
		167.60	155.94	11.7	18+56.53								
19+00		167.50	156.07	11.4		19+14 4" W 7V14H	18+80 4" E 10V14H	2001-01014	2001-01877	2538 N Shefford	2505 Rutgers	7-11-01	7-31-01
						19+52 4" E 5V14H		2002-00323	2002-01559	2546 N Shefford	2507 Rutgers	3-22-02	6-3-02
20+00		167.60	156.37	11.2		20+12 4" W 6V14H	20+23 4" E 9V14H	2001-02408	2001-01473	2542 N Shefford	2513 N Rutgers	9-26-01	7-13-01
								2001-02334		2517 Rutgers		9-19-01	
21+00		166.40	156.67	9.7				2001-02335		2521 Rutgers		9-19-01	
		166.10	156.90	9.2	21+74.38 = 0+00 L-3C								
22+00		165.80	156.97	8.8		4" SCH 40 PVC 22+30.38 Saddle		2001-01745		2525 N Rutgers		7-15-01	
						22+64 4" W 5V14H		2002-00254	2001-02780	11223 W Neville Ct	2524 Rutgers	1-28-02	11-1-01
23+00		167.00	157.27	9.7		4" SCH 40 23+63 4" W 5V14H		2001-02149	2002-01835	11219 W Neville	2533 N Rutgers	8-29-01	7-1-02
24+00		168.00	157.57	10.4		4" SCH 40 24+48 4" W 6V14H	24+48 4" E 9V14H	2001-0183	2002-02471	11215 W Neville	2603 Rutgers	7-11-01	2-21-02
		169.20	157.78	11.4	24+86.53								
25+00		169.20	157.87	11.3		4" SCH 40 25+28 4" W 7V14H		2001-01865	2002-01532	11211 W Neville	2607 Rutgers	7-30-01	6-5-02
26+00		169.90	158.17	11.7									
						26+87 4" W 6V14H	26+49 4" E 8V14H	2002-00490	2001-02212	11210 W Neville	2615 Rutgers	2-21-02	9-5-01
27+00		169.30	158.47	10.8									
		169.10	158.63	10.5	27+52.64 = 0+00 L-3D			2002-03201		2619 Rutgers		12-3-02	
28+00		169.00	158.77	10.2				2003-03202		2623 Rutgers		3-3-02	