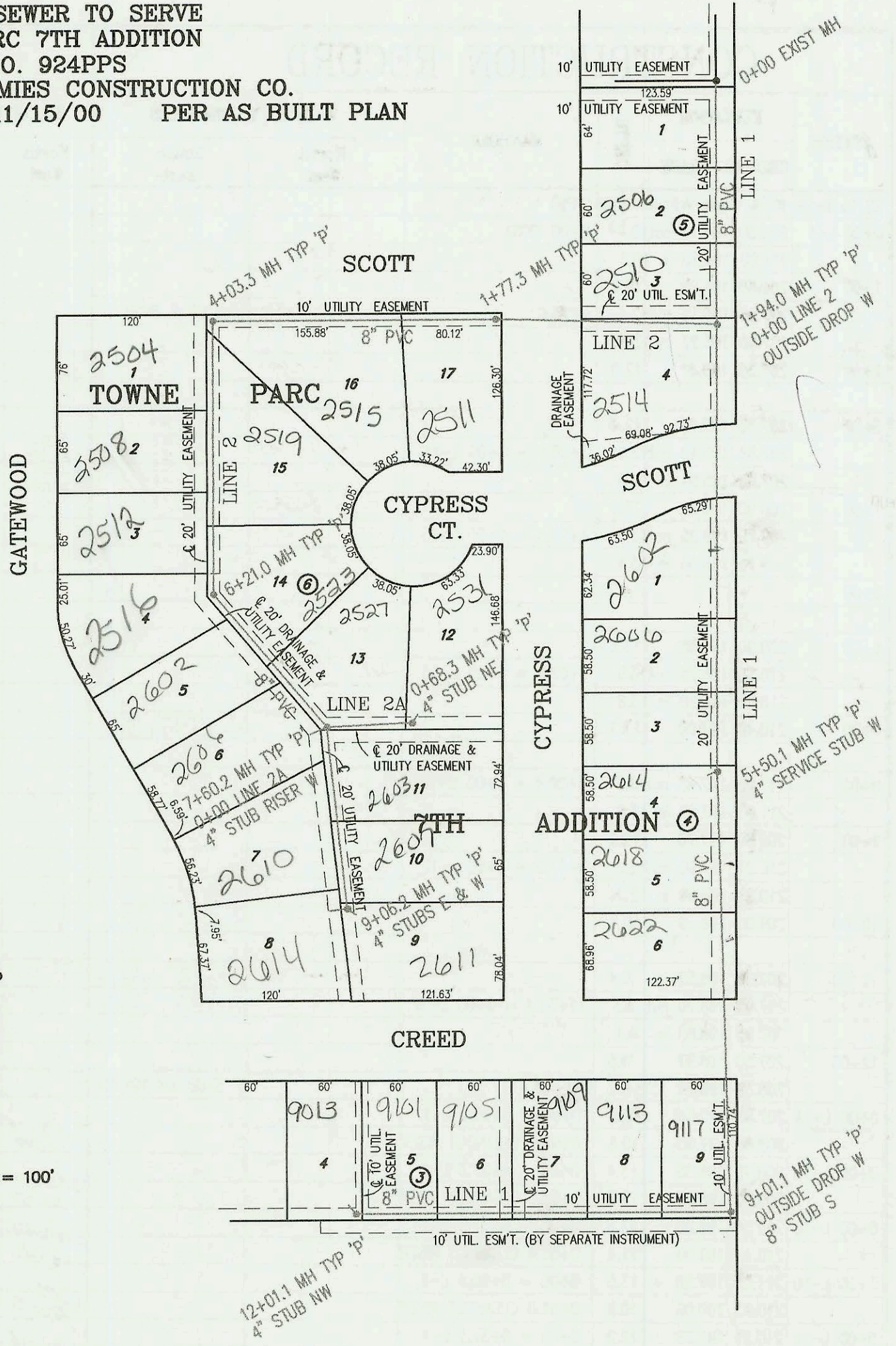
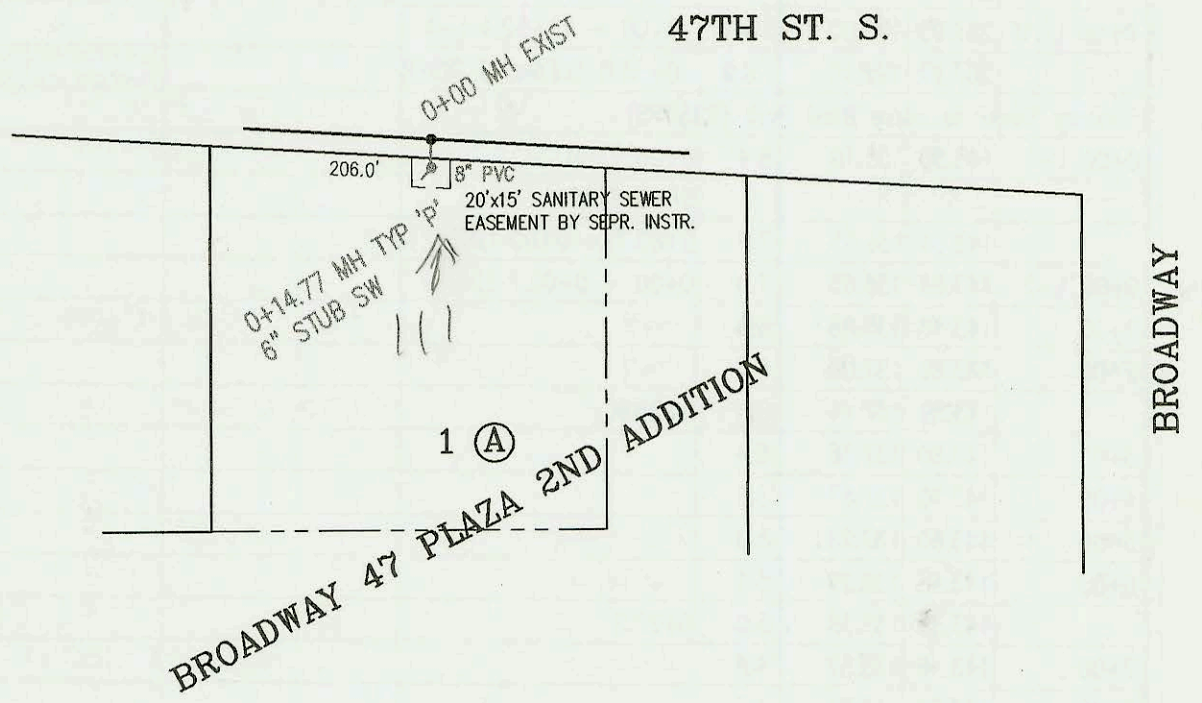


SANITARY SEWER TO SERVE
TOWNE PARC 7TH ADDITION
PROJECT NO. 924PPS
BUILT BY MIES CONSTRUCTION CO.
BOOKED 11/15/00 PER AS BUILT PLAN



SCALE: 1" = 100'



SCALE: 1" = 100'

SANITARY SEWER TO SERVE
PART OF LOT 1, BLK A,
BROADWAY 47 PLAZA 2ND ADDITION
PROJECT NO. 848PPS
BUILT BY McCULLOUGH EXCAVATION CO.
BOOKED 12/13/00 PER AS BUILT PLAN

CONSTRUCTION RECORD						SERVICE RECORD						
STATION	ELEVATION		DEPTH	MANHOLE	4-INCH "Y" BRANCHES		No. of Permit		House Number		DATE OF PERMITS	
	GROUND	GRADE			North West	South East	North West	South East	North West	South East	North West	South East
Sanitary Sewer to serve Towne Parc 7th Addition (924PPS)												
0+00	197.30	180.03	17.3	0+00 EXIST								
					0+26 4" W 13V5H							
1+00	197.50	180.38	17.1		4" 0+89 4" W 13V5H		2000-01080	2506 CYPRESS			5/2/00	
	198.63	180.71	out 17.9	1+94.0	1+52 4" W 13V5H		2002-01572	2510 CYPRESS			6/17/03	
	198.63	180.77	in 17.9									
2+00	198.30	180.79	17.5		2+21 4" W 14V5H		2003-01767	2514 CYPRESS			7-7-03	
3+00	200.30	181.12	19.2									
					3+74 4" W 16V5H		2003-02184	2602 CYPRESS			8-21-03	
4+00	201.70	181.44	20.3									
					4+48 4" W 17V5H		2004-02811	2606 CYPRESS			10-15-04	
5+00	203.00	181.77	21.2		5+08 4" W 18V5H							
	204.28	181.93	out 22.4	5+50.1	4" STUB RISER W 18V5H		2004-00724	2614 S CYPRESS			5-8-06	
	204.28	181.96	in 22.3									
6+00	205.30	182.17	23.1									
					4" sch 40 6+21 4" W 20V7H		2004-00897	2618 S CYPRESS			4-18-06	
7+00	207.90	182.58	25.3		6+82 4" W 21V9V		2005-009106	2622 CYPRESS			4-19-05	
8+00	208.70	183.00	25.7									
9+00	211.12	183.42	out 27.7	9+01.1	8" STUB S 183.62		2005-01667	9117 Creed			7-11-05	
	211.12	201.12	in 10.0		OUTSIDE DROP		2005-03319	9135 Creed			12-17-03	
10+00	211.80	201.69	10.1									
11+00	211.50	202.26	9.2				2004-00536	9109E Creed				
					4" sch 40 11+00		2004-02204	9105 E Creed			8-26-04	
12+00												
	213.20	202.84	10.4	12+01.1	4" STUB NW 203.15		2005-02992	9013 E. Creed			12-9-05	
0+00 L-2	198.63	180.71	out 17.9	0+00 = 1+94.0 L-1								
	198.63	186.77	in 11.9		OUTSIDE DROP							
1+00	198.70	187.55	11.1									
	198.25	188.16	out 10.1	1+77.3								2-9-05
	198.25	188.20	in 10.1									
2+00	198.00	188.38	9.6			2+16.3 4" sch 40	2005-00285	2511 CYPRESS			2-9-05	
3+00	198.80	189.16	9.6									
4+00						4" sch 40 3+17.3	2005-03077	2515 CYPRESS			1-25-06	
	201.71	189.97	out 11.7	4+03.3			2002-01141	2504 Gatewood			4-22-02	
	201.71	190.02	in 11.7									
5+00	204.20	191.79	12.4			5+08.3 4" sch 40	2002-00154	2508 Gatewood	2519 CYPRESS		1-16-02	6-8-05
6+00	206.10	193.62	12.5				2002-02921	2512 Gatewood			4-3-02	
	206.99	194.00	out 13.0	6+21.0			2002-02455	2510 Gatewood			1-9-03	
	206.99	194.10	in 12.9				2003-01234	2502 Gatewood	2523 CYPRESS		9-6-02	5-7-03
7+00	207.40	194.59	12.8				2003-03210	2527 CYPRESS			12-8-03	
	208.30	194.96	out 13.3	7+60.2 = 0+00 L-2A	4" STUB RISER W 9V15H		2002-01163	2600 Gatewood	2605 CYPRESS		6-12-02	2-24-03
	208.30	195.01	in 13.3									
8+00	208.70	195.37	13.3				2002-01137	2603 Gatewood	2607 CYPRESS		4-22-02	2-24-03
9+00	210.60	196.28	14.3									
	211.00	196.34	14.7	9+06.2	4" STUB W 196.61 4" STUB E 196.61		2002-01888	2604 Gatewood	2611 CYPRESS		7-10-02	4-18-03
0+00 L-2A	208.30	195.05	13.3	0+00 = 7+60.2 L-2								
	207.33	195.67	11.7	0+68.3	4" STUB NE 195.98		2004-03088	2531 CYPRESS			11-20-01	
San. Sewer to serve part of Lot 1, Blk A, Broadway 47 Plaza 2nd Addn. (848PPS)												
0+00	86.48	72.39	out 14.1	0+00 EXIST								
	86.48	74.36	in 12.1									
	87.80	76.05	11.8	0+14.77		6" STUB SW 76.21	99-3150-1	111 E 47TH STS			2/25/99	