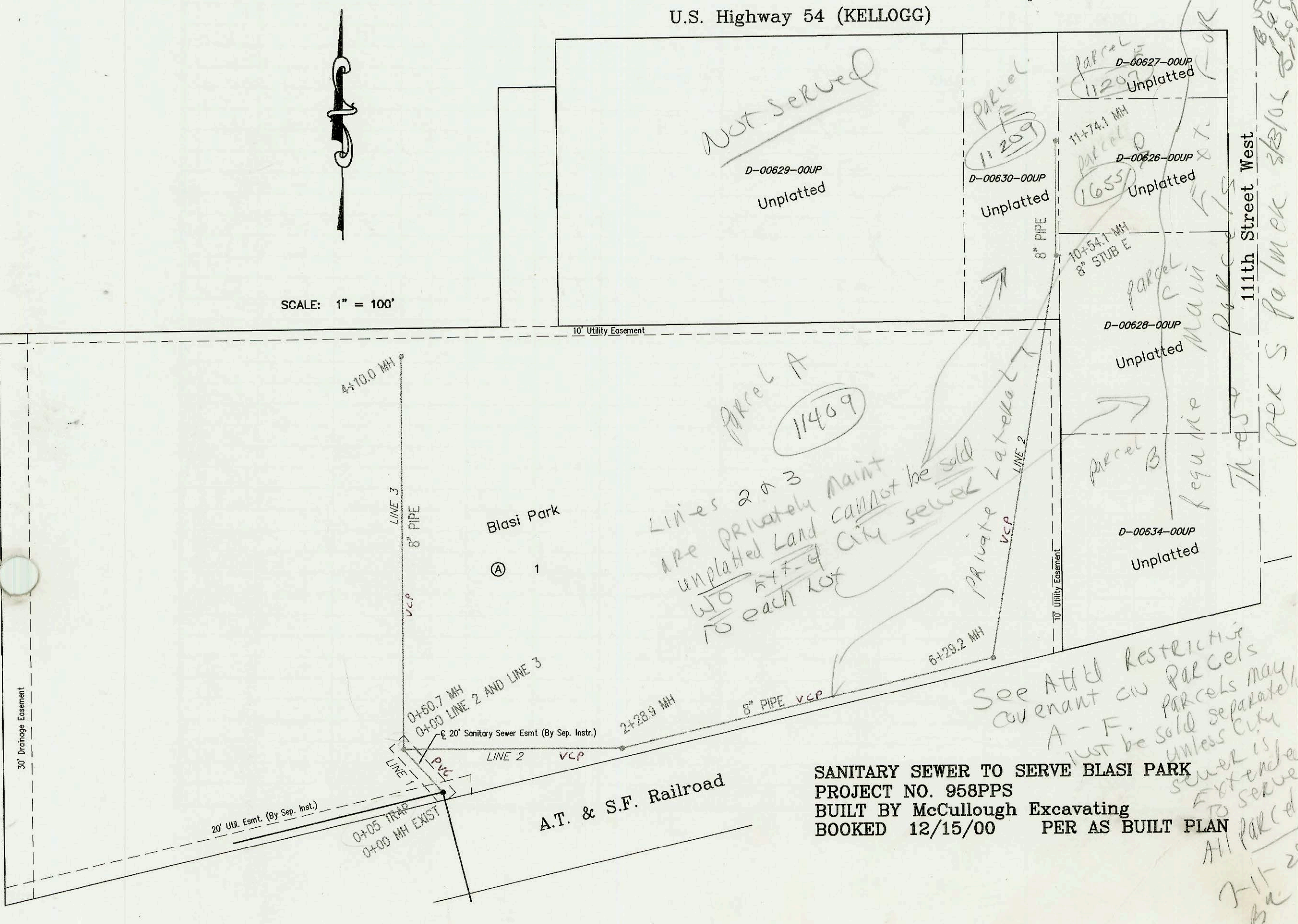


SANITARY SEWER TO SERVE
WILLOW PLACE ADDITION
PROJECT NO. 1051PPS
BUILT BY MIES CONSTRUCTION CO.
BOOKED 12/1/00 PER AS BUILT PLAN

SCALE: 1" = 100'

*4/24/05
allow
to any am.
prev. line
big
big
big*



SANITARY SEWER TO SERVE BLASI PARK
PROJECT NO. 958PPS
BUILT BY McCullough Excavating
BOOKED 12/15/00 PER AS BUILT PLAN

*Parcel A
11409
Lines 2 & 3
are privately owned
unplatted land
w/o RTF-C
to each lot*

*See Attd Restrictive
Covenant on Parcels
A-F. Parcels may
not be sold separately
unless city
sewer is
extended
to serve
all parcels
7-11-200
Ba*

*11th Street West
Per S farmek 3/3/05
big
big
big*

