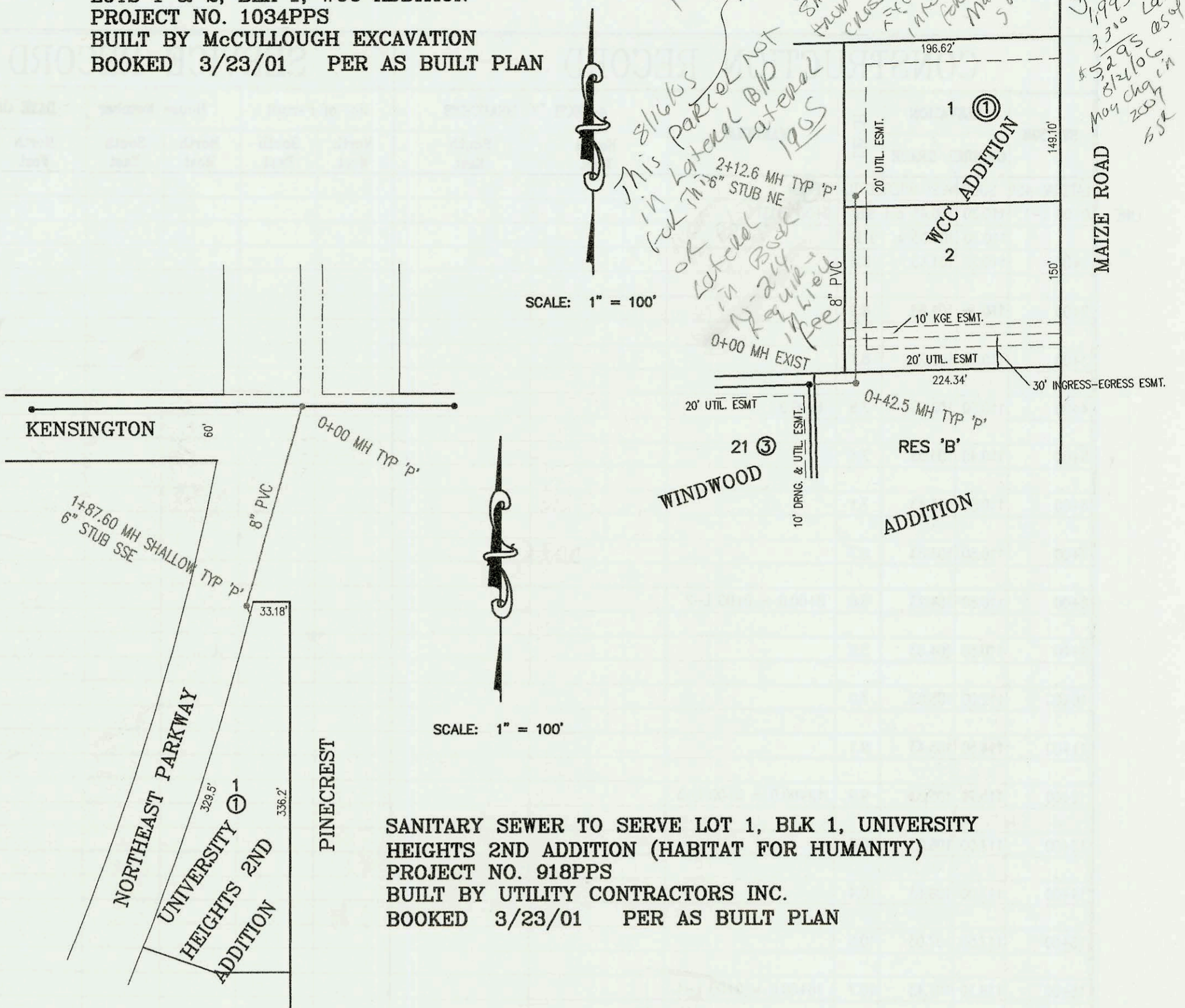


SANITARY SEWER TO SERVE
 LOTS 1 & 2, BLK 1, WCC ADDITION
 PROJECT NO. 1034PPS
 BUILT BY McCULLOUGH EXCAVATION
 BOOKED 3/23/01 PER AS BUILT PLAN

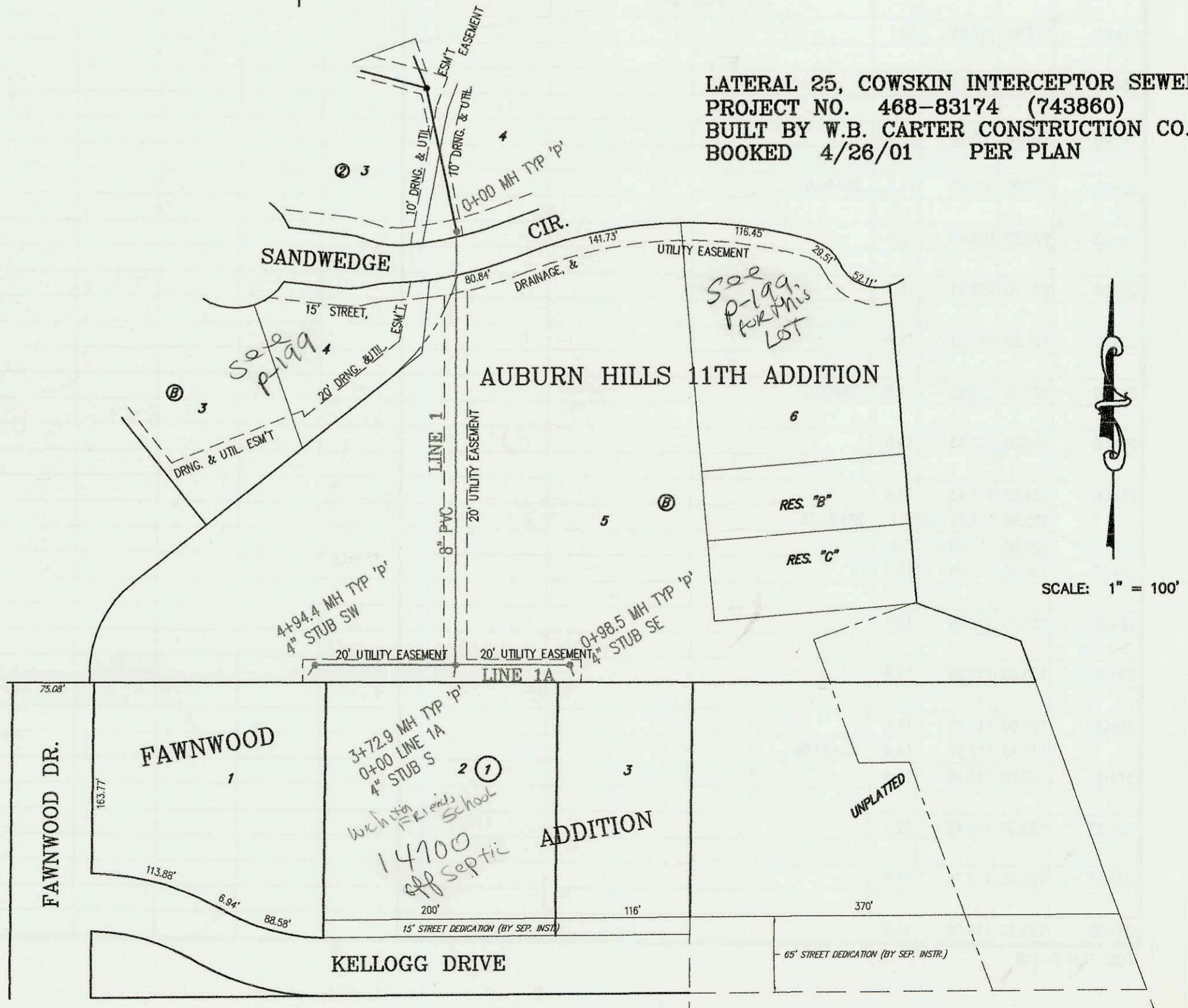
*1905 Main 200
 Rec'd
 from Mary Baker
 she said a line
 from new add
 crosses to Kirk
 7th Prec. & 7th
 Main Ave. Line
 5005 to 5000
 1995 map
 2300 Lat
 52295
 812106
 May chg in
 2007
 558*

P-168A



SANITARY SEWER TO SERVE LOT 1, BLK 1, UNIVERSITY
 HEIGHTS 2ND ADDITION (HABITAT FOR HUMANITY)
 PROJECT NO. 918PPS
 BUILT BY UTILITY CONTRACTORS INC.
 BOOKED 3/23/01 PER AS BUILT PLAN

LATERAL 25, COWSKIN INTERCEPTOR SEWER
 PROJECT NO. 468-83174 (743860)
 BUILT BY W.B. CARTER CONSTRUCTION CO.
 BOOKED 4/26/01 PER PLAN



US HIGHWAY 54

CONSTRUCTION RECORD						SERVICE RECORD						
STATION	ELEVATION		DEPTH	MANHOLE	4-INCH "Y" BRANCHES		No. of Permit		House Number		DATE OF PERMITS	
	GROUND	GRADE			North West	South East	North West	South East	North West	South East	North West	South East
SANITARY SEWER TO SERVE LOTS 1 & 2, BLK 1, WCC ADDITION (1034PPS)												
0+00	163.20	154.50	8.7	0+00 EXIST								
	162.02	154.67	7.4	0+42.5								
1+00	164.00	154.90	9.1									
						1+33.6 4" E						
2+00	164.00	155.30	8.7									
	164.18	155.35	8.8	2+12.6	6" STUB NE							
SANITARY SEWER TO SERVE LOT 1, BLK 1 UNIVERSITY HEIGHTS 2ND ADDITION (HABITAT FOR HUMANITY) 918PPS												
0+00	211.79	205.20 out	6.6	0+00								
	211.79	205.48 in	6.3									
1+00	211.50	205.86	5.6									
	211.45	206.19	5.3	1+87.6		6" STUB SSE 206.34						
LATERAL 25, COWSKIN INTERCEPTOR SEWER												
0+00 L-1	200.00	193.70	6.3	0+00								
1+00	198.00	194.00	4.0									
2+00	197.30	194.30	3.0									
3+00	198.80	194.60	4.2									
	201.40	194.82 out	6.6	3+72.9 = 0+00 L-1A		4" STUB S 195.15						
	201.40	194.92 in	6.5									
4+00	201.00	195.00	6.0									
	201.50	195.29	6.2	4+94.4		4" STUB SW 195.62						
0+00 L-1A	201.00	194.92	6.1	0+00 = 3+72.9 L-1		4" STUB S 4" STUB S 4" STUB S 0+12 TAP	2001-01905 2001-01906	14700 W Kellogg 14700 W Kellogg	- East SWR - West SWR	8-1-01 8-1-01		
	198.90	195.22	3.7	0+98.6		4" STUB SE 195.55						
LATERAL 459, SOUTHWEST INTERCEPTOR SEWER (CONT. FROM P-169)												
LINE 1	125.80	114.17	11.6	34+37.06		8" STUB S 114.70						
	35+00	125.00	114.43	10.6								
	36+00	124.90	114.83	10.1								
	37+00	124.80	115.23	9.6								
	38+00	124.70	115.63	9.1								
		125.50	115.67	9.8	38+11.45							
	39+00	124.50	116.03	8.5								
	40+00	124.50	116.43	8.1								
	41+00	124.20	116.83	7.4								
		124.70	117.17	7.5	41+85.84	8" STUB W 117.37						
LINE 2	0+00 L-2	110.80	104.43	6.4	0+00 = 8+00.0 L-1							
		115.50	104.83	10.7	0+90.0	8" STUB NW 105.03	4" STUB NE 105.16					
LINE 3	0+00 L-3	115.70	106.03	9.7	0+00 = 12+00.0 L-1							
		116.32	106.41	9.9	0+94.85		6" STUB NE 106.61					
LINE 4	0+00 L-4	118.10	107.63	10.5	0+00 = 16+00.0 L-1							
	1+00	117.40	108.03	9.4								
		118.00	108.07	9.9	1+10.0	4" STUB N 108.40						

SWR 2001-01905 - 81101 14700 W Kellogg MORRIS
 SWR 2001-01906 - 81101 14700 W Kellogg MORRIS