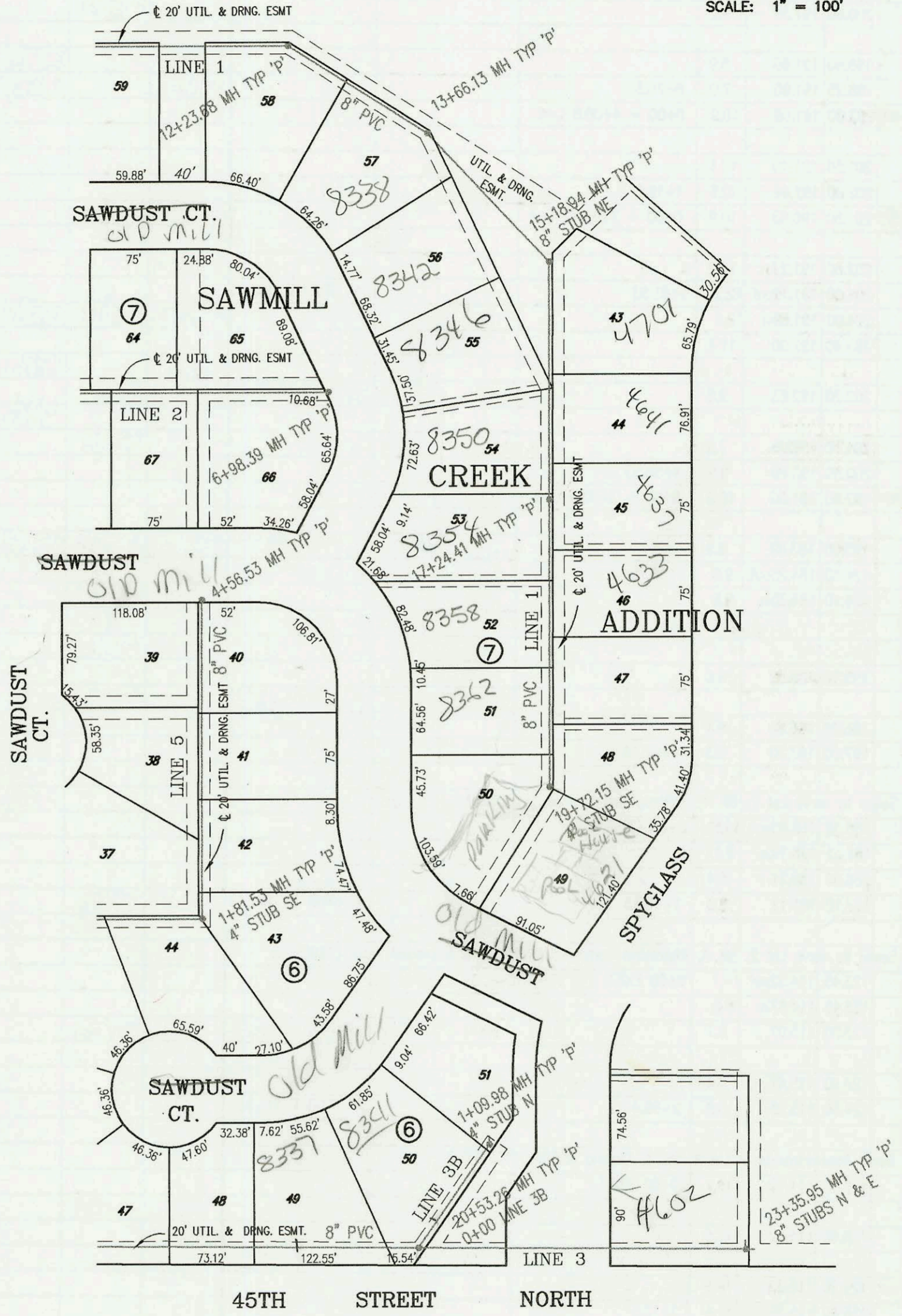


LATERAL 1, MAIN 11, SANITARY SEWER NO. 23
PROJECT NO. 468-83170 (743861)
BUILT BY NOWAK CONSTRUCTION
BOOKED 8/03/01 PER PLAN



SCALE: 1" = 100'



CONSTRUCTION RECORD						SERVICE RECORD						
STATION	ELEVATION		DEPTH	MANHOLE	4-INCH "Y" BRANCHES		No. of Permit		House Number		DATE OF PERMITS	
	GROUND	GRADE			North West	South East	North West	South East	North West	South East	North West	South East
LATERAL 1, MAIN 11, SANITARY SEWER				NO. 23 (CONT. FROM P-179)								
0+00 L-3	190.60	181.50	9.1	0+00 = 1+05.02 L-1								
1+00	191.60	180.79	10.8									
2+00	191.60	182.09	9.5									
3+00												
	192.00	182.42	9.6	3+03.9 = 0+00 L-6								
4+00	191.60	180.79	10.8									
5+00	191.60	182.09	9.5									
6+00												
	192.00	183.42out	8.6	6+02.13								
	192.00	183.52in	8.5									
7+00	192.80	183.89	8.9									
8+00	193.70	184.26	9.4									
9+00	194.70	184.64	10.1									
	196.20	184.80out	11.4	9+42.24 = 0+00 L-3A								
	196.20	184.90in	11.3									
10+00	196.00	185.47	10.5		9+94.24 4"sch 40 10+71.24 4"sch 40			2004-02301 2005-00090	8157 Old Mill 8161 Old Mill		6-23-05 1-18-05	
11+00	197.40	186.47	10.9									
12+00	198.90	187.46	11.4									
	200.50	188.26out	12.2	12+80.35								
	200.50	188.36in	12.1									
13+00	200.20	188.42	11.8									
14+00	201.00	188.72	12.3									
					14+43 4" N 8V5H							
15+00	201.70	189.02	12.7									
					15+43 4" N 8.5V5H			2005	8209 Old Mill		2-17-05	
16+00	202.50	189.32	13.2									
	203.60	189.58out	14.0	16+84.81 = 0+00 L-4								
	203.60	189.68in	13.9									
17+00	203.10	189.73	13.4									
					17+37 4" N 9V5H							
18+00	203.60	189.90	13.7									
					18+62 4" N 9.5V5H							
19+00	204.10	190.33	13.8									
					19+49 4" N 9.5V5H			2003-03396	8337 E Old Mill		12-16-02	
20+00	204.60	190.64	14.0									
	205.20	190.80out	14.4	20+53.26 = 0+00 L-3B								
	205.30	190.90in	14.4									
21+00	206.40	191.04	15.4									
22+00	207.70	191.34	16.4									
23+00	205.30	191.64	13.7									
	205.00	191.75	13.3	23+35.95	8" STUB N 191.85	8" STUB E 191.85						
0+00 L-3A	196.20	184.90	11.3	0+00 = 9+42.24 L-3	0+23 4"sch 40 PVC			2005-00689	8149 Old Mill		4-18-05	
1+00	200.20	186.81	13.4									
	201.20	187.04	14.2	1+18.99								
0+00 L-3B	205.20	192.90	12.3	0+00 = 20+17.19 L-3								
					0+24 4" NW 8V7H			2002-02994	8341 Old Mill		1-5-02	
1+00	206.20	194.93	11.3									
	206.80	195.14	11.7	1+09.98	4" STUB N 195.81							
0+00 L-4	203.60	189.68	13.9	0+00 = 16+84.81 L-3								
					0+38 4" N 9.5V7H			2003-01231	8213 Old Mill		5-7-03	
1+00	203.10	189.98	13.1									
					1+33 4"sch 40			2004-03076	8325 Old Mill		1-24-05	
2+00	202.00	190.28	11.7									
	201.50	190.53out	11.0	2+82.17 = 0+00 L-5								
	201.50	190.63in	10.9					2003-03394	8301 E Old Mill		12-16-02	
3+00	201.60	190.68	10.9									
								2003-03393	8353 E Old Mill		12-16-02	