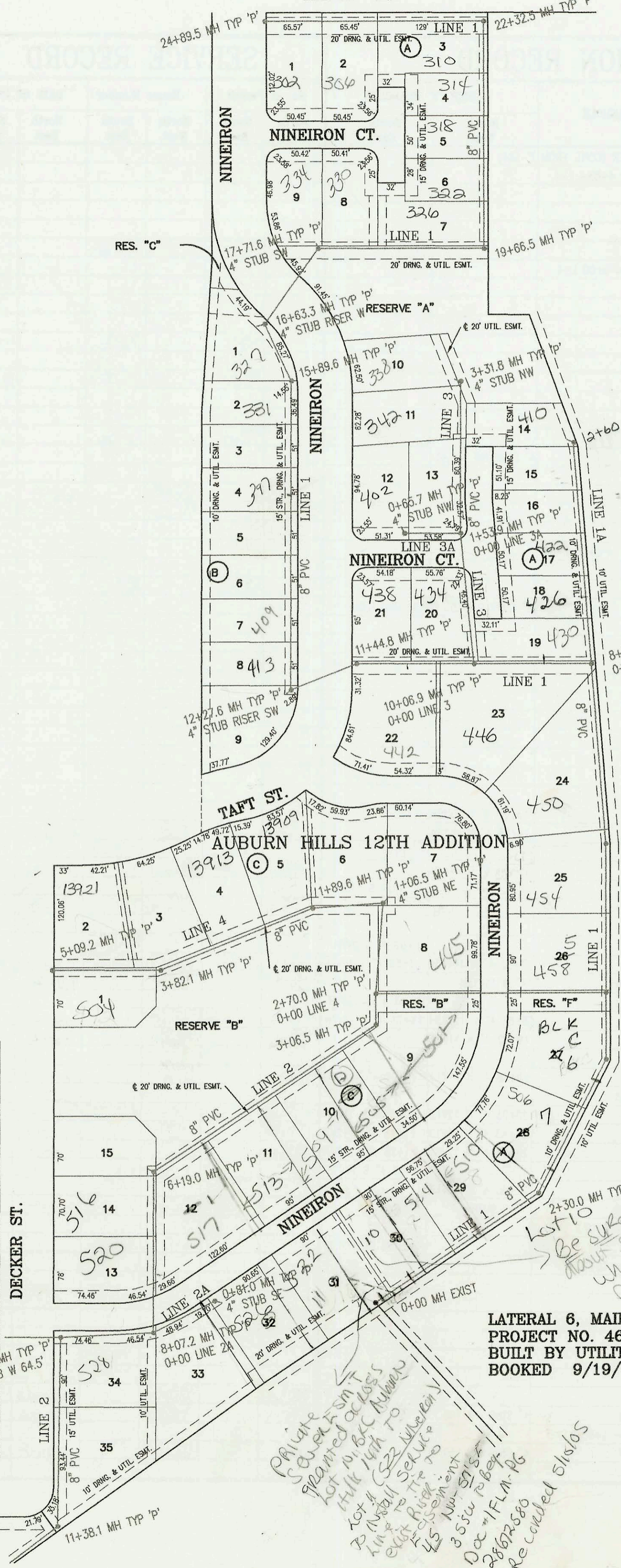


MAPLE ST.



11301  
E. D. Wong



SCALE: 1" = 100'

LATERAL 6, MAIN 2, COWSKIN INTERCEPTOR SEWER  
 PROJECT NO. 468-83178 (743859)  
 BUILT BY UTILITY CONTRACTORS  
 BOOKED 9/19/01 PER PLAN

Lot 10 Be sure to make comment  
 about servicing for 522  
 when issuing sewer  
 permit for Lot 10  
 & 6

Private SMIT  
 painted across  
 lot 10, blk C, Auburn  
 Hills 14th to  
 install service  
 to the  
 45' New-515  
 8' 5/8" riser  
 Doc # 1FLM-PG  
 28672580  
 Re-called 5/15/05

For Main 2  
 Reg Main 2  
 (CO) Fed by Utility

Valley St.

13 12

CONSTRUCTION RECORD						SERVICE RECORD								
STATION	ELEVATION		DEPTH	MANHOLE	4-INCH "Y" BRANCHES		No. of Permit		House Number		DATE OF PERMITS			
	GROUND	GRADE			North West	South East	North West	South East	North West	South East	North West	South East		
LATERAL 6, MAIN 2, COWSKIN INTERCEPTOR SEWER														
0+00 L-1	171.00	149.37	21.6	0+00 EXIST										
					0+10 4" W 17V10H			2003-01122		522 NINEIRON		5-12-05		
1+00	169.90	150.69	19.2		0+50 4" W 16V5H									
					1+45 4" W 15V5H			2004-01067		514 NINEIRON		4-15-04		
2+00	169.60	152.00	17.6											
	169.90	152.40 out	17.5	2+30.0	2+07.5 4" scn 40 top			2006-02113		510 S. NINEIRON		9-19-06		
	169.90	152.50 in	17.4		2+60 4" W 13V5H			2004-02246		504 NINEIRON		10-6-04		
3+00	168.60	152.82	15.8											
					3+79 4" W 11V5H									
4+00														
	168.20	153.30 out	14.9	4+05.4										
	168.20	153.40 in	14.8											
	164.00	153.80 out	10.2	4+83.4 = 0+00 L-2										
	164.00	153.90 in	10.1											
5+00	162.50	153.95	8.6											
6+00	163.60	154.35	9.3											
	165.00	154.60 out	10.4	6+57.7										
	165.00	154.70 in	10.3											
7+00	165.20	154.87	10.3											
					7+34 4" 7V5H			2005-01734		450 S. NINEIRON		7-15-05		
8+00	166.40	155.27	11.1											
	167.70	155.55 out	12.2	8+69.4 = 0+00 L-1A										
	167.70	155.65 in	12.1											
9+00	167.60	155.77	11.8		9+25 4" 8V12H	9+30 4" 8V8H			2002-1604	2003-02895	430 NINEIRON	446 Auburn	6-14-02	11-6-03
10+00	168.90	156.17	12.7											
	169.20	156.20 out	13.0	10+06.9 = 0+00 L-3										
	169.20	156.30 in	12.9		10+29 4" 9V8H			2003-01170		434 NINEIRON		5-1-03		
11+00	170.70	156.71	14.0		11+04 4" 10V8H	10+84 4" 10V12H			2005-03780	2005-01834	438 NINEIRON	442 NINEIRON	2-3-06	7-22-05
	172.50	156.90 out	15.6	11+44.8										
	172.50	157.00 in	15.5											
12+00	172.50	157.23	15.3											
	172.90	157.35 out	15.6	12+27.6		4" SW 12V10H								
	172.90	157.45 in	15.5		12+50 4" W 12V7H			2002-00738		413 NINEIRON		3-18-02		
13+00	172.50	157.78	14.7		13+01 4" W 11V7H			2001-02925		409 NINEIRON		11-15-01		
					13+52 4" W 11V7H									
14+00	172.10	158.24	13.9		14+03 4" W 10V7H									
					14+54 4" W 10V7H			2002-00739		397 NINEIRON		3-18-02		
15+00	171.50	158.69	12.8		15+05 4" W 9V7H									
	171.00	159.10 out	11.9	15+89.6	15+56 4" W 9V7H									
	171.00	159.20 in	11.8											
16+00	170.80	159.24	11.6											
	170.50	159.50 out	11.0	16+63.3	4" W 7V11H			2002-0023		387 NINEIRON		5-9-02		
	170.50	159.60 in	10.9											
17+00	170.10	159.77	10.3											
	169.90	160.10 out	9.8	17+71.6	4" STUB NW 160.55			2002-00415		334 S NINEIRON		2-14-02		
	169.90	160.20 in	9.7											
18+00	169.30	160.32	9.0		18+87.5 4" scn 40 top			2002-00414		305 NINEIRON		2-14-02		
									2006-02115		326 S NINEIRON		8-22-06	
19+00	168.50	160.73	7.8											
	168.40	161.00 out	7.4	19+66.5										
	168.40	161.10 in	7.3											
20+00	168.50	161.24	7.3											
21+00	170.00	161.65	8.3											
22+00	170.00	162.07	7.9											
	169.40	162.20 out	7.2	22+32.5										
	169.40	162.30 in	7.1											
23+00	169.80	162.64	7.2											
					23+81 4" scn 40			2005-00599		306 NINEIRON		3-14-05		
24+00	171.00	163.15	7.8											
	175.10	163.40	11.7	24+89.5										
					24+44.5 4" scn 40			2005-00598		302 S NINEIRON		3-24-05		
0+00 L-1A	167.70	155.65	12.1	0+00 = 8+69.4 L-1										
					0+75 4" W 9V5H			2002-00412		426 S NINEIRON		2-14-02		
1+00	168.70	157.13	11.6											
2+00	167.40	158.61	8.8											
	167.00	159.50	7.5	2+60.0	4" STUB NW 159.85			2002-00411		422 S NINEIRON		2-14-02		
									2002-00411		410 S NINEIRON		9-25-02	

CONT. ON P-185

Sub 2005-00355 2-17-05 528 S. Decker Brand Hg