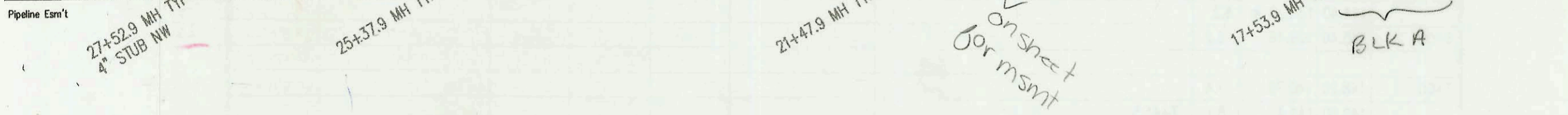
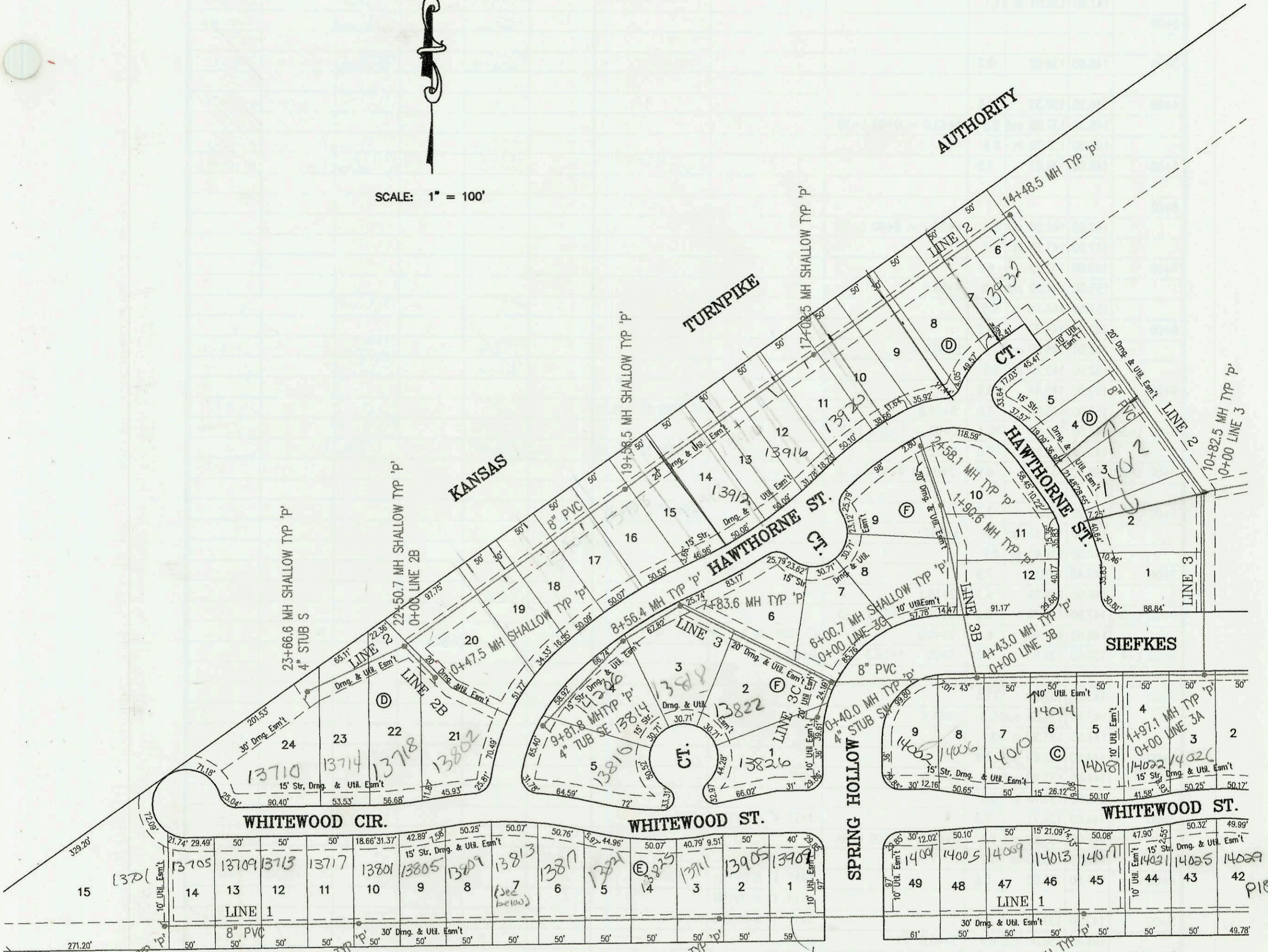


LATERAL 303, FOUR MILE CREEK SEWER
PROJECT NO. 468-83233 (743865)
BUILT BY MIES CONSTRUCTION CO.
BOOKED 9/20/01 PER PLAN



SCALE: 1" = 100'



2006-00017-13813 E Whitewood-33' East of West Prop. line - 2/13/06 (Newfarmer)

on sheet
for msmt

BLK A

P186

CONSTRUCTION RECORD						SERVICE RECORD						
STATION	ELEVATION		DEPTH	MANHOLE	4-INCH "Y" BRANCHES		No. of Permit		House Number		DATE OF PERMITS	
	GROUND	GRADE			North West	South East	North West	South East	North West	South East	North West	South East
LATERAL 303, FOUR MILE CREEK SEWER (CONT. FROM P-187)												
	147.60	136.31 out	11.3	1+97.1 = 0+00 L-3A								
	147.60	136.51 in	11.1									
2+00								2002-01789	14026 Whitewood			6-27-02
								2003-00714	14022 Whitewood			3-21-02
3+00	146.60	136.92	9.7					2004-00618	14014 Selfies			3-9-04
4+00	146.20	137.33	8.9					2003-00388	14010 Whiteleaf			2-11-03
	146.30	137.50 out	8.8	4+43.0 = 0+00 L-3B								
	146.30	137.70 in	8.6									
5+00	146.60	139.07	7.5		5+12.7 4"sch 40			2002-01993	14006 Whitewood			7-19-02
								2005-02196	14002 Whitewood			11-10-05
6+00												
	147.90	141.50 out	6.4	6+00.7 = 0+00 L-3C								
	147.90	141.70 in	6.2									
7+00	149.60	143.22	6.4									
	151.50	144.50 out	7.0	7+83.6								
	151.50	144.70 in	6.8									
8+00	151.40	144.77	6.6									
	152.00	145.00 out	7.0	8+56.4								
	152.00	145.20 in	6.8									
9+00	152.00	145.44	6.6									
	152.90	145.90	7.0	9+81.8								
					4" STUB SE 146.25							
0+00 L-3A	147.60	137.21	10.4	0+00 = 1+97.1 L-3								
	147.90	140.90	7.0	0+72.1								
					4" STUB SE 141.25							
0+00 L-3B	146.30	137.70	8.6	0+00 = 4+43.0 L-3								
1+00	146.20	138.47	7.7									
	147.60	139.17 out	8.4	1+90.6								
	147.60	139.42 in	8.2									
2+00	147.40	139.46	7.9									
	149.00	139.69	9.3	2+58.1								
0+00 L-3C	147.90	141.70	6.2	0+00 = 6+00.7 L-3								
	148.50	141.90	6.6	0+40.0								
					4" STUB SW 142.25							
0+00 L-4	139.80	129.93	9.9	0+00 = 1+56.3 L-1 = 0+00 L-2								
1+00	143.50	132.01	11.5									
	143.60	133.30 out	10.3	1+61.8								
	143.60	133.50 in	10.1									
2+00	143.50	133.69	9.8									
	144.60	133.90 out	10.7	2+42.6								
	144.60	134.10 in	10.5									
3+00	144.00	134.71	9.3									
	142.00	135.60 out	6.4	3+84.1 = 0+00 L-4A								
	142.00	135.80 in	6.2									
4+00	141.60	136.03	5.6									
					4+15 4" N 3V15H							
					4+64 4" N 3V15H							
5+00	143.20	137.43	5.8									
	144.40	138.00 out	6.4	5+40.8								
	144.40	138.20 in	6.2									
6+00	145.40	139.16	6.2									
					4+35.5 4"sch 40							
					4"sch 40							
					4"sch 40							
					4"sch 40							
7+00	148.20	140.79	7.4									
	149.60	141.47	8.1	7+41.5								
0+00 L-4A	142.00	135.80	6.2	0+00 = 3+84.1 L-4								
					4"sch 40							
					4"sch 40 PVC							
1+00	148.00	139.22	8.8									
	149.50	139.84	9.7	1+18.2								

N/C SWR2004-02332-14320 E Hawthorne - (22' North of South prop. line) - milwas covered

