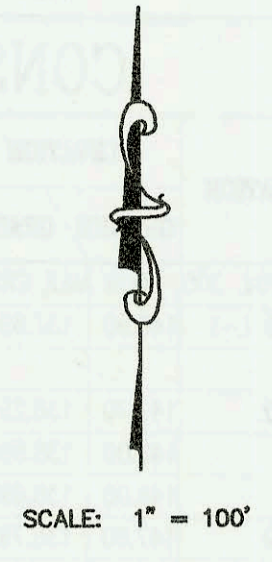
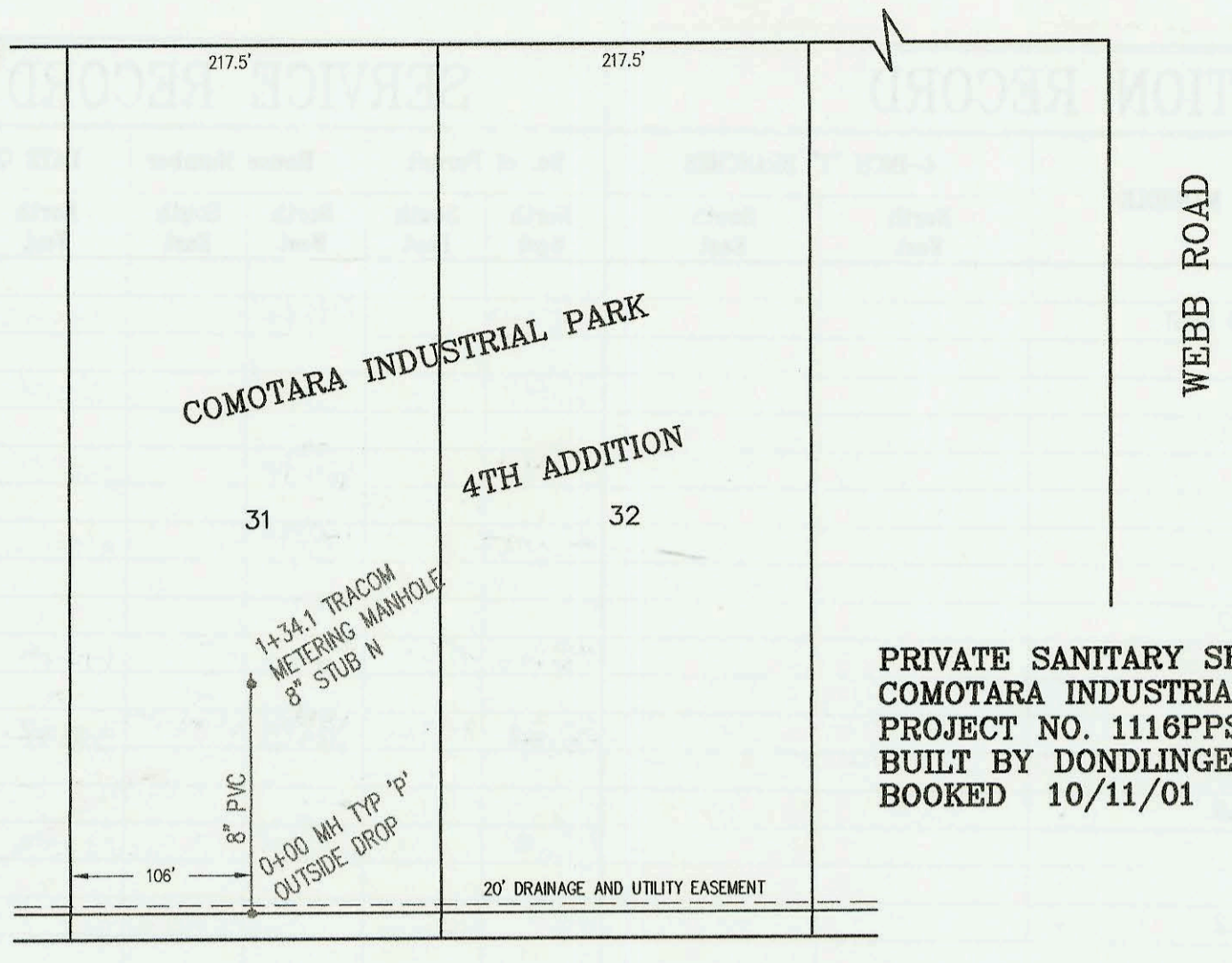
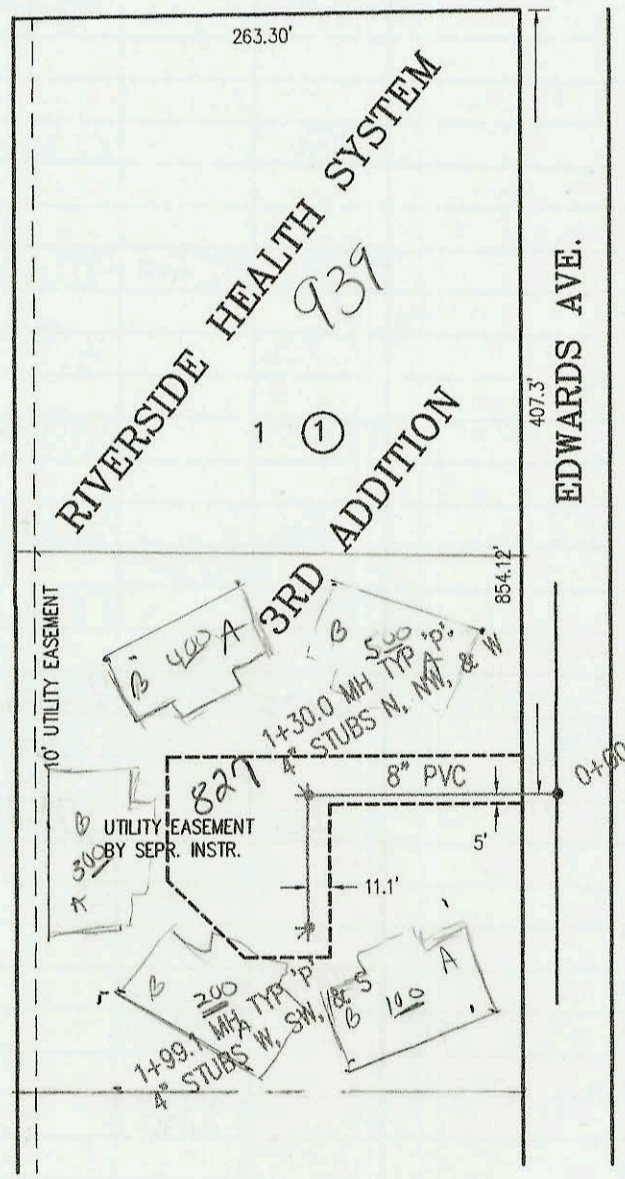


35TH ST. N.

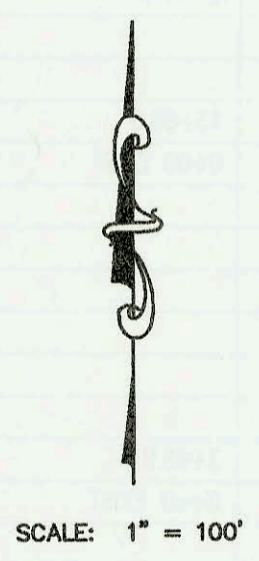


PRIVATE SANITARY SEWER TO SERVE LOTS 31 & 32,  
COMOTARA INDUSTRIAL PARK FOURTH ADDITION  
PROJECT NO. 1116PPS  
BUILT BY DONDLINGER AND SONS CONSTRUCTION CO.  
BOOKED 10/11/01 PER AS BUILT PLAN

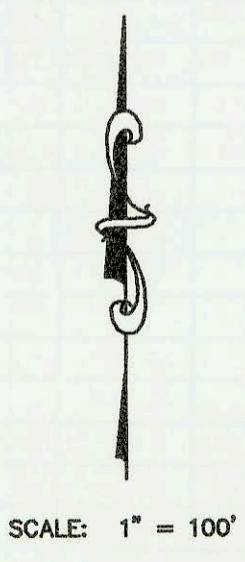
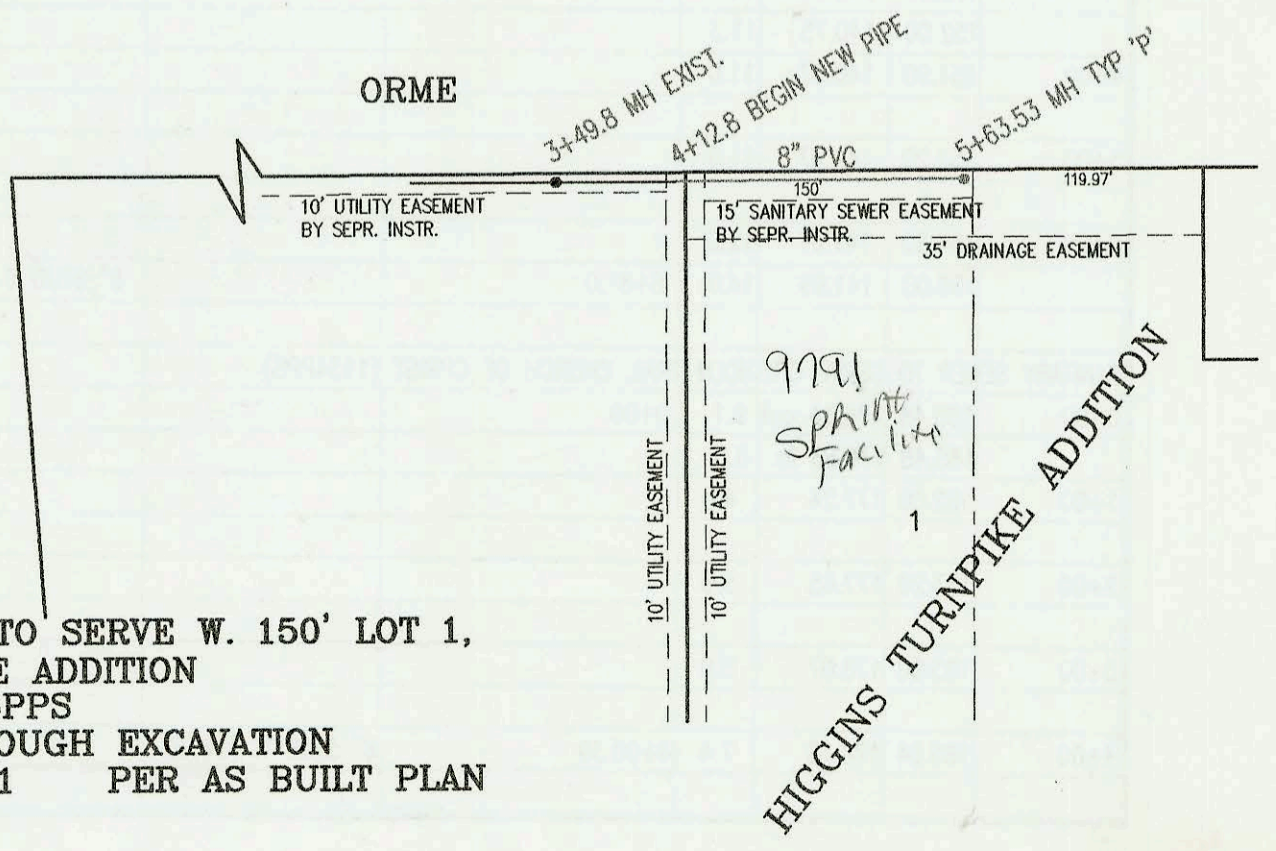
9TH ST. N.



SANITARY SEWER TO SERVE PART OF LOT 1, BLK 1,  
RIVERSIDE HEALTH SYSTEM 3RD ADDITION  
PROJECT NO. 1124PPS  
BUILT BY McCULLOUGH EXCAVATION  
BOOKED 10/11/01 PER AS BUILT PLAN



ORME



SANITARY SEWER TO SERVE W. 150' LOT 1,  
HIGGINS TURNPIKE ADDITION  
PROJECT NO. 1135PPS  
BUILT BY McCULLOUGH EXCAVATION  
BOOKED 10/11/01 PER AS BUILT PLAN

