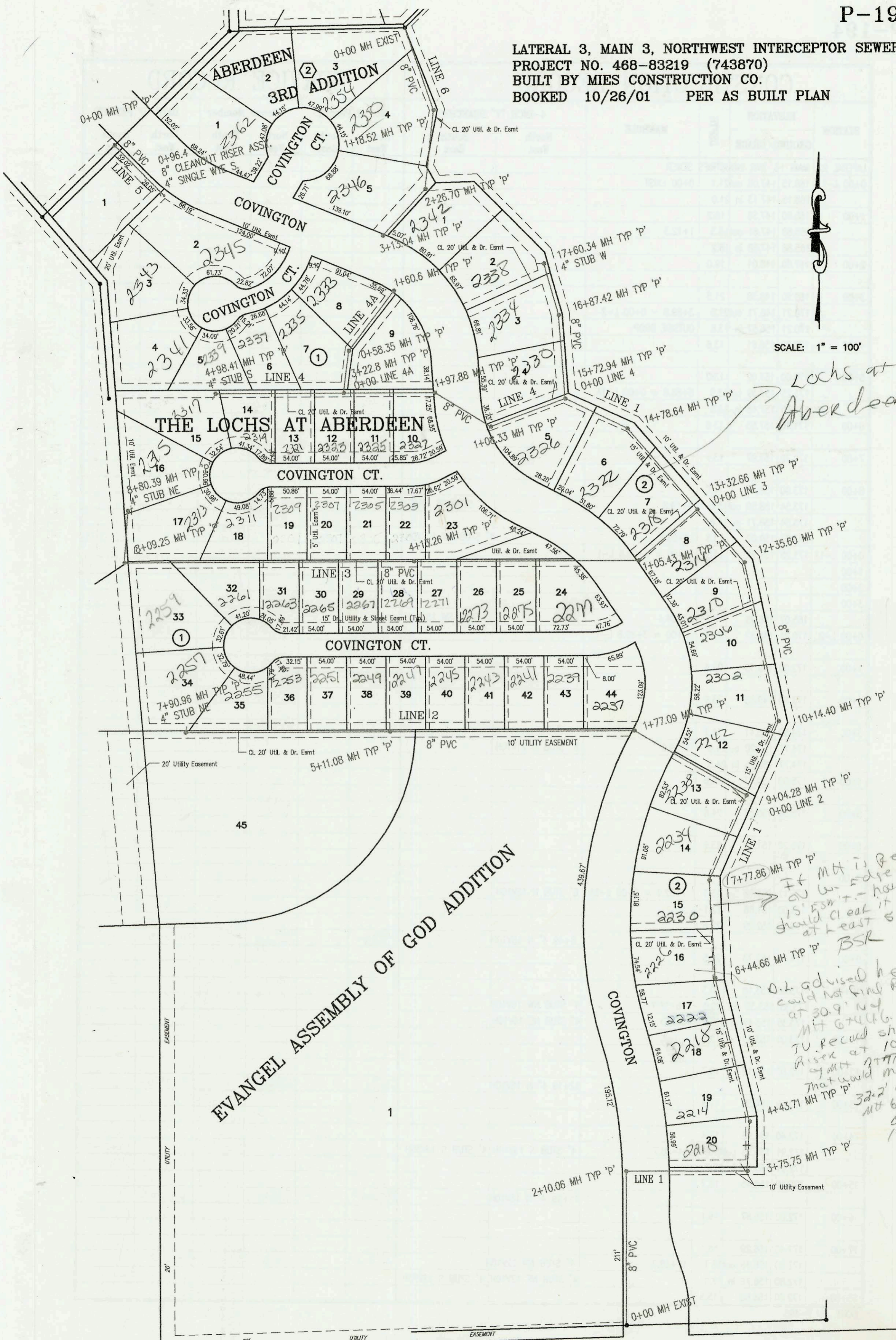


LATERAL 3, MAIN 3, NORTHWEST INTERCEPTOR SEWER
PROJECT NO. 468-83219 (743870)
BUILT BY MIES CONSTRUCTION CO.
BOOKED 10/26/01 PER AS BUILT PLAN



SCALE: 1" = 100'

Locks at Aberdeen

EVANGEL ASSEMBLY OF GOD ADDITION

If MH is really on W edge of 15' ESM + house should clear it by at least 6' BSR

O.L. advised he could not find riser at 30.9' and MH 6'x16'. TU recall shows riser at 10' s. of MH 7'x7'. That would make it 32.2' w of mt 6'x6 BSR 10/17/03

CONSTRUCTION RECORD						SERVICE RECORD							
STATION	ELEVATION		DEPTH	MANHOLE	4-INCH "Y" BRANCHES		No. of Permit		House Number		DATE OF PERMITS		
	GROUND	GRADE			North West	South East	North West	South East	North West	South East	North West	South East	
LATERAL 3, MAIN 3, NORTHWEST INTERCEPTOR SEWER													
0+00 L-1	165.90	149.80 out	16.1	0+00 EXIST									
	165.90	150.00 in	15.9										
1+00	166.00	150.40	15.6										
2+00	166.50	150.80	15.7										
	166.90	150.84 out	16.1	2+10.06									
	166.90	150.94 in	16.0										
3+00	166.30	151.32	15.0										
	165.40	151.64 out	13.8	3+75.75									
	165.40	151.74 in	13.7										
4+00	165.10	151.84	13.3		4+10.8 4" W 13V3H								
	165.40	152.02	13.4	4+43.71									
5+00	165.10	152.24	12.9		4+90.1 4" W 13V3H								
					5+54.8 4" W 13V3H								
6+00	164.90	152.64	12.3		6+18.9 4" W 12V3H	2004 00947		2222 Covington		4-9-04			
	165.40	152.82	12.6	6+44.66									
					6+75.5 4" W 12V3H	2003 02168		2226 Covington		9-23-03			
7+00	164.80	153.04	11.8		7+50.3 4" W 12V3H	2004 00948		2230 Covington		4-8-04			
	165.40	153.35	12.1	7+77.86				2238 Covington		9-23-03			
8+00	165.00	153.44	11.6										
					8+90 4" sch 40	2004 01752		2238 Covington		6-28-04			
9+00	165.00	153.82	11.2			2004 01731		2237 Covington		6-21-04			
	165.40	153.84	11.6	9+04.28 = 0+00 L-2									
10+00	165.00	154.23	10.8		9+53.4 4" sch 40	2004 01732		2242 Covington		6-21-04			
	165.40	154.29	11.1	10+14.40									
11+00	165.00	154.63	10.4										
12+00	164.80	155.04	9.8										
	165.40	155.18	10.2	12+35.60				2004 0214	2014 Covington		1-24-02		
13+00	164.90	155.45	9.5										
	165.40	155.58	9.8	13+32.66 = 0+00 L-3									
14+00	164.80	155.85	9.0					2002 02093	2218 Covington		11-5-02		
	165.40	156.16	9.2	14+78.64				2002 02092	2222 Covington		11-5-02		
15+00	165.00	156.25	8.7										
	165.40	156.56 out	8.8	15+72.94 = 0+00 L-4				2003 00061	2226 Covington		1-7-03		
	165.40	156.66 in	8.7										
16+00	165.00	156.77	8.2										
	165.40	157.12	8.3	16+87.42									
17+00	165.50	157.17	8.3										
	165.70	157.41	8.3	17+60.34	4" STUB W 157.74			2004	2252 Covington		3-1-04		
0+00 L-2	165.40	153.94	11.5	0+00 = 9+04.28 L-1									
1+00	166.00	154.34	11.7										
	166.60	154.68	11.9	1+77.09									
2+00	166.40	154.74	11.7		2+11.09 4" sch 40	2004 01731		2237 Covington		6-21-04			
3+00	166.40	155.14	11.3										
4+00	165.30	155.54	9.8										
5+00	166.00	155.94	10.1					2003 02042	2251 Covington		8-4-03		
	166.60	156.01	10.6	5+11.08				2002 01679	2249 N Covington		6-17-02		
6+00	167.10	156.34	10.8										
7+00	168.20	156.74	11.5					2003 02751	2255 Covington		10-23-03		
	167.80	157.13	10.7	7+90.96	4" STUB NE 157.46	2002 02207		2257 Covington		9-24-02			
0+00 L-3	165.40	155.68	9.7	0+00 = 13+32.66 L-1									
1+00	166.50	156.08	10.4										
	167.30	156.13	11.2	1+05.43									
2+00	166.50	156.48	10.0					2002 02694	2219 Covington		3-13-02		
3+00	166.30	156.88	9.4					2002 02184	2215 Covington		8-13-02		
								2002 01687	2301 Covington		6-17-02		
4+00	166.00	157.28	8.7					2002 02183	2273 Covington		8-13-02		
	166.70	157.36	9.3	4+13.26				2002 02509	2303 N Covington		9-11-02	9-11-02	
								2002 02508	2305 N Covington		9-11-02	9-11-02	
5+00	167.10	157.68	9.4					2002 01678	2267 N Covington		6-17-02		
								2002 02507	2265 N Covington		9-11-02	6-17-02	
6+00	168.10	158.08	10.0										