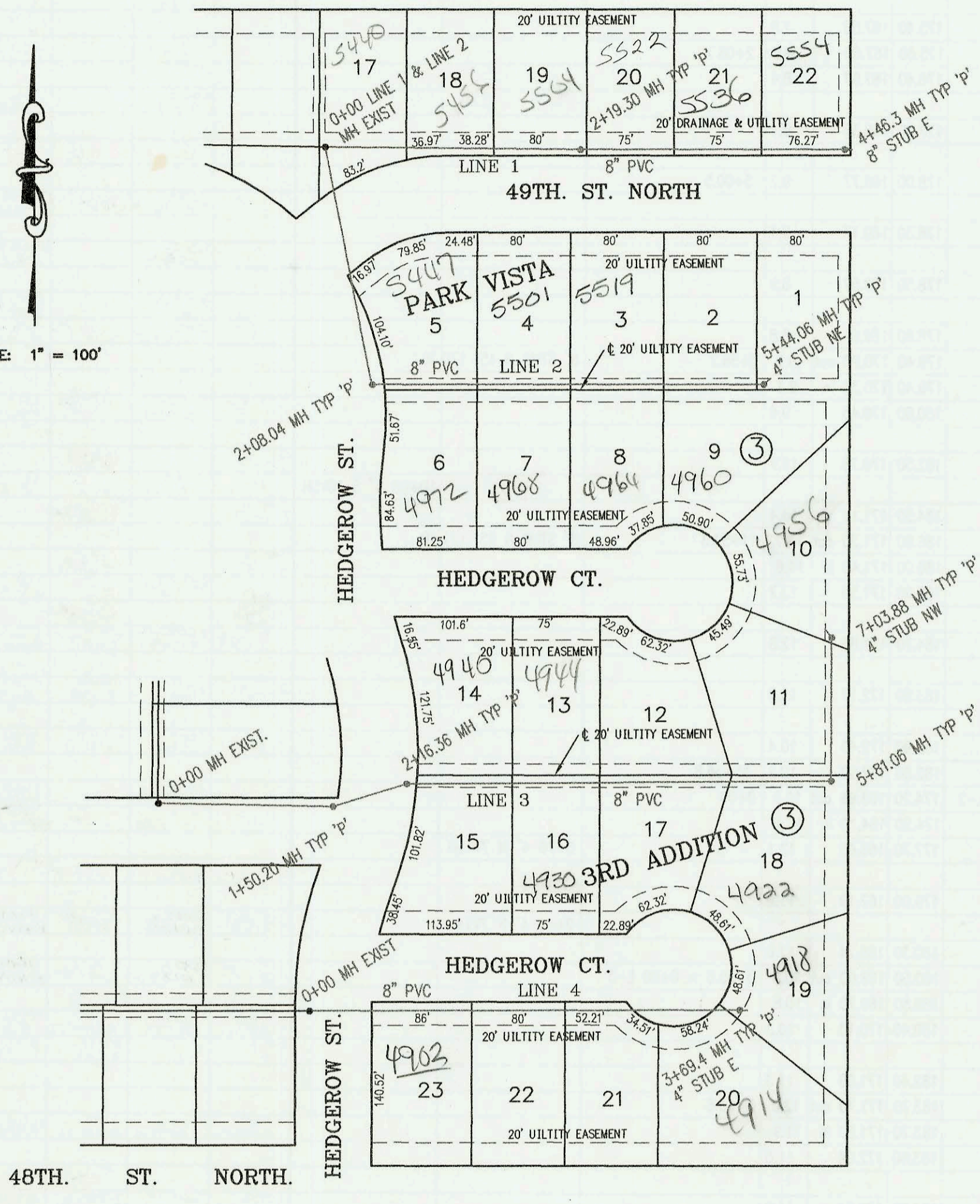
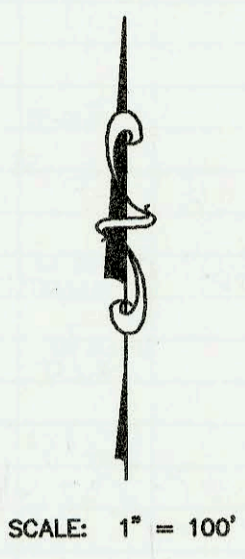


SANITARY SEWER TO SERVE  
PARK VISTA THIRD ADDITION (PHASE 4)  
PROJECT NO. 1136PPS  
BUILT BY MIES CONSTRUCTION CO.  
BOOKED 11/6/01 PER AS BUILT PLAN



CONSTRUCTION RECORD						SERVICE RECORD						
STATION	ELEVATION		DEPTH	MANHOLE	4-INCH "Y" BRANCHES		No. of Permit		House Number		DATE OF PERMITS	
	GROUND	GRADE			North West	South East	North West	South East	North West	South East	North West	South East
LATERAL 39, DISTRICT A, SANITARY SEWER NO. 21 (CONT. FROM P-196)								2003-00743		102 N Sheridan		3-24-03
0+00 L-4	115.40	102.63 out	12.8	0+00				2003-02728	106 N Mt Carmel			10-21-03
1+00	117.60	106.26	11.3									
2+00	118.00	107.91	10.1									
	118.90	109.00 out	9.9	2+65.69								
	118.90	109.10 in	9.8									
3+00	119.30	109.30 out	10.0	2+97.69				2004-01847	109 Mt Carmel			5-11-04
	119.30	109.40 in	9.9									
4+00	119.90	109.81	10.1				2003-00227	2003-00491	114 N Sheridan	113 Mt Carmel	1-3-03	8-21-03
							2003-00300	2003-02321	118 Sheridan	111 N Mt Carmel	1-8-03	9-4-03
5+00	120.80	110.22	10.6									
	121.70	110.39 out	11.3	5+42.69								
	121.70	110.49 in	11.2					2003-01822	121 N Mt Carmel			7-10-03
6+00	121.80	110.72	11.1				2003-01762	2004-02645	126 Sheridan	125 Mt Carmel	12-4-03	4-23-04
7+00	121.00	111.12	9.9		7+39.69 4" stub		2002-03286	2004-02883	130 Sheridan	125 Mt Carmel	12-16-02	10-26-04
	120.60	111.50	9.1	7+92.69								
Sanitary Sewer to serve Park Vista Third Addition - Phase 4 (1136PPS)												
0+00 L-1	234.41	223.17	11.2	0+00 EXIST = 0+00 L-2			2002-01144		540 E 49th			4-22-02
1+00	234.10	223.55	10.6				2002-01145		545 E 49th			4-22-02
2+00	235.10	223.93	11.2				2002-01146		551 E 49th			4-22-02
	235.73	224.00 out	11.7	2+19.3								
	235.73	224.05 in	11.7				2002-01405		553 E 49th			5-20-02
3+00	235.90	224.35	11.6				2002-00201		554 E 49th			1-28-02
4+00	236.60	224.72	11.9									
	237.68	224.89	12.8	4+46.3	8" STUB E 224.99							
0+00 L-2	234.41	223.19	11.2	0+00 EXIST = 0+00 L-1								
1+00	233.60	223.58	10.0									
2+00	233.60	223.98	9.6									
	234.24	224.01 out	10.2	2+08.04			2002-02306	2002-00638	540 E 49th	4972 Hedgerow	8-22-02	3-11-02
	234.24	224.03 in	10.2									
3+00	234.50	224.77	9.7				2002-01484	2002-00359	551 E 49th STN	4968 Hedgerow		2-11-02
4+00	235.00	225.58	9.4					2002-00360	5519 E 49th STN	4964 Hedgerow		2-11-02
5+00	236.00	226.39	9.6					2002-00013		4960 Hedgerow		1-2-02
	237.36	226.75	10.6	5+44.06	4" STUB NE 227.10							
0+00 L-3	235.41	222.36	13.1	0+00 EXIST								
1+00	235.20	224.29	10.9									
	235.80	225.26 out	10.5	1+50.2								
	235.80	225.35 in	10.5									
2+00	234.70	225.59	9.1									
	235.74	225.67 out	10.1	2+16.36			2002-02307		4940 Hedgerow			8-22-02
	235.74	225.74 in	10.0									
3+00	235.80	226.60	9.2					2002-00821		4930 E Hedgerow		3-22-02
4+00	236.80	227.62	9.2									
5+00	237.80	228.64	9.2					2002-00519		4922 Hedgerow		2-25-02
	239.77	229.47 out	10.3	5+81.06								
	239.77	229.70 in	10.1									
6+00	238.90	229.86	9.0									
7+00												
	240.13	230.74	9.4	7+03.88	4" STUB NW 231.08		2002-00014		4956 Hedgerow			1-2-02
0+00 L-4	236.06	224.08	12.0	0+00 EXIST								
1+00	236.60	226.29	10.3					2002-02633		4902 Hedgerow		9-24-02
2+00	239.10	228.50	10.6									
3+00	241.20	230.70	10.5					2002-01406		4914 Hedgerow		5-20-02
	242.75	232.24	10.5	3+69.54	4" STUB E 232.52		2002-02172		4918 Hedgerow			1-25-02