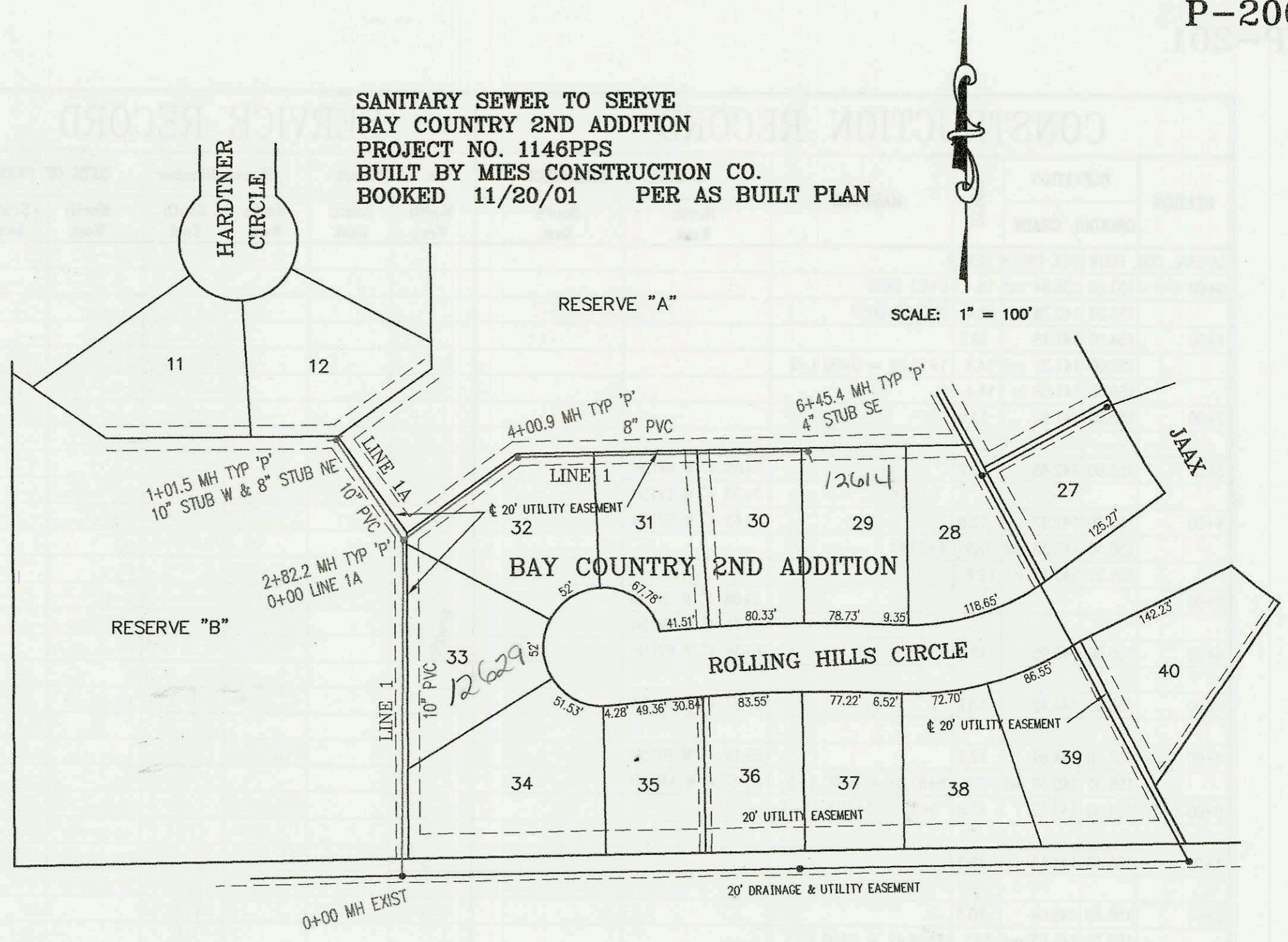
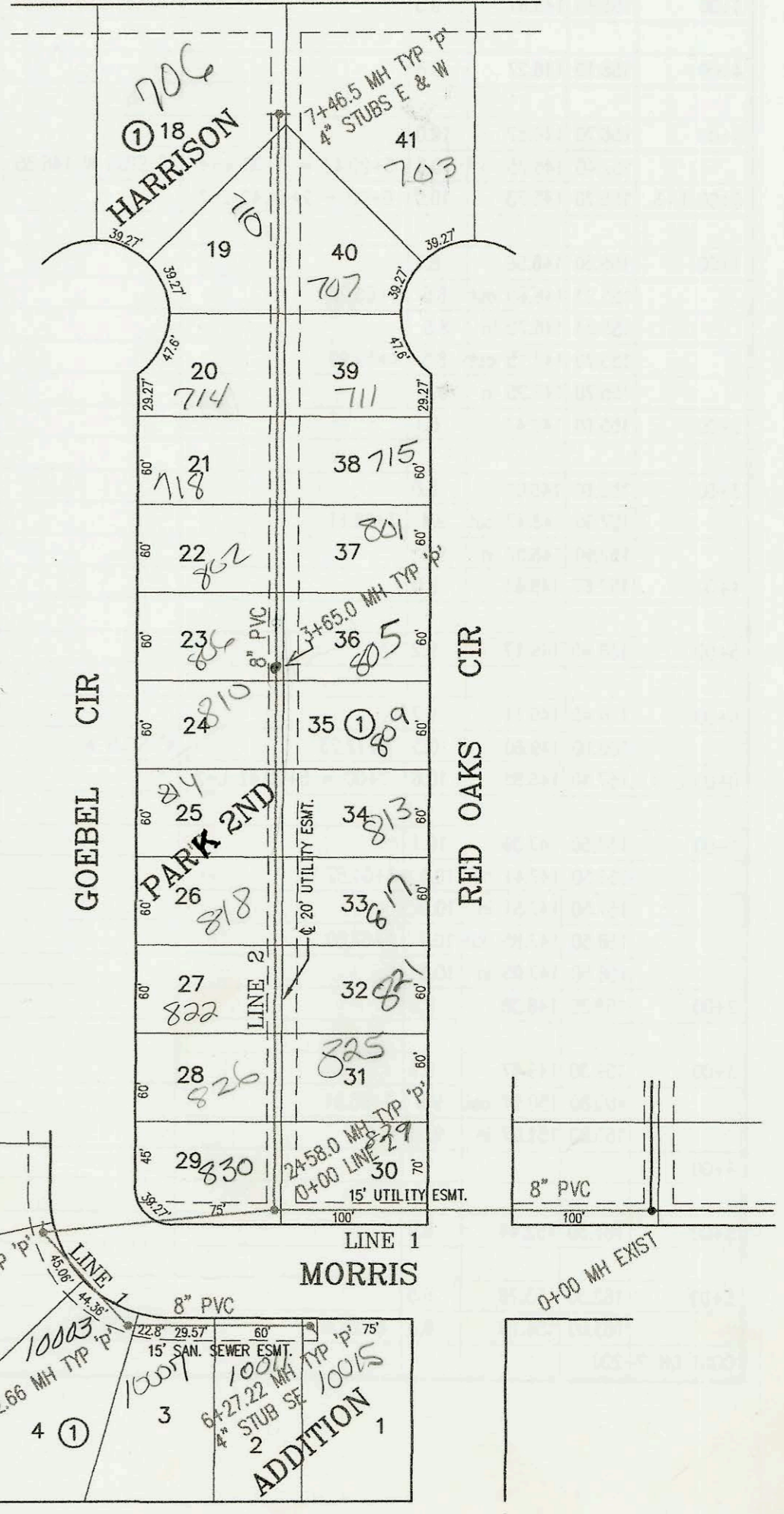


SANITARY SEWER TO SERVE  
BAY COUNTRY 2ND ADDITION  
PROJECT NO. 1146PPS  
BUILT BY MIES CONSTRUCTION CO.  
BOOKED 11/20/01 PER AS BUILT PLAN



SCALE: 1" = 100'

KANSAS TURNPIKE



SCALE: 1" = 100'

LATERAL 307, FOUR MILE CREEK SEWER  
PROJECT NO. 468-83275 (743881)  
BUILT BY K. C. EXCAVATING  
BOOKED 12/28/01 PER PLAN

