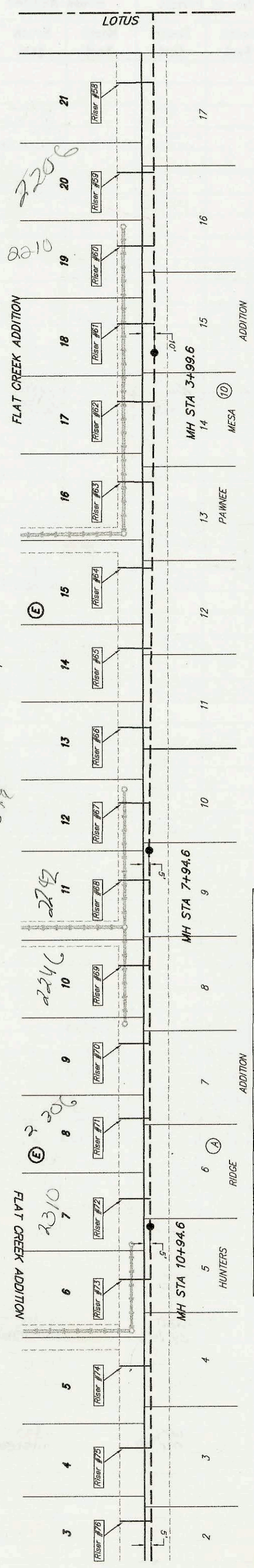


Refer to P-109 for riser sta
 Mustard

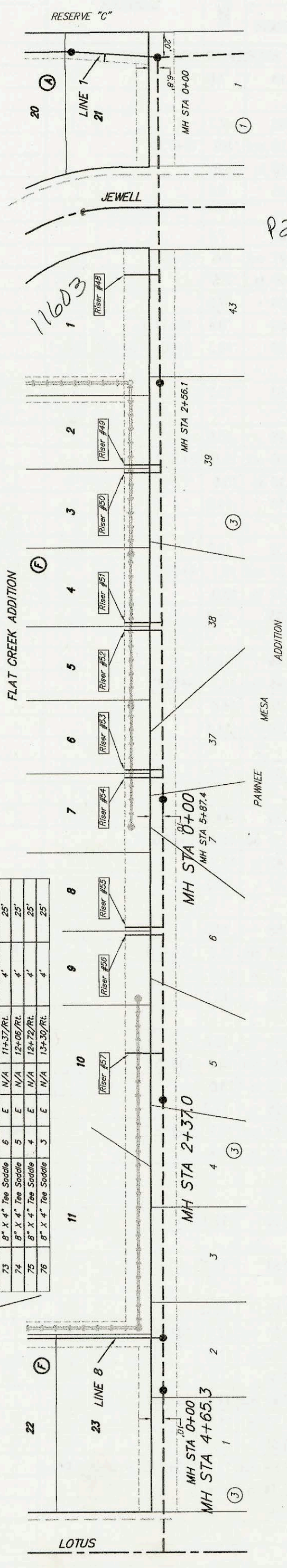


| NUMBER | TYPE | LOCATION | STATION/DIRECTION | FOR INFORMATION ONLY | |
|--------|--------------------|----------|-------------------|----------------------|------------------------|
| | | | | APPROXIMATE VERTICAL | APPROXIMATE HORIZONTAL |
| 58 | 8" X 4" Tee Saddle | E | 1+53/RL | 6" | 28' |
| 59 | 8" X 4" Tee Saddle | E | 2+54/RL | 7.5" | 30' |
| 60 | 8" X 4" Tee Saddle | E | 3+13/RL | 7" | 30' |
| 61 | 8" X 4" Tee Saddle | E | 3+75/RL | 7" | 29' |
| 62 | 8" X 4" Tee Saddle | E | 4+32/RL | 6.5" | 28' |
| 63 | 8" X 4" Tee Saddle | E | 5+02/RL | 6" | 28' |
| 64 | 8" X 4" Tee Saddle | E | 5+70/RL | 5.5" | 27' |
| 65 | 8" X 4" Tee Saddle | E | 6+34/RL | 6" | 26' |
| 66 | 8" X 4" Tee Saddle | E | 6+97/RL | 6" | 25' |
| 67 | 8" X 4" Tee Saddle | E | 7+58/RL | 5.5" | 25' |
| 68 | 8" X 4" Tee Saddle | E | 8+19/RL | 5.5" | 25' |
| 69 | 8" X 4" Tee Saddle | E | 8+87/RL | 5" | 25' |
| 70 | 8" X 4" Tee Saddle | E | 9+49/RL | 5" | 25' |
| 71 | 8" X 4" Tee Saddle | E | 10+09/RL | 4.5" | 25' |
| 72 | 8" X 4" Tee Saddle | E | 10+73/RL | 4.5" | 25' |
| 73 | 8" X 4" Tee Saddle | E | 11+37/RL | 4" | 25' |
| 74 | 8" X 4" Tee Saddle | E | 12+08/RL | 4" | 25' |
| 75 | 8" X 4" Tee Saddle | E | 12+72/RL | 4" | 25' |
| 76 | 8" X 4" Tee Saddle | E | 13+30/RL | 4" | 25' |

| NUMBER | TYPE | LOT NO. | BLOCK NO. | LINE NO. | STATION/DIRECTION | FOR INFORMATION ONLY | |
|--------|--------------------|---------|-----------|----------|-------------------|----------------------|------------------------|
| | | | | | | APPROXIMATE VERTICAL | APPROXIMATE HORIZONTAL |
| 48 | 8" X 4" Tee Saddle | 1 | F | N/A | 1+71.0/RL | 13" | 26' |
| 49 | 8" X 4" Tee Saddle | 2 | F | N/A | 3+20.7/RL | 12.5" | 28' |
| 50 | 8" X 4" Tee Saddle | 3 | F | N/A | 3+26.7/RL | 12.5" | 29' |
| 51 | 8" X 4" Tee Saddle | 4 | F | N/A | 4+44.7/RL | 12" | 29' |
| 52 | 8" X 4" Tee Saddle | 5 | F | N/A | 4+50.7/RL | 12" | 29' |
| 53 | 8" X 4" Tee Saddle | 6 | F | N/A | 4+60.7/RL | 11.5" | 29' |
| 54 | 8" X 4" Tee Saddle | 7 | F | N/A | 5+66.7/RL | 11" | 30' |
| 55 | 8" X 4" Tee Saddle | 8 | F | N/A | 1+00/RL | 11.5" | 30' |
| 56 | 8" X 4" Tee Saddle | 9 | F | N/A | 1+08/RL | 11" | 30' |
| 57 | 8" X 4" Tee Saddle | 10 | F | N/A | 1+92.4/RL | 11" | 30' |

NOTE: Vertical Riser Pipe shall be extended to 2' minimum above ground water elevation and 4' maximum below proposed ground elevation.

SCALE 1" = 80'



See N93

See N242

P208

| CONSTRUCTION RECORD | | | | | SERVICE RECORD | | | | | | | |
|---------------------|-----------------------|------------|-------|-----------------------|---------------------|------------------|---------------|------------|----------------|--------------|-----------------|------------|
| STATION | ELEVATION | | DEPTH | MANHOLE | 4-INCH "Y" BRANCHES | | No. of Permit | | House Number | | DATE OF PERMITS | |
| | GROUND | GRADE | | | North West | South East | North West | South East | North West | South East | North West | South East |
| LATERAL 468 | SOUTHWEST INTERCEPTOR | | | SEWER | | | | | | | | |
| 0+00 L-1 | 145.20 | 127.26 out | 17.9 | 0+00 EXIST | | | | | | | | |
| | 145.20 | 127.87 in | 17.3 | | 0+42.5 4" S 12V5H | | 2002-00986 | | 11602 W Jewell | | | 4-8-02 |
| | 144.30 | 128.35 out | 16.0 | 0+68.8 | | | | | | | | |
| | 144.30 | 128.45 in | 15.9 | | | | | | | | | |
| 1+00 | 143.20 | 128.49 | 14.7 | | 1+07.8 4" S 12V5H | | 2002-02637 | | 11606 W Jewell | | | 9-25-02 |
| | | | | | 1+67.8 4" S 10V5H | | 2002-02628 | | 11600 W Jewell | | | 9-25-02 |
| 2+00 | 143.50 | 128.64 | 14.9 | | 2+27.8 4" S 11V5H | | 2002-01807 | | 11614 W Jewell | | | 6-28-02 |
| | | | | | 2+77.8 4" S 11V8H | | 2002-01903 | | 11618 Jewell | | | 7-11-02 |
| 3+00 | 143.10 | 128.78 | 14.3 | | | | | | | | | |
| | 144.00 | 128.80 out | 15.2 | 3+14.8 = 0+00 LINE 2 | | | | | | | | |
| | 144.00 | 128.90 in | 15.1 | | | | | | | | | |
| 4+00 | 146.40 | 129.03 | 17.4 | | | | | | | | | |
| 5+00 | 148.20 | 129.17 | 19.0 | | 5+56 4" W 16V12H | 5+66 4" E 15V13H | 2002-00805 | 2002-03337 | 11617 Jewell | 11613 Jewell | 10-14-02 | 11-19-02 |
| 6+00 | 145.80 | 129.32 | 16.5 | | | | | | | | | |
| | 145.91 | 129.33 out | 16.6 | 6+05.0 | | | | | | | | |
| | 145.91 | 129.43 in | 16.5 | | | | | | | | | |
| | 145.97 | 129.59 out | 16.4 | 6+46.1 = 0+00 LINE 3 | | | | | | | | |
| | 145.97 | 129.69 in | 16.3 | | | | | | | | | |
| 7+00 | 144.80 | 129.91 | 14.9 | | 6+98 4" N 11V13H | | 2002-02804 | | 11753 Jewell | | | 10-14-02 |
| | | | | | 7+58 4" N 11V13H | | 2002-02803 | | 11707 Jewell | | | 10-14-02 |
| 8+00 | 144.50 | 130.32 | 14.2 | | 8+18 4" N 11V13H | | 2002-02862 | | 11771 Jewell | | | 10-14-02 |
| | | | | | 8+78 4" N 10V13H | | 2002-02322 | | 11745 W Jewell | | | 8-23-02 |
| 9+00 | 144.50 | 130.73 | 13.8 | | | | | | | | | |
| | | | | | 9+38 4" N 10V13H | | 2002-01417 | | 11719 W Jewell | | | 5-21-02 |
| 10+00 | 144.80 | 131.15 | 13.7 | | 9+93 4" N 10V13H | | 2002-02143 | | 11803 W Jewell | | | 8-8-02 |
| | 145.50 | 131.20 out | 14.3 | 10+13.2 | 4" STUB W 10V7H | | 2002-01529 | | 11807 W Jewell | | | 5-30-02 |
| | 145.50 | 131.30 in | 14.2 | | | | | | | | | |
| 11+00 | 145.00 | 131.58 | 13.4 | | 10+95.3 4" W 10V7H | | 2002-01416 | | 11811 W Jewell | | | 5-22-02 |
| | 145.45 | 131.67 out | 13.8 | 11+29.7 | | | | | | | | |
| | 145.45 | 131.77 in | 13.7 | | | | | | | | | |
| 12+00 | 145.00 | 132.02 | 13.0 | | | | | | | | | |
| | 146.53 | 132.20 out | 14.3 | 12+51.8 | | | | | | | | |
| | 146.53 | 132.30 in | 14.2 | | | | | | | | | |
| 13+00 | 145.40 | 132.39 | 13.0 | | | | | | | | | |
| 14+00 | 146.50 | 132.65 | 13.9 | | | | | | | | | |
| | 147.03 | 132.70 out | 14.3 | 14+01.8 = 0+00 LINE 5 | | | | | | | | |
| | 147.03 | 132.80 in | 14.2 | | | | | | | | | |
| 15+00 | 146.40 | 133.12 | 13.3 | | | | | | | | | |
| 16+00 | 146.00 | 133.45 | 12.6 | | | | | | | | | |
| | 146.35 | 133.47 out | 12.9 | 16+06.7 = 0+00 LINE 6 | | | | | | | | |
| | 146.35 | 133.62 in | 12.7 | | 16+57.2 4" S 9V13H | | 2002-00991 | | 11907 Jewell | | | 4-9-02 |
| 17+00 | 146.40 | 133.76 | 12.6 | | | | | | | | | |
| | | | | | 17+24.2 4" S 9V13H | | 2002-01089 | | 11911 Jewell | | | 4-16-02 |
| 18+00 | 147.00 | 133.92 | 13.1 | | 17+87.2 4" S 9V13H | | 2002-02142 | | 11915 Jewell | | | 8-8-02 |
| | | | | | 18+62.7 4" S 10V13H | | 2002-00314 | | 11919 W Jewell | | | 2-5-02 |
| 19+00 | 147.70 | 134.07 | 13.6 | | | | | | | | | |
| | 148.10 | 134.08 | 14.0 | 19+06.7 | 10" STUB W 134.18 | | | | | | | |
| 0+00 L-2 | 144.00 | 128.90 | 15.1 | 0+00 = 3+14.8 LINE 1 | | | | | | | | |
| | | | | | 0+33 4" S 11V5H | | 2002-01808 | | 11702 W Jewell | | | 6-28-02 |
| 1+00 | 143.20 | 129.83 | 13.4 | | 0+93 4" S 10V5H | | 2002-01810 | | 11706 W Jewell | | | 6-28-02 |
| | | | | | 1+53 4" S 9V5H | | 2002-00987 | | 11710 W Jewell | | | 4-8-02 |
| 2+00 | 143.30 | 130.77 | 12.5 | | 2+13 4" S 9V5H | | 2002-00397 | | 11714 Jewell | | | 2-14-02 |
| | | | | | 2+73 4" S 8V5H | | 2002-00311 | | 11718 W Jewell | | | 2-5-02 |
| 3+00 | 143.73 | 131.70 | 12.0 | 3+00.0 | | | 2002-00398 | | 11722 Jewell | | | 2-14-02 |
| | | | | | | | 2002-00399 | | 11802 Jewell | | | 2-14-02 |
| 4+00 | 143.20 | 132.41 | 10.8 | | | | 2002-00988 | | 11802 Jewell | | | 4-8-02 |
| 5+00 | 143.20 | 133.12 | 10.1 | | | | 2002-00989 | | 10810 Jewell | | | 4-8-02 |
| 6+00 | 143.30 | 133.83 | 9.5 | | | | 2002-00312 | | 11814 W Jewell | | | 2-5-02 |
| | 143.60 | 133.97 | 9.6 | 6+19.0 | | | | | | | | |
| 7+00 | 143.00 | 134.61 | 8.4 | | | | 2002-00990 | | 11818 W Jewell | | | 4-9-02 |
| 8+00 | 143.30 | 135.39 | 7.9 | | | | 2002-00400 | | 11822 Jewell | | | 2-14-02 |
| | 143.55 | 135.55 out | 8.0 | 8+20.4 | | | | | | | | |
| | 143.55 | 135.65 in | 7.9 | | | | 2002-02204 | | 11826 W Jewell | | | 8-14-02 |