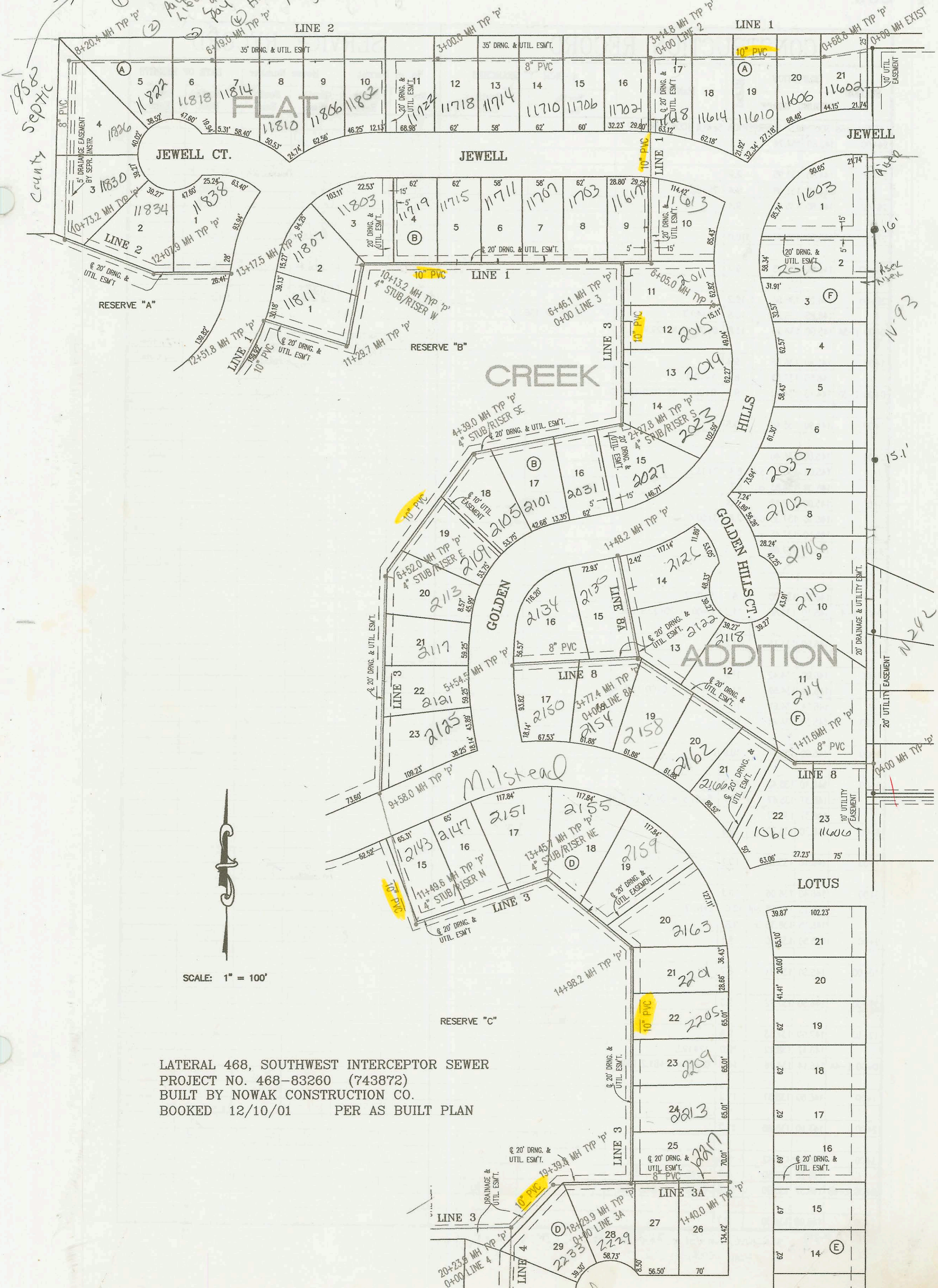


1958
119 M S/W
① Requ...
Annex...
City...
Any fees in...
kibu...
Pay...
④ Have...
12/2/05
B/M



SCALE: 1" = 100'

LATERAL 468, SOUTHWEST INTERCEPTOR SEWER
 PROJECT NO. 468-83260 (743872)
 BUILT BY NOWAK CONSTRUCTION CO.
 BOOKED 12/10/01 PER AS BUILT PLAN

CONSTRUCTION RECORD						SERVICE RECORD						
STATION	ELEVATION		DEPTH	MANHOLE	4-INCH "Y" BRANCHES		No. of Permit		House Number		DATE OF PERMITS	
	GROUND	GRADE			North West	South East	North West	South East	North West	South East	North West	South East
LATERAL 468	SOUTHWEST INTERCEPTOR			SEWER (CONT. FROM P-207)								
9+00	143.90	136.10	7.8									
10+00	144.40	136.68	7.7					2002-01530	11830 W Jewell Ct			5-30-02
	144.00	137.10	out 6.9	10+73.2								
	144.00	137.20	in 6.8									
11+00	144.00	137.35	6.6									
12+00	145.00	137.92	7.1									
	145.52	137.97	out 7.6	12+07.9				2002-02638	11834 W Jewell Ct			9-25-02
	145.52	138.07	in 7.5									
13+00	145.50	138.54	7.0					2002-02804	11838 Jewell			10-14-02
	147.05	138.63	8.4	13+17.5								
0+00 L-3	145.97	129.69	16.3	0+00 = 6+46.1 LINE 1								
					0+18 4" E 12V13H			2003-01094	2011 Golden Hills			4-22-03
1+00	145.00	129.83	15.2		0+80 4" E 12V13H			2003-01095	2011 Golden Hills			4-22-03
					1+42 4" E 12V13H			2003-01096	2011 Golden Hills			4-22-03
2+00	145.00	129.96	15.0		1+98 4" E 12V13H			2003-01097	2011 Golden Hills			
	145.63	130.00	out 15.6	2+27.8	4" S 12V10H			2003-01560	2007 Golden Hills			6-16-03
	145.63	130.10	in 15.5									
3+00	145.00	130.19	14.8		2+83 4" S 11V7H			2003-01561	2001 Golden Hills			6-16-03
					3+54 4" S 11V7H			2003-01557	2001 Golden Hills			6-16-03
4+00	145.00	130.32	14.7		4" S 11V7H			2003-01558	2105 Golden Hills			6-16-03
	145.46	130.37	out 15.1	4+39.0								
	145.46	130.47	in 15.0									
5+00	145.00	130.63	14.4		5+46 4" SE 11V7H			2003-01559	2109 Golden Hills			6-24-03
6+00	145.00	130.66	14.3		4" SE 11V10H			2003-02221	2113 Golden Hills			8/2/03
	145.40	130.68	out 14.7	6+52.0								
	145.40	130.78	in 14.6									
7+00	145.00	130.86	14.1		7+30 4" E 10V13H			2004-00902	2117 Golden Hills			4-5-04
8+00	145.00	131.03	14.0		8+01 4" E 10V13H			2004-00901	2101 Golden Hills			4-5-04
9+00	145.60	131.20	14.4		8+83 4" E 11V13H			2003-01151	2125 Golden Hills			4-30-03
	146.58	131.30	out 15.3	9+58.0								
	146.58	131.42	in 15.2									
10+00	145.70	131.47	14.2									
11+00	145.60	131.58	14.0		4" N 9V10H			2003-01893	2143 Milstead			7-22-03
	145.20	131.63	out 13.6	11+49.6								
	145.20	131.73	in 13.5									
12+00	145.00	131.82	13.2		12+45 4" N 9V13H			2004-00900	2147 Milstead			4-5-04
13+00	145.00	131.99	13.0		13+09 4" N 9V13H			2004-01699	2151 Milstead			6-15-04
	145.18	132.07	out 13.1	13+45.7	4" NE 9V10H			2004-00391	2155 Milstead			2-17-04
	145.18	132.16	in 13.0									
14+00	145.00	132.26	12.7		14+19 4" NE 9V13H			2004-01108	2159 Milstead			4-20-04
	145.10	132.43	out 12.7	14+98.2	14+81 4" NE 9V13H			2004-01682	2163 Milstead			6-10-04
	145.10	132.55	in 12.6									
15+00					15+13 4" E 9V13H			2003-00905	2201 Milstead			3-1-05
					15+94.2			2003-00458	2205 Milstead			3-1-05
16+00	145.00	132.70	12.3									
17+00	145.00	132.84	12.2									
18+00	145.00	132.99	12.0		18+29.9 = 0+00 LINE 3A			2004-01746	2229 Milstead			6-22-04
	145.00	133.03	out 12.0									
	145.00	133.20	in 11.8									
19+00	145.00	133.34	11.7		19+39.8							
	145.06	133.42	out 11.6									
	145.06	133.52	in 11.5									
20+00	145.00	133.61	11.4		20+23.9 = 0+00 LINE 4			2004-01698	2233 Milstead			6/15/04
	145.10	133.64	out 11.5									
	145.10	133.74	in 11.4									
21+00	143.40	133.94	9.5									
22+00					22+02.5 = 0+00 LINE 3B							
	144.13	134.22	out 9.9									
	144.13	134.32	in 9.8									
23+00	144.50	134.53	10.0					2002-02082	11827 Grant			8-4-03

CONT. ON P-209
 NIC SWR2004-03125 - 2213 milstead - (26' South of NPL)