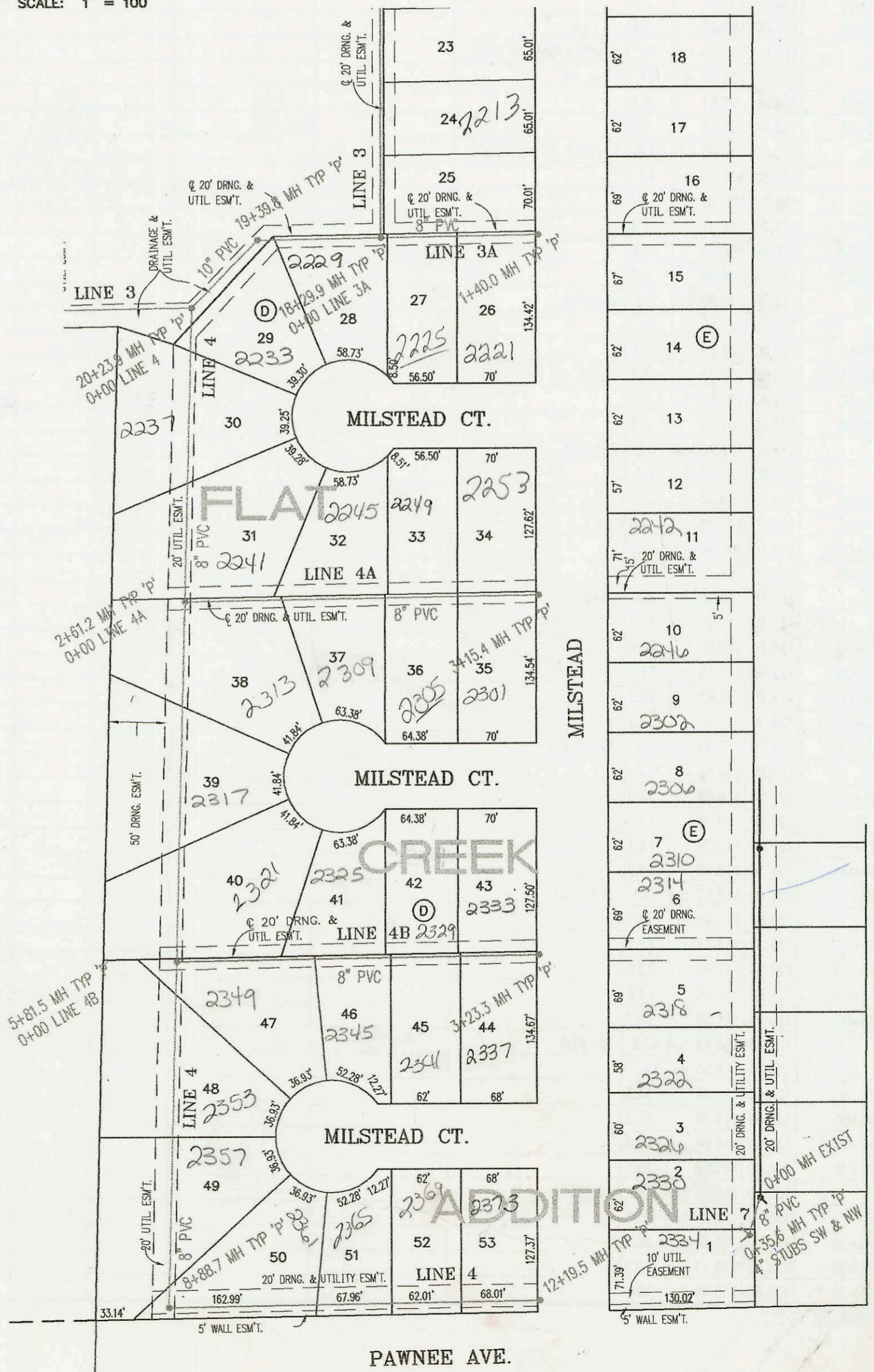


LATERAL 468, SOUTHWEST INTERCEPTOR SEWER  
PROJECT NO. 468-83260 (743872)  
BUILT BY NOWAK CONSTRUCTION CO.  
BOOKED 12/10/01 PER AS BUILT PLAN



SCALE: 1" = 100'



PARKRIDGE

CONSTRUCTION RECORD					SERVICE RECORD							
STATION	ELEVATION		DEPTH	MANHOLE	4-INCH "Y" BRANCHES		No. of Permit		House Number		DATE OF PERMITS	
	GROUND	GRADE			North West	South East	North West	South East	North West	South East	North West	South East
LATERAL 468	SOUTHWEST INTERCEPTOR			SEWER (CONT. FROM P-209)								
2+00	146.00	136.70	9.3		2+27.3 4" sch 40		2005-01816		2329 Milstead			7-21-05
					2+55.3 4" sch 40		2005-00034		2333 Milstead	2341.5 Milstead		3-24-05 12-5-05
3+00	145.50	137.10	8.4		2+80.3 4" sch 40 tap			2006-01132		2337.5 Milstead		5-8-06
	146.04	137.19	8.8	3+23.3								
0+00 L-5	147.03	132.80	14.2	0+00 = 14+01.8 LINE 1								
	145.62	137.14 out	8.5	0+97.5			2002-01805		21005 Milstead			6-28-02
	145.62	137.24 in	8.4									
1+00							2002-05530		2106 Milstead			2-26-02
2+00	145.00	137.70	7.3				2002-05531		2109 Milstead			2-26-02
3+00	145.00	138.15	6.8				2002-01806		2114.5 Milstead			6-28-02
	145.62	138.35	7.3	3+43.5			2002-02324		2118.5 Milstead			8-23-02
4+00	145.00	138.58	6.4									
							2002-09110		2122 Milstead			11-9-02
5+00	145.00	138.99	6.0									
							2002-03141		2126 Milstead			11-9-02
6+00	145.80	139.40	6.4									
	146.86	139.64	7.2	6+58.9								
0+00 L-6	146.35	133.57	12.8	0+00 = 16+06.7 LINE 1								
1+00	144.00	133.90	10.1									
							2002-00691			11905 Fossil		3-13-02
							2002-00813			2101.5 Milstead		2-5-02
2+00	144.20	134.24	10.0				2002-00980			2105.5 Milstead		4-8-02
	144.75	134.55	10.2	2+93.9			2002-00982			2109.5 Milstead		4-8-02
3+00	144.40	134.57	9.8				2002-00983			2113.5 Milstead		4-8-02
							2002-01414			2117.5 Milstead		5-21-02
4+00	144.40	134.84	9.6				2002-02141			2121.5 Milstead		8-7-02
5+00	144.20	135.12	9.1									
							2002-01605			2125 Milstead		9-23-02
							2002-01902			2129 Milstead		7-11-02
6+00	144.00	135.40	8.6				2002-02104			2133 Milstead		9-23-02
	143.95	135.53 out	8.4	6+48.4 = 0+00 LINE 6A								
	143.95	135.63 in	8.3				2004-00168	2003-01153	11918 W Grant	1180 Grant		1-20-04 4-30-03
7+00	144.60	135.67	8.9									
	145.22	135.70 out	9.5	7+37.8 = 0+00 LINE 6B				2003-01790		11814 Grant		7-9-03
	145.22	135.88 in	9.3				2003-03012		11914 Grant			11-17-03
8+00	146.00	136.11	9.9									
							2004-00905		11910 Grant			4-5-04
9+00	146.80	136.47	10.3									
							2003-02007	2003-02590	11906 Grant	11818 Grant		7-22-03
10+00	147.90	136.83	11.1									
	148.30	136.93	11.4	10+26.8			2003-03011	2004-00174	11902 Grant	11826 Grant		11-17-03 1-20-04
0+00 L-6A	143.95	135.63	8.3	0+00 = 6+48.4 LINE 6								
1+00	144.90	135.91	9.0									
2+00							2004-00169		11922 Grant			1-20-04
	144.53	136.20	8.3	2+03.3			2004-00171		11926 Grant			1-20-04
0+00 L-6B	145.22	135.88	9.3	0+00 = 7+37.8 LINE 6								
1+00	147.90	136.33	11.6									
2+00	146.60	136.77	9.8									
	146.65	136.88 out	9.8	2+24.6	4" STUB NW 137.62		2004-00392		11930 Grant			2-17-04
	146.65	136.98 in	9.7				2004-00173		11934 Grant			1-20-04
3+00	147.30	137.25	10.0				2003-00201		11938 Grant			1-21-04
	148.10	137.52	10.6	3+73.7	4" STUB SW 138.32			2003-01658		11942 Grant		6-24-03
0+00 L-7	147.60	139.88	7.7	0+00 EXIST								
	147.80	140.15	7.7	0+35.6	4" STUB NW 140.15 4" STUB SW 140.15		2003-01528		2830 Milstead			6-24-05
0+00 L-8	147.04	132.28	14.8	0+00								
					0+50 4" N 9V13H	0+53.6						4-20-05
1+00	146.00	134.56	11.4			1+04.6	2005-00922		11006 Lotus			4-20-05
	146.37	134.82 out	11.6	1+11.6			2005-00921		11010 Lotus			
	146.37	134.92 in	11.5			1161.6 4" sch 40	2004-05350		2100 Milstead			1-24-05
2+00	146.00	135.25	10.8				2003-02380		2118 Golden Hill			9-11-03
							2004-05019		2107 Milstead			6-20-04
3+00	146.80	135.61	11.2									
	146.40	135.90 out	10.5	3+77.4 = 0+00 L-8A								
	146.40	136.00 in	10.4									

CONT. ON P-206

N/C SWR2004-03127-2309 S Milstead - (51' West of East Prop Line)  
 N/C SWR2005-02163-2345 S Milstead - (7.5' West of EPL) 9-1-05