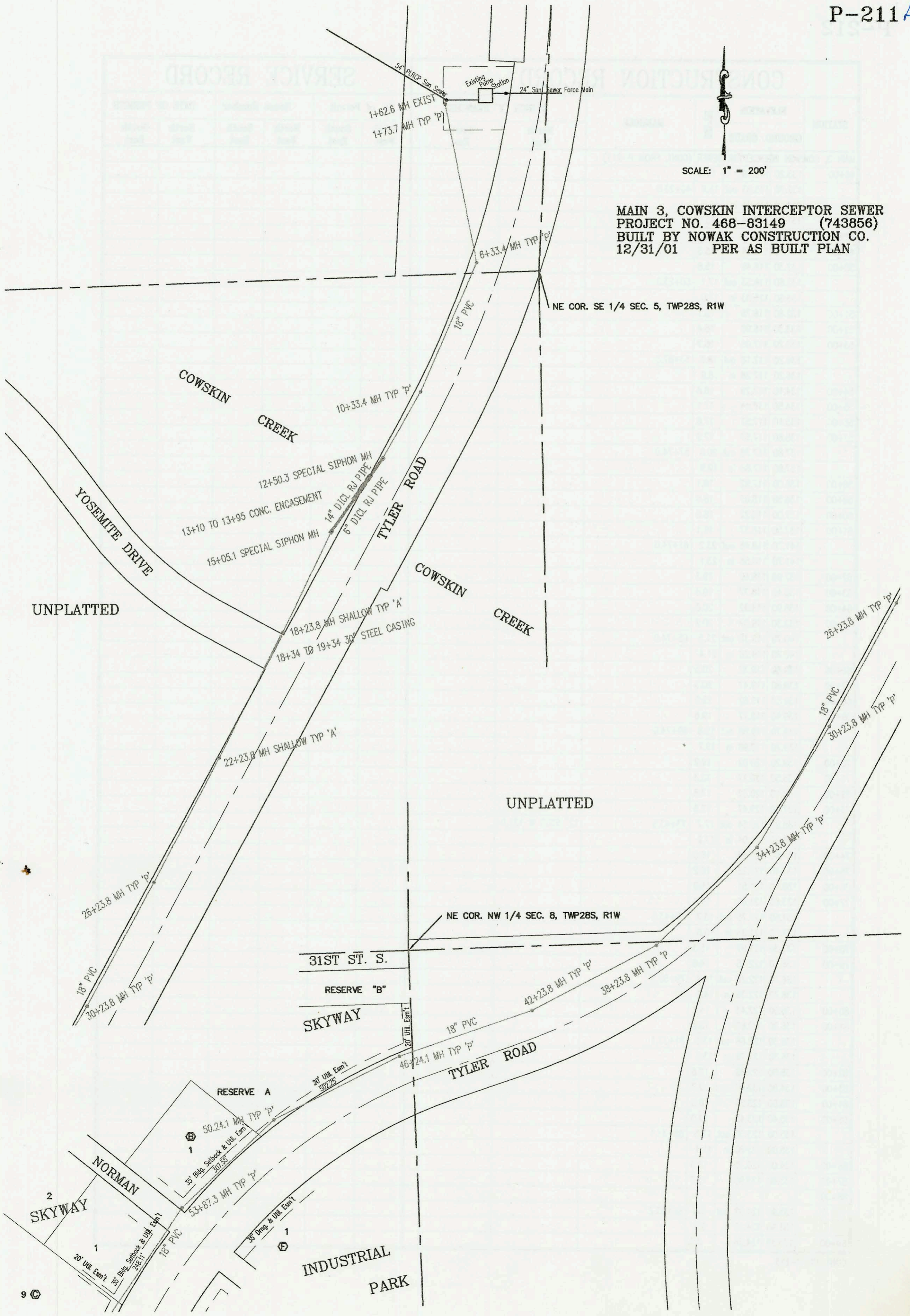




SCALE: 1" = 200'

MAIN 3, COWSKIN INTERCEPTOR SEWER
PROJECT NO. 468-83149 (743856)
BUILT BY NOWAK CONSTRUCTION CO.
12/31/01 PER AS BUILT PLAN



UNPLATTED

UNPLATTED

31ST ST. S.

RESERVE "B"

SKYWAY

RESERVE A

NORMAN SKYWAY

INDUSTRIAL PARK

CONSTRUCTION RECORD						SERVICE RECORD						
STATION	ELEVATION		DEPTH	MANHOLE	4-INCH "Y" BRANCHES		No. of Permit		House Number		DATE OF PERMITS	
	GROUND	GRADE			North West	South East	North West	South East	North West	South East	North West	South East
MAIN 3, COWSKIN INTERCEPTOR SEWER												
	114.10	97.77 out	16.3	1+62.6 EXIST								
	114.10	100.77 in	13.3									
	114.10	101.26 out		1+73.7								
	114.10	101.36 in										
2+00	114.00	101.41	12.6									
3+00	114.30	101.61	12.7									
4+00	114.40	101.81	12.6									
5+00	113.10	102.01	11.1									
6+00	114.00	102.11	11.9									
	114.90	102.28 out	12.6	6+33.4								
	114.90	102.38 in	12.5									
7+00	112.60	102.51	10.1									
8+00	113.00	102.71	10.3									
9+00	112.00	102.91	9.1									
10+00	110.50	103.11	7.4									
	111.00	103.18 out	7.8	10+33.4								
	111.00	103.28 in	7.7									
11+00	110.50	103.41	7.1									
12+00	111.00	103.60	7.4									
	110.90	103.70 out	7.2	12+50.3 SIPHON END								
	110.90	103.80 in	7.1	6" & 14"								
13+25	104.00	95.61	8.4									
13+80	103.00	95.83	7.2									
	110.60	106.00 out	4.6	15+05.1 SIPHON BEGIN								
	110.60	106.50 out	4.1									
	110.60	106.20 in	4.4									
16+00	111.90	106.41	5.5									
17+00	112.00	106.63	5.4									
18+00	112.10	106.85	5.3									
	112.70	106.90 out	5.8	18+23.8								
	112.70	107.00 in	5.7									
19+00	117.00	107.15	9.8									
20+00	113.00	107.35	5.7									
21+00	112.80	107.55	5.3									
22+00	113.00	107.75	5.3									
	113.60	107.80 out	5.8	22+23.8								
	113.60	107.90 in	5.7									
23+00	114.50	108.28	6.2									
24+00	115.10	108.78	6.3									
25+00	113.90	109.28	4.6									
26+00	117.70	109.78	7.9									
	119.30	109.90 out	9.4	26+23.8								
	119.30	110.00 in	9.3									
27+00	121.10	110.50	10.6									
28+00	122.40	111.16	11.2									
29+00	122.70	111.82	10.9									
30+00	124.00	112.47	11.5									
	124.70	112.63 out	12.1	30+23.8								
	124.70	112.73 in	12.0									
31+00	125.50	112.88	12.6									
32+00	127.00	113.18	13.8									
33+00	127.50	113.28	14.2									
34+00	126.70	113.48	13.2									
	126.60	113.53 out	13.1	34+23.8								
	126.60	113.63 in	13.0									
35+00	126.90	113.78	13.1									
36+00	127.50	113.98	13.5									
37+00	128.80	114.18	14.6									
38+00	128.10	114.38	13.7									
	128.20	114.43 out	13.8	38+23.8								
	128.20	114.53 in	13.7									
39+00	129.90	114.64	15.3									
40+00	130.00	114.79	15.2									
41+00	134.50	114.94	19.6									
42+00	134.80	115.09	19.7									
	135.10	115.13 out	20.0	42+23.8								
	135.10	115.23 in	19.9									
43+00	136.00	115.34	20.7									
44+00	135.60	115.49	20.1									
45+00	134.60	115.64	19.0									